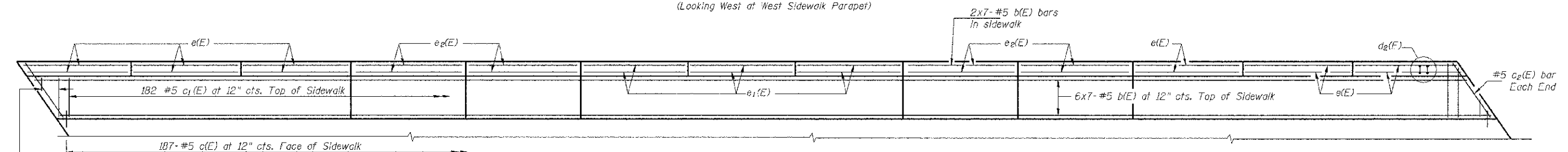


NORTH PARAPET & SIDEWALK ELEVATION
(Looking West at West Sidewalk Parapet)

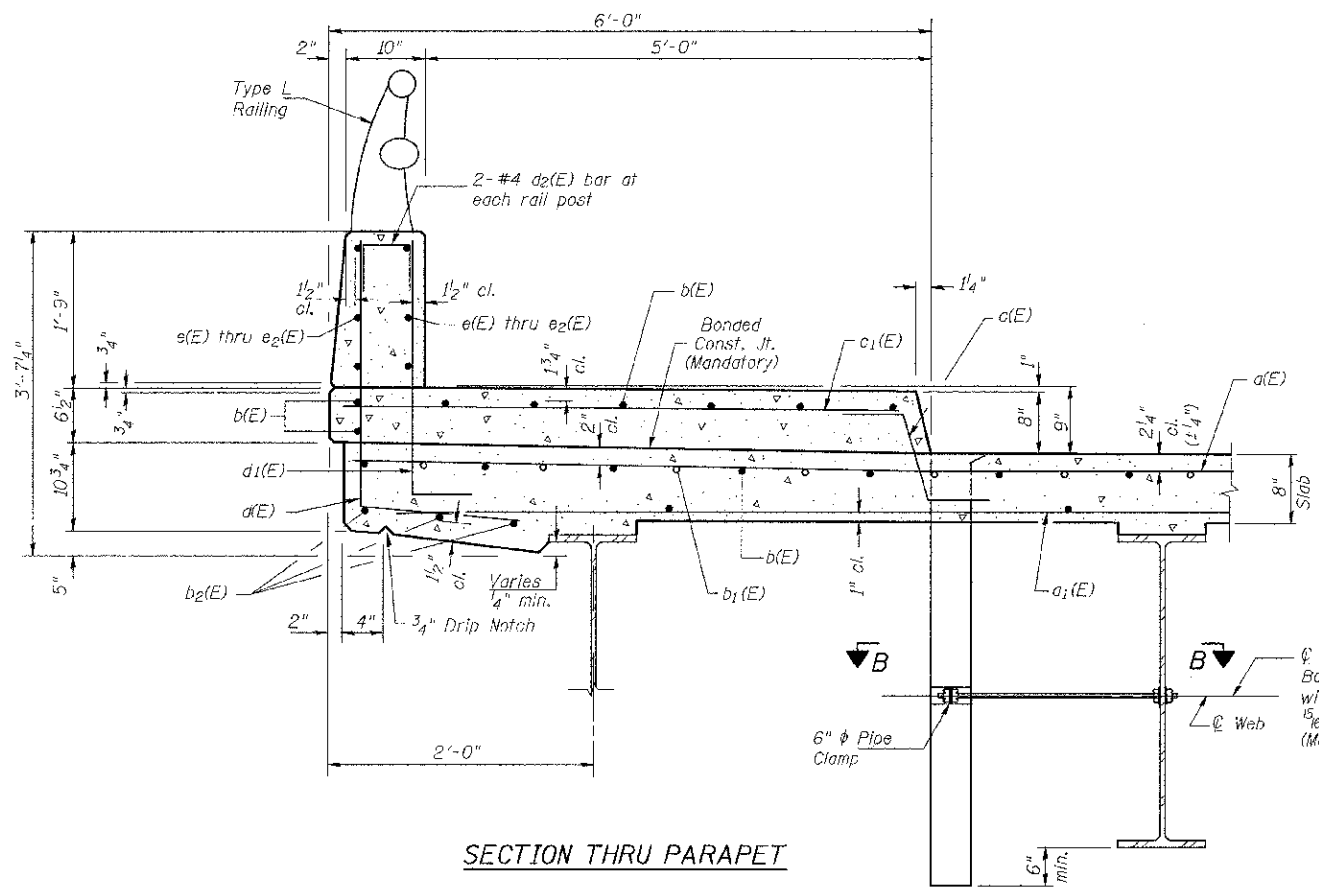


NORTH PARAPET & SIDEWALK PLAN

*5-#5 c1(E) bars at 12" o.c.s.

*Order c1(E) bars Full Length. Cut to fit skew and use remainder of bars in opposite end.

MIN. BAR LAP
#5 = 3'-3"



SECTION THRU PARAPET

Notes:
See Sheet 11 of 28 for bar details, floor drain details, parapet joint details and Bill of Material.
Bars indicated thus 20 x 3-#5 etc. indicates 20 lines of bars with 3 lengths per line.
See Sheet 13 of 28 for rail spacing on approach pavement.
See sheet 14 of 28 for rail details.

FILE NAME - V:\2556\GADD SHEETS\STRUCTURES - Road	USER NAME = amountal 02-27-2013\2556\009.dgn	DESIGNED BAN DRAWN TAC	REVISED - REVISED - REVISED - REVISED -	DEKALB COUNTY C.H. 26 (FIVE POINTS RD.) OVER SOUTH BRANCH OF KISHWAUKEE RIVER	SCALE: N/A	SHEET NO. 9 OF 28 SHEETS	STA. N/A	TO STA. N/A	RTE. NO. CH 26	SECTION 05-00044-01-0R	COUNTY DEKALB	TOTAL SHEETS 49	SHEET NO. 24
PLOT SCALE = NONE				SUPERSTRUCTURE DETAILS				CONTRACT NO. 87477		ILLINOIS FED. AID PROJECT BR5-1122(108)			
PLOT DATE = 3/26/2013													