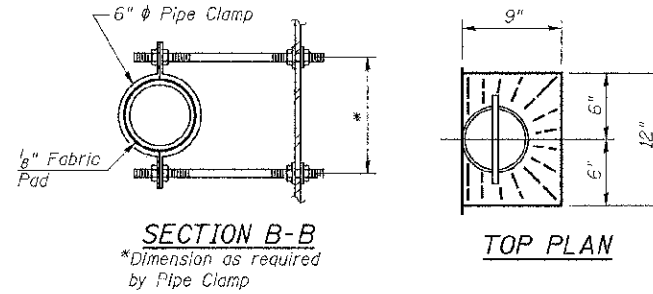
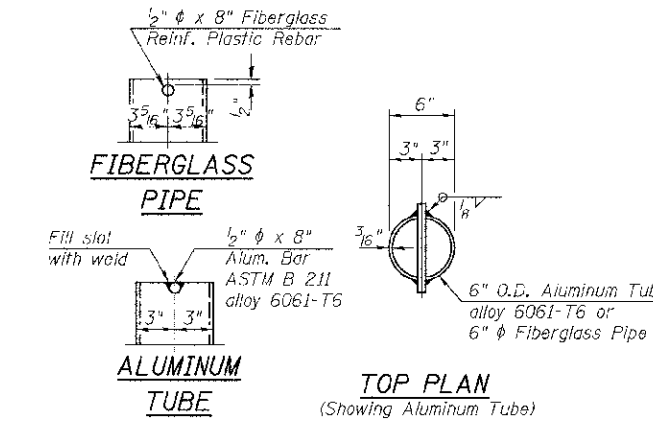


PARAPET JOINT DETAILS



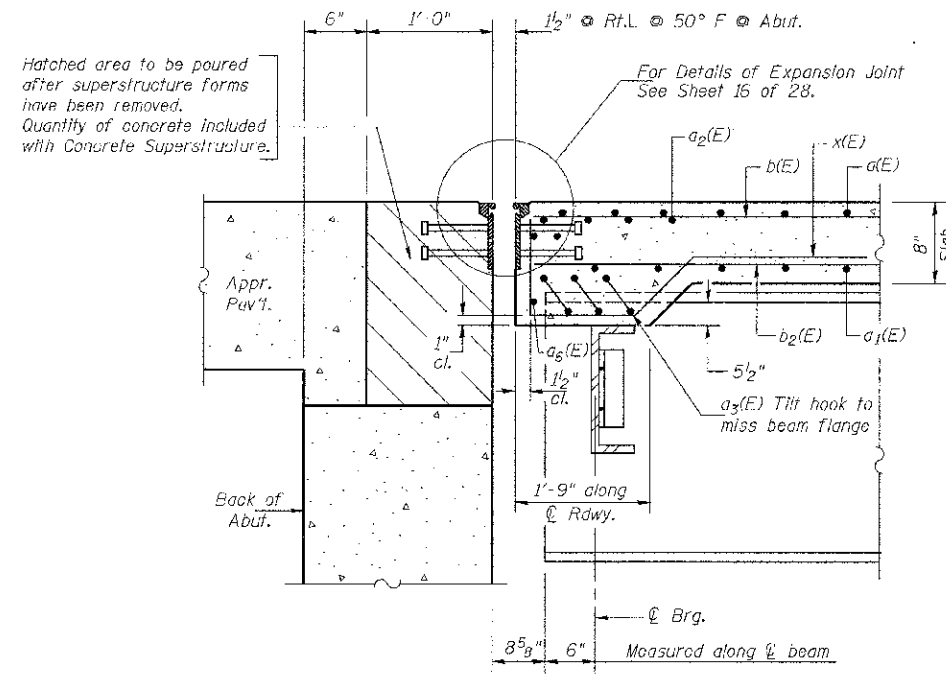
SECTION B-B
*Dimension as required by Pipe Clamp



FIBERGLASS PIPE

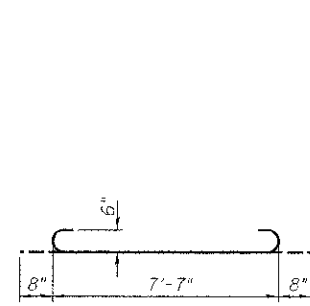
ALUMINUM TUBE

TOP PLAN (Showing Aluminum Tube)

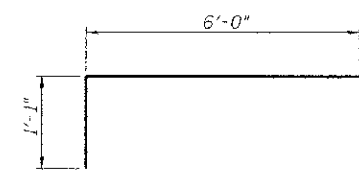


SECTION A-A

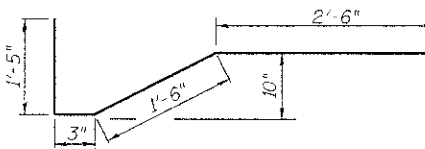
Notes:
Drains shall be located clear of all diaphragms.
The exterior surfaces of the floor drains shall be painted with the finish coat as specified in the special provisions for Cleaning and Painting New Metal Structures. The exterior surfaces of the drains shall be cleaned according to Steel Structures Painting Council's Spec. SSPC-SP1 prior to painting.
Fiberglass pipe shall conform to ASTM D 2996, with short-time rupture strength hoop tensile stress of 30,000 p.s.i. minimum.
Galvanize clamping device according to AASHTO M232. Cost of clamping device and inserts is included in Floor Drains.



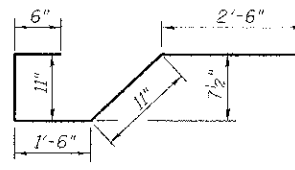
BAR a3(E)



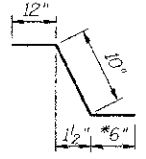
BAR a4(E)



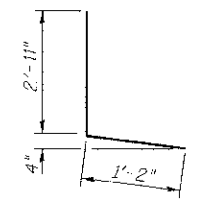
BAR a5(E)



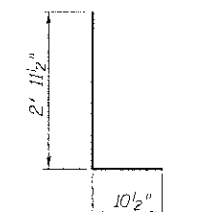
BAR x(E)



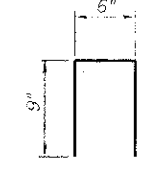
BAR c(F)



BAR d(E)



BAR d1(E)



BAR d2(E)

SUPERSTRUCTURE
BILL OF MATERIAL

Bar	No.	Size	Length	Shape
a(E)	343	#5	36'-1"	—
a1(E)	223	#5	35'-1"	—
a2(E)	16	#6	24'-0"	—
a3(E)	30	#6	8'-11"	—
a4(E)	343	#5	7'-1"	—
a5(E)	172	#5	5'-8"	—
a6(E)	4	#6	23'-4"	—
b(E)	322	#5	29'-5"	—
b1(E)	72	#6	35'-0"	—
b2(E)	296	#5	26'-2"	—
c(E)	187	#5	2'-4"	—
c1(E)	187	#5	5'-7"	—
c2(F)	2	#5	6'-9"	—
d(E)	187	#4	4'-1"	—
d1(E)	187	#6	3'-10"	—
d2(E)	14	#4	2'-0"	—
e(E)	36	#4	15'-2"	—
e1(E)	18	#4	18'-8"	—
e2(E)	24	#4	8'-10"	—
x(E)	60	#5	6'-4"	—
Reinforcement Bars, Epoxy Coated			POUND	51,810
Concrete Superstructure			CU YD	222.2

Bars indicated thus 1 x 5 - #5 etc. indicates 1 line of bars with 5 lengths per line.

* In lieu of bottom leg, c(E) bars may be cored and set according to Article 509.06 of the Standard Specifications. Cored holes shall be roughened or scored per manufacturer's recommendations. Maximum depth of cored hole shall not exceed 6".

FILE NAME = V:\2556\CA00 SHEETS\STRUCTURES	USER NAME = smounts1	DESIGNED BAN	REVISED -	DEKALB COUNTY C.H. 26 (FIVE POINTS RD.) OVER SOUTH BRANCH OF KISHWAUKEE RIVER	SUPERSTRUCTURE DETAILS	RTE. NO.	SECTION	COUNTY	TOTAL SHEETS	SHEET NO.	
	02 27 2013 12555601.dgn	DRAWN TAC	REVISED -			CH 26	05-00044-01-BR	DEKALB	49	26	
	PLOT SCALE = NONE	CHECKED CTM	REVISED -			SCALE: N/A	SHEET NO. 11 OF 28 SHEETS	STA. N/A	TO STA. N/A	CONTRACT NO. 87477	
	PLOT DATE = 3/26/2013	DATE -	REVISED -			ILLINOIS FED. AID PROJECT BR5-1122(08)					