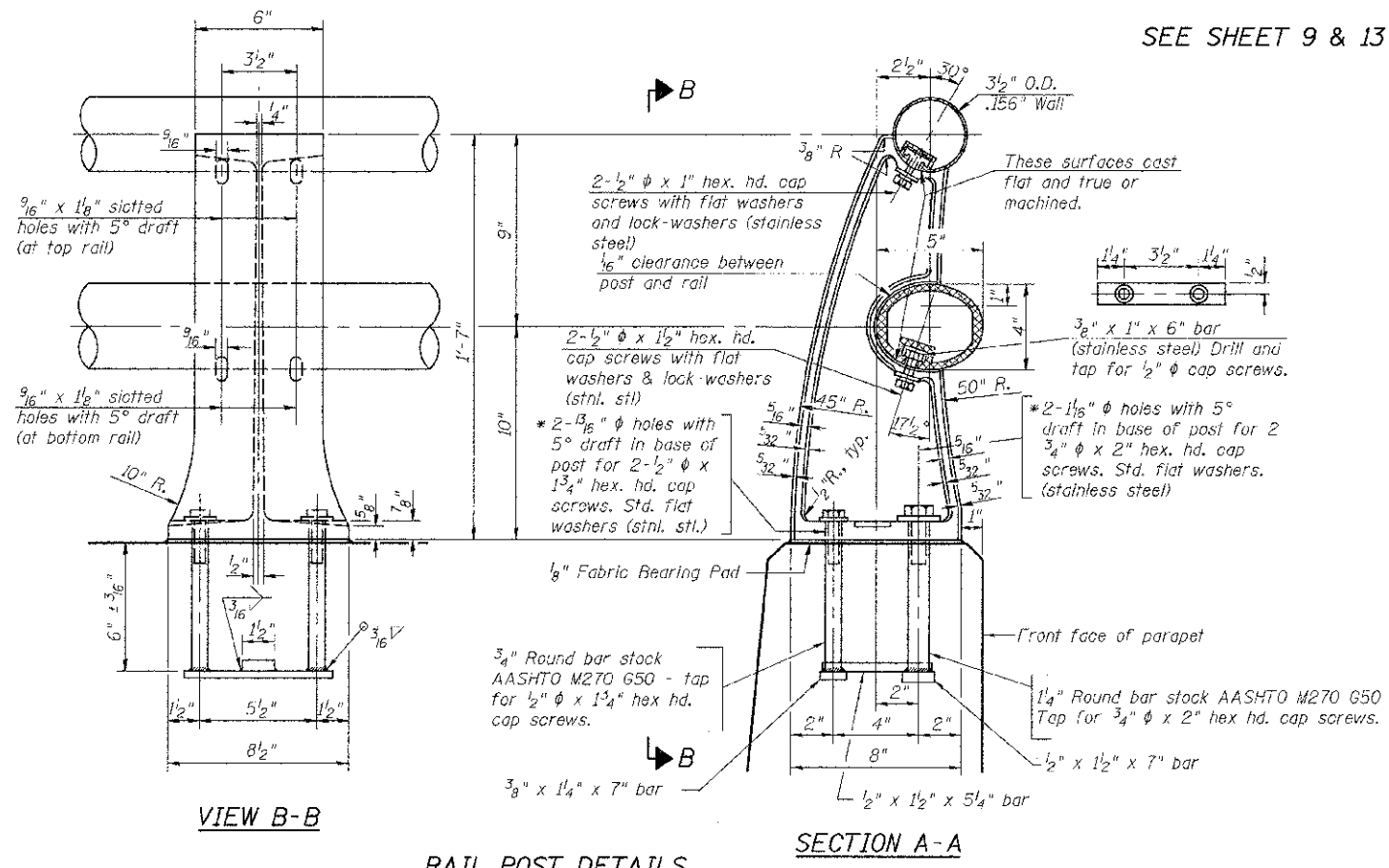


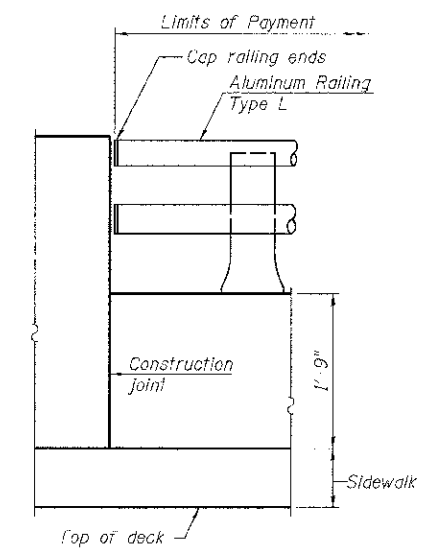
SEE SHEET 9 & 13 OF 28 FOR RAIL POST SPACING.



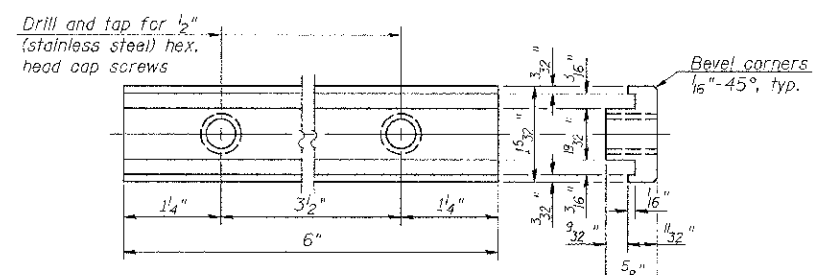
RAIL POST DETAILS

* In lieu of the cast-in-place anchor device shown, the Contractor has the option of drilling and setting stainless steel anchor rods of the same diameter and grade as the specified cap screws according to Article 509.06 of the Standard Specifications. Embedment shall be according to the manufacturer's specifications.

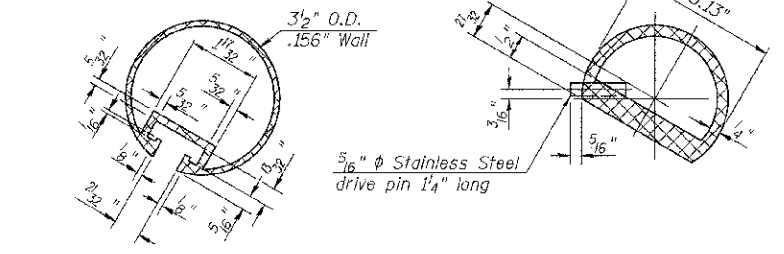
Notes:
 All Posts shall be normal to parapet.
 All joints in rail shall be spliced per detail.
 All exposed rail ends shall be capped per detail.
 Provide 1-1/8" and 2-1/8" Aluminum Shims for 25% of the Posts. Rail elements shall be parallel to Grade-high spots will be ground and low spots shimmed.



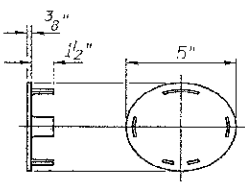
RAIL END TREATMENT FOR TYPE 5 AND 6 TERMINAL



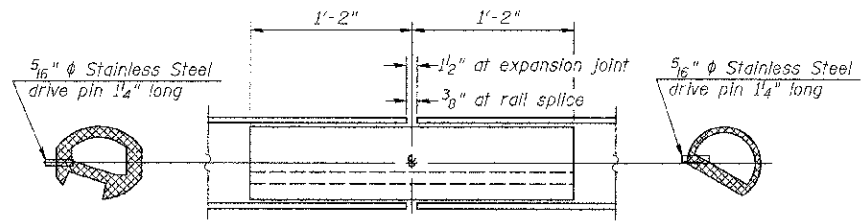
RAIL POST CLAMP BAR For Top Rail



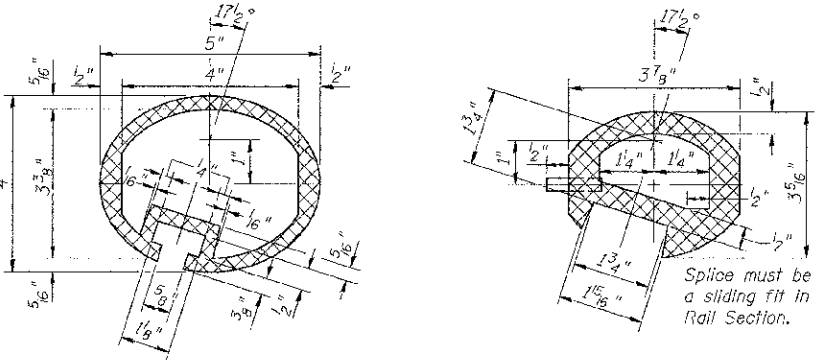
SECTION THRU TOP RAIL and SECTION THRU SPLICE For Top Rail



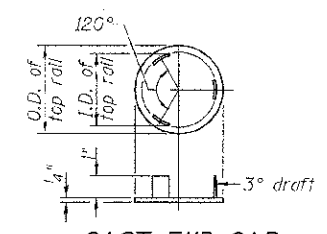
CAST END CAP For bottom rail DRIVE FIT TYPE



RAIL SPLICE



SEC. THRU ELLIPTICAL RAIL SECTION and SEC. THRU SPLICE



CAST END CAP For top rail

Notes:
 All Posts shall be normal to parapet.
 All joints in rail shall be spliced per detail.
 All exposed rail ends shall be capped per detail.
 Provide 1-1/8" and 2-1/8" Aluminum Shims for 25% of the Posts. Rail elements shall be parallel to Grade-high spots will be ground and low spots shimmed.

Note:
 The end rail post shall be set back as required for the terminal rail section.

BILL OF MATERIAL

Item	Unit	Quantity
Aluminum Railing, Type L	FOOT	211'

FILE NAME = V:\2855\CHCC SHEETS\STRUCTURES - Rev.d	USER NAME = girouxat	DESIGNED BAN	REVISED -	DEKALB COUNTY C.H. 26 (FIVE POINTS RD.) OVER SOUTH BRANCH OF KISHWAUKEE RIVER	ALUMINUM RAILING, TYPE L	RTE. NO.	SECTION	COUNTY	TOTAL SHEETS	SHEET NO.	
	02-27-2013\2955b814.dgn	DRAWN TAC	REVISED -			CH 26	05-00044-01-BR	DEKALB	49	29	
	PLCT SCALE = NONE	CHECKED CTM	REVISED -			CONTRACT NO. 87477					
	PLCT DATE = 3/26/2013	DATE -	REVISED -			SCALE: N/A	SHEET NO. 14 OF 28 SHEETS	STA. N/A	TO STA. N/A	ILLINOIS	FED. AID PROJECT BR5-11221089