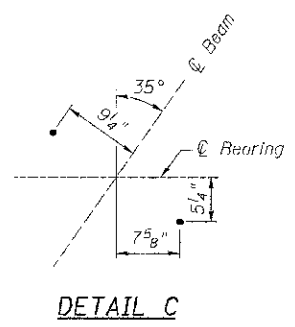


Note:
 See sheet 25 of 28 for Bar Details, Bill of Material, Sections A-A, B-B, C-C & Details "A" and "B".
 See sheet 27 of 28 for pile details.
 Hatched area to be poured after superstructure is in place.
 See sheet 19 of 28 for anchor bolt details.

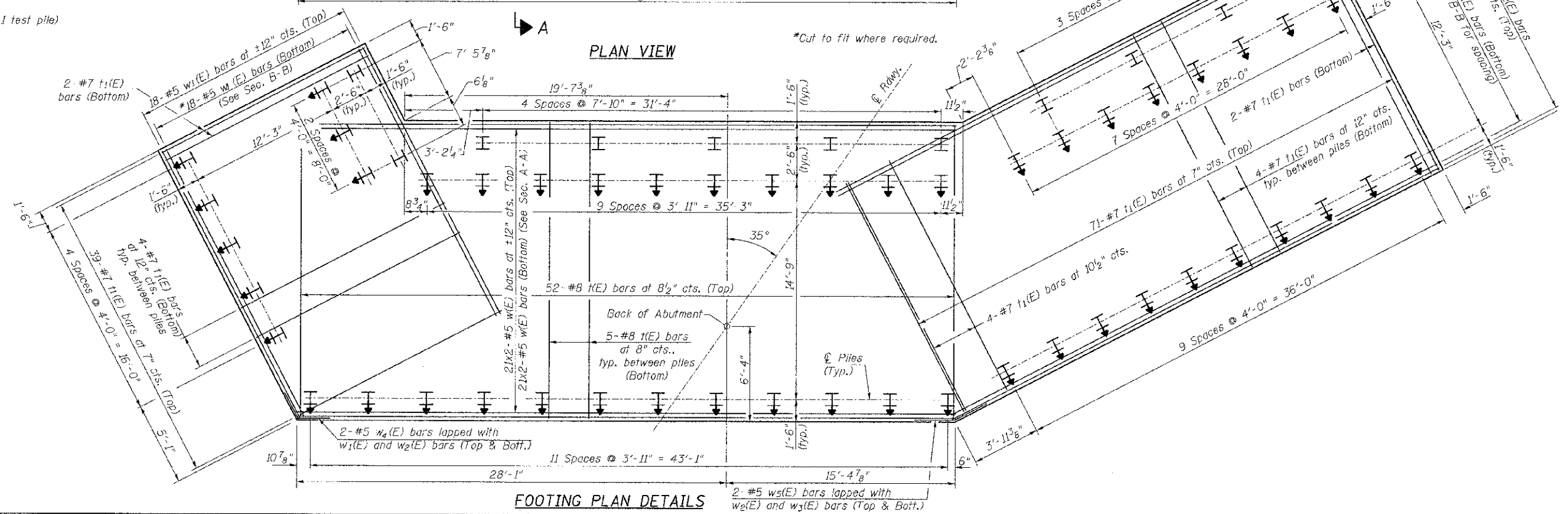


DETAIL C

MIN. BAR LAP
 #5 = 2'-6"

PILE DATA

Type & Size: Steel HP10x42 w/ pile shoes
 Nominal Required Bearing: 335 kips
 Factored Resistance Available: 184 kips
 Est. Length: 35'
 No. Req'd: 59 (Includes 1 test pile)



PLAN VIEW

FOOTING PLAN DETAILS

FILE NAME =	USER NAME = amuntel	DESIGNED BAN	REVISED -	DEKALB COUNTY C.H. 26 (FIVE POINTS RD.) OVER SOUTH BRANCH OF KISHWAUKEE RIVER	NORTH ABUTMENT & FOOTING PLAN		RTE. NO.	SECTION	COUNTY	TOTAL SHEETS	SHEET NO.		
V:\2005\B\1401 SHEETS\STRUCTURES - Road	02-27-2013\2005\024.dgn	DRAWN TAC	REVISED -		SCALE: N/A	SHEET NO. 24 OF 28 SHEETS	STA. N/A	TO STA. N/A	CH 26	05-00044-01-BR	DE KALB	49	39
	PLOT SCALE = NONE	CHECKED CTM	REVISED -									CONTRACT NO. 87477	
	PLOT DATE = 3/26/2013	DATE -	REVISED -									ILLINOIS FED. AID PROJECT BR5-11221001	