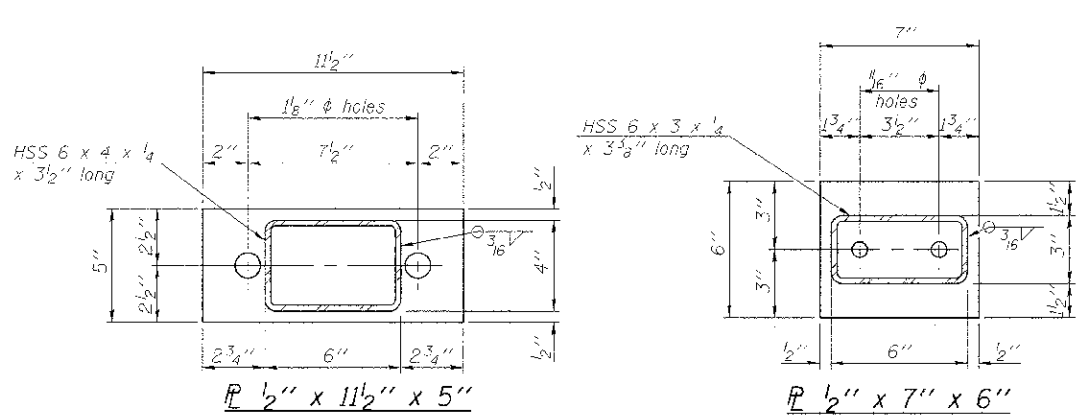
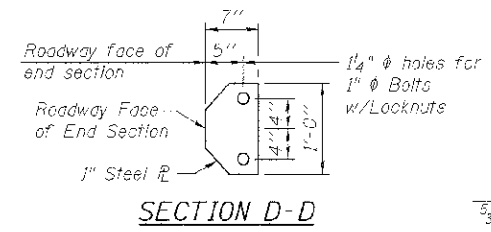


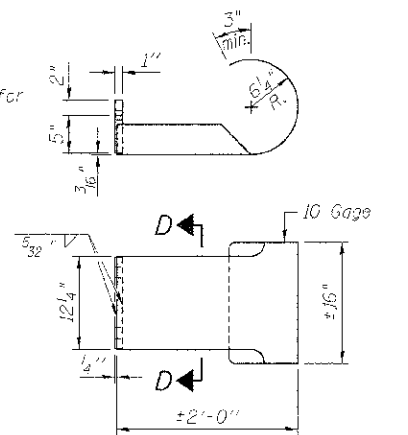
VIEW A-A  
ROUND HEAD BOLT



ELEVATION VIEW



SECTION D-D

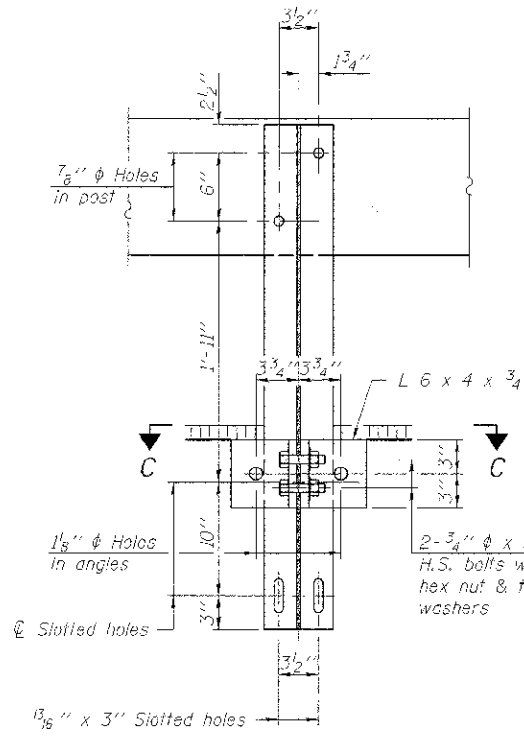


CURLLED END SECTION DETAILS

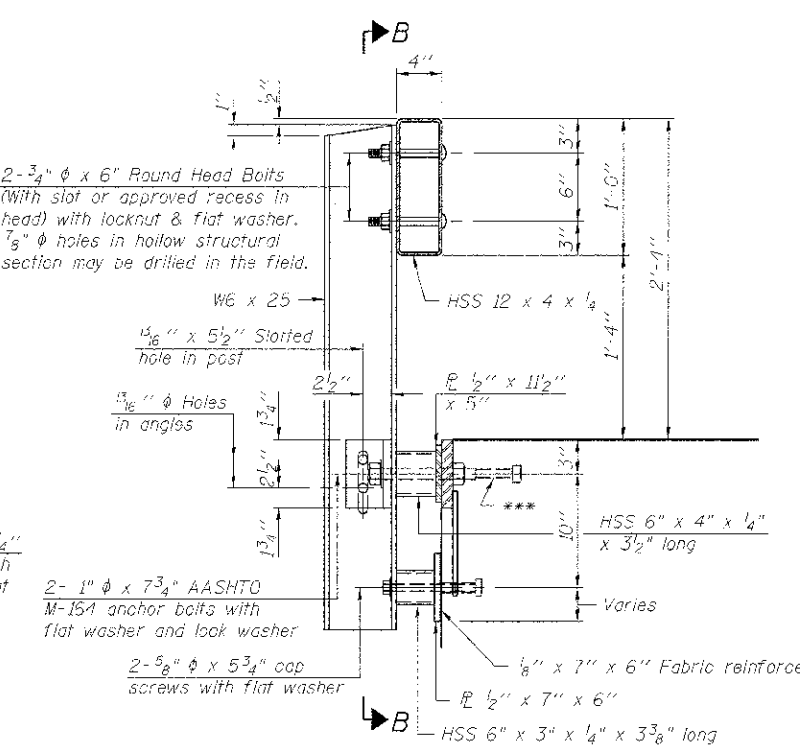
**NOTES:**  
 \*\*\*\*(4 required)  
 All field drilled holes shall be coated with an approved zinc rich paint before erection.  
 For multi-span bridges, sufficient 1/4\"/>

All steel rail elements shall be galvanized according to Article 509.05 of the Standard Specifications.  
 \*\*\* The studs of the anchor devices shall be placed below the top reinforcement bars and the outermost longitudinal reinforcement bar shall be placed directly above the studs of the rail post anchor device.

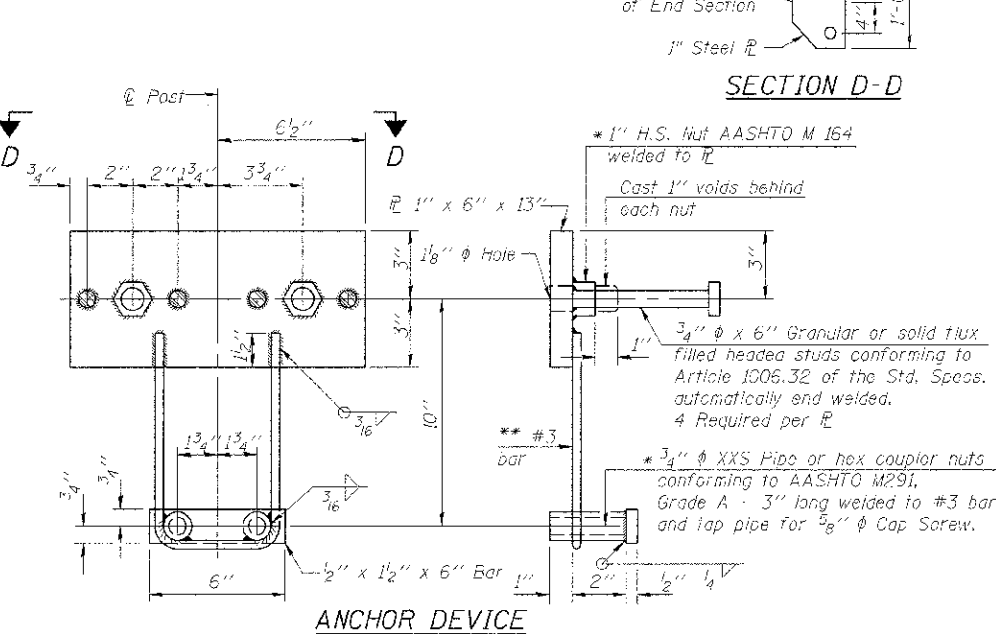
\*\*\*\* Cost of Curled End Sections to be included with Steel Railing, Type S1.



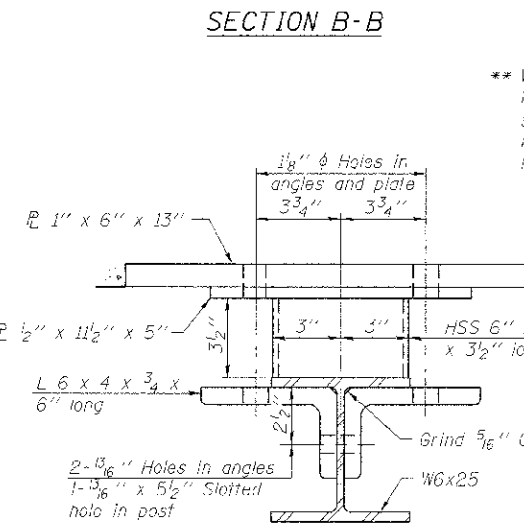
SECTION B-B



SECTION AT RAILING POST

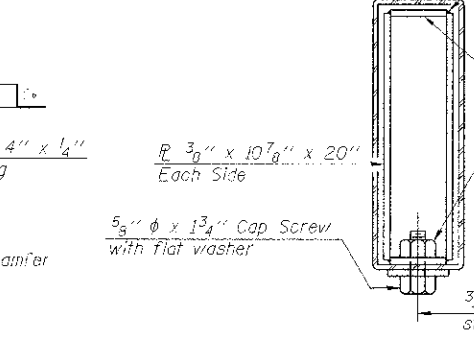


ANCHOR DEVICE

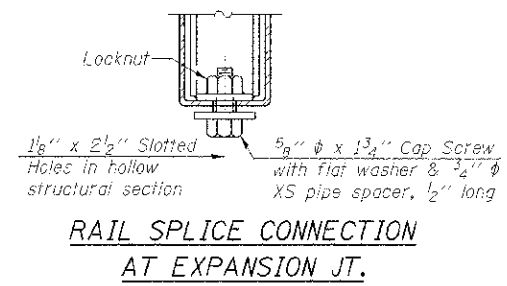


SECTION C-C

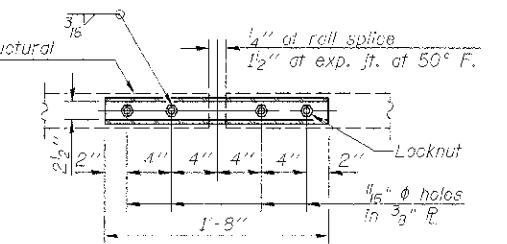
\*\* Whenever the lower insert assemblies interfere with strand locations, the #3 bars shall be cut and adjusted in order to allow raising or lowering of the lower inserts. Maximum adjustment not to exceed 1/2\"/>



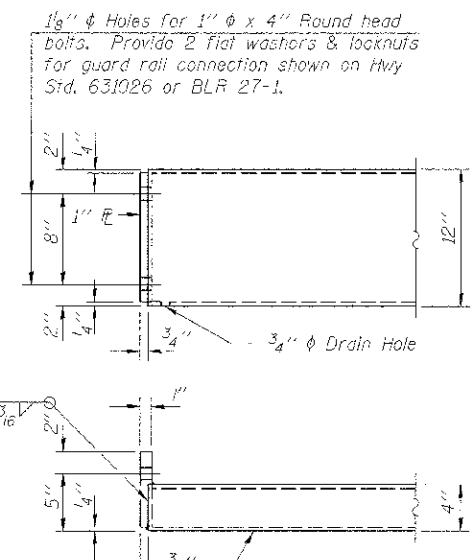
SECTIONS AT RAIL SPLICE



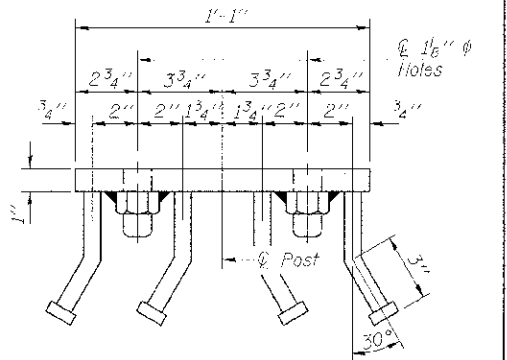
RAIL SPLICE CONNECTION AT EXPANSION JT.



PLAN-BOTT. SPLICE R TYPICAL



END OF RAIL DETAILS



VIEW D-D

BILL OF MATERIAL

Item	Unit	Quantity
Steel Railing, Type S1	Foat	178



DESIGNED -	IPN	REVISED -	
CHECKED -	BKC	REVISED -	
DRAWN -	IPN	REVISED -	
CHECKED -	BKC	REVISED -	

BUREAU COUNTY  
 T.R. 398 OVER SPRING CREEK  
 STATION 20+00

STEEL RAILING, TYPE S1 DETAILS  
 STRUCTURE NO. 006-4143

STRUCTURAL SHEET NO. 8 OF 9

TWP. RTE.	SECTION	COUNTY	TOTAL SHEETS	SHEET NO.
399	09-10113-00-BR	BUREAU	19	14
WHA# 1004D12		CONTRACT NO.	87551	
ILLINOIS FED. AID PROJECT BRCS-03110341				

FILE: S:\PROJECTS\2021\08\02\Bureau\T.R.398\DESIGN\STRUCT\Drawings\18R4012.S-1.Rail.dwg