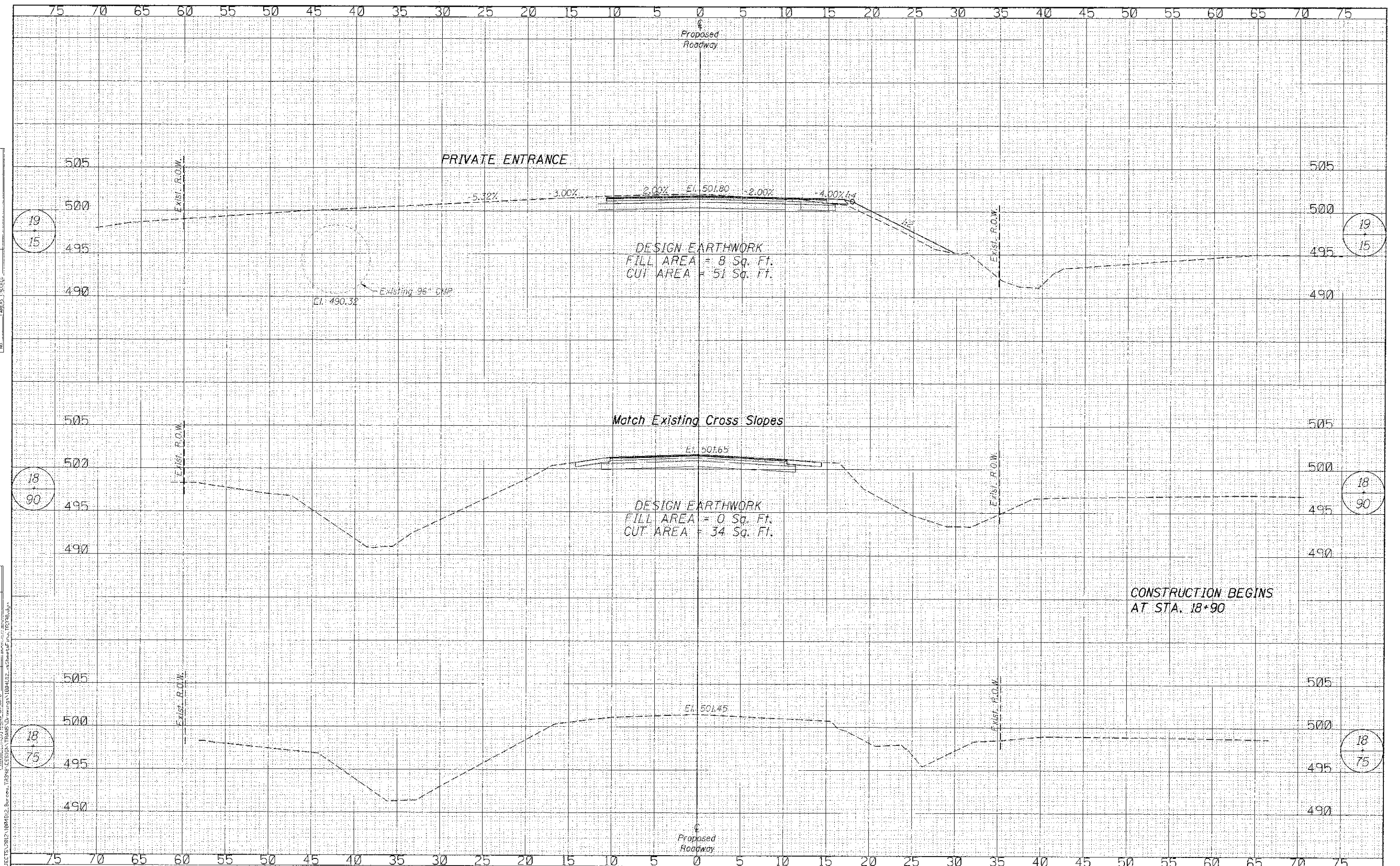


DATE	
BY	
PROJECT NO.	
SHEET NO.	
TITLE	
DATE	
BY	
PROJECT NO.	
SHEET NO.	
TITLE	

DATE	
BY	
PROJECT NO.	
SHEET NO.	
TITLE	
DATE	
BY	
PROJECT NO.	
SHEET NO.	
TITLE	



CONSTRUCTION BEGINS AT STA. 18+90

WILLETT HOFMANN & ASSOCIATES INC.
ENGINEERING ARCHITECTURE LAND SURVEYING

DESIGNED	-	IAN NILAUSEN	REVISED	-
CHECKED	-	BRAD KLEINMAIER	REVISED	-
DRAWN	-	RON ALLEN	REVISED	-
CHECKED	-	BRAD KLEINMAIER	REVISED	-

**BUREAU COUNTY
T.R. 398 OVER SPRING CREEK
STATION 20 + 00**

**CROSS SECTIONS
STRUCTURE NO. 006-4143**

SCALE: 1"=5'
SHEET NO. 1 OF 4 SHEETS
STA. 18+75.00 TO STA. 19+5.00

TWP.	SECTION	COUNTY	TOTAL SHEETS	SHEET NO.
398	09-10113-00-BR	BUREAU	19	16
WHA* 1004D12			CONTRACT NO. 87551	
ILLINOIS FED. AID PROJECT BR05-00110940				