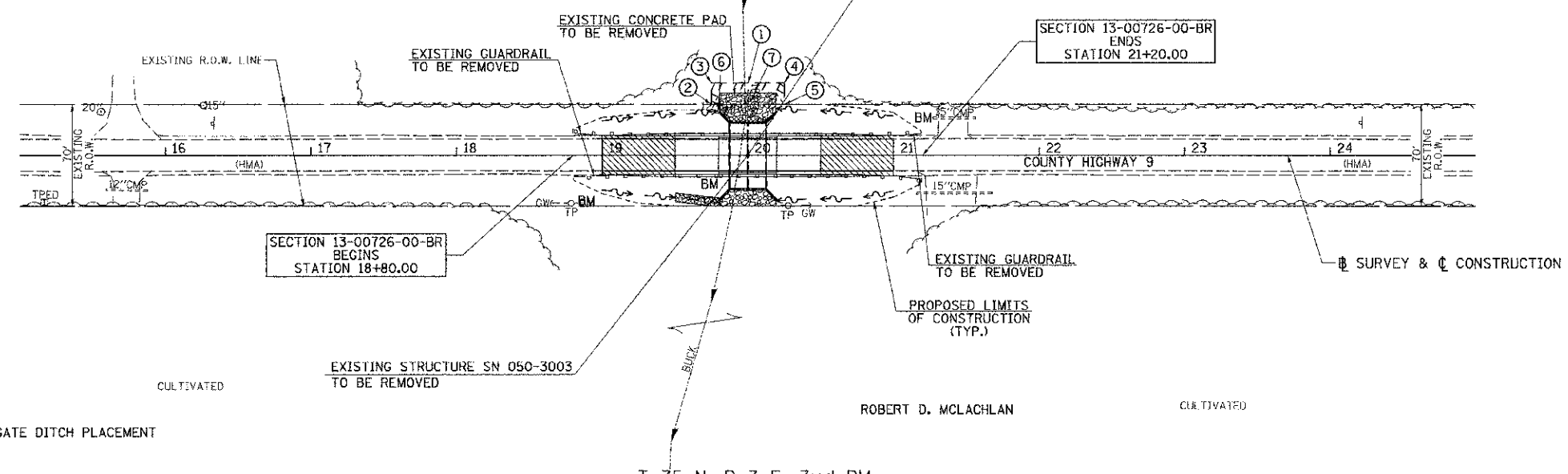


- ① TEMPORARY EASEMENT FOR PURPOSE OF CONCRETE REMOVAL AND RIPRAP PLACEMENT
- ② STA 19+75 35' LT
- ③ STA 19+75 50' LT
- ④ STA 20+25 50' LT
- ⑤ STA 20+25 35' LT
- ⑥ 12" CMP FIELD TILE (TO BE ADJUSTED)
- ⑦ 18" CMP FIELD TILE (TO BE ADJUSTED)



LEGEND

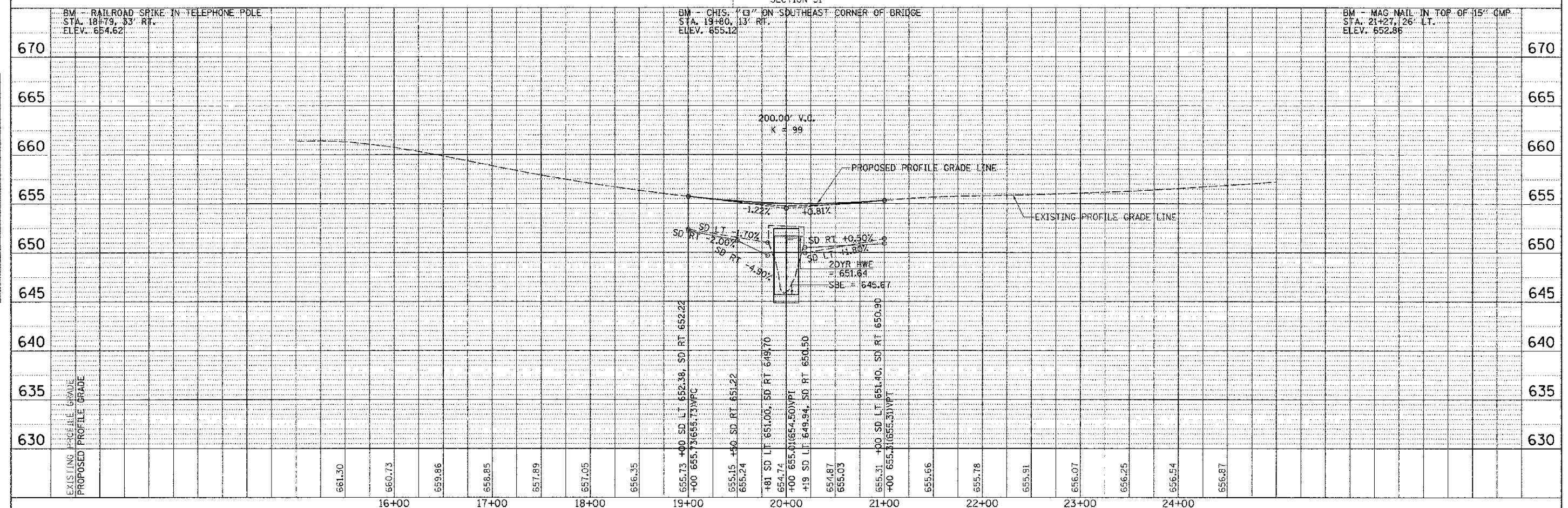
TRANSITION TO OR FROM EXISTING TO PROPOSED TYPICAL PAVEMENT

PROPOSED RIPRAP PLACEMENT / AGGREGATE DITCH PLACEMENT

SPECIAL DITCH WITH FLOW DIRECTION

DATE	
BY	
REVISIONS	
NO.	
DATE	
BY	
REVISIONS	
NO.	
DATE	
BY	
REVISIONS	
NO.	

DATE	
BY	
REVISIONS	
NO.	
DATE	
BY	
REVISIONS	
NO.	
DATE	
BY	
REVISIONS	
NO.	



FILE NAME: \\bridge\3282-Lasalle\3282p001.cgn	USER NAME: cthomas	DESIGNED: -	REVISED: -	LASALLE COUNTY COUNTY HIGHWAY 9 OVER BUCK CREEK	PLAN AND PROFILE		F.A.S. RTE. 174	SECTION 13-00726-00-BR	COUNTY LASALLE	TOTAL SHEETS 16	SHEET NO. 6	
PLCT SCALE: 50.0000 / 1"	CHECKED: -	REVISED: -	REVISED: -		SCALE: 1"=50'	SHEET 1	OF 1	SHEETS: STA. 18+80.00 TO STA. 21+00.00	CONTRACT NO. 87557		FED. ROAD DIST. NO. 7 ILLINOIS	FED. AID PROJECT ERS-0174019
PLOT DATE: 3/26/2013	DATE: -	REVISED: -	REVISED: -									