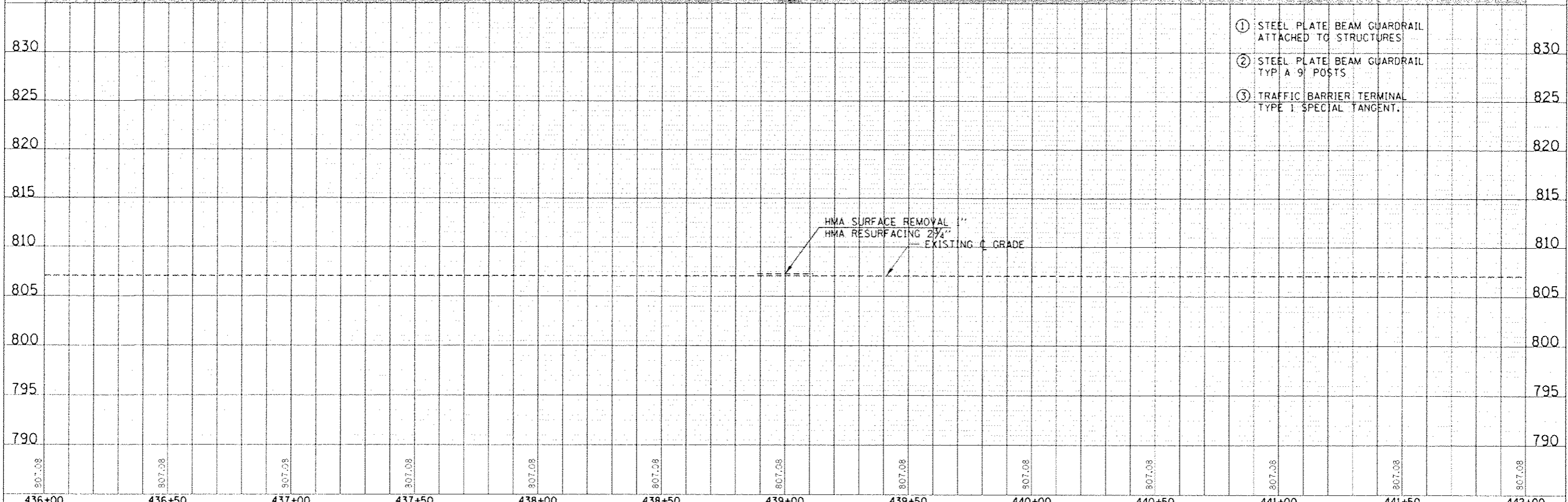
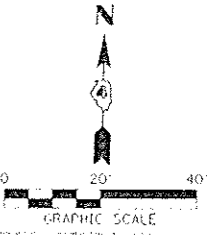
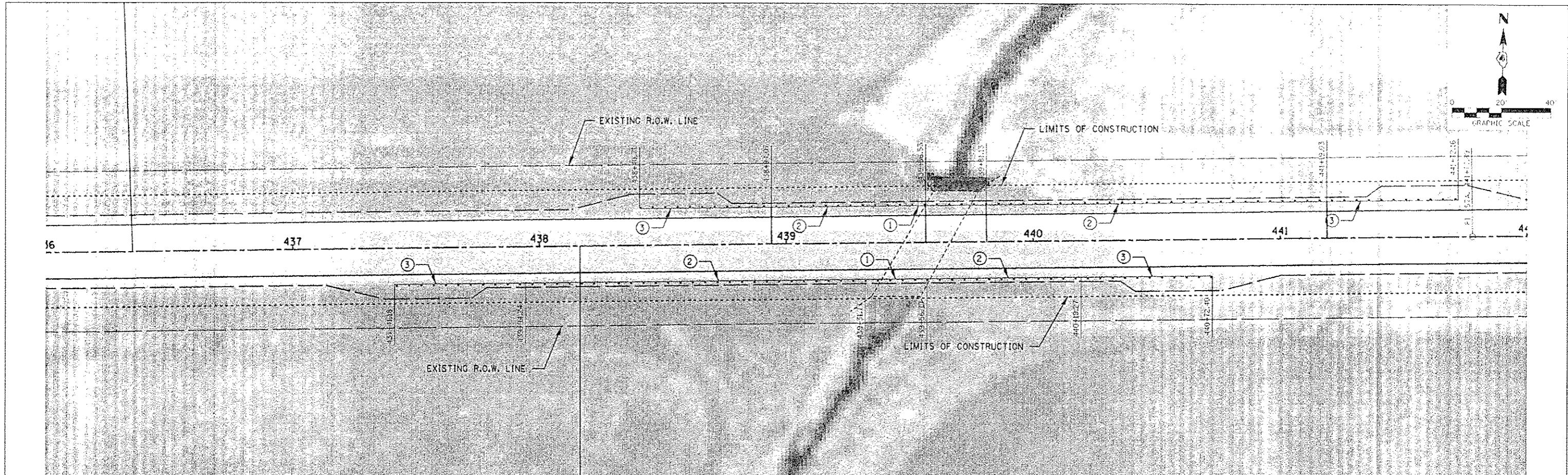


PLAN
 DATE 09/09/13
 DRAWN BY T.W.K.
 CHECKED BY L.F.S.
 DATE 03/27/13

PROFILE
 DATE 09/09/13
 DRAWN BY T.W.K.
 CHECKED BY L.F.S.
 DATE 03/27/13



- ① STEEL PLATE BEAM GUARDRAIL ATTACHED TO STRUCTURES
- ② STEEL PLATE BEAM GUARDRAIL TYP A 9' POSTS
- ③ TRAFFIC BARRIER TERMINAL TYPE 1 SPECIAL TANGENT.

FILE NAME: 100217-1101-1101-1101.dwg	USER NAME: *	DESIGNED: L.F.S.	REVISED: -	STATE OF ILLINOIS DEPARTMENT OF TRANSPORTATION	PLAN & PROFILE F.A.S. 247 / C.H. 21 / BRADFORD ROAD			F.A.S. 247	SECTION 09-00164-00-R5	COUNTY STARK	TOTAL SHEETS 12	SHEET NO. 6
HAMPTON, LENZINI AND RENWICK, INC.	SCALE: 1" = 40'	DRAWN: T.W.K.	REVISED: -		SCALE: 20'H:5V			SHEET NO. 7 OF 9 SHEETS			STA. 436+00.00 TO STA. 442+00.00	
3501 W. BEVERLY DRIVE, SUITE 201 MERRILLVILLE, INDIANA 46541	DATE: 03/27/13	CHECKED: L.F.S.	REVISED: -		ILLINOIS FED. AID PROJECT			CONTRACT NO. 89570				
ILLINOIS PROFESSIONAL DESIGN FIRM 5787 N. W. CORP. 184-00356		DATE: 03/27/13	REVISED: -									