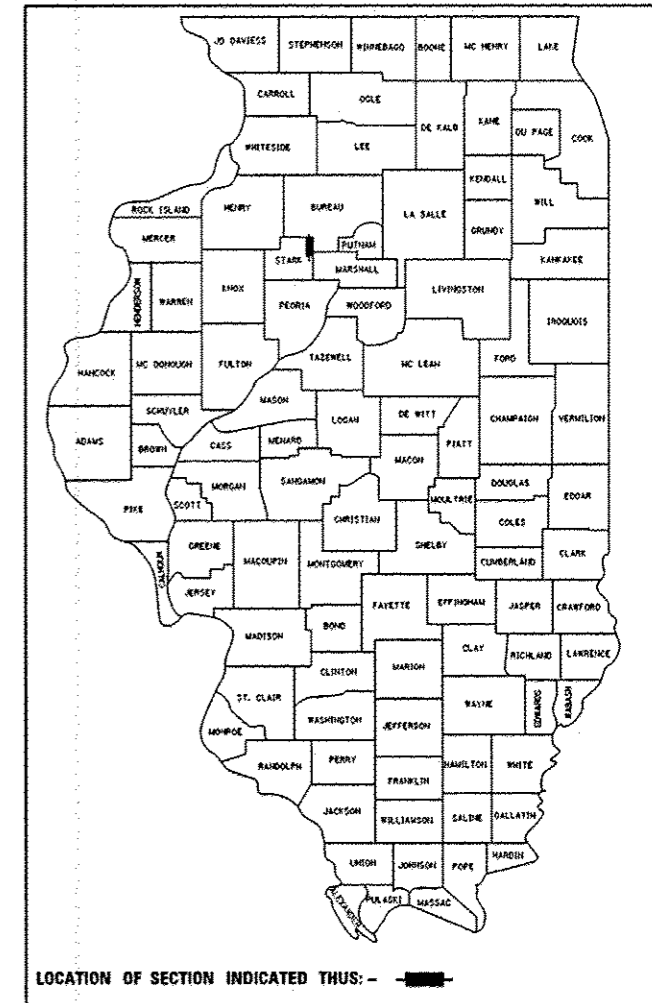


STATE OF ILLINOIS
DEPARTMENT OF TRANSPORTATION
DIVISION OF HIGHWAYS

**PLANS FOR PROPOSED
SURFACE TRANSPORTATION PROGRAM-RURAL**

ROUTE NO.	SECTION	COUNTY	TOTAL SHEETS	SHEET NO.
F.A.S. 247	09-00164-00-RS	STARK	12	1
FED. ROAD DIST. NO.		ILLINOIS CONTRACT NO. 88570		



FUNCTIONAL CLASSIFICATION: MAJOR COLLECTOR RURAL
DESIGN SPEED: 50 MPH
DESIGN TRAFFIC: ADT 1274 (2013)

INDEX OF SHEETS

SHEET NO.	DESCRIPTION
1.	COVER SHEET
2.	SUMMARY OF QUANTITIES AND GENERAL NOTES
3.	TYPICAL SECTIONS
4-8.	PLAN AND PROFILE
9.	ENTRANCE DETAILS
10-12.	STATION CROSS SECTIONS

HIGHWAY STANDARDS:

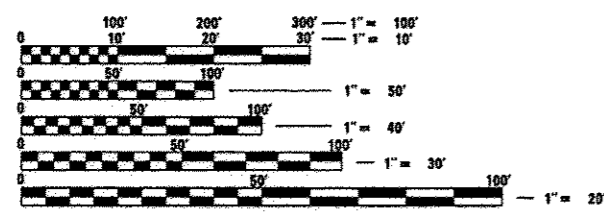
- 000001-06 * STANDARD SYMBOLS, ABBREVIATIONS, AND PATTERNS
- 630001-10 STEEL PLATE BEAM GUARDRAIL
- 630101-09 GUARDRAIL MOUNTED ON EXISTING CULVERTS
- 630301-06 GUARDRAIL WIDENING FOR TYPE 1. (SPECIAL) GUARDRAIL TERMINALS
- 635006-03 REFLECTOR AND TERMINAL MARKER PLACEMENT
- 635011-02 REFLECTOR MARKER AND MOUNTING DETAILS
- 701011-03 OFF-ROAD MOVING OPERATIONS 2L, 2W, DAY ONLY
- 701201-04 LANE CLOSURE, 2L, 2W, DAY ONLY, FOR SPEEDS > 45 MPH
- 701306-03 LANE CLOSURE, 2L, 2W, SLOW MOVING OPERATIONS-DAY ONLY FOR SPEEDS ≥ 45 MPH
- 701311-03 LANE CLOSURE, 2L, 2W, MOVING OPERATIONS, DAY ONLY
- 701901-02 TRAFFIC CONTROL DEVICES

442201-03 Class C and D Patches

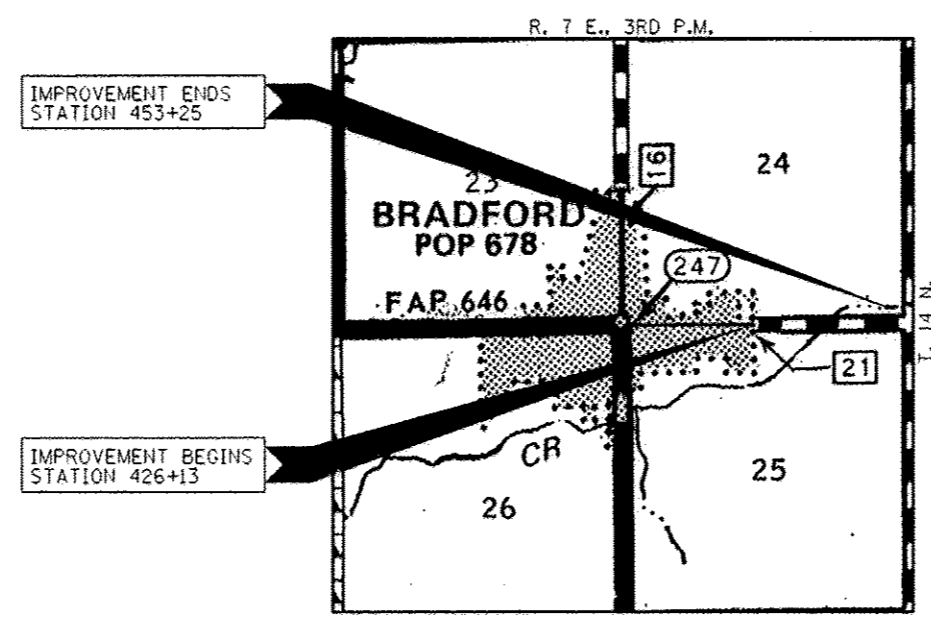
UTILITIES

AMEREN CILCO
300 LIBERTY STREET
PEORIA, IL 61602

VERIZON NORTH, INC.
111 S. MAIN ST.
KEWANEE, IL 61443

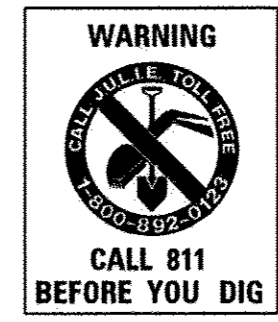


FULL SIZE PLANS HAVE BEEN PREPARED USING STANDARD ENGINEERING SCALES. REDUCED SIZED PLANS WILL NOT CONFORM TO STANDARD SCALES. IN MAKING MEASUREMENTS ON REDUCED PLANS, THE ABOVE SCALES MAY BE USED.



LOCATION MAP

APPROXIMATE SCALE: 0 1 MILE
NET LENGTH OF SECTION = 2712 FEET = 0.514 MILES



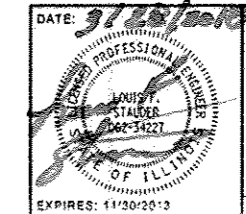
ILLINOIS DEPARTMENT OF TRANSPORTATION

APPROVED *April 1 2013*
Mark J. Oster
COUNTY ENGINEER

PASSED *04-03 2013*
[Signature]
DISTRICT FOUR ENGINEER
LOCAL ROAD DISTRICTS

Releasing For Bid Based on Limited Review
[Signature]
2013

DEPUTY DIRECTOR OF HIGHWAYS
REGION THREE ENGINEER
STATE OF ILLINOIS
DEPARTMENT OF TRANSPORTATION



HAMPTON, LENZINI AND RENWICK, INC.
CIVIL ENGINEERS • STRUCTURAL ENGINEERS • LAND SURVEYORS
3085 STEVENSON DRIVE, SUITE 201
SPRINGFIELD, ILLINOIS 62703
217.548.3400 www.hlrengineering.com
184.000958
ILLINOIS PROFESSIONAL DESIGN FIRM LS / PE / SE CORPORATION

SUMMARY OF QUANTITIES				
ITEM #	CODE #	ITEM	UNIT	QUANTITY
1	20400800	FURNISHED EXCAVATION	CU YD	20
2	40200800	AGGREGATE SURFACE COURSE, TYPE B	TON	65
3	40600115	POLYMERIZED BITUMINOUS MATERIALS (PRIME COAT)	GALLON	1027
4	40600300	AGGREGATE (PRIME COAT)	TON	13
5	40600827	POLYMERIZED LEVELING BINDER (MACHINE METHOD), IL-4.75, N50	TON	271
6	40600982	HOT-MIX ASPHALT SURFACE REMOVAL - BUTT JOINT	SQ YD	391
7	40600990	TEMPORARY RAMP	SQ YD	46
8	40603510	POLYMERIZED HOT-MIX ASPHALT SURFACE COURSE, MIX "C", N50	TON	764
9	40800050	INCIDENTAL HOT-MIX ASPHALT SURFACING	TON	10
10	44000153	HOT-MIX ASPHALT SURFACE REMOVAL, 1"	SQ YD	6458
11	44201711	CLASS D PATCHES, TYPE IV, 5 INCH	SQ YD	240
12	48102100	AGGREGATE WEDGE SHOULDER, TYPE B	TON	124
* 13	63000003	STEEL PLATE BEAM GUARDRAIL, TYPE A, 9 FOOT POSTS	FOOT	400
* 14	63000025	STEEL PLATE BEAM GUARDRAIL, ATTACHED TO STRUCTURES	FOOT	50
* 15	63100167	TRAFFIC BARRIER TERMINAL, TYPE 1 (SPECIAL) TANGENT	EACH	4
16	63200310	GUARDRAIL REMOVAL	FOOT	25
17	67100100	MOBILIZATION	L SUM	1
18	70100460	TRAFFIC CONTROL AND PROTECTION, STANDARD 701306	L SUM	1
19	70300100	SHORT TERM PAVEMENT MARKING	FOOT	544
* 20	78001110	PAINT PAVEMENT MARKING - LINE 4"	FOOT	6102
* 21	78200410	GUARDRAIL MARKERS, TYPE A	EACH	10
* 22	78201000	TERMINAL MARKER - DIRECT APPLIED	EACH	4
23	Z0034105	MATERIAL TRANSFER DEVICE	TON	764

SEE SPECIAL PROVISIONS

*** SPECIALTY ITEMS**

EARTHWORK SUMMARY						
LOCATION	EARTH EXCAVATION	SHRINKAGE FACTOR	% USED	EARTH EXCAVATION ADJUSTED FOR SHRINKAGE (25%)	EMBANKMENT REQUIRED	EARTHWORK BALANCE WASTE (+) OR SHORTAGE (-)
	CUBIC YARD			CUBIC YARD	CUBIC YARD	CUBIC YARD
FAS 247/CH21/BRADFORD RD						
STA 437+07 TO STA 442+06	0	25.00%	100.00%	0	20	-20
	0			0	20	-20
20400800 FURNISHED EXCAVATION				20		CU.YD.

PAVEMENT MARKING SCHEDULE			
LOCATION	PAINT PAVEMENT MARKING PERMANENT		SHORT TERM PAVEMENT MARKING
	4" SINGLE WHITE EDGE LINE	4" SINGLE YELLOW CENTERLINE	
	78001110 FOOT	78001110 FOOT	70300100 FOOT
FAS 247/CH21/BRADFORD RD			
RT. STA 426+13 TO RT. STA 453+25	2712		
CL. STA 426+13 TO CL. STA 453+25		678	544
LT. STA 426+13 TO LT. STA 453+25	2712		
SUBTOTAL	5424	678	544
TOTAL	6102		544

Z0034105 MATERIAL TRANSFER DEVICE SCHEDULE	
LOCATION	TON
FAS 247/CH21/BRADFORD RD	
CL. STA 426+13 TO CL. STA 453+25	764
TOTAL	764

44201711 CLASS D PATCHES, TYPE IV, 5 INCH	
LOCATION	SQ YD
FAS 247/CH21/BRADFORD RD	
LOCATION 1" (92 X 6)	61
LOCATION 2" (60 X 12)	80
LOCATION 3" (162 X 2)	36
LOCATION 4" (190 X 3)	63
* LOCATION TO BE DETERMINED BY ENGINEER	
TOTAL	240

GENERAL NOTES
 1 ALL CONSTRUCTION SHALL BE DONE IN ACCORDANCE WITH THE STATE OF ILLINOIS "STANDARD SPECIFICATIONS FOR ROAD AND BRIDGE CONSTRUCTION, ADOPTED JANUARY 1, 2012." THESE PLANS AND THE SPECIAL PROVISIONS INCLUDED IN THE CONTRACT DOCUMENTS.

2 THE ROAD SHALL BE OPEN TO TRAFFIC AT ALL TIMES

3 THE ELEVATIONS SHOWN ON THE PLANS ARE AN ASSUMED DATUM AND ARE NOT U.S.G.S. DATUM.

4 THE LOCATIONS OF EXISTING GAS MAINS, ELECTRIC POWER LINES, TELEPHONE LINES AND OTHER UTILITIES AS SHOWN ON THE PLANS ARE BASED ON CAREFUL FIELD INVESTIGATION AND THE BEST INFORMATION AVAILABLE, BUT THE LOCATIONS ARE NOT GUARANTEED. IT SHALL BE THE CONTRACTOR'S RESPONSIBILITY TO ASCERTAIN THEIR EXACT LOCATION FROM THE INDIVIDUAL UTILITY COMPANIES AND BY FIELD INSPECTION.

5 THE FOLLOWING RATES OF APPLICATION HAVE BEEN USED IN CALCULATING PLAN QUANTITIES:

AGGREGATE BASE COURSE, TYPE B	2.05 TON/CU.YD.
AGGREGATE (PRIME COAT)	4 LBS/SQ.YD.
POLYMERIZED LEVELING BINDER	112 LBS/SQ.YD./INCH THICKNESS
HMA SURFACE COURSE	112 LBS/SQ.YD./INCH THICKNESS
AGGREGATE SHOULDER WEDGE, TYPE B	2.05 TON/CU.YD.

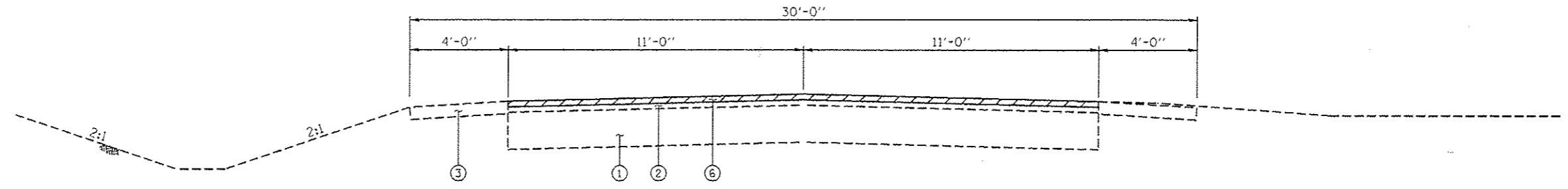
POLYMERIZED BITUMINOUS MATERIALS (PRIME COAT) RATES

SURFACE TYPE	ESTIMATED TRUCK APPLICATION RATE	RESIDUAL RATE
MILLED (HMA OR PCC)	0.10 GAL/SY (0.0004 TON/SY)	0.05 GAL/SY
EXISTING PAVEMENT	0.05 GAL/SY (0.00022 TON/SY)	0.025 GAL/SY
FOG COAT (BETWEEN LIFTS)	0.05 GAL/SY (0.00022 TON/SY)	0.025 GAL/SY

NOTE: ESTIMATED TRUCK APPLICATION RATE IS USED FOR ESTIMATING QUANTITIES

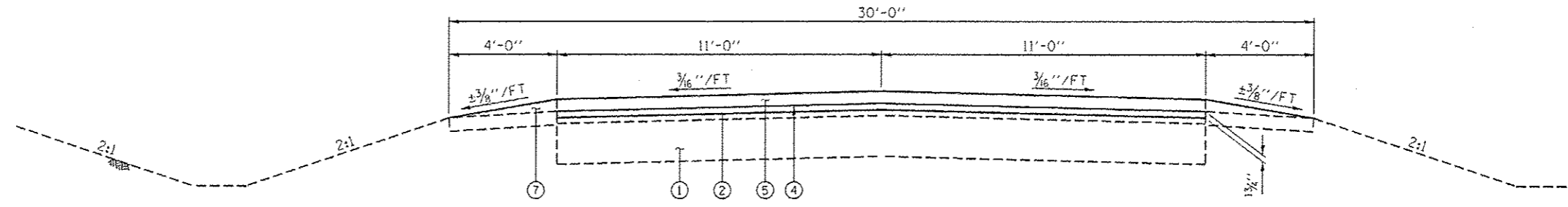
GUARDRAIL SCHEDULE						
LOCATION	STEEL PLATE BEAM GUARD RAIL TYPE A 9 FOOT POSTS	STEEL PLATE BEAM GUARD RAIL ATTACHED TO STRUCTURES	TRAFFIC BARRIER TERMINAL TYPE 1 SPECIAL (TANGENT)	GUARD RAIL REMOVAL	TERMINAL MARKER DIRECT APPLIED	GUARDRAIL MARKERS TYPE A
	63000003	63000025	63100167	63200310	78201000	78200410
FAS 247/CH21/BRADFORD RD	FOOT	FOOT	EACH	FOOT	EACH	EACH
RT. STA 437+41.15 TO RT. STA 440+72.40	200	25	2		2	5
LT. STA 438+40.91 TO LT. STA 441+72.16	200	25	2		2	5
LT. STA 439+56.53 TO LT. STA 439+81.53				25		
TOTAL	400	50	4	25	4	10

ROADWAY SCHEDULE											
LOCATION	AGGREGATE SURFACE COURSE TYPE B	POLYMERIZED BITUMINOUS MATERIALS (PRIME COAT) TACK COAT	POLYMERIZED BITUMINOUS MATERIALS (PRIME COAT) FOG COAT	AGGREGATE (PRIME COAT)	POLYMERIZED LEVELING BINDER (MACHINE METHOD) IL-4.75, N50	HOT-MIX ASPHALT SURFACE REMOVAL BUTT JOINT	TEMPORARY RAMP	HOT-MIX ASPHALT SURFACE COURSE MIX "C", N50	INCIDENTAL HOT-MIX ASPHALT SURFACING	HOT-MIX ASPHALT SURFACE REMOVAL 1"	AGGREGATE WEDGE SHOULDER TYPE B
	40200800 TON	40600115 GAL	40600115 GAL	40600300 TON	40600827 TON	40600982 SQ YD	40600990 SQ YD	40603510 TON	40800050 TON	44000153 SQ YD	48101200 TON
FAS 247/CH21/BRADFORD RD											
STA 426+13 TO STA 453+25	65	663	332	13	271	171	24	742	10	6,458	120
SR. LT. STA 452+84.13		11	5	0	0	110	11	11	0	0	2
SR. RT. STA 452+84.13	0	11	5	0	0	110	11	11	0	0	2
SUB TOTAL	65	685	342	13	271	391	46	764	10	6458	124
TOTAL	65		1027	13	271	391	46	764	10	6458	124



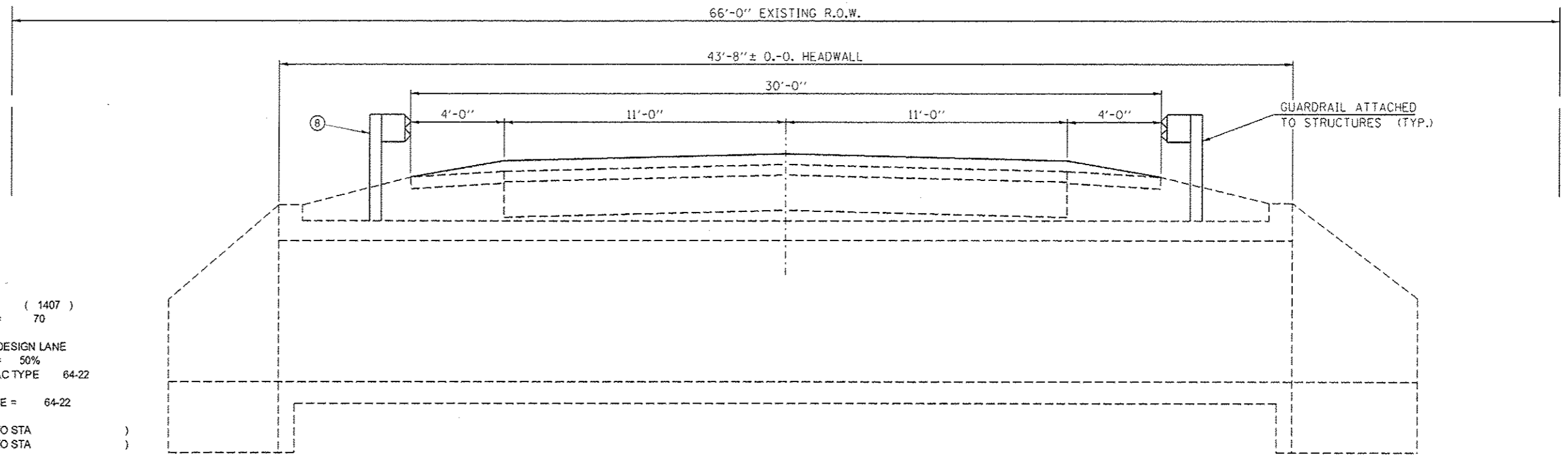
EXISTING TYPICAL CROSS SECTION

STA. 426+13 TO STA. 453+25



PROPOSED OVERLAY TYPICAL CROSS SECTION

STA. 426+13 TO STA. 453+25



PROPOSED TYPICAL CROSS SECTION

STA. 439+57

PAVEMENT DESIGN (MECHANISTIC)

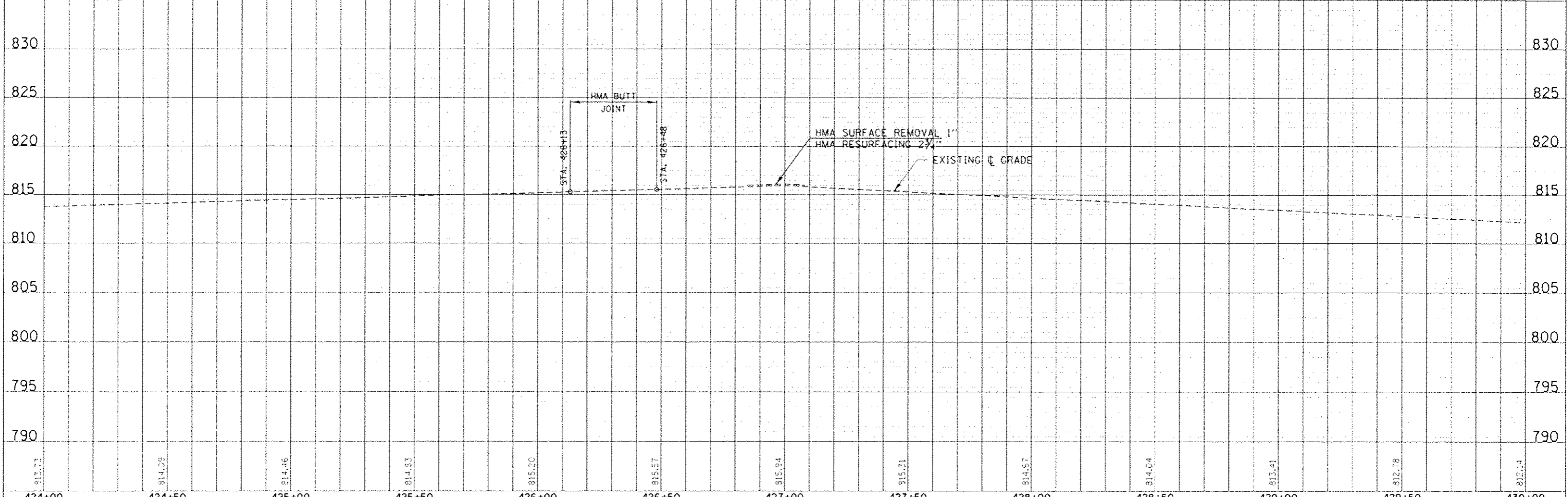
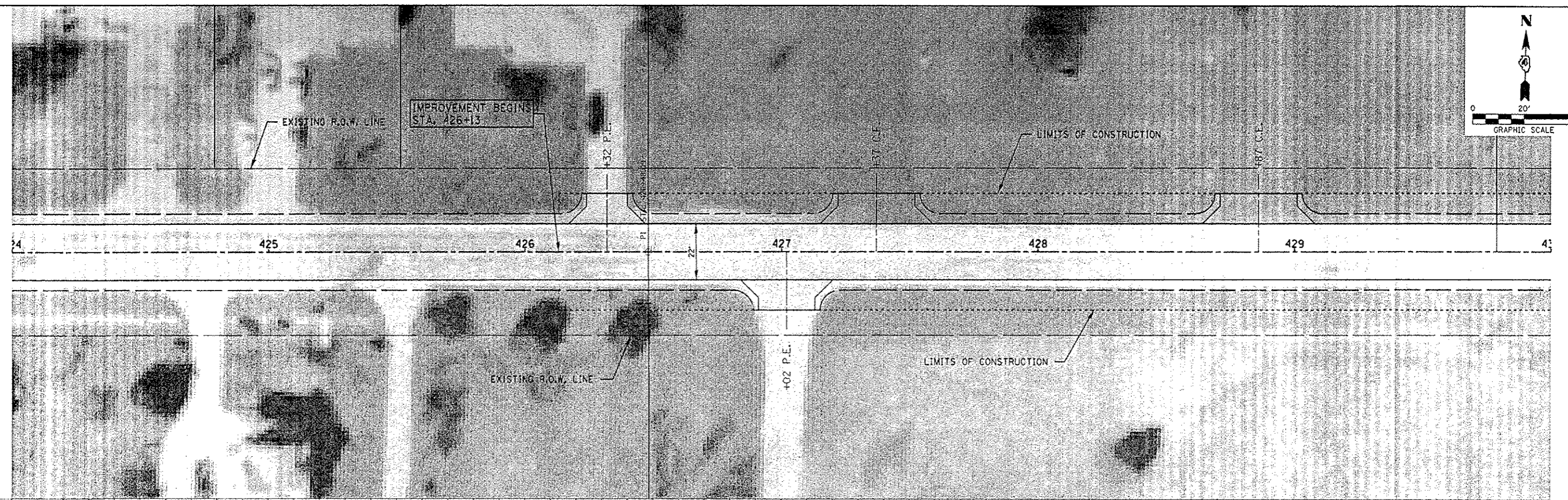
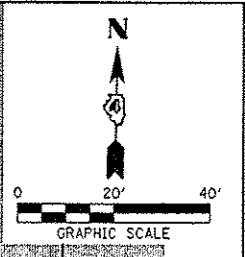
DESIGN PERIOD 20 YEARS 0
 STRUCTURAL DESIGN TRAFFIC (SDT) = 2023 (1407)
 PV = 1238 SU = 98 MU = 70
 ROAD/STREET CLASSIFICATION: CLASS III
 PERCENT OF STRUCTURAL DESIGN TRAFFIC IN DESIGN LANE
 P = 50% S = 50% MU = 50%
 TRAFFIC FACTOR ACTUAL TF 0.38 AC TYPE 64-22
 MINIMUM TF
 PG GRADE: BINDER = 64-22 SURFACE = 64-22
 SUBGRADE SUPPORT RATING
 SSR= POOR (STA. TO STA.)
 SSR= POOR (STA. TO STA.)

LEGEND

- ① EXISTING AGGREGATE BASE
- ② EXISTING BITUMINOUS PAVEMENT
- ③ EXISTING AGGREGATE SHOULDER
- ④ POLYMERIZED LEVELING BINDER (MACHINE METHOD), IL-4.75, N50 3/4"
- ⑤ Polymerized Hot Mix Asphalt Surface Course, Mix "C" N50 3/4"
- ⑥ HOT MIX ASPHALT SURFACE REMOVAL 1"
- ⑦ AGGREGATE WEDGE SHOULDER, TYPE B
- ⑧ PROPOSED STEEL PLATE BEAM GUARDRAIL AND TRAFFIC BARRIER TERMINAL, RT. STA. 437+41.15 TO RT. STA. 440+72.40
 LT. STA. 438+40.91 TO LT. STA. 441+72.16

MIXTURE REQUIREMENTS	
LOCATION(S):	FAS 247/CH21/BRADFORD ROAD
MIXTURE USE(S):	POLYMERIZED HMA SURF. CSE, MIX "C", N50 & INCIDENTAL SURFACING
AC/PG:	SBS OR SBR 76-22
RAP % (MAX):	SEE BDE 80306
DESIGN AIR VOIDS:	4% @ Ndes 50
MIXTURE COMPOSITION:	IL 9.5 OR IL 12.5
(GRADATION MIXTURE):	
FRICTION AGGREGATE:	MIXTURE C
MIXTURE WEIGHTS:	112 LBS \ SY \ INCH THICKNESS

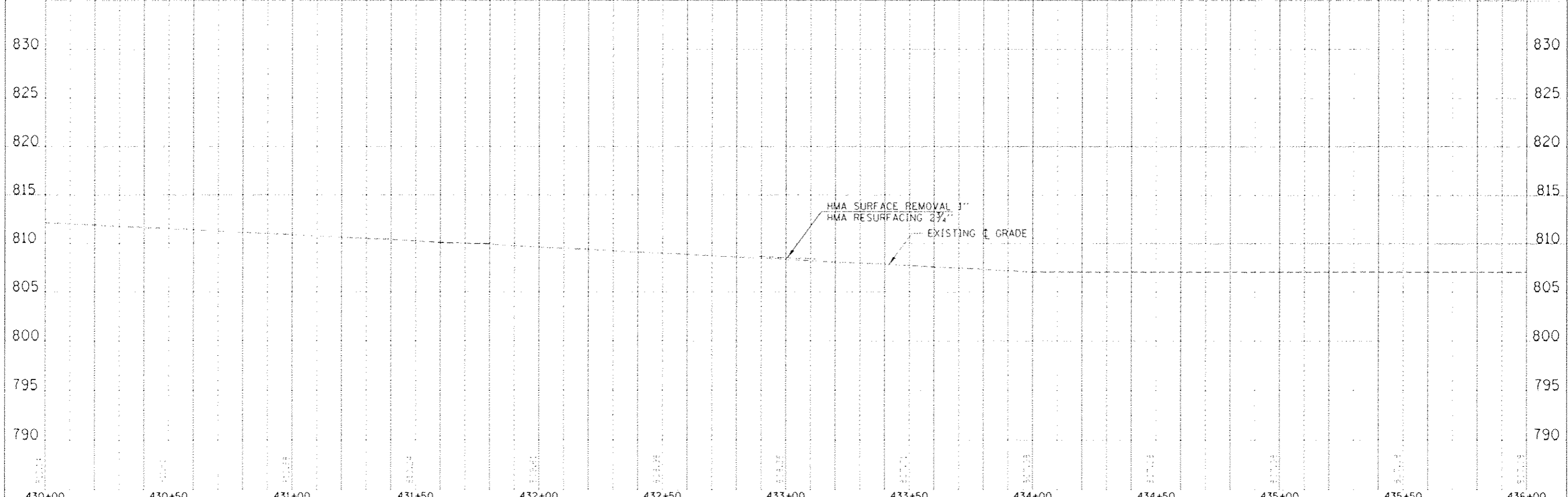
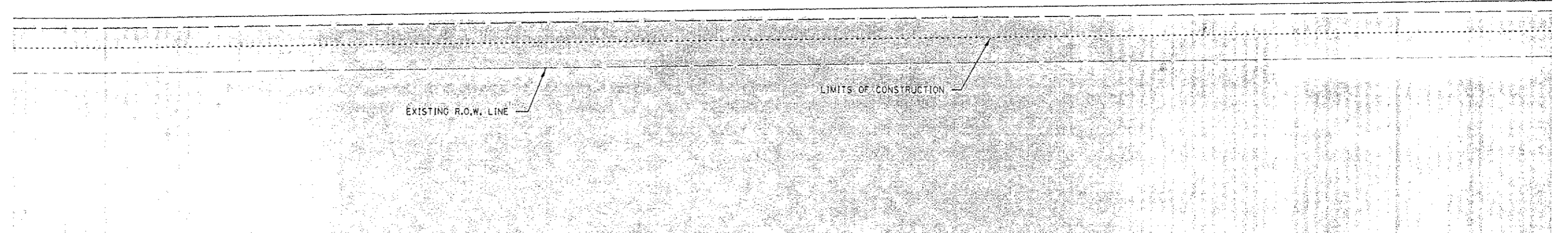
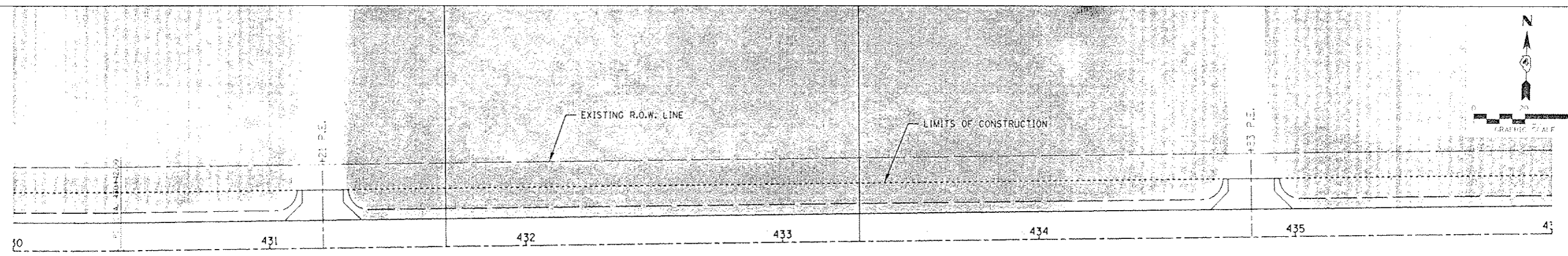
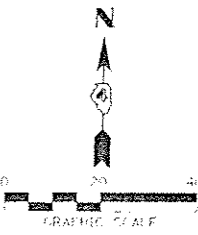
MIXTURE REQUIREMENTS	
LOCATION(S):	FAS 247/CH21/BRADFORD ROAD
MIXTURE USE(S):	POLYMERIZED LEVELING BINDER (MACHINE METHOD), IL-4.75, N50
AC/PG:	SBS OR SBR 76-22
RAP % (MAX):	SEE BDE 80306
DESIGN AIR VOIDS:	4% @ Ndes 50
MIXTURE COMPOSITION:	IL-4.75
(GRADATION MIXTURE):	
FRICTION AGGREGATE:	NONE
MIXTURE WEIGHTS:	112 LBS \ SY \ INCH THICKNESS



DATE	
BY	
PROJECT	
DATE	
BY	
PROJECT	
DATE	
BY	
PROJECT	

DATE	
BY	
PROJECT	
DATE	
BY	
PROJECT	
DATE	
BY	
PROJECT	

FILE NAME	USER NAME	DESIGNED - L.F.S.	REVISOR	STATE OF ILLINOIS DEPARTMENT OF TRANSPORTATION	PLAN & PROFILE F.A.S. 247 / C.H. 21 / BRADFORD ROAD			F.A.S.	SECTION	COUNTY	TOTAL SHEETS	SHEET NO.	
HAMPTON, LENZINI AND RENWICK, INC.		DRAWN - T.W.K.	REVISOR		247	09-00164-00-RS	STARK	12	4				
1100 S. WASHINGTON ST. SUITE 201 CHICAGO, ILLINOIS 60605		CHECKED - L.F.S.	REVISOR		CONTRACT NO. 89570								
ILLINOIS PROFESSIONAL ENGINEERING NO. 031-000000-000000		DATE - 03/21/13	REVISOR		ILLINOIS FED. AID PROJECT								
SCALE: 20H:5V				SHEET NO. 5 OF 9 SHEETS				STA. 424+00.00 TO STA. 430+00.00					

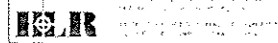


430+00	430+50	431+00	431+50	432+00	432+50	433+00	433+50	434+00	434+50	435+00	436+00
DESIGNED BY	DRAWN BY	CHECKED BY	DATE	REVIEWED BY	REVIEWED BY	REVIEWED BY	REVIEWED BY	REVIEWED BY	REVIEWED BY	REVIEWED BY	REVIEWED BY

STATE OF ILLINOIS
DEPARTMENT OF TRANSPORTATION

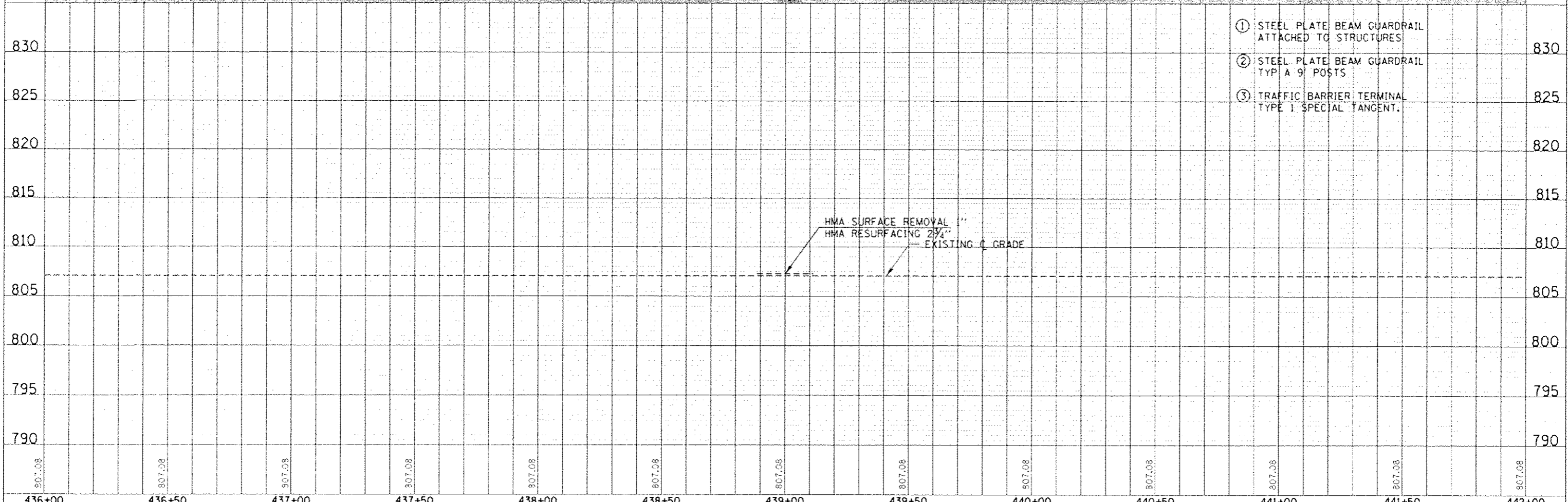
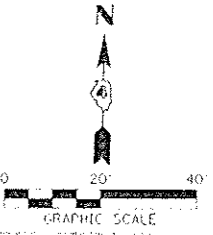
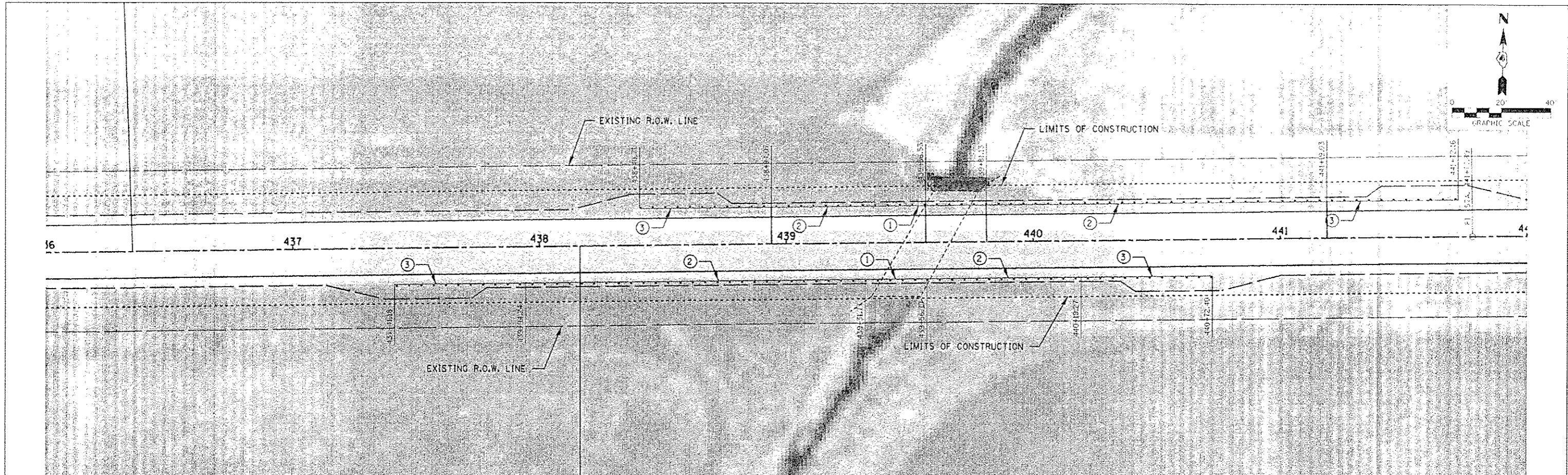
PLAN & PROFILE
F.A.S. 247 / C.H. 21 / BRADFORD ROAD

CONTRACT NO. 89570



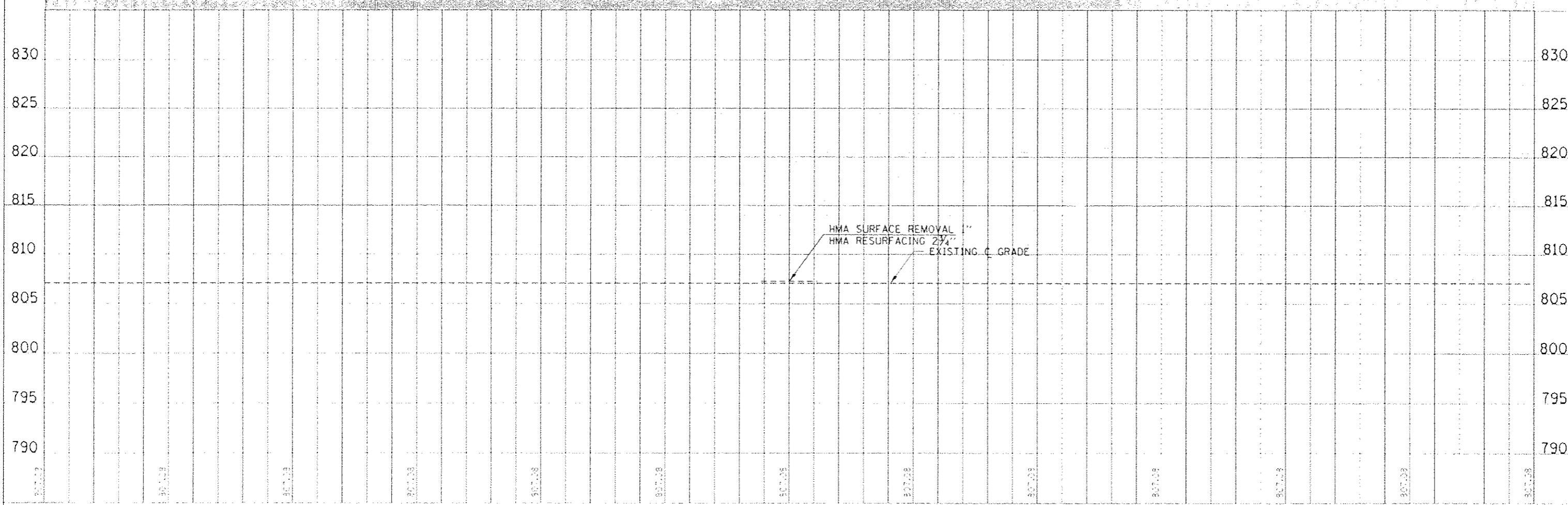
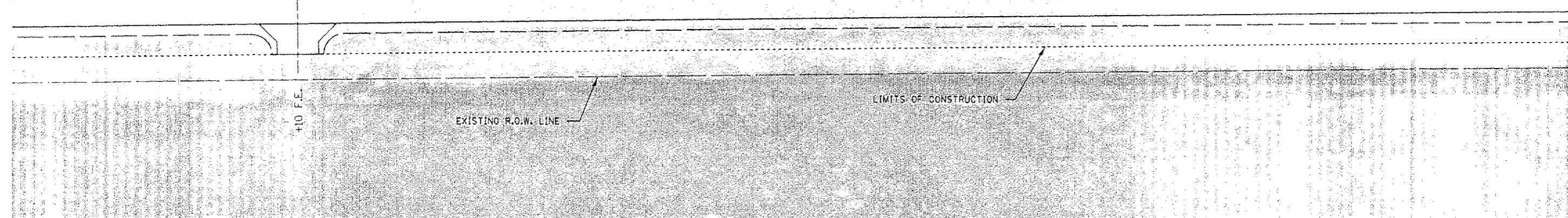
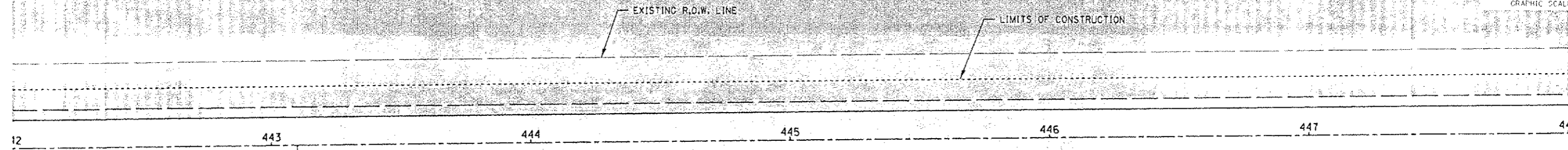
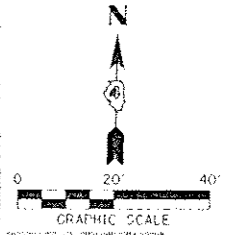
PLAN
 DATE 09/09/13
 DRAWN BY T.W.K.
 CHECKED BY L.F.S.
 DATE 03/27/13

PROFILE
 DATE 09/09/13
 DRAWN BY T.W.K.
 CHECKED BY L.F.S.
 DATE 03/27/13



- ① STEEL PLATE BEAM GUARDRAIL ATTACHED TO STRUCTURES
- ② STEEL PLATE BEAM GUARDRAIL TYP A 9' POSTS
- ③ TRAFFIC BARRIER TERMINAL TYPE 1 SPECIAL TANGENT.

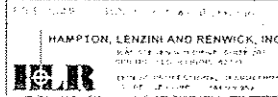
436+00	436+50	437+00	437+50	438+00	438+50	439+00	439+50	440+00	440+50	441+00	441+50	442+00
DESIGNED - L.F.S.	REVISOR -	DRAWN - T.W.K.	CHECKED - L.F.S.	DATE - 03/27/13	STATE OF ILLINOIS DEPARTMENT OF TRANSPORTATION			PLAN & PROFILE F.A.S. 247 / C.H. 21 / BRADFORD ROAD			F.A.S. 247 COUNTY STARK CONTRACT NO. 89570	TOTAL SHEETS 12 SHEET NO. 6



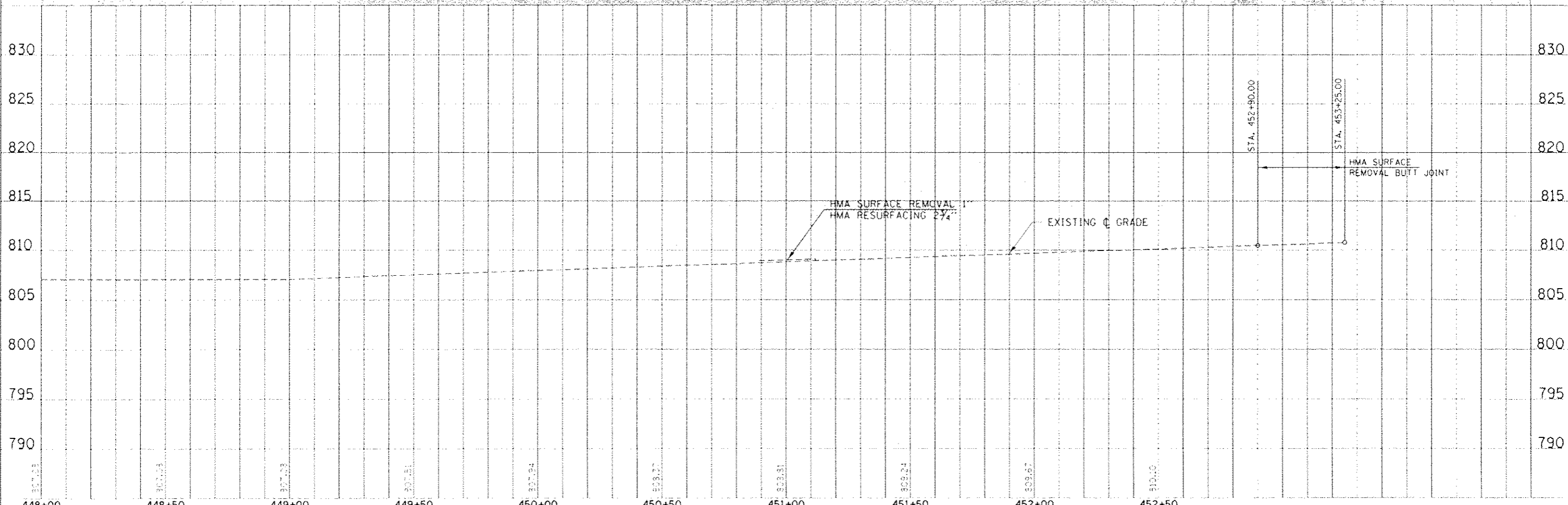
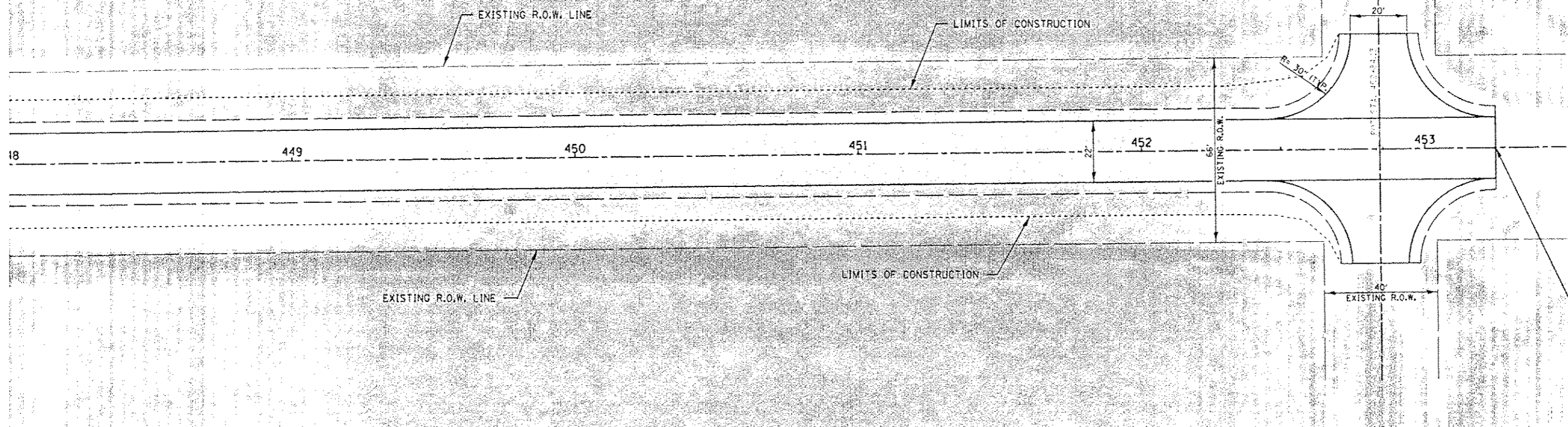
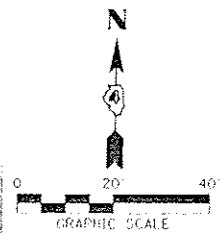
442+00	442+50	443+00	443+50	444+00	444+50	445+00	445+50	446+00	446+50	447+00	447+50	448+00			
DESIGNED: J.F.S. DRAWN: J.W.Y. CHECKED: J.F.S. DATE: 03-27-11				REVISED: _____ REVISED: _____ REVISED: _____ REVISED: _____				STATE OF ILLINOIS DEPARTMENT OF TRANSPORTATION				PLAN & PROFILE F.A.S. 247 / C.H. 21 / BRADFORD ROAD		F.A.S. 247 SECTION 09 09164 09 65 CONTRACT NO. 89570	

PROJECT: F.A.S. 247 / C.H. 21 / BRADFORD ROAD
 SHEET NO. 8 OF 9 SHEETS
 DATE: 03-27-11

CONTRACT NO. 89570
 SHEET NO. 8 OF 9 SHEETS
 DATE: 03-27-11



SCALE: 20H/5V SHEET NO. 8 OF 9 SHEETS STA. 442+00.00 TO STA. 448+00.00
 ILLINOIS STATE PROJECT



448+00	448+50	449+00	449+50	450+00	450+50	451+00	451+50	452+00	452+50
DESIGNED	L.F.C.	REVISOR		REVISOR		REVISOR		REVISOR	
DRAWN	T.W.K.	REVISOR		REVISOR		REVISOR		REVISOR	
CHECKED	L.F.C.	REVISOR		REVISOR		REVISOR		REVISOR	
DATE	05/27/13	REVISOR		REVISOR		REVISOR		REVISOR	

STATE OF ILLINOIS
DEPARTMENT OF TRANSPORTATION

PLAN & PROFILE
F.A.S. 247 / C.H. 21 / BRADFORD ROAD

SCALE: 20H:5V SHEET NO. 9 OF 9 SHEETS STA. 448+00.00 TO STA. 452+84.13

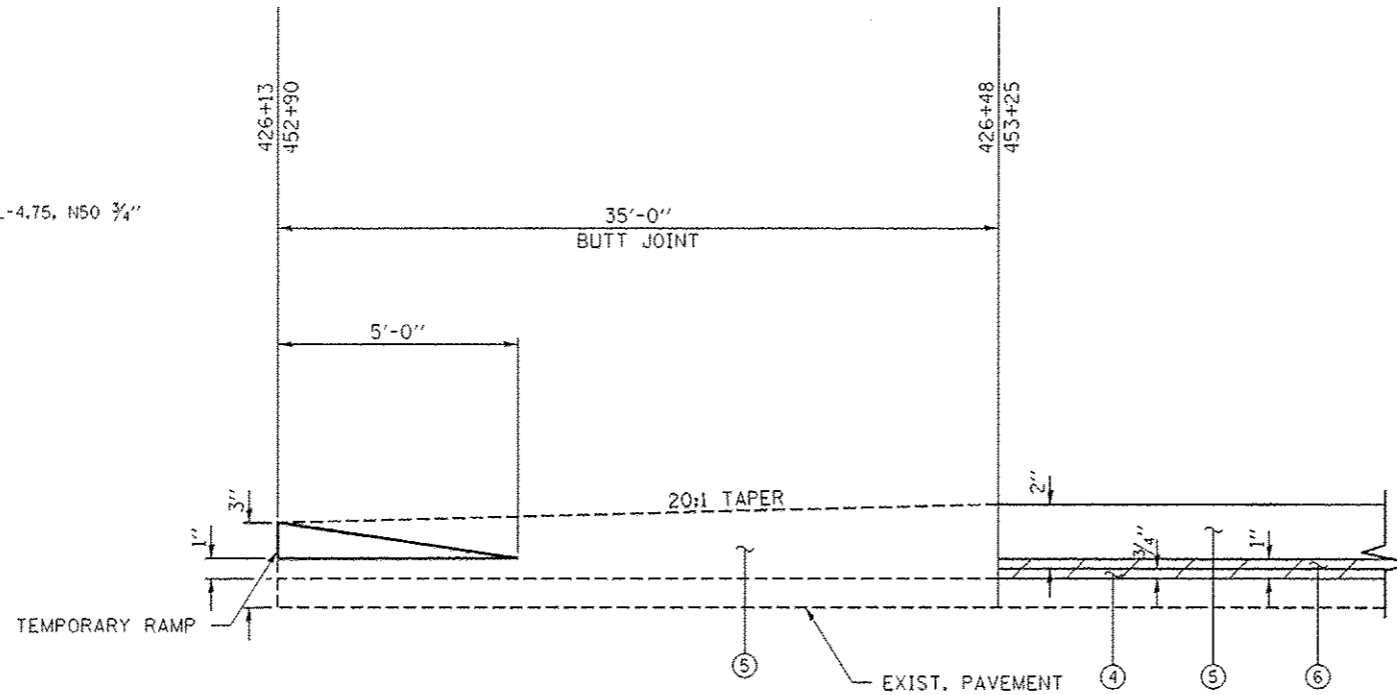
F.A.S.	SECTION	CURVE	TOTAL SHEETS
247	09-00164 00 RS	STARK	12
			8
			CONTRACT NO. 89570

PROJECT NO. 09-00164
 SHEET NO. 9 OF 9
 DATE 05/27/13
 DRAWN BY T.W.K.
 CHECKED BY L.F.C.
 DESIGNED BY L.F.C.

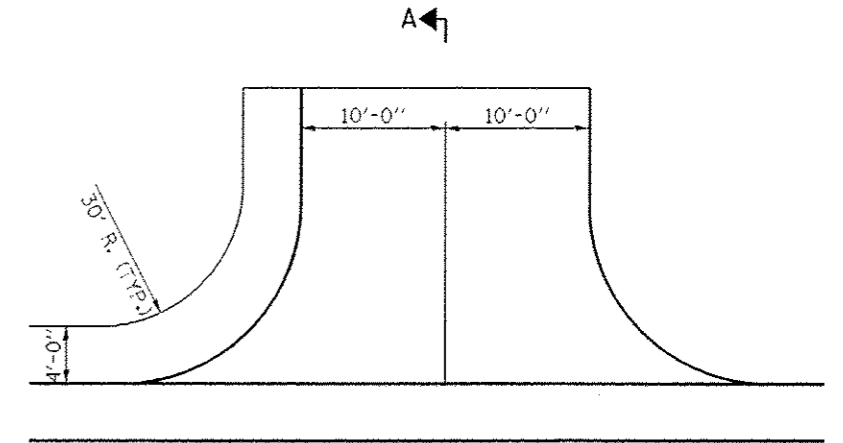
HMA SURFACE REMOVAL 1"
 HMA RESURFACING 2 3/4"
 EXISTING Q GRADE
 HMA SURFACE REMOVAL BUTT JOINT

LEGEND

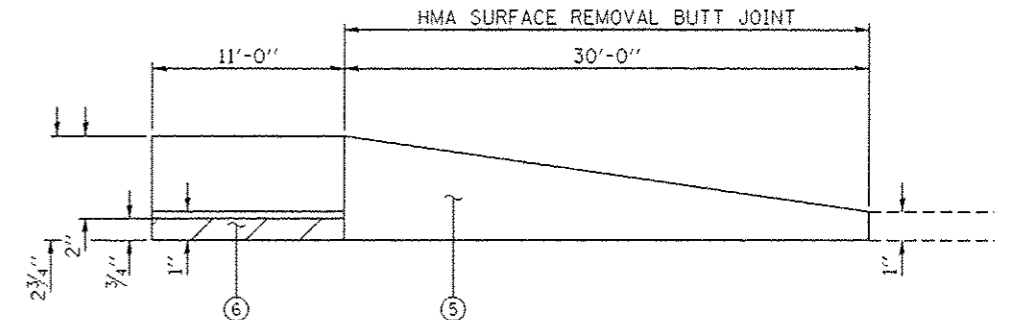
- ① EXISTING AGGREGATE BASE
- ② EXISTING BITUMINOUS PAVEMENT
- ③ EXISTING AGGREGATE SHOULDER
- ④ POLYMERIZED LEVELING BINDER (MACHINE METHOD), IL-4.75, NSO 3/4"
- ⑤ HOT MIX ASPHALT SURFACE COURSE, MIX "C", NSO 2"
- ⑥ HOT MIX ASPHALT SURFACE REMOVAL 1"
- ⑦ AGGREGATE WEDGE SHOULDER, TYPE B



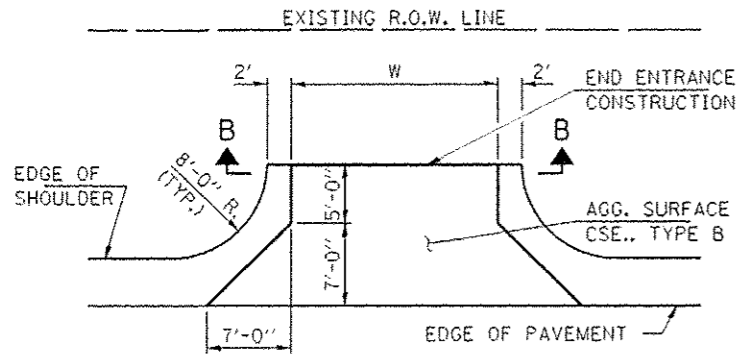
BUTT JOINT DETAIL



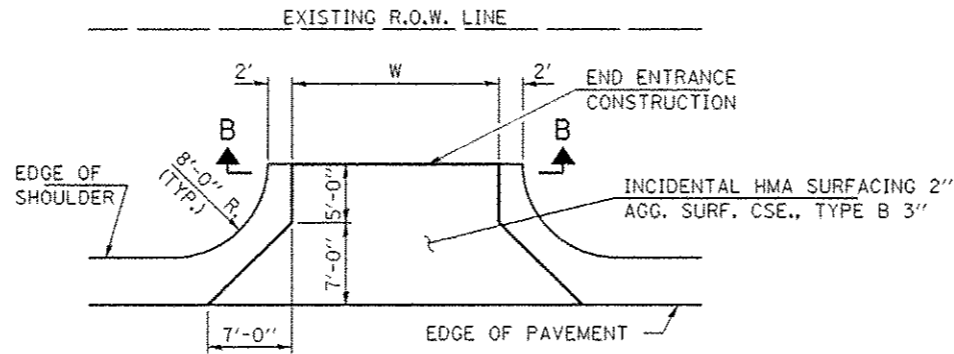
SIDEROAD DETAIL
L.I. STA. 452+84.13
R.T. STA. 452+84.13



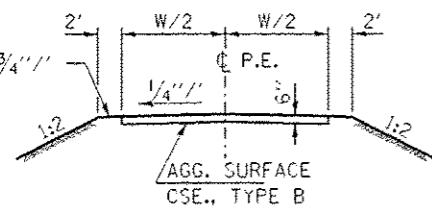
SECTION A-A



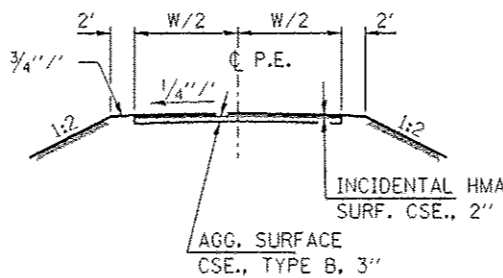
PRIVATE & FIELD ENTRANCE DETAIL



COMMERCIAL ENTRANCE DETAIL

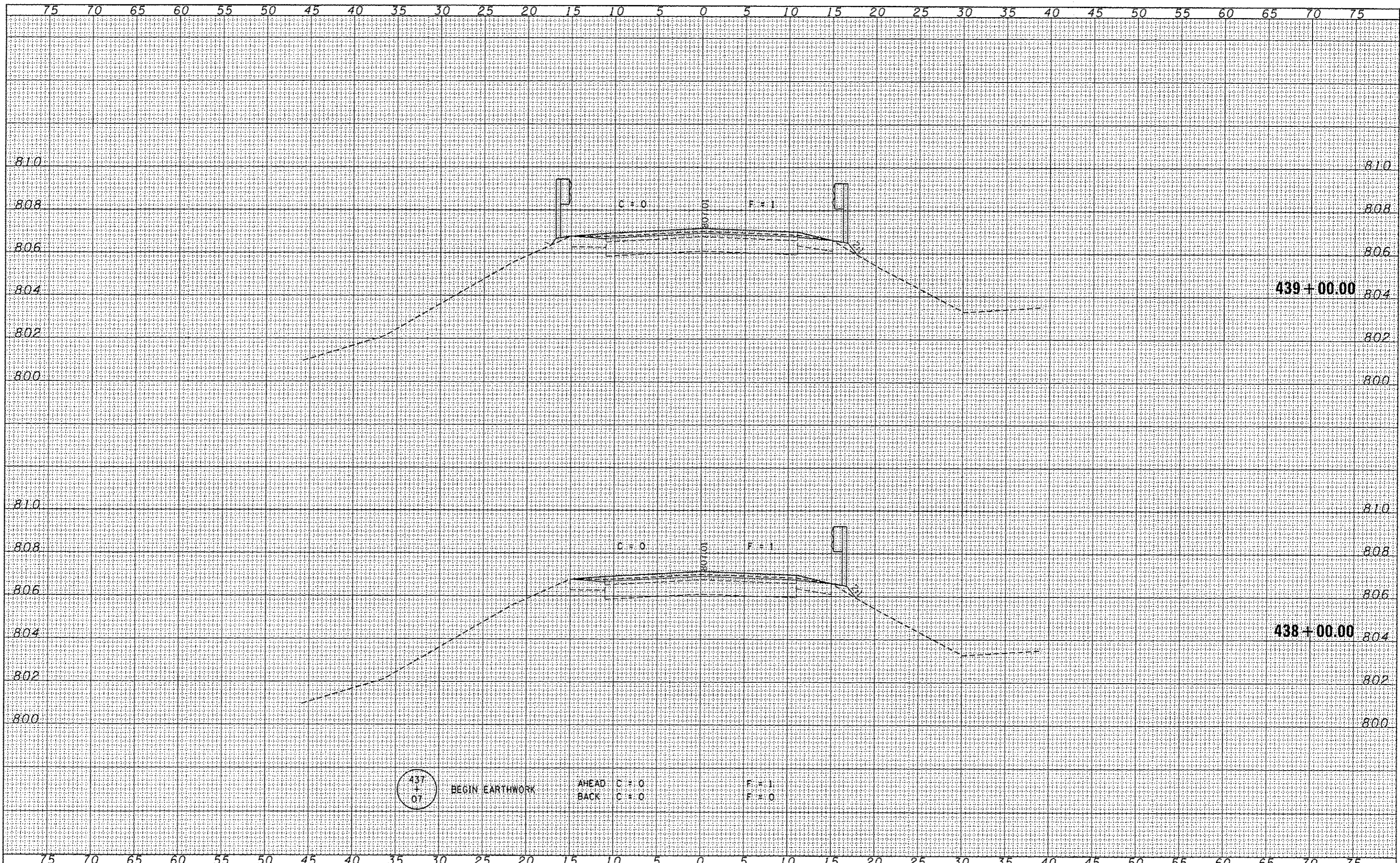


SECTION B-B



SECTION B-B

ENTRANCES						
LOCATION	TYPE	PROPOSED WIDTH	PROPOSED LENGTH	PROPOSED SURFACE	INCIDENTAL HMA SURFACING	AGGREGATE SURFACE COURSE TYPE B
		FEET	FEET		TON	TON
FAS 247/CH21/BRADFORD RD						
LT. STA 426+32	P.E.	16	12	AGG		9
RT. STA 427+02	P.E.	22	12	AGG		12
LT. STA 427+37	CE	30	12	HMA	5	8
LT. STA 428+87	CE	30	12	HMA	5	8
LT. STA 431+21	P.E.	16	12	AGG		9
LT. STA 434+83	P.E.	18	12	AGG		10
RT. STA 443+10	F.E.	16	12	AGG		9
TOTAL					10	65



DATE	
BY	
FINAL SURVEY	
REVISIONS	
DATE	
BY	
NO.	

DATE	
BY	
ORIGINAL SURVEY	
REVISIONS	
DATE	
BY	
NO.	

437
+
07

BEGIN EARTHWORK

AHEAD C: 1:0 F: 1
BACK C: 4:0 F: 0

FILE NAME = 110297-sh1-a.dgn
 DESIGNED - L.F.S.
 DRAWN - D.A.B.
 CHECKED - S.W.M.
 DATE - 03/27/13

USER NAME
 PLOT SCALE
 PLOT DATE = 3/27/2013

DESIGNED - L.F.S.
 DRAWN - D.A.B.
 CHECKED - S.W.M.
 DATE - 03/27/13

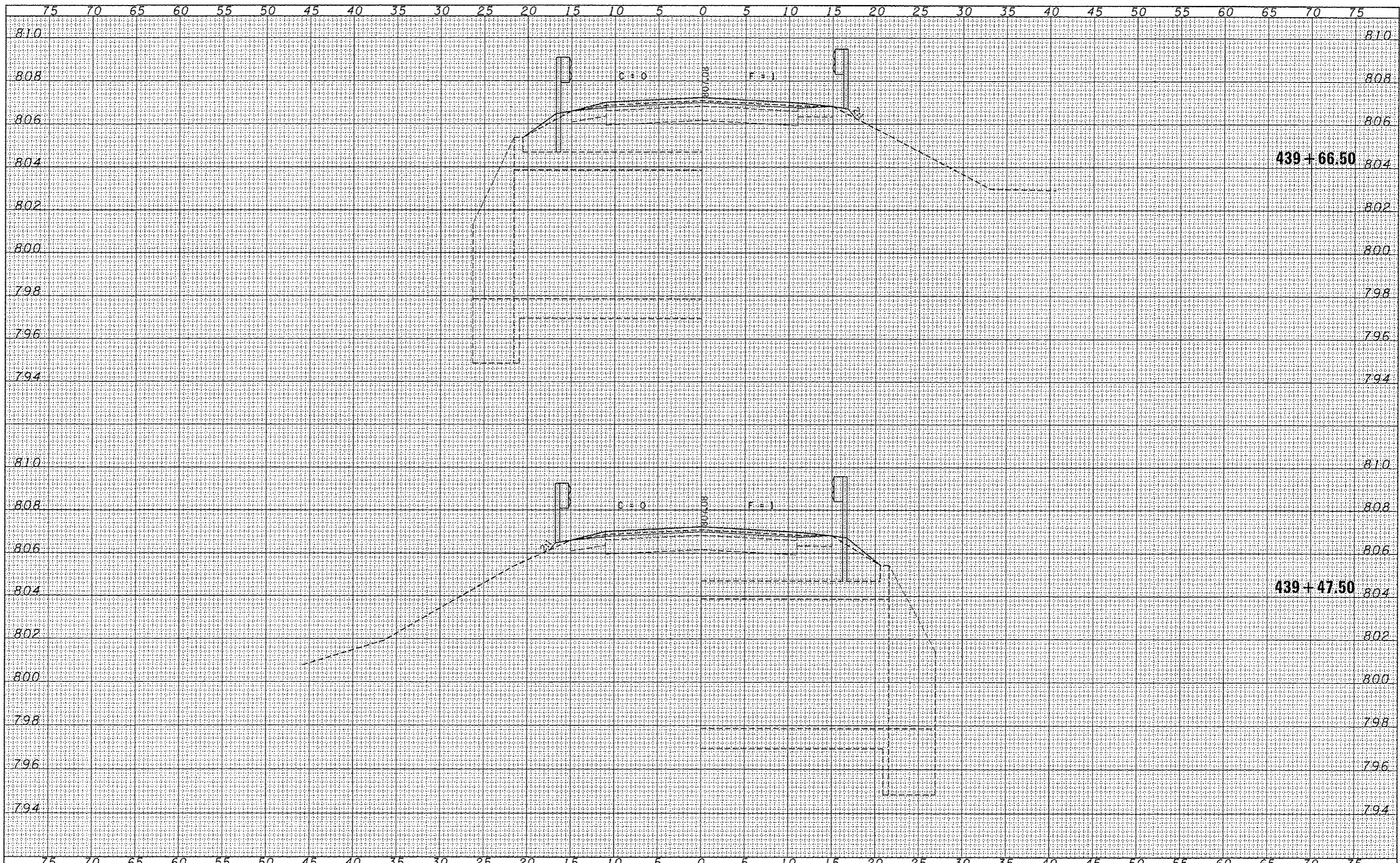
REVISED -
 REVISED -
 REVISED -
 REVISED -

STATE OF ILLINOIS
 DEPARTMENT OF TRANSPORTATION

STATION CROSS SECTIONS
 F.A.S. 247 / C.H. 21 / BRADFORD ROAD

SCALE: 5H:2V SHEET NO. 1 OF 3 SHEETS STA. 438+00.00 TO STA. 439+00.00

FAS	SECTION	COUNTY	TOTAL SHEETS	SHEET NO.
247	09-00164-00-R5	STARK	12	10
CONTRACT NO. 89570				
ILLINOIS FED. AID PROJECT				



DATE	
BY	
REVIEWED	
DESIGNED	
DRAWN	
CHECKED	
DATE	

DATE	
BY	
REVIEWED	
DESIGNED	
DRAWN	
CHECKED	
DATE	

FILE NAME = 110297-ah1-a.dgn	USER NAME =	DESIGNED - L.F.S.	REVISED -
HAMPTON, LENZINI AND RENWICK, INC. 3383 STEVENSON DRIVE, SUITE 201 SPRINGFIELD, ILLINOIS 62764		DRAWN - D.A.B.	REVISED -
		CHECKED - S.W.M.	REVISED -
		DATE - 03/27/13	REVISED -
		PLOT SCALE =	
		FLOT DATE = 3/27/2013	

DESIGNED - L.F.S.	REVISED -
DRAWN - D.A.B.	REVISED -
CHECKED - S.W.M.	REVISED -
DATE - 03/27/13	REVISED -

**STATE OF ILLINOIS
DEPARTMENT OF TRANSPORTATION**

**STATION CROSS SECTIONS
F.A.S. 247 / C.H. 21 / BRADFORD ROAD**

SCALE: 5H:2V SHEET NO. 2 OF 3 SHEETS STA. 439+47.50 TO STA. 439+66.50

FAS	SECTION	COUNTY	TOTAL SHEETS	SHEET NO.
247	09-00164-00-RS	STARK	12	11
CONTRACT NO. 89570			ILLINOIS FED. AID PROJECT	

442
+
06

END EARTHWORK

AHEAD
BACK

C = 0
C = 0

F = 0
F = 1

C = 0

F = 1

441 + 00.00

440 + 00.00

DATE	
BY	
APPROVED	
DATE	
NO.	

DATE	
BY	
APPROVED	
DATE	
NO.	

