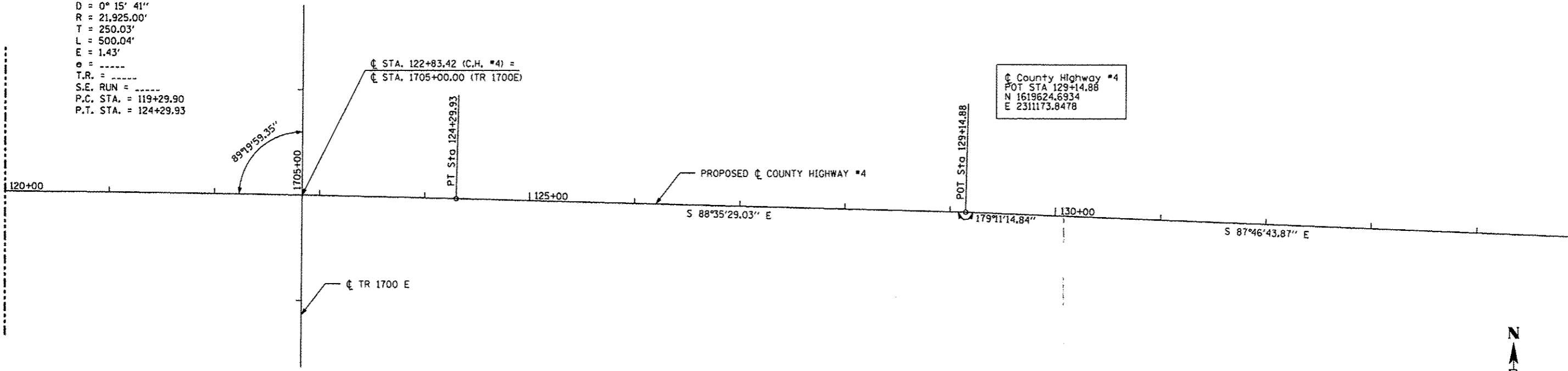


PROP. CURVE PRCH4-2  
 PI STA. = 121+79.92  
 $\Delta = 1^\circ 18' 24''$  (RT)  
 $D = 0^\circ 15' 41''$   
 $R = 21,925.00'$   
 $T = 250.03'$   
 $L = 500.04'$   
 $E = 1.43'$   
 $\phi = \text{-----}$   
 T.R. = -----  
 S.E. RUN = -----  
 P.C. STA. = 119+29.90  
 P.T. STA. = 124+29.93

MATCHLINE STA. 120 + 00.00



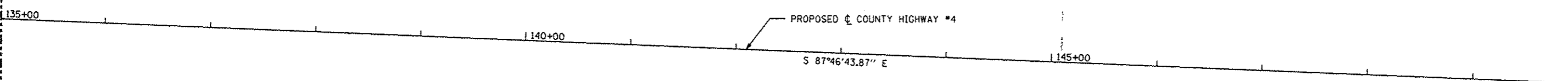
☉ County Highway #4  
 POT STA 129+14.88  
 N 1619624.6934  
 E 2311173.8478

MATCHLINE STA. 135 + 00.00



H. SCALE: 1" = 50'

MATCHLINE STA. 135 + 00.00



MATCHLINE STA. 150 + 00.00



H. SCALE: 1" = 50'

FILE NAME * #FILE#	USER NAME * #USER#	DESIGNED -	REVISED -	<b>STATE OF ILLINOIS DEPARTMENT OF TRANSPORTATION</b>	<b>ROADWAY ALIGNMENT</b>	F.A. RTE.	SECTION	COUNTY	TOTAL SHEETS	SHEET NO.
	PLOT SCALE * #SCALE#	DRAWN -	REVISED -			393	12-00001-01-RS	KNOX	174	27
	PLOT DATE * #DATE#	CHECKED -	REVISED -			COUNTY HIGHWAY #4		CONTRACT NO. 89614		FED. ROAD DIST. NO. 4 [ILLINOIS] FED. AID PROJECT RS-0393 (105)
		DATE - MARCH 2013	REVISED -	SCALE: 1" = 50' SHEET NO. 27 OF 174 SHEETS STA. 120+00.00 TO STA. 150+00.00						