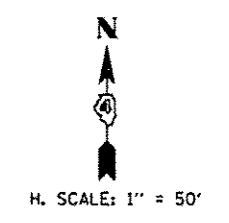
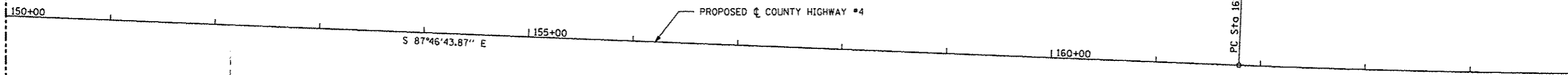


PROP. CURVE PRCH4-3  
 PI STA. = 164+45.42  
 $\Delta$  = 2° 46' 13" (LT)  
 D = 0° 31' 15"  
 R = 11,000.00'  
 T = 265.98'  
 L = 531.87'  
 E = 3.22'  
 e = -----  
 T.R. = -----  
 S.E. RUN = -----  
 P.C. STA. = 161+79.44  
 P.T. STA. = 167+11.30

MATCHLINE STA. 150 + 00.00

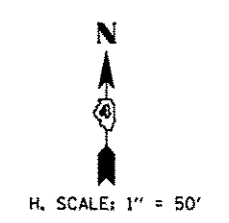
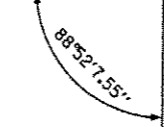
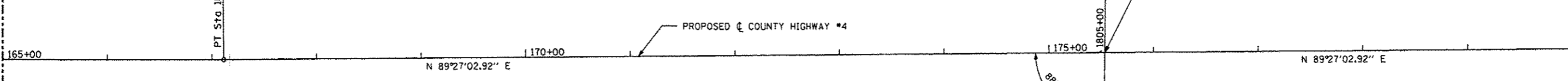
MATCHLINE STA. 165 + 00.00



PROP. CURVE PRCH4-3  
 PI STA. = 164+45.42  
 $\Delta$  = 2° 46' 13" (LT)  
 D = 0° 31' 15"  
 R = 11,000.00'  
 T = 265.98'  
 L = 531.87'  
 E = 3.22'  
 e = -----  
 T.R. = -----  
 S.E. RUN = -----  
 P.C. STA. = 161+79.44  
 P.T. STA. = 167+11.30

MATCHLINE STA. 165 + 00.00

MATCHLINE STA. 180 + 00.00



FILE NAME * #FILE#	USER NAME * USER#	DESIGNED -	REVISED -
		DRAWN -	REVISED -
		CHECKED -	REVISED -
		DATE - MARCH 2013	REVISED -

STATE OF ILLINOIS  
 DEPARTMENT OF TRANSPORTATION

ROADWAY ALIGNMENT  
 SCALE: 1" = 50'  
 SHEET NO. 28 OF 174 SHEETS  
 STA. 150+00.00 TO STA. 180+00.00

F.A. RTE.	SECTION	COUNTY	TOTAL SHEETS	SHEET NO.
393	I2-00001-01-R5	KNDX	174	28
COUNTY HIGHWAY #4		CONTRACT NO. 89614		
FED. ROAD DIST. NO. 4 ILLINOIS FED. AID PROJECT R5-0393 (105)				