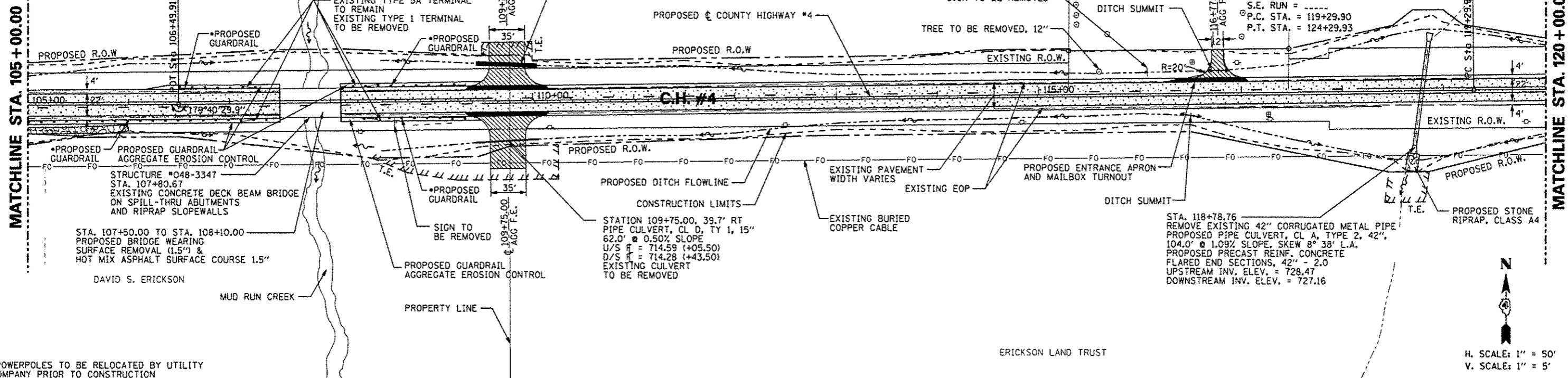


*PROPOSED GUARDRAIL
 TBT, TYPE 1 (SPECIAL) TANGENT STA. 106+50.00 LT TO STA. 107+00.00 LT
 SPBGR TY A, 6 FOOT POSTS STA. 107+00.00 LT TO STA. 107+37.50 LT
 SPBGR TY A, 6 FOOT POSTS STA. 108+22.50 LT TO STA. 108+85.00 LT
 TBT, TYPE 1 (SPECIAL) TANGENT 108+85.00 LT TO STA. 109+35.00 LT
 TBT, TYPE 1 (SPECIAL) TANGENT STA. 104+87.50 RT TO STA. 105+37.50 RT
 SPBGR TY A, 6 FOOT POSTS STA. 105+37.50 RT TO STA. 107+37.50 RT
 SPBGR TY A, 6 FOOT POSTS STA. 108+22.50 RT TO STA. 108+85.00 RT
 TBT, TYPE 1 (SPECIAL) TANGENT 108+85.00 RT TO STA. 109+35.00 RT

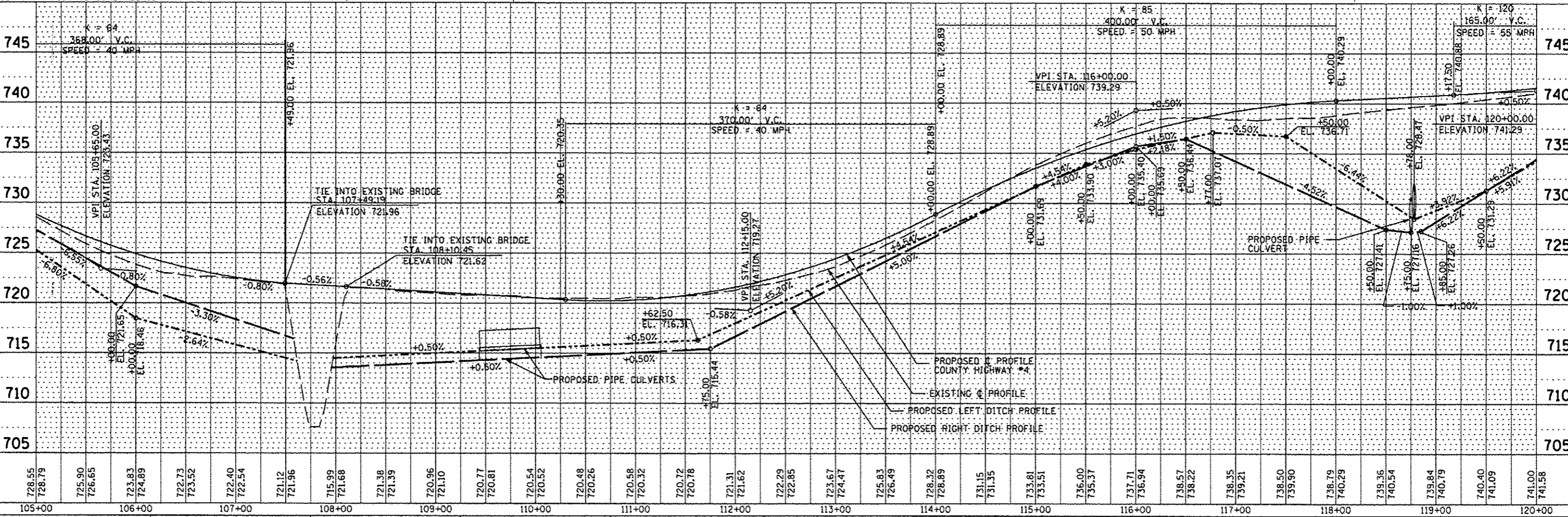
JOHN H SCHLAF

PROP. CURVE PRCH4-2
 PI STA. = 121+79.92
 $\Delta = 1^\circ 18' 24''$ (RT)
 $D = 0^\circ 15' 41''$
 $R = 21,925.00'$
 $T = 250.03'$
 $L = 500.04'$
 $E = 1.43'$
 $\theta = \dots$
 $T.R. = \dots$
 $S.E. RUN = \dots$
 $P.C. STA. = 119+29.90$
 $P.T. STA. = 124+29.93$

JOHN H SCHLAF



*POWERPOLES TO BE RELOCATED BY UTILITY COMPANY PRIOR TO CONSTRUCTION



DATE	
BY	
PLAN	
NO. OF SHEETS	
NO. OF THIS SHEET	
DATE	
BY	
PROFILE	
NO. OF SHEETS	
NO. OF THIS SHEET	
DATE	
BY	

DATE	
BY	
PLAN	
NO. OF SHEETS	
NO. OF THIS SHEET	
DATE	
BY	
PROFILE	
NO. OF SHEETS	
NO. OF THIS SHEET	
DATE	
BY	

STATE OF ILLINOIS
DEPARTMENT OF TRANSPORTATION

COUNTY HIGHWAY #4
PLAN & PROFILE SHEET

FILE NAME	USER NAME * USER#	DESIGNED - AMH	REVISED -
#FILE#		DRAWN - AMH	REVISED -
		CHECKED - JLH	REVISED -
		DATE - MARCH 2013	REVISED -

SCALE: 1"=50'	SHEET NO. 37 OF 174 SHEETS	STA. 105+00.00 TO STA. 120+00.00
---------------	----------------------------	----------------------------------

F.A.S. RTE.	SECTION	COUNTY	TOTAL SHEETS	SHEET NO.
393	12-00001-01-RS	KNOX	174	37
COUNTY HIGHWAY #4		CONTRACT NO. 89614		
FED ROAD DIST NO. 4		ILLINOIS FED. AID PROJECT RS-0393 (025)		