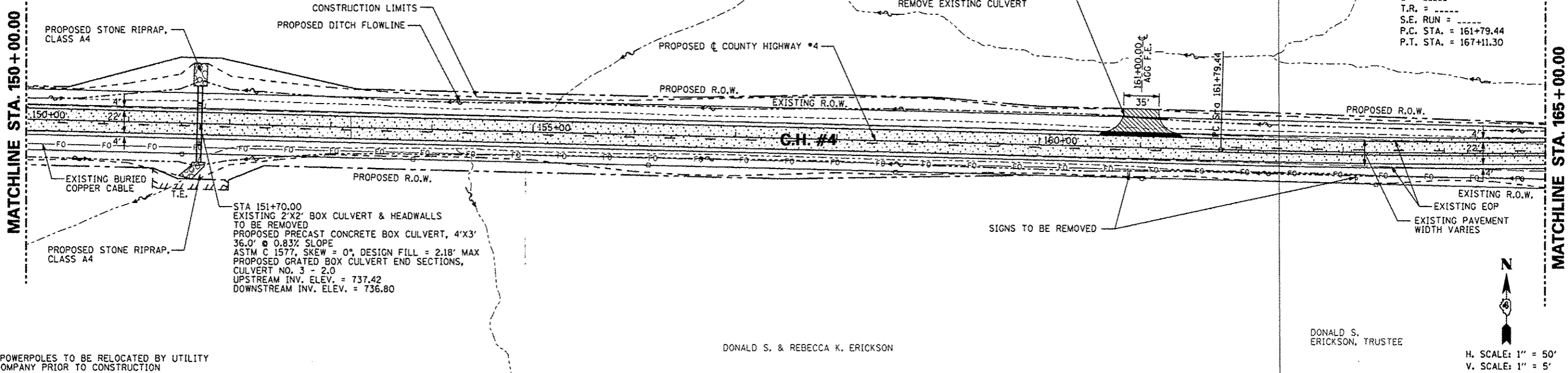


BARBARA E. & ALFRED O. PAULUS

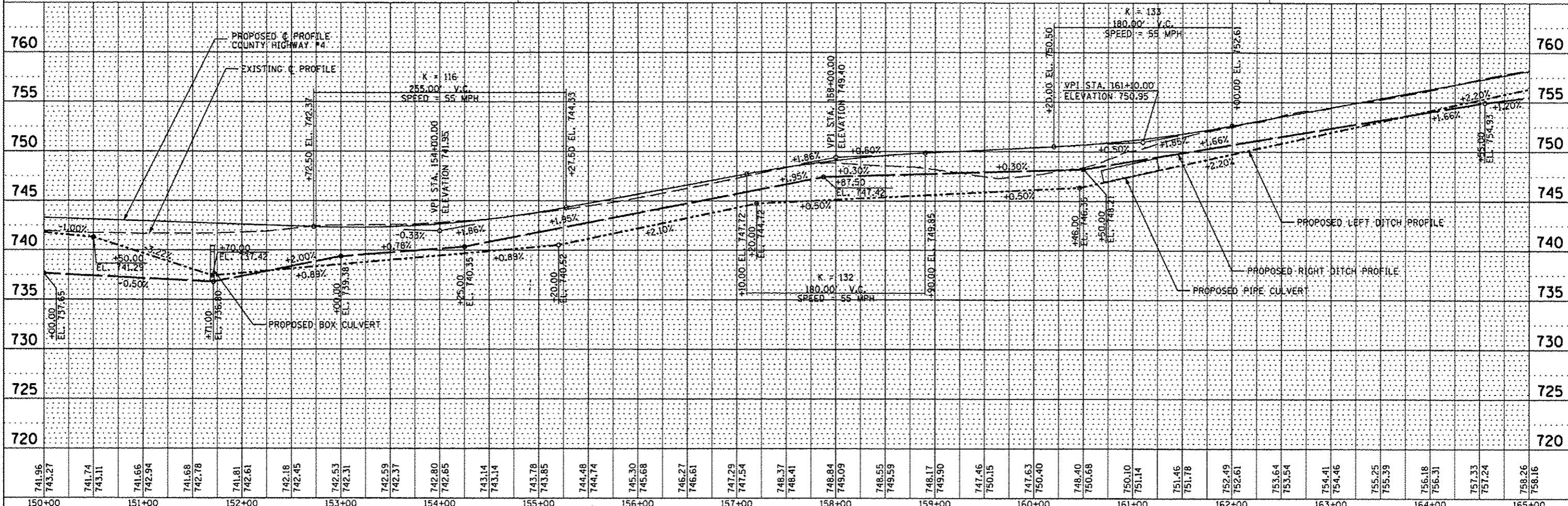
GRACE E. EDWARDS

PROP. CURVE PRCH4-3
 PI STA. = 164+45.42
 $\Delta = 2^\circ 46' 13''$ (LT)
 $D = 0^\circ 31' 15''$
 $R = 11,000.00'$
 $T = 265.98'$
 $L = 531.87'$
 $E = 3.22'$
 $e = \dots$
 $T.R. = \dots$
 $S.E. RUN = \dots$
 $P.C. STA. = 161+79.44$
 $P.T. STA. = 167+11.30$

STATION 161+00.00, 29.5' LT
 PIPE CULVERT, CL D, TY 1, 15"
 56.0' @ 2.20% SLOPE
 $U/S \# = 748.12 (+26.50)$
 $D/S \# = 746.89 (+70.50)$
 REMOVE EXISTING CULVERT



*POWERPOLES TO BE RELOCATED BY UTILITY COMPANY PRIOR TO CONSTRUCTION



741.96	743.27	741.74	743.11	741.66	742.94	741.68	742.78	741.81	742.61	742.18	742.45	742.53	742.31	742.59	742.37	742.80	742.65	743.14	743.14	743.78	743.85	744.48	744.74	745.30	745.68	746.27	746.61	747.29	747.54	748.37	748.41	748.84	749.09	748.55	749.59	748.17	749.90	747.46	750.15	747.63	750.40	748.40	750.68	750.10	751.14	751.46	751.78	752.49	752.61	753.64	753.54	754.41	754.46	755.25	755.39	756.18	756.31	757.33	757.24	758.26	758.16
150+00	151+00	152+00	153+00	154+00	155+00	156+00	157+00	158+00	159+00	160+00	161+00	162+00	163+00	164+00	165+00																																														

DATE	
BY	
PLAN	
REVISED	
DATE	
BY	
NOTE BOOK	
NO.	

DATE	
BY	
PROFILE	
REVISED	
DATE	
BY	
NOTE BOOK	
NO.	

STATE OF ILLINOIS
 DEPARTMENT OF TRANSPORTATION

COUNTY HIGHWAY #4
 PLAN & PROFILE SHEET

F.A.S. RTE.	SECTION	COUNTY	TOTAL SHEETS	SHEET NO.
393	12-00001-01-RS	KNOX	174	40
COUNTY HIGHWAY #4		CONTRACT NO. 89614		
FED ROAD DIST NO. 4		ILLINOIS FED. AID PROJECT RS-0393 (105)		

SCALE: 1"=50' SHEET NO. 40 OF 174 SHEETS STA. 150+00.00 TO STA. 165+00.00

FILE NAME *	USER NAME * USER*	DESIGNED - AMH	REVISED -
#FILE#		DRAWN - AMH	REVISED -
		CHECKED - JLH	REVISED -
		DATE - MARCH 2013	REVISED -