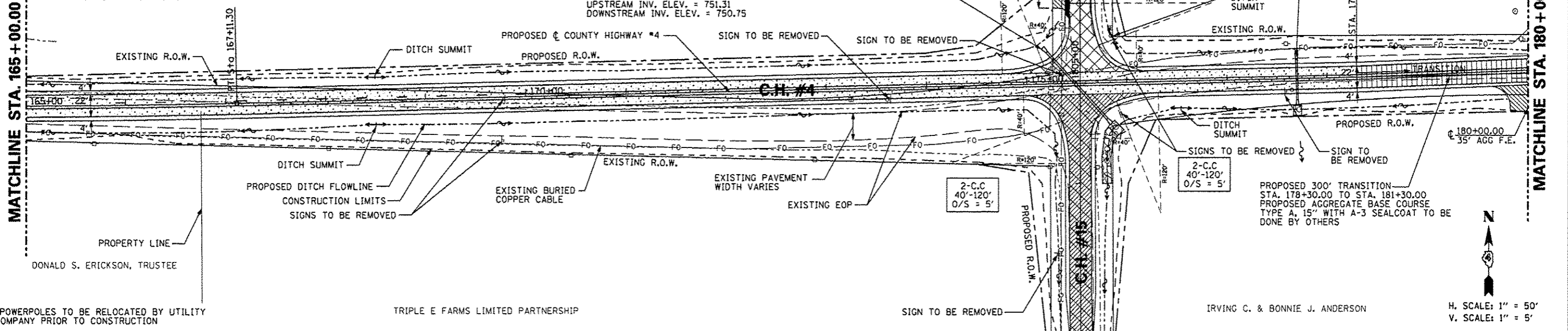


PROP. CURVE PRCH4-3  
 PI STA. = 164+45.42  
 $\Delta = 2^{\circ} 46' 13''$  (LT)  
 $D = 0^{\circ} 31' 15''$   
 $R = 11,000.00'$   
 $T = 265.98'$   
 $L = 531.87'$   
 $E = 3.22'$   
 $e =$   
 $T.R. =$   
 $S.E. RUN =$   
 P.C. STA. = 161+79.44  
 P.T. STA. = 167+11.30

GRACE E. EDWARDS

WILLIS E. & ANN LARSON

STA 177+70.00  
 REMOVE EXISTING 18" CLAY PIPE & HEADWALLS  
 PROPOSED PIPE CULVERT, CL. A, TY 1, 18"  
 40.0' @ 0.59% SLOPE  
 PROPOSED PRECAST REINF. CONC.  
 FLARED END SECTIONS, 18" - 2.0  
 UPSTREAM INV. ELEV. = 751.81  
 DOWNSTREAM INV. ELEV. = 751.50



\*POWERPOLES TO BE RELOCATED BY UTILITY COMPANY PRIOR TO CONSTRUCTION

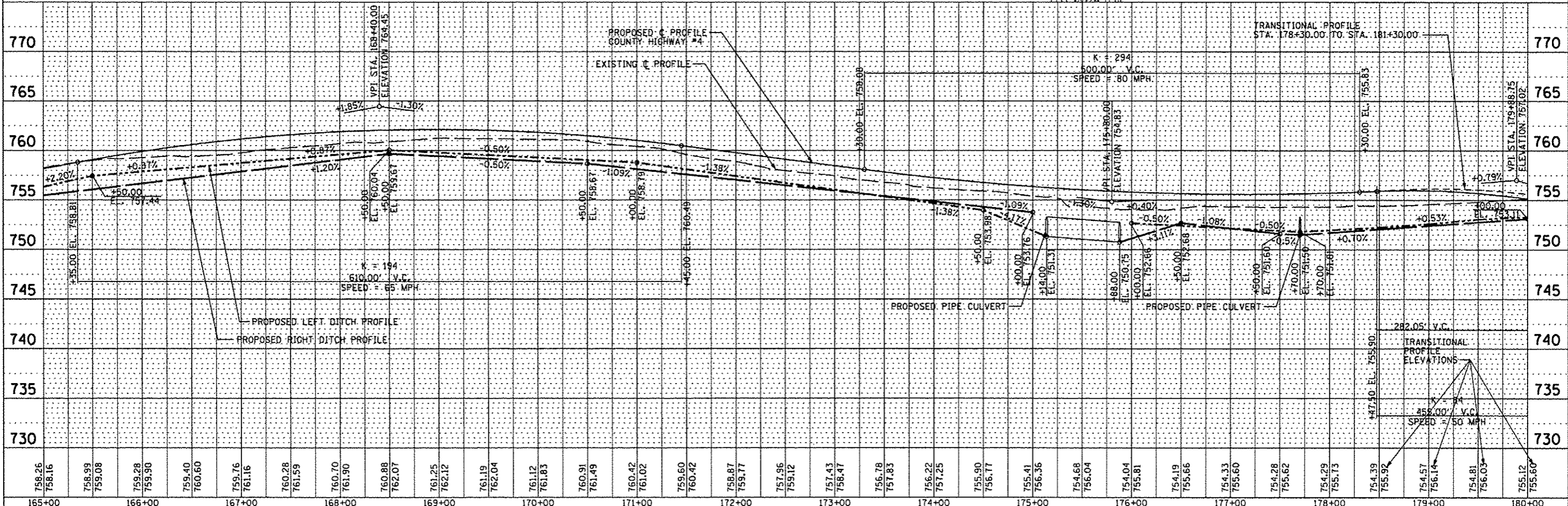
TRIPLE E FARMS LIMITED PARTNERSHIP

IRVING C. & BONNIE J. ANDERSON

H. SCALE: 1" = 50'  
 V. SCALE: 1" = 5'

DATE	
BY	
REVISED	
PLANNING	
DESIGNED	
CHECKED	
NO. 1	
NO. 2	
NO. 3	
NO. 4	
NO. 5	
NO. 6	
NO. 7	
NO. 8	
NO. 9	
NO. 10	

DATE	
BY	
REVISED	
PLANNING	
DESIGNED	
CHECKED	
NO. 1	
NO. 2	
NO. 3	
NO. 4	
NO. 5	
NO. 6	
NO. 7	
NO. 8	
NO. 9	
NO. 10	



FILE NAME				USER NAME				DESIGNED - AMH		REVISED -		DRAWN - AMH		REVISED -		CHECKED - JLH		REVISED -		DATE - MARCH 2013				REVISED -	
STATE OF ILLINOIS				DEPARTMENT OF TRANSPORTATION				COUNTY HIGHWAY #4		PLAN & PROFILE SHEET		SCALE: 1"=50'		SHEET NO. 41 OF 174 SHEETS		STA. 165+00.00 TO STA. 180+00.00		CONTRACT NO. 89614				ILLINOIS FED. AID PROJECT RS-0393 (105)			