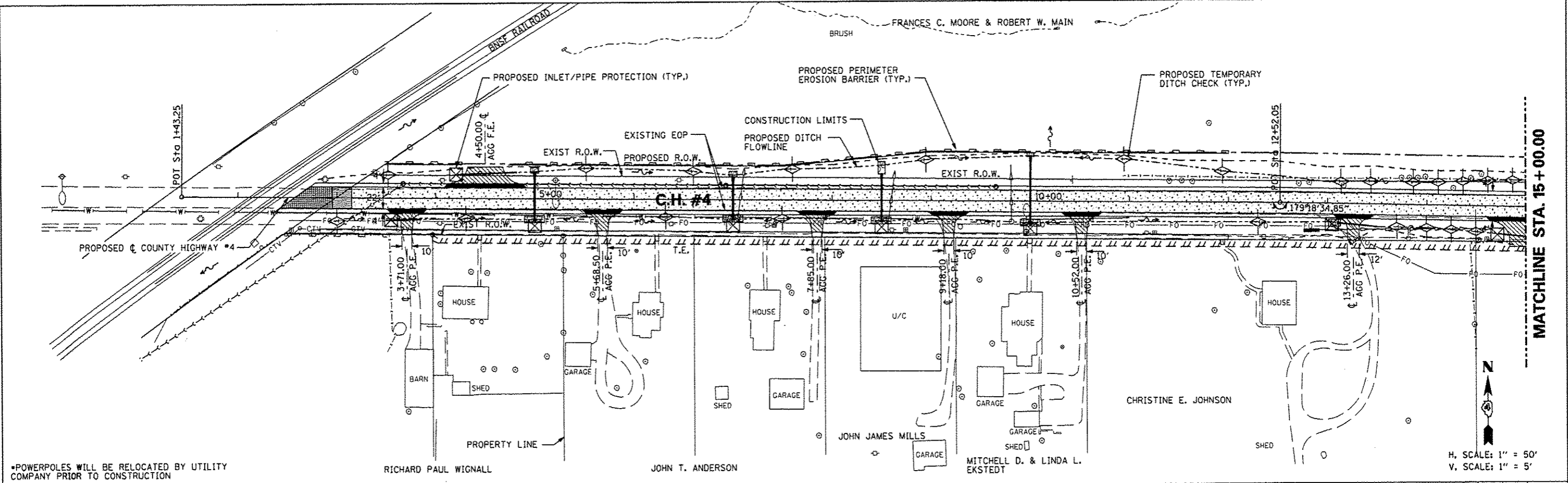
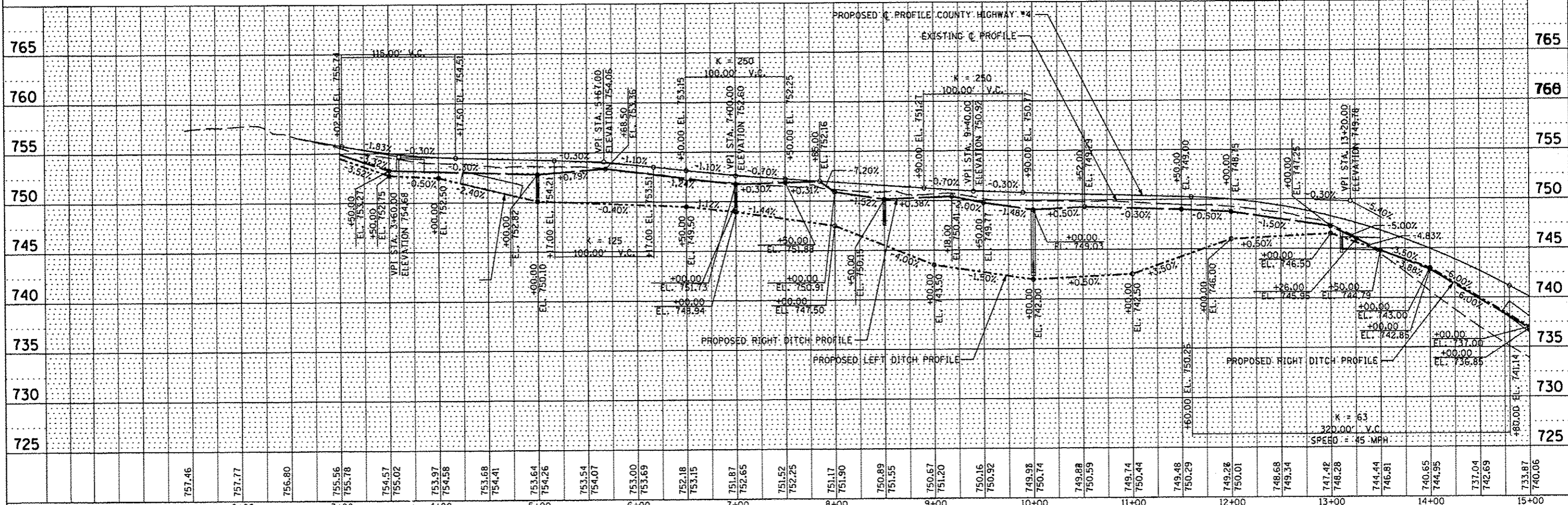


DATE	
BY	
REVISIONS	
NO. DATE	
PLAN	
NO. DATE	
NO. DATE	
NO. DATE	

DATE	
BY	
REVISIONS	
NO. DATE	
PROFILE	
NO. DATE	
NO. DATE	
NO. DATE	



*POWERPOLES WILL BE RELOCATED BY UTILITY COMPANY PRIOR TO CONSTRUCTION



FILE NAME *	USER NAME * USER*	DESIGNED - AMH	REVISED -	STATE OF ILLINOIS DEPARTMENT OF TRANSPORTATION	COUNTY HIGHWAY #4 EROSION AND SEDIMENT CONTROL PLAN	F.A.S. RTE.	SECTION	COUNTY	TOTAL SHEET NO.	
#FILE#		DRAWN - AMH	REVISED -			393	12-0001-01-R5	KNOX	174	46
PLOT SCALE * SCALE*		CHECKED - JLH	REVISED -			COUNTY HIGHWAY #4				CONTRACT NO. 89614
PLOT DATE * DATE*		DATE - MARCH 2013	REVISED -			FED ROAD DIST NO. 4				ILLINOIS FED. AID PROJECT RS-0393 (105)