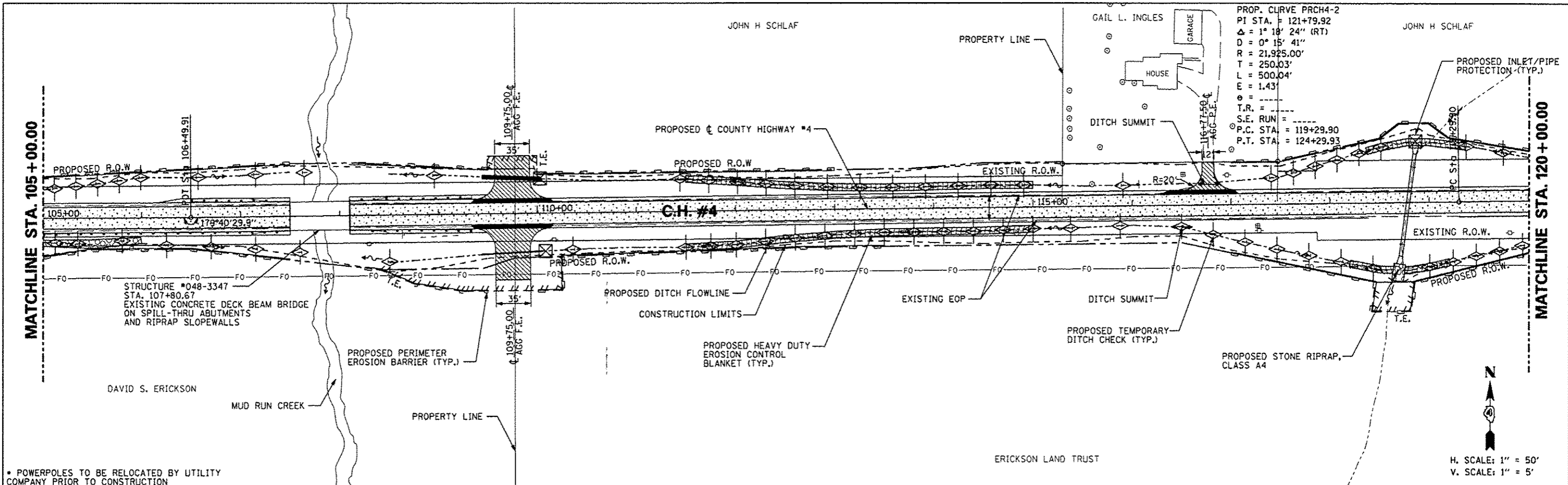


DATE	
BY	
REVISION	
NO.	
DESCRIPTION	
DATE	
BY	
REVISION	
NO.	
DESCRIPTION	
DATE	
BY	
REVISION	
NO.	
DESCRIPTION	

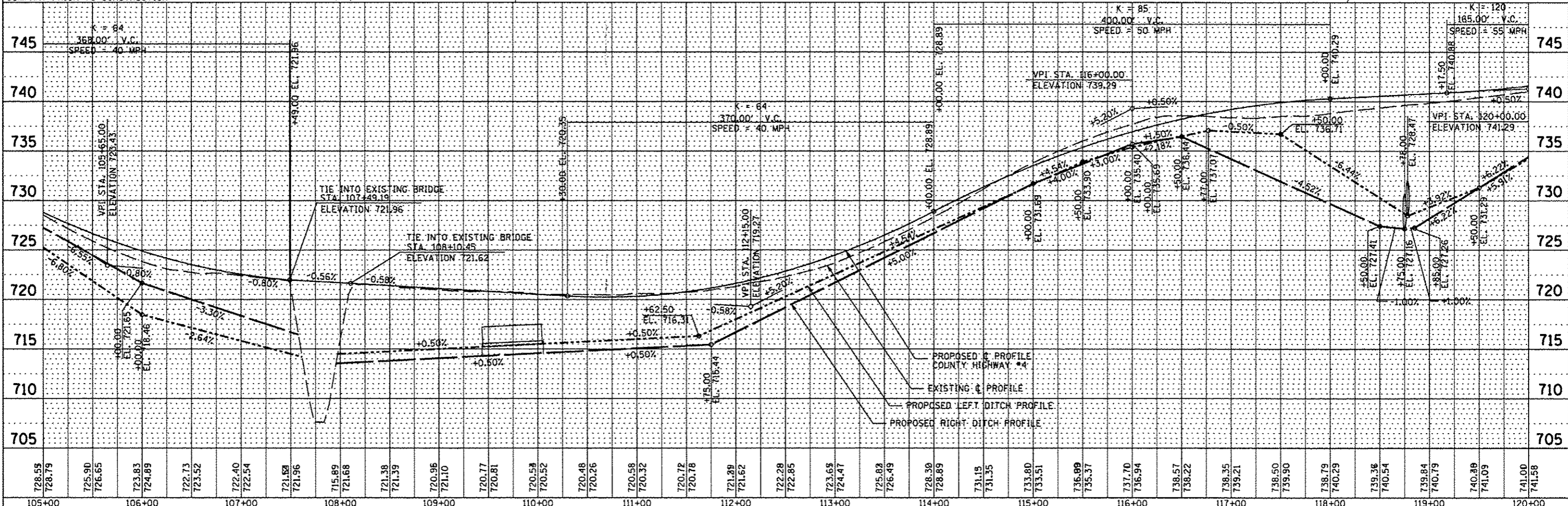
DATE	
BY	
REVISION	
NO.	
DESCRIPTION	
DATE	
BY	
REVISION	
NO.	
DESCRIPTION	



PROP. CURVE PRCH4-2  
 PI STA. = 121+79.92  
 $\Delta = 1^\circ 18' 24''$  (RT)  
 $D = 0^\circ 15' 41''$   
 $R = 21,925.00'$   
 $T = 250.03'$   
 $L = 500.04'$   
 $E = 1.43'$   
 $\theta = \dots$   
 $T.R. = \dots$   
 $S.E. RUN = \dots$   
 $P.C. STA. = 119+29.90$   
 $P.T. STA. = 124+29.93$

\* POWERPOLES TO BE RELOCATED BY UTILITY COMPANY PRIOR TO CONSTRUCTION

H. SCALE: 1" = 50'  
 V. SCALE: 1" = 5'



FILE NAME	USER NAME * USER *	DESIGNED - AMH	REVISED -	<b>STATE OF ILLINOIS</b> <b>DEPARTMENT OF TRANSPORTATION</b>	<b>COUNTY HIGHWAY #4</b> <b>EROSION AND SEDIMENT CONTROL PLAN</b>	F.A.S. RTE.	SECTION	COUNTY	TOTAL SHEET NO.	
*FILE#*	PLOT SCALE * SCALE*	DRAWN - AMH	REVISED -			393	12-00001-01-RS	KNOX	174	53
	PLOT DATE * DATE*	CHECKED - JLH	REVISED -			COUNTY HIGHWAY #4		CONTRACT NO. 89614		
		DATE - MARCH 2013	REVISED -			FED ROAD DIST NO. 4		ILLINOIS FED. AID PROJECT RS-0393 (09)		