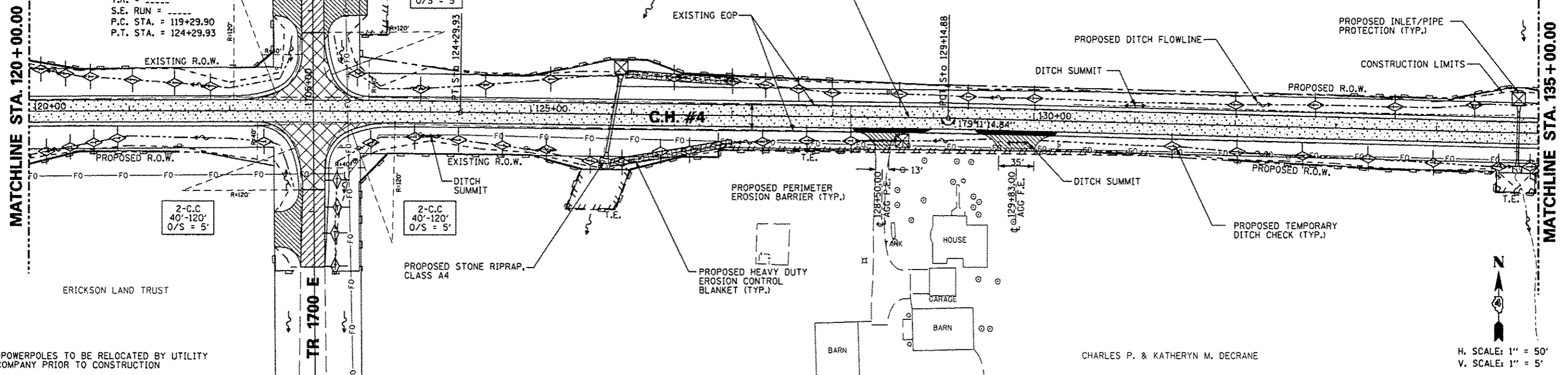


JOHN H. SCHLAF
 PROP. CURVE PRCH4-2
 PI STA. = 121+79.92
 $\Delta = 1^\circ 18' 24''$ (RT)
 $D = 0^\circ 15' 41''$
 $R = 21,925.00'$
 $T = 250.03'$
 $L = 500.04'$
 $E = 1.43'$
 $\theta = \dots$
 T.R. = \dots
 S.E. RUN = \dots
 P.C. STA. = 119+29.90
 P.T. STA. = 124+29.93

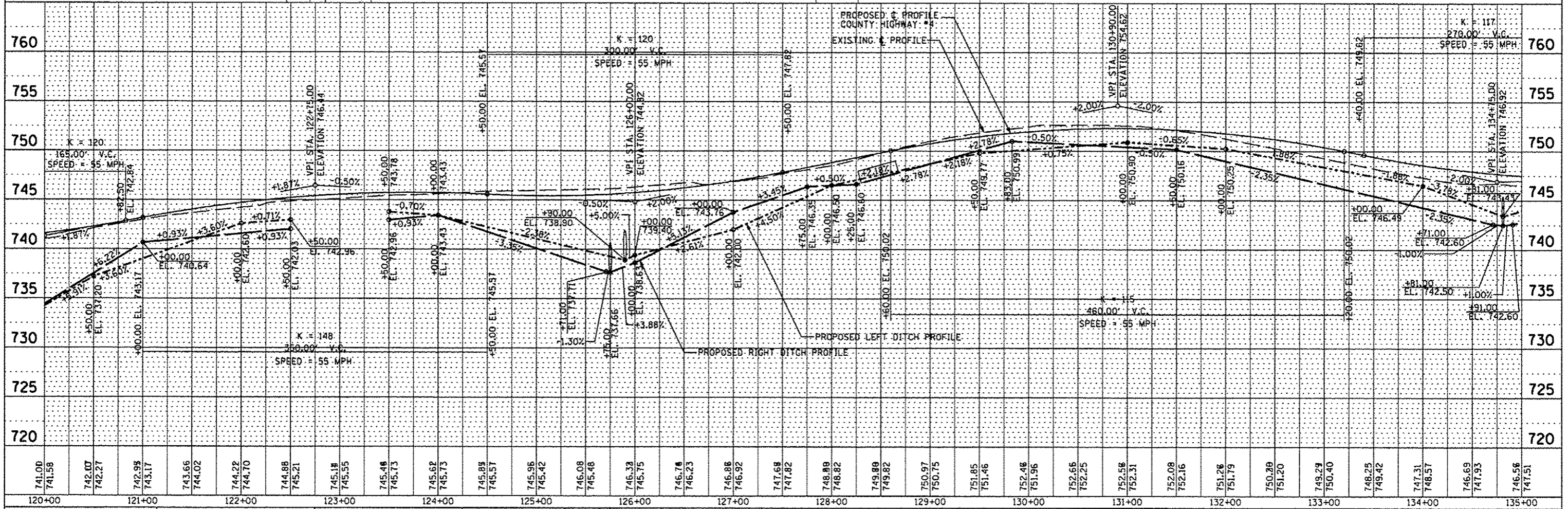
EDWARD E. & PATSY J.
 EKSTEDT, TRUSTEE



*POWERPOLES TO BE RELOCATED BY UTILITY COMPANY PRIOR TO CONSTRUCTION

CHARLES P. & KATHERYN M. DECRANE

H. SCALE: 1" = 50'
 V. SCALE: 1" = 5'



DATE	
BY	
PLAN	
NO.	
NOTE BOOK	
NO.	
DATE	
BY	
PROFILE	
NO.	
NOTE BOOK	
NO.	
DATE	
BY	

DATE	
BY	
PROFILE	
NO.	
NOTE BOOK	
NO.	
DATE	
BY	

FILE NAME	USER NAME	DESIGNED	REVISED	STATE OF ILLINOIS DEPARTMENT OF TRANSPORTATION				COUNTY HIGHWAY #4 EROSION AND SEDIMENT CONTROL PLAN				F.A.S. RTE.	SECTION	COUNTY	TOTAL SHEETS	SHEET NO.	
#FILE#	#USER#	AMH										393	12-00001-01-RS	KNOX	174	54	
		AMH										COUNTY HIGHWAY #4		CONTRACT NO. 89614			
		JLH										FED ROAD DIST NO. 4		ILLINOIS FED. AID PROJECT RS-0393 11051			
		MARCH 2013										SCALE: 1"=50'		SHEET NO. 54 OF 174 SHEETS		STA. 120+00.00 TO STA. 135+00.00	