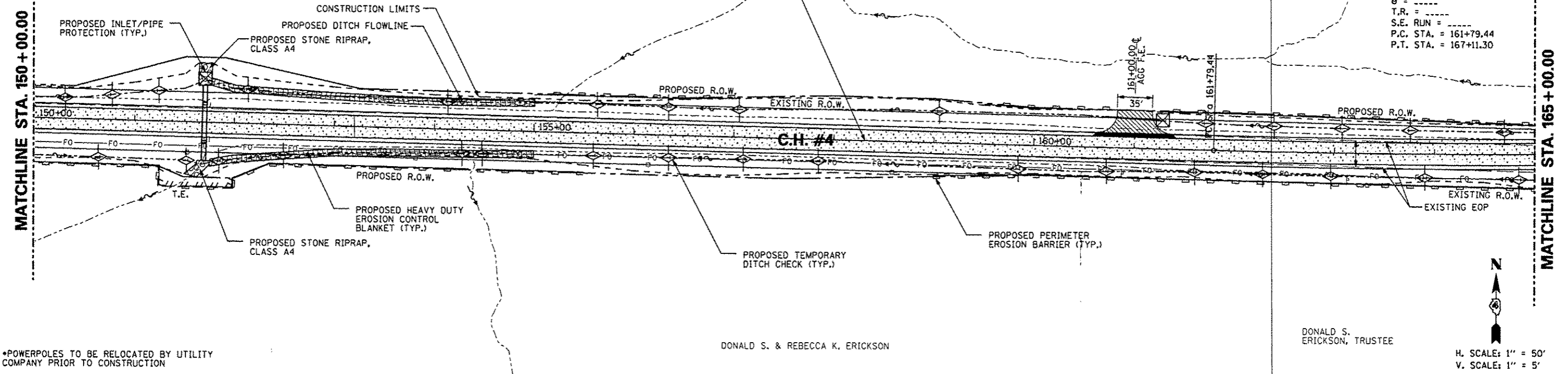


BARBARA E. & ALFRED O. PAULUS

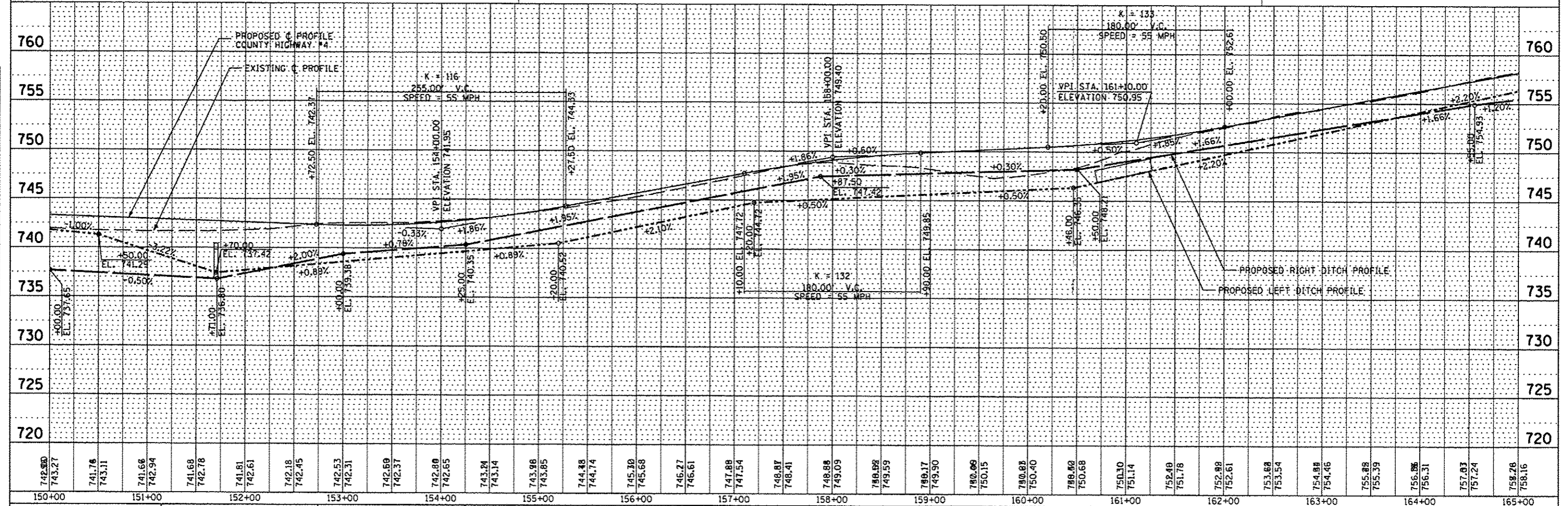
GRACE E. EDWARDS

PROP. CURVE PRCH4-3
 PI STA. = 164+45.42
 $\Delta = 2^\circ 46' 13''$ (LT)
 $D = 0^\circ 31' 15''$
 $R = 11,000.00'$
 $L = 531.87'$
 $E = 3.22'$
 $\theta = \text{---}$
 $T.R. = \text{---}$
 $S.E. \text{ RUN} = \text{---}$
 $P.C. \text{ STA.} = 161+79.44$
 $P.T. \text{ STA.} = 167+11.30$

DATE	
BY	
REVISION	
PLANNED	
ALIGNED	
CHECKED	
NO. 1	
NO. 2	
NO. 3	
NO. 4	
NO. 5	
NO. 6	
NO. 7	
NO. 8	
NO. 9	
NO. 10	



DATE	
BY	
REVISION	
PLANNED	
ALIGNED	
CHECKED	
NO. 1	
NO. 2	
NO. 3	
NO. 4	
NO. 5	
NO. 6	
NO. 7	
NO. 8	
NO. 9	
NO. 10	



FILE NAME	USER NAME * USER *	DESIGNED - AMH	REVISED -	STATE OF ILLINOIS DEPARTMENT OF TRANSPORTATION	COUNTY HIGHWAY #4 EROSION AND SEDIMENT CONTROL PLAN	F.A.S. RTE.	SECTION	COUNTY	TOTAL SHEETS	SHEET NO.
*FILE#		DRAWN - AMH	REVISED -			393	12-00001-01-RS	KNOX	174	56
PLOT SCALE * SCALE#		CHECKED - JLH	REVISED -			COUNTY HIGHWAY #4		CONTRACT NO. 89614		
PLOT DATE * DATE#		DATE - MARCH 2013	REVISED -			SCALE: 1"=50'		SHEET NO. 56 OF 174 SHEETS		STA. 150+00.00 TO STA. 165+00.00
						FED ROAD DIST NO. 4		ILLINOIS FED. AID PROJECT		RS-0393 (105)