

PROP. CURVE PRCH4-3
 PI STA. = 164+45.42
 $\Delta = 2^\circ 46' 13''$ (LT)
 $D = 0^\circ 31' 15''$
 $R = 11,000.00'$
 $T = 265.98'$
 $L = 531.87'$
 $E = 3.22'$
 $\theta = \dots$
 T.R. = \dots
 S.E. RUN = \dots
 P.C. STA. = 161+79.44
 P.T. STA. = 167+11.30

GRACE E. EDWARDS

WILLIS E. & ANN LARSON

2-C.C.
 40'-120'
 O/S = 5'

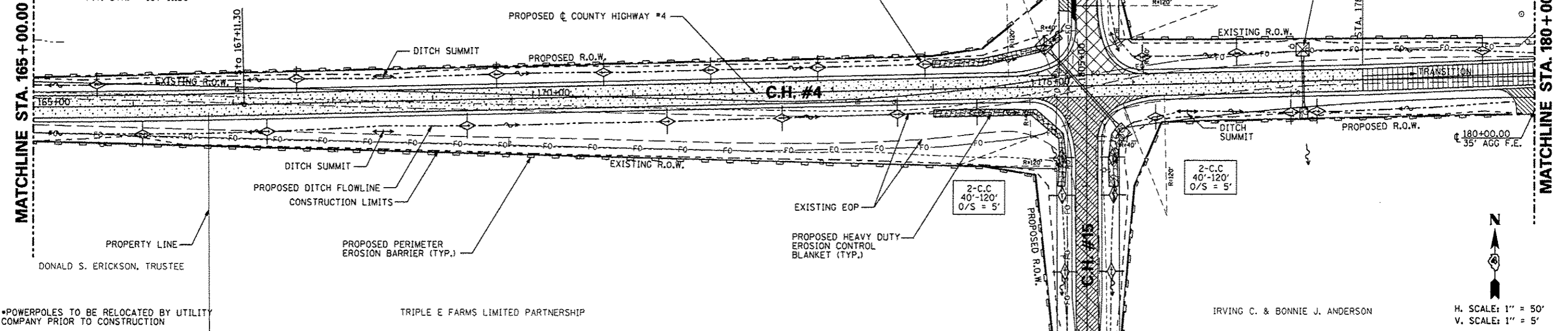
2-C.C.
 40'-120'
 O/S = 5'

2-C.C.
 40'-120'
 O/S = 5'

2-C.C.
 40'-120'
 O/S = 5'

DATE	
BY	
REVISIONS	
NO.	
DESCRIPTION	
DATE	
BY	
DATE	
BY	
DATE	

DATE	
BY	
REVISIONS	
NO.	
DESCRIPTION	
DATE	
BY	
DATE	
BY	
DATE	

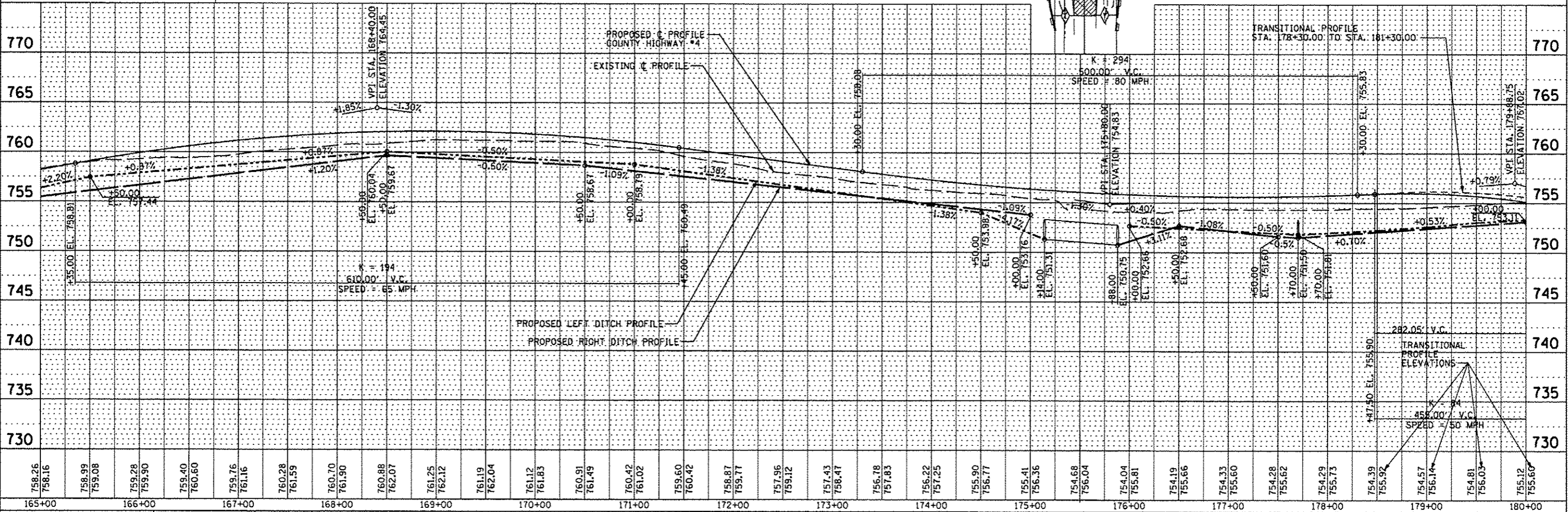


*POWERPOLES TO BE RELOCATED BY UTILITY COMPANY PRIOR TO CONSTRUCTION

TRIPLE E FARMS LIMITED PARTNERSHIP

IRVING C. & BONNIE J. ANDERSON

H. SCALE: 1" = 50'
 V. SCALE: 1" = 5'



FILE NAME	USER NAME	DESIGNED	REVISED	STATE OF ILLINOIS DEPARTMENT OF TRANSPORTATION	COUNTY HIGHWAY #4 EROSION AND SEDIMENT CONTROL PLAN	F.A.S. RTE.	SECTION	COUNTY	TOTAL SHEETS	SHEET NO.	
#FILE#		AMH				393	12-00001-01-RS	KNOX	174	57	
PLOT SCALE	#SCALE#	CHECKED	REVISED			COUNTY HIGHWAY #4		CONTRACT NO. 89614			
PLOT DATE	#DATE#	DATE	REVISED			SCALE: 1"=50'		SHEET NO. 57 OF 174 SHEETS		STA. 165+00.00 TO STA. 180+00.00	