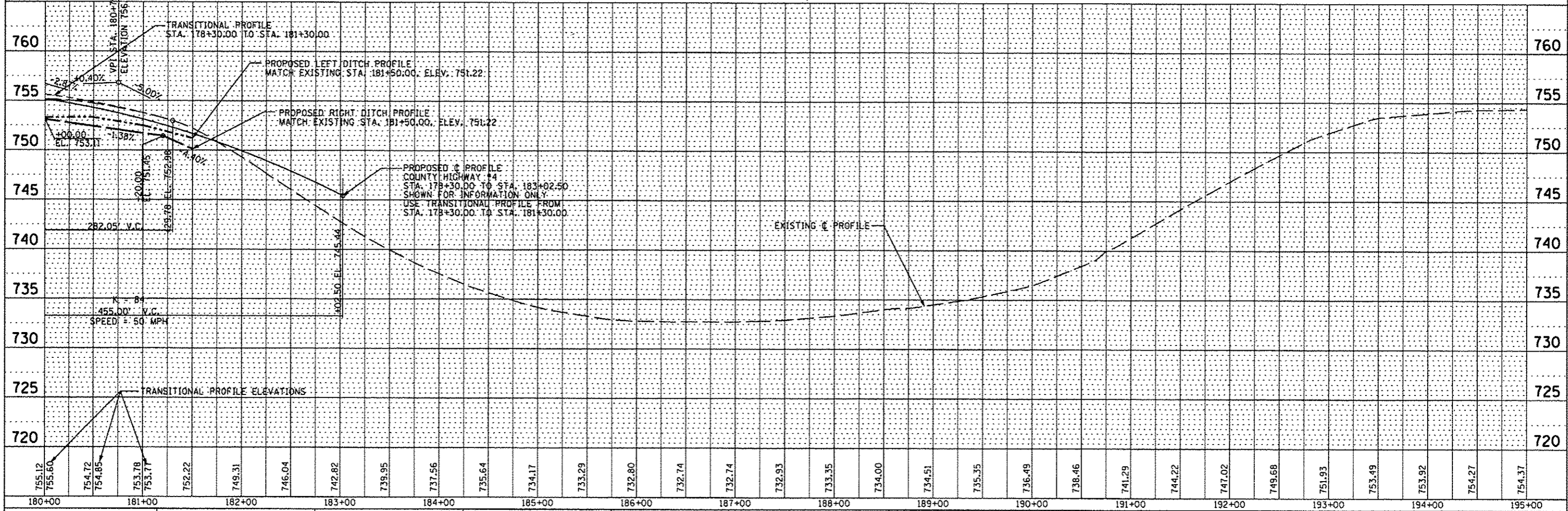
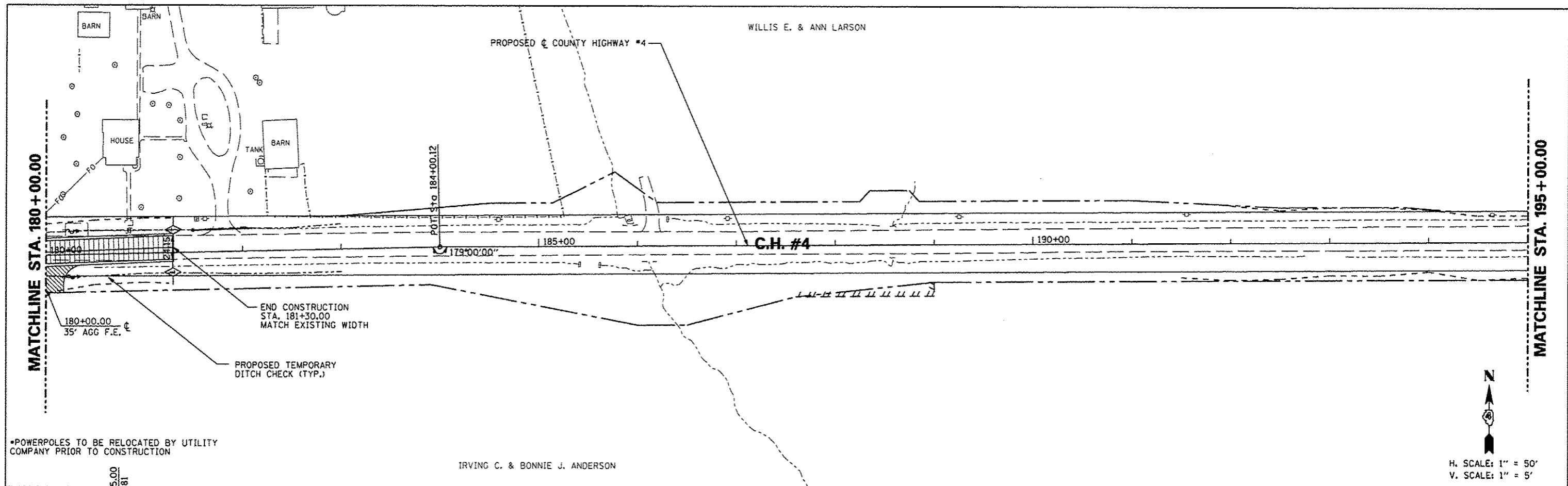


| | |
|-----------|--|
| DATE | |
| BY | |
| DESIGNED | |
| PLANNED | |
| ALIGNED | |
| CHECKED | |
| NOTE BOOK | |
| NO. | |

| | |
|-----------|--|
| DATE | |
| BY | |
| DESIGNED | |
| PLANNED | |
| CHECKED | |
| NOTE BOOK | |
| NO. | |



| | | | | | | | | | | |
|---------------------|--------------------|-------------------|-----------|---|--|---------------------|----------------|---|--------------|-----------|
| FILE NAME | USER NAME * USER * | DESIGNED - AMH | REVISED - | STATE OF ILLINOIS DEPARTMENT OF TRANSPORTATION | COUNTY HIGHWAY #4 EROSION AND SEDIMENT CONTROL PLAN | F.A.S. RTE. | SECTION | COUNTY | TOTAL SHEETS | SHEET NO. |
| *FILE# | | DRAWN - AMH | REVISED - | | | 393 | 12-00001-01-RS | KNOX | 174 | 58 |
| PLOT SCALE * SCALE* | | CHECKED - JLH | REVISED - | | | COUNTY HIGHWAY #4 | | CONTRACT NO. 89614 | | |
| PLOT DATE * DATE* | | DATE - MARCH 2013 | REVISED - | | | FED ROAD DIST NO. 4 | | ILLINOIS FED. AID PROJECT RS-0393 (105) | | |