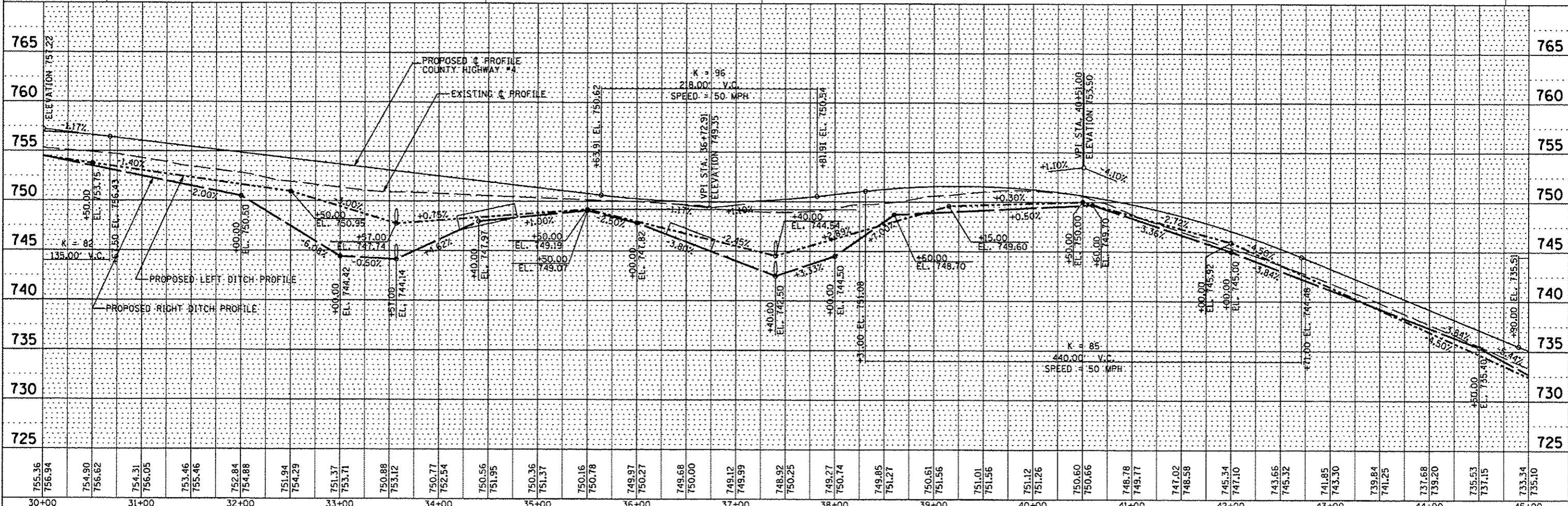
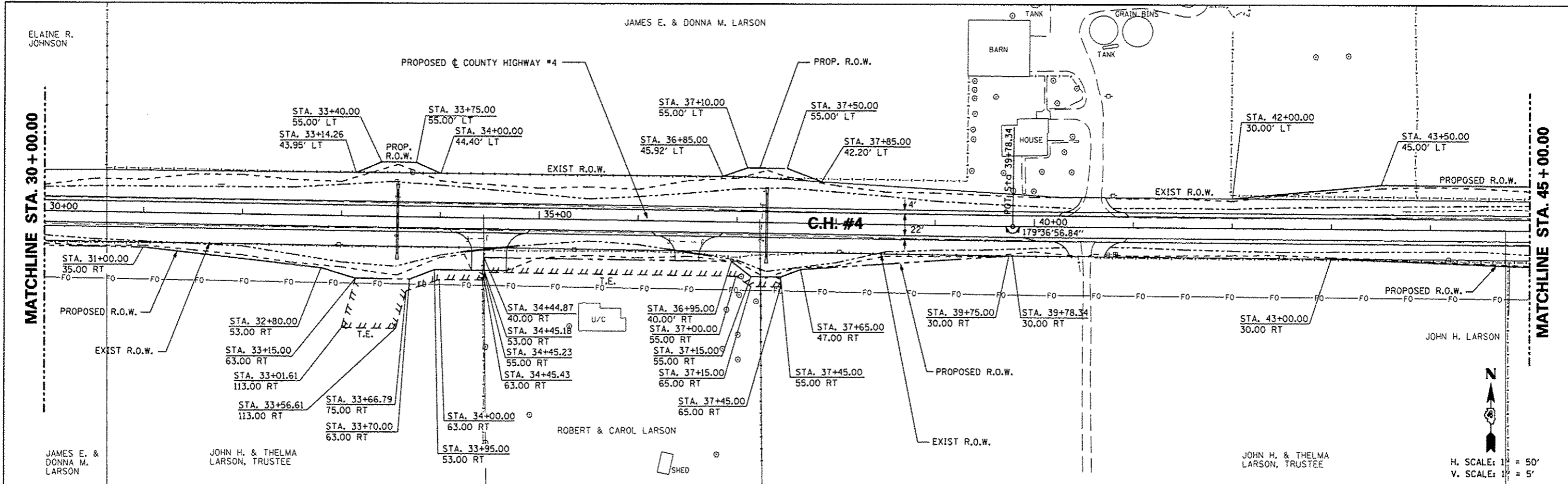


DATE	
BY	
REVISIONS	
NO.	
DATE	
BY	
REVISIONS	
NO.	
DATE	
BY	
REVISIONS	
NO.	

DATE	
BY	
REVISIONS	
NO.	
DATE	
BY	
REVISIONS	
NO.	
DATE	
BY	
REVISIONS	
NO.	



FILE NAME	USER NAME	DESIGNED	REVISED	STATE OF ILLINOIS DEPARTMENT OF TRANSPORTATION		COUNTY HIGHWAY #4 PROPOSED RIGHT OF WAY & EASEMENT SHEET		F.A.S. RTE.	SECTION	COUNTY	TOTAL SHEETS	SHEET NO.
#FILE#	*USER*	- AMH	-			SCALE: 1"=50'		393	12-00001-01-RS	KNOX	174	61
	PLOT SCALE	CHECKED	REVISED			SHEET NO. 61 OF 174 SHEETS		COUNTY HIGHWAY #4		CONTRACT NO. 89614		
	SCALE	- JLH	-			STA. 30+00.00 TO STA. 45+00.00		ILLINOIS FED. AID PROJECT		RS-0393 (10/9)		
	DATE	DATE	REVISED									
		- MARCH 2013	-									