

DATE	
BY	
REVISIONS	
PLANNED	
NOTED	
ALIGNED	
CHECKED	
DATE	
NO.	
FILE NAME	

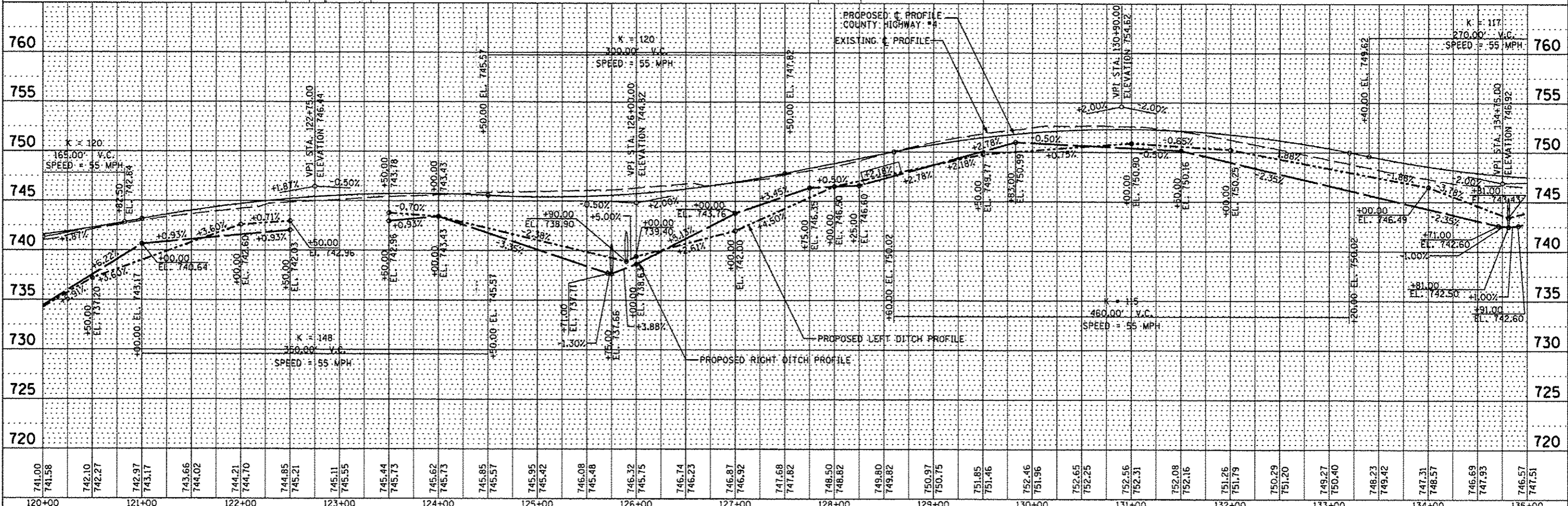
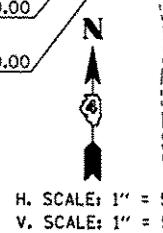
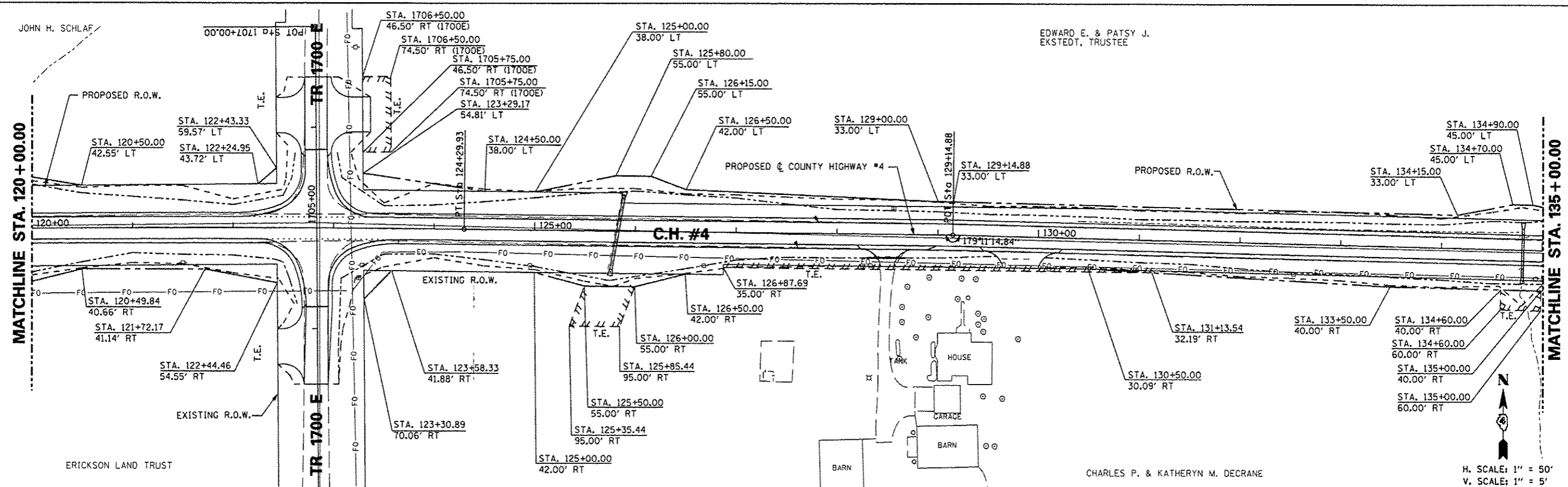
DATE	
BY	
REVISIONS	
PLANNED	
NOTED	
ALIGNED	
CHECKED	
DATE	
NO.	
FILE NAME	

JOHN H. SCHLAF

EDWARD E. & PATSY J. EKSTEDT, TRUSTEE

MATCHLINE STA. 120+00.00

MATCHLINE STA. 135+00.00



741.00	741.58	742.10	742.27	742.97	743.17	743.66	744.02	744.21	744.70	744.85	745.21	745.11	745.55	745.44	745.73	745.62	745.73	745.85	745.57	745.95	745.42	745.21	745.08	745.48	746.32	745.75	746.74	746.23	746.87	746.92	747.68	747.82	748.50	748.82	749.80	749.82	750.97	750.75	751.85	751.46	752.46	751.96	752.65	752.25	752.56	752.31	752.08	752.16	751.26	751.79	750.29	751.20	749.27	750.40	748.23	749.42	747.31	748.57	746.69	747.93	746.57	747.51
120+00	121+00	122+00	123+00	124+00	125+00	126+00	127+00	128+00	129+00	130+00	131+00	132+00	133+00	134+00	135+00																																															

STATE OF ILLINOIS
DEPARTMENT OF TRANSPORTATION

COUNTY HIGHWAY #4
PROPOSED RIGHT OF WAY & EASEMENT SHEET

F.A.S. RTE.	SECTION	COUNTY	TOTAL SHEETS	SHEET NO.
393	12-00001-01-RS	KNOX	174	67
COUNTY HIGHWAY #4		CONTRACT NO. 89614		
SCALE: 1"=50'		SHEET NO. 67 OF 174 SHEETS		STA. 120+00.00 TO STA. 135+00.00
FED ROAD DIST NO. 4		ILLINOIS FED. AID PROJECT R5-0393 (105)		