

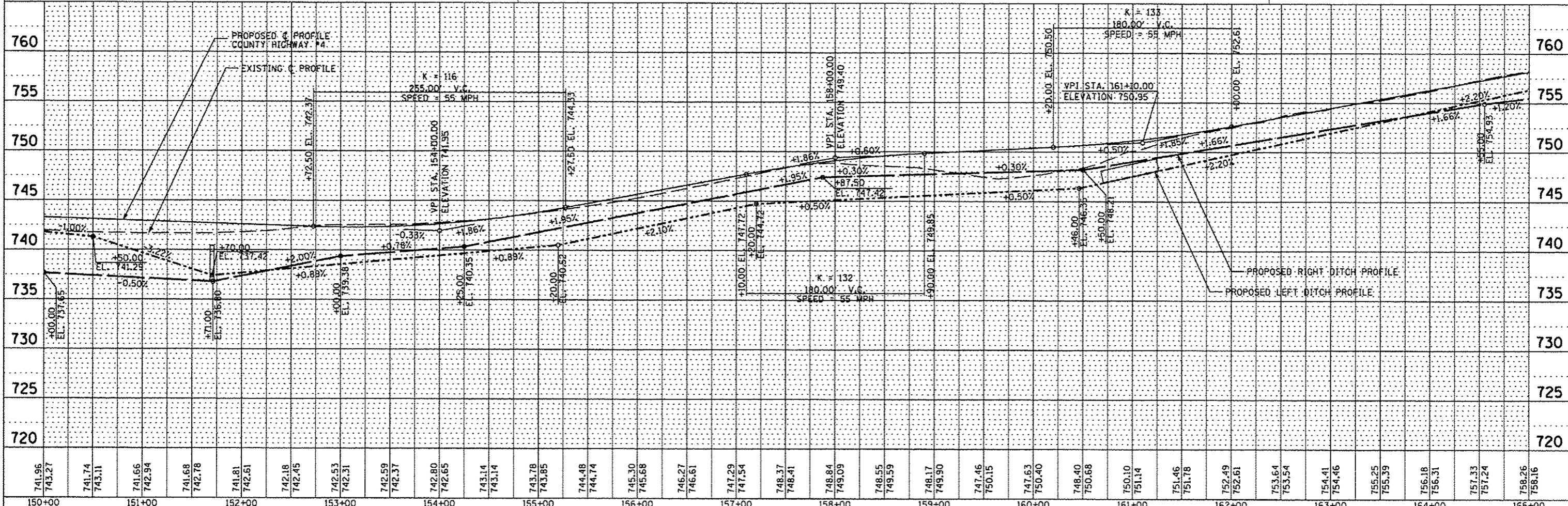
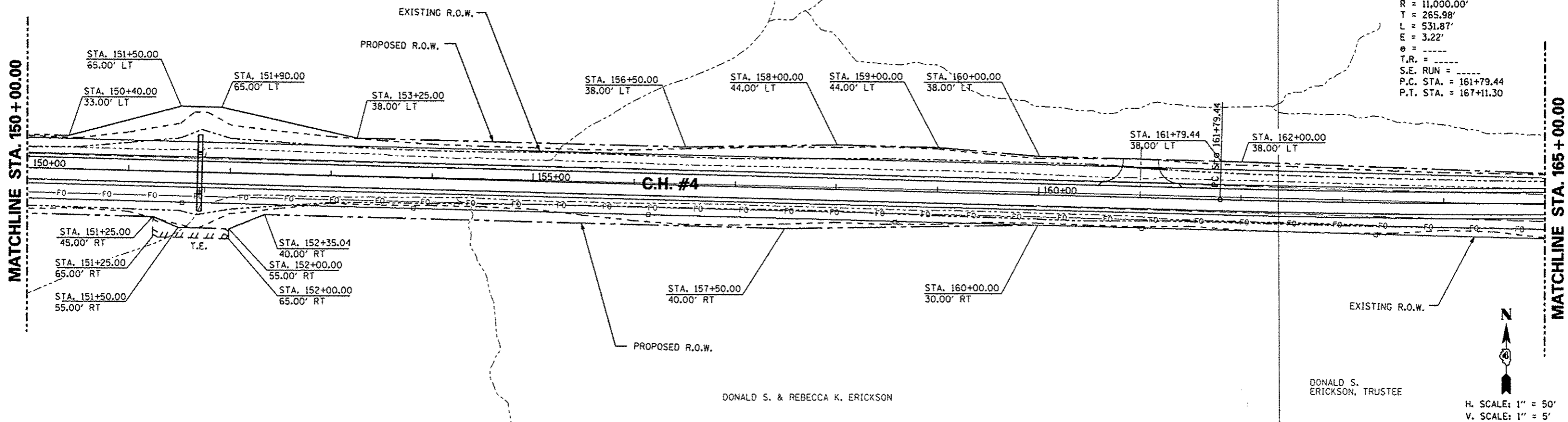
PLAN	DATE
BY	
REVISIONS	
NO. 1	
NO. 2	
NO. 3	
NO. 4	
NO. 5	
NO. 6	
NO. 7	
NO. 8	
NO. 9	
NO. 10	

PROFILE	DATE
BY	
REVISIONS	
NO. 1	
NO. 2	
NO. 3	
NO. 4	
NO. 5	
NO. 6	
NO. 7	
NO. 8	
NO. 9	
NO. 10	

BARBARA E. & ALFRED O. PAULUS

GRACE E. EDWARDS

PROP. CURVE PRCH4-3  
 PI STA. = 164+45.42  
 $\Delta = 2^\circ 46' 13''$  (LT)  
 $D = 0^\circ 31' 15''$   
 $R = 11,000.00'$   
 $T = 265.98'$   
 $L = 531.87'$   
 $E = 3.22'$   
 $e = \text{---}$   
 $T.R. = \text{---}$   
 $S.E. RUN = \text{---}$   
 $P.C. STA. = 161+79.44$   
 $P.T. STA. = 167+11.30$



741.96	743.27	741.74	743.11	741.66	742.94	741.68	742.78	741.81	742.61	742.18	742.45	742.53	742.31	742.59	742.37	742.80	742.65	743.14	743.14	743.78	743.85	744.48	744.74	745.30	745.68	746.27	746.61	747.29	747.54	748.37	748.41	748.84	749.09	748.55	749.59	748.17	749.90	747.46	750.15	747.63	750.40	748.40	750.68	750.10	751.14	751.46	751.78	752.49	752.61	753.64	753.54	754.41	754.46	755.25	755.39	756.18	756.31	757.33	757.24	758.26	758.16
150+00	151+00	152+00	153+00	154+00	155+00	156+00	157+00	158+00	159+00	160+00	161+00	162+00	163+00	164+00	165+00																																														

STATE OF ILLINOIS  
 DEPARTMENT OF TRANSPORTATION

COUNTY HIGHWAY #4  
 PROPOSED RIGHT OF WAY & EASEMENT SHEET

F.A.S. RTE.	SECTION	COUNTY	TOTAL SHEETS	SHEET NO.
393	12-0001-01-RS	KNOX	174	69
COUNTY HIGHWAY #4		CONTRACT NO. 89614		
FED ROAD DIST NO. 4		ILLINOIS FED. AID PROJECT RS-0393 (105)		

SCALE: 1"=50' SHEET NO. 69 OF 174 SHEETS STA. 150+00.00 TO STA. 165+00.00