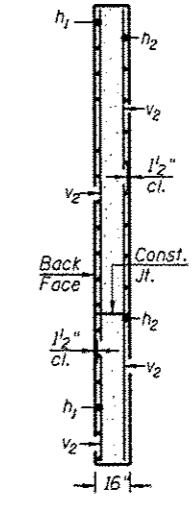
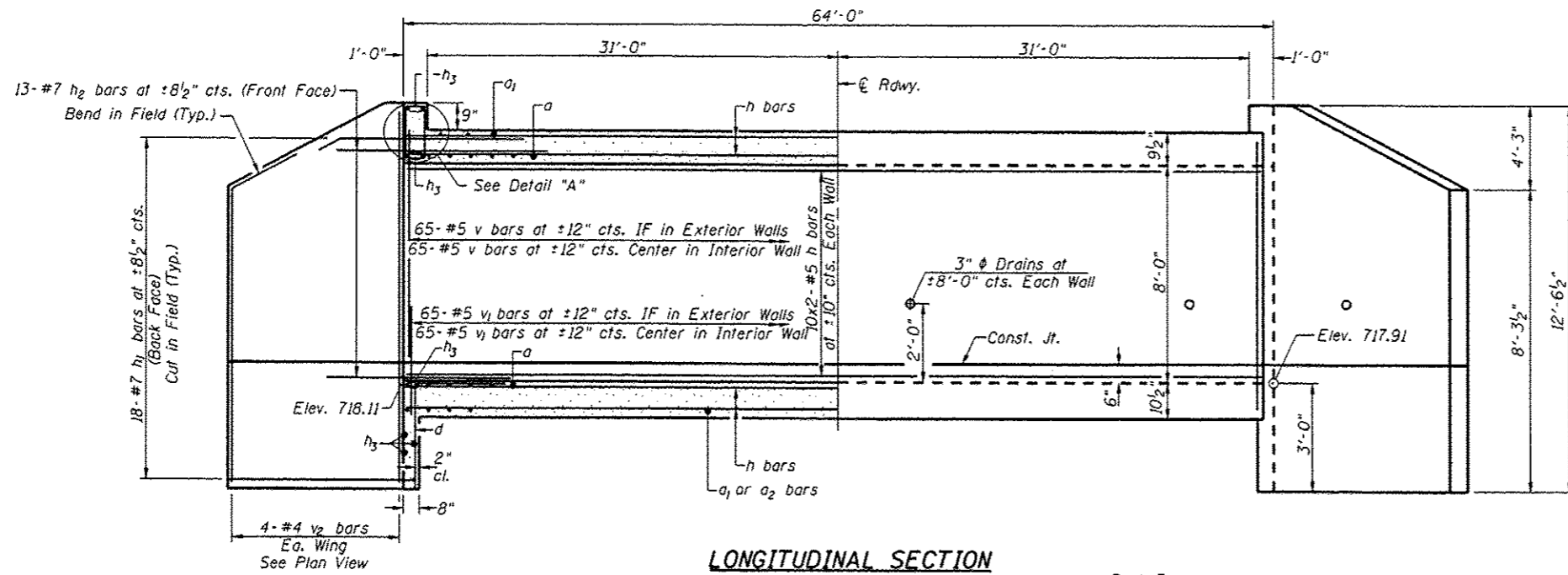
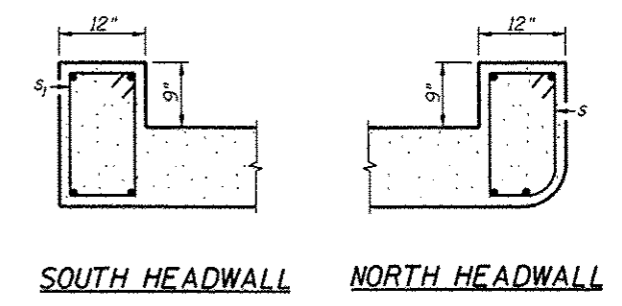
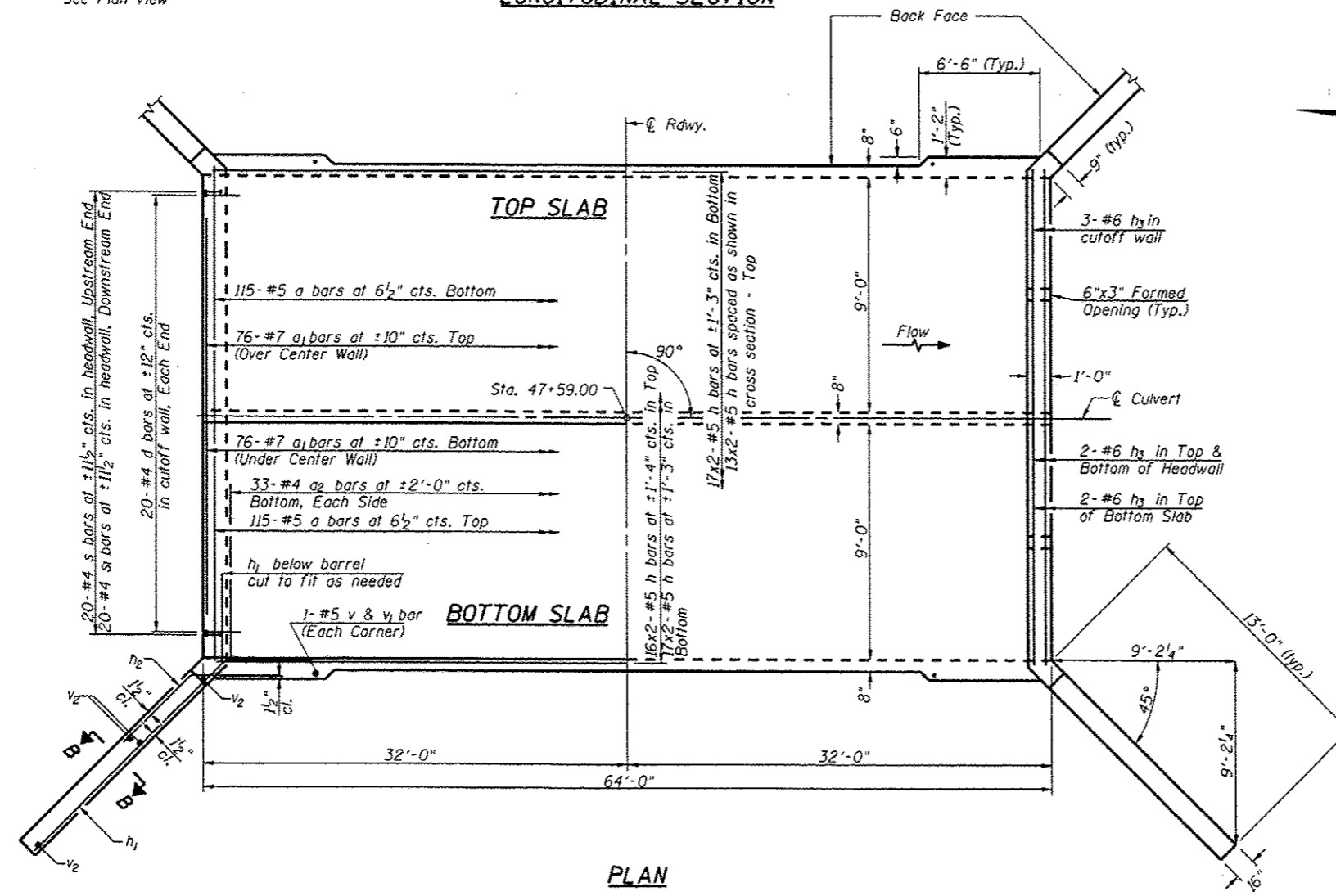


Bars indicated thus 16x2-#5 etc. indicates 16 lines of bars with 2 lengths per line.



Notes:  
IF = Inner Face



MIN. BAR LAP  
 #5 = 1'-8"  
 #6 = 2'-0"  
 #7 = 2'-9"

**CULVERT DETAILS**  
 KNOX COUNTY  
 SECTION 12-00001-01-RS  
 C.H. 4 OVER WALNUT CREEK TRIBUTARY

|             |                                |                |                               |              |           |
|-------------|--------------------------------|----------------|-------------------------------|--------------|-----------|
| SHEET NO. 2 | ROUTE NO.                      | SECTION        | COUNTY                        | TOTAL SHEETS | SHEET NO. |
|             | CH 4                           | 12-00001-01-RS | KNOX                          | 174          | 77        |
| 5 SHEETS    | S.N. 048-5038                  |                | CONTRACT NO. 89614            |              |           |
|             | FED. ROAD DIST. NO. 7 ILLINOIS |                | FED. AID PROJECT RS-0393(105) |              |           |