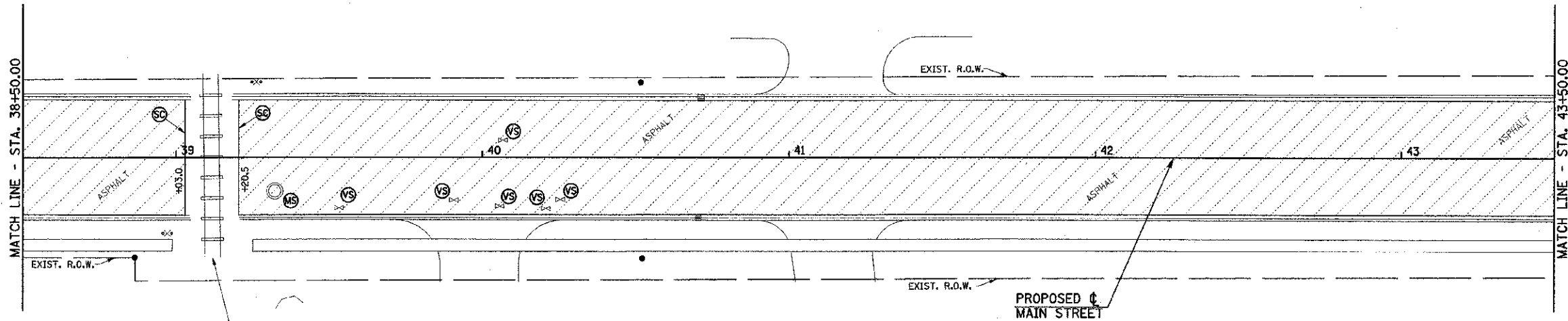
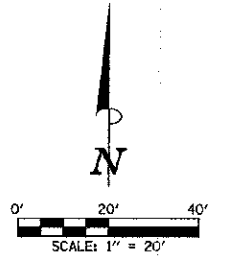


SEC. 9, T.19N., R.9E., 3rd P.M.
CHAMPAIGN COUNTY, ILLINOIS



ALL TREES SHALL BE SAVED UNLESS OTHERWISE SHOWN ON THE PLANS OR DIRECTED BY THE ENGINEER.

ITEMS NOT SHOWN TO BE ADJUSTED OR REMOVED SHALL NOT BE DISTURBED UNLESS OTHERWISE DIRECTED BY THE ENGINEER.

SOME OF THE TOPOGRAPHIC INFORMATION OUTSIDE OF THE ROADWAY SHOWN ON THIS SHEET IS BASED ON AERIAL PHOTOGRAPHY AND IS APPROXIMATE.

UTILITY INFORMATION IS ONLY SHOWN IN AREAS OF PROPOSED UNDERGROUND WORK.

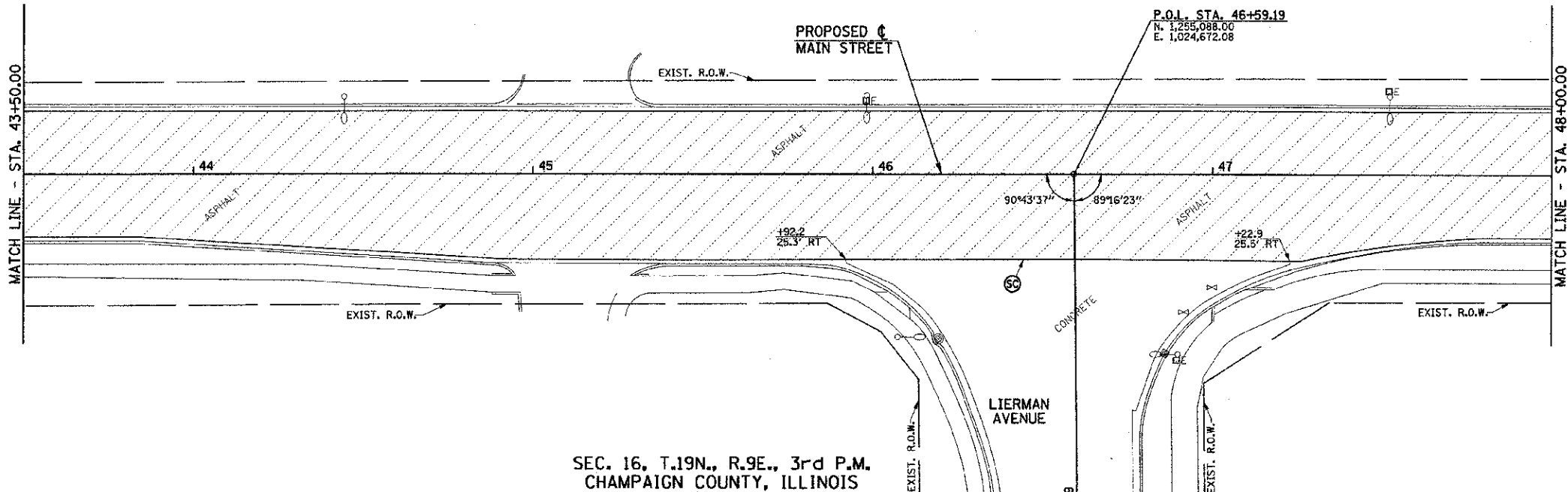
NORFOLK SOUTHERN R.R.
MILE POST UM 29.5
DOT CROSSING NO. 480169X
**DO NOT DISTURB
EXISTING RAILROAD
GRADE CROSSING**

PROPOSED ϕ
MAIN STREET

LEGEND	
	PAVEMENT REMOVAL
	HMA SURFACE REMOVAL
	P.C.C. SIDEWALK REMOVAL
	DRIVEWAY PAVEMENT REMOVAL
	CONCRETE STEP REMOVAL
	BRICK SIDEWALK REMOVAL
	CONCRETE MEDIAN SURFACE REMOVAL
	RETAINING WALL REMOVAL
	COMBINATION CURB AND GUTTER REMOVAL
	DOMESTIC METER VAULTS TO BE ADJUSTED
	DOMESTIC WATER SERVICE BOXES TO BE ADJUSTED
	INLET TO BE ADJUSTED
	INLET TO BE REMOVED
	VALVE BOXES TO BE ADJUSTED
	MANHOLES TO BE ADJUSTED
	VALVE BOXES TO BE ADJUSTED (SPECIAL)
	MANHOLES TO BE ADJUSTED (SPECIAL)
	HANDHOLE TO BE ADJUSTED
	JUNCTION BOX TO BE ADJUSTED
	INLETS TO BE ADJUSTED (SPECIAL)
	INLETS TO BE ADJUSTED WITH NEW FRAME AND GRATE (SPECIAL)
	SAW CUT

SEC. 16, T.19N., R.9E., 3rd P.M.
CHAMPAIGN COUNTY, ILLINOIS

SEC. 9, T.19N., R.9E., 3rd P.M.
CHAMPAIGN COUNTY, ILLINOIS



SEE SHEET 25 FOR REMOVAL NOTES.

SEC. 16, T.19N., R.9E., 3rd P.M.
CHAMPAIGN COUNTY, ILLINOIS

FILE NAME = p:\U070062_Urbana - Main Street (TEP)\Plans\sheet\08-removal.dgn	DESIGNED - J.A.J.	REVISED -	STATE OF ILLINOIS DEPARTMENT OF TRANSPORTATION	REMOVAL PLANS		F.A.I.D. RTE.	SECTION	COUNTY	TOTAL SHEETS	SHEET NO.	
PLOT DATE = 3/6/2013 11:44:12 PM	DRAWN - D.L.M.	REVISED -		7124	09-00483-01-RS	CHAMPAIGN	75	20			
	CHECKED - S.M.W.	REVISED -		SCALE: 1"=20'		SHEET NO. 20 OF 75 SHEETS		STA. 38+50.00 TO STA. 48+00.00		CONTRACT NO. 91480	
	DATE - 03/2013	REVISED -									