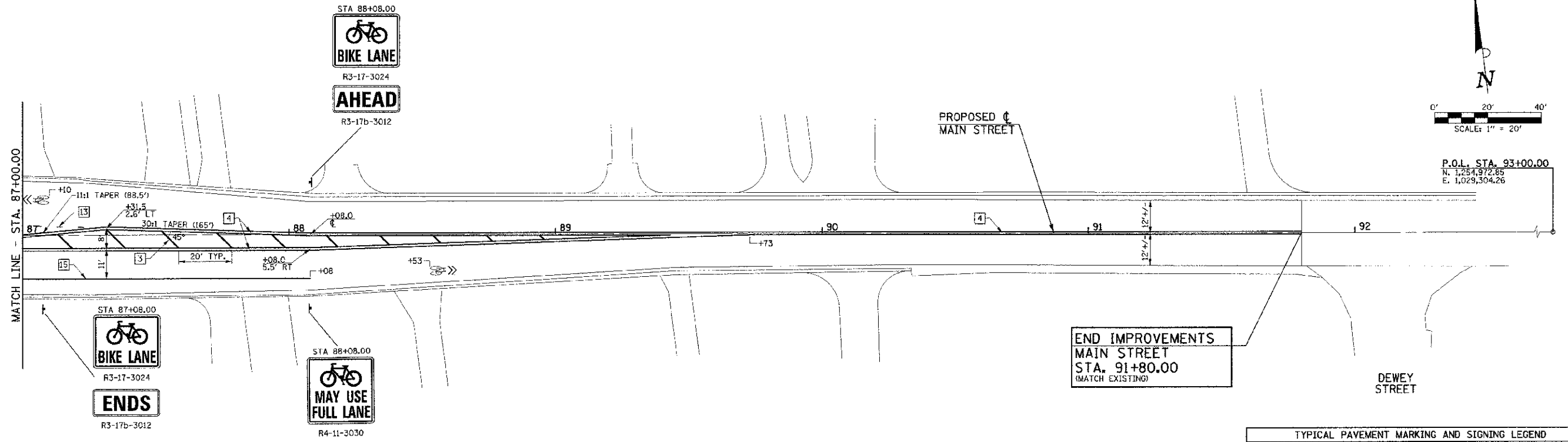


SEC. 10, T.19N., R.9E., 3rd P.M.
CHAMPAIGN COUNTY, ILLINOIS



SEC. 15, T.19N., R.9E., 3rd P.M.
CHAMPAIGN COUNTY, ILLINOIS

TYPICAL PAVEMENT MARKING AND SIGNING LEGEND			
1	4" SKIP-DASH (YELLOW)	9	12" DIAGONAL (WHITE)
2	4" SOLID (YELLOW)	10	6" CROSSWALK (WHITE)
3	12" DIAGONAL (YELLOW)	11	24" STOP BAR (WHITE)
4	4" DOUBLE (YELLOW) (NARROW)	12	8" SOLID (WHITE)*
5	4" DOUBLE (YELLOW) (WIDE)*	13	4" LANE LINE EXTENSIONS (WHITE)
6	6" DIAGONAL (YELLOW)*	14	12" CROSSWALK (WHITE)*
7	4" SKIP-DASH (WHITE)*	15	6" SOLID (WHITE)
8	4" SOLID (WHITE)	16	6" LANE LINE EXTENSIONS (WHITE)
*NOT USED		*METAL POST - TYPE B	

FILE NAME = p:\0070032_Urbana - Main Street IEP\Plansheets\14-pvmt-marking.dgn
PLOT DATE = 3/6/2013 11:44:28 PM

DESIGNED - J.A.J.	REVISED -
DRAWN - D.L.M.	REVISED -
CHECKED - S.M.W.	REVISED -
DATE - 03/2013	REVISED -

STATE OF ILLINOIS
DEPARTMENT OF TRANSPORTATION

PAVEMENT MARKING AND SIGNING PLANS

SCALE: 1"=20' SHEET NO. 55 OF 75 SHEETS STA. 87+00.00 TO STA. 93+00.00

F.A.I. R.T.E.	SECTION	COUNTY	TOTAL SHEETS	SHEET NO.
7124	09-00483-01-RS	CHAMPAIGN	75	55
MAIN STREET			CONTRACT NO. 91480	
FED. ROAD DIST. NO. ILLINOIS FED. AID PROJECT				