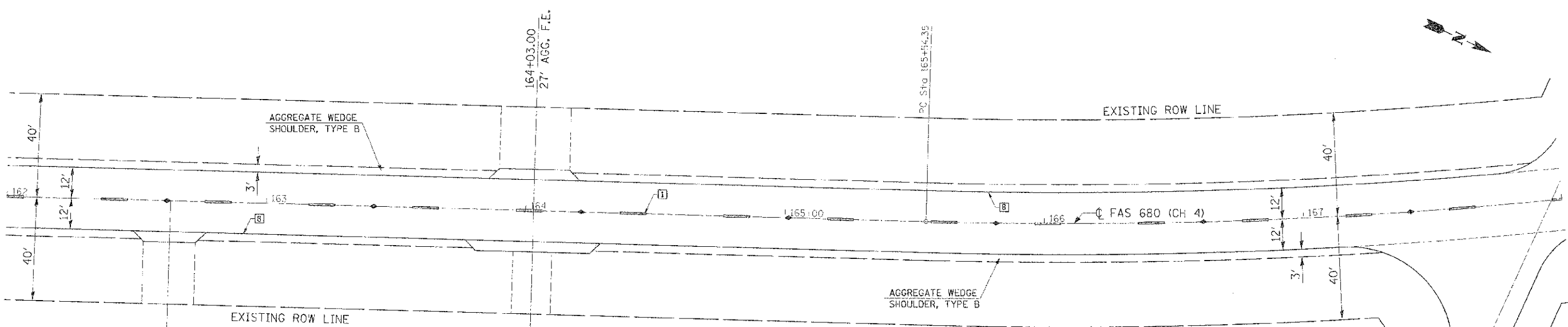
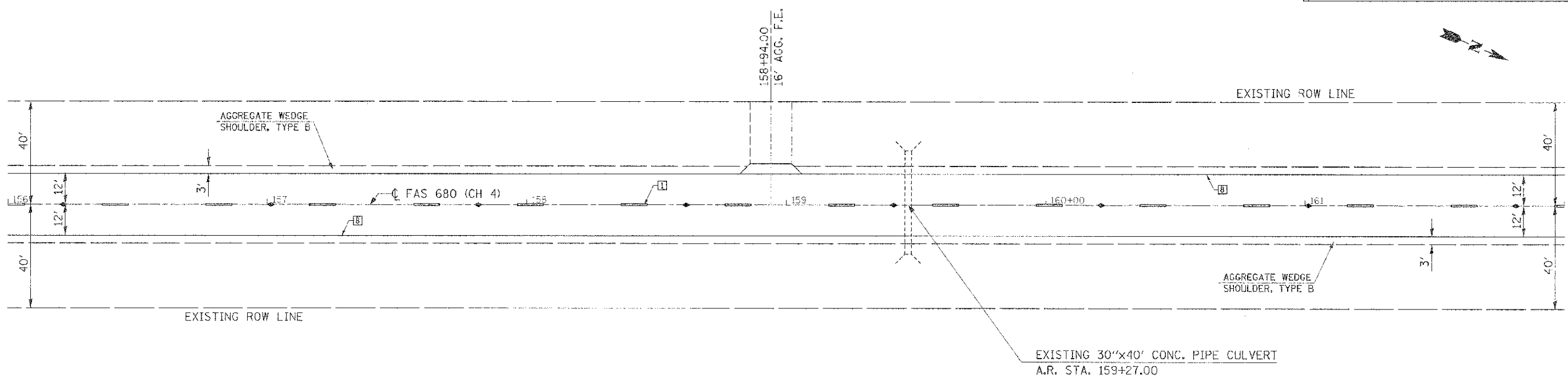


ROUTE	SECTION	COUNTY	TOTAL SHEETS	SHEET NO.
FAS 680 (CH 4)	12-0011-00-RS	EDGAR	27	19
EDGAR COUNTY, ILLINOIS			CONTRACT NO. 91485	
FED. AID PROJECT				



**TYPICAL PAVEMENT MARKING LEGEND**

- [1] 4" (100) SKIP-DASH (YELLOW)
- [2] 4" (100) SOLID (YELLOW)
- [3] 12" (300) DIAGONAL (YELLOW)
- [4] 4" (100) DOUBLE YELLOW (NARROW)
- [8] 4" (100) SOLID (WHITE)

**TYPICAL PAVEMENT MARKERS LEGEND**

- ◆ TWO-WAY AMBER MARKER
- ▼ ONE-WAY AMBER MARKER
- ▽ ONE-WAY CRYSTAL MARKER

EXIST. CURVE LOWER 7-8  
 P: STA. = 168+60.58  
 $\Delta = 18^\circ 13' 00''$  (L.T.)  
 $D = 2^\circ 59' 59''$   
 $R = 1,910.03'$   
 $T = 306.23'$   
 $L = 607.29'$   
 $E = 24.33'$   
 P.C. STA. = 165+54.35  
 P.T. STA. = 171+61.64

**PLAN**

SCALE: 1" = 20'



**EDGAR COUNTY HIGHWAY DEPARTMENT**