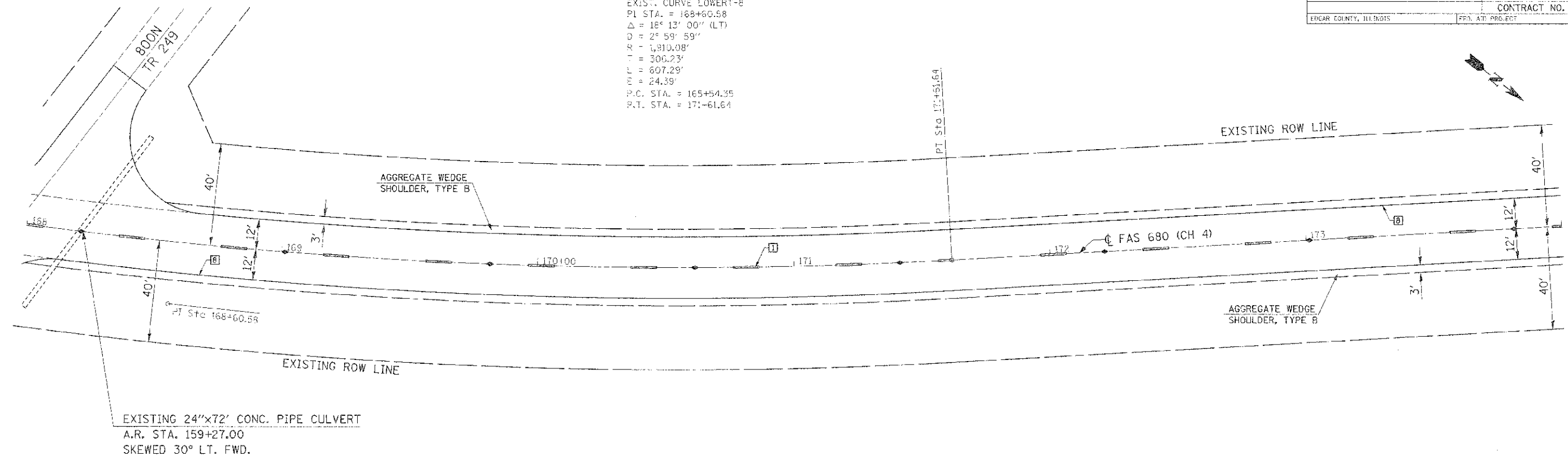
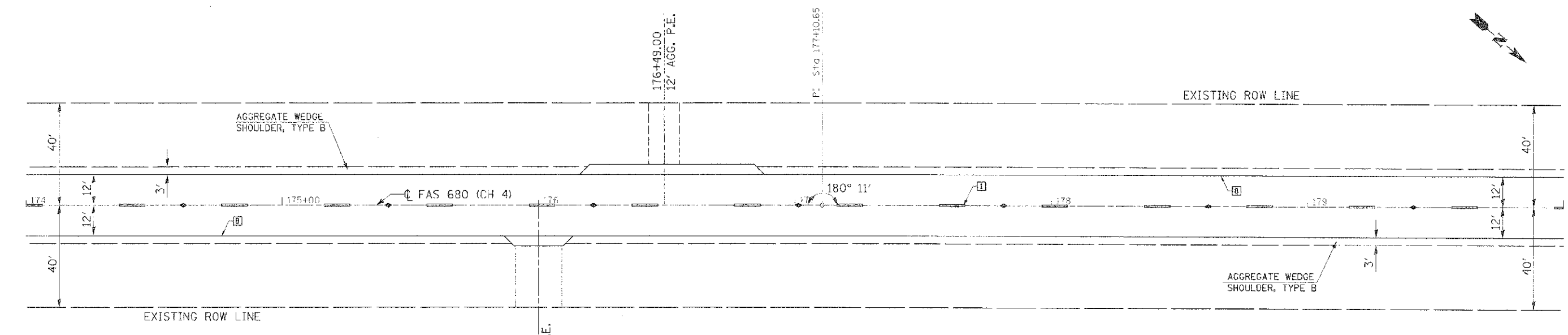


ROUTE	SECTION	COUNTY	TOTAL SHEETS	SHEET NO.
FAS 680 (CH 4)	12-00111-00-RS	EDGAR	27	20
EDGAR COUNTY, ILLINOIS			CONTRACT NO. 91485	
			FED. AID PROJ. ECT	

EXIST. CURVE LOWERT-8  
 P.I. STA. = 168+60.58  
 $\Delta = 16^\circ 13' 00''$  (LT)  
 $D = 2^\circ 59' 59''$   
 $R = 1,810.08'$   
 $T = 300.23'$   
 $L = 607.29'$   
 $E = 24.39'$   
 P.C. STA. = 165+54.35  
 P.T. STA. = 171+61.64



EXISTING 24"x72' CONC. PIPE CULVERT  
 A.R. STA. 159+27.00  
 SKEWED 30° LT. FWD.



176+00.00  
 18' AGG. F.I.E.

TYPICAL PAVEMENT MARKING LEGEND

- 1 4" (100) SKIP-DASH (YELLOW)
- 2 4" (100) SOLID (YELLOW)
- 3 12" (300) DIAGONAL (YELLOW)
- 4 4" (100) DOUBLE YELLOW (NARROW)
- 8 4" (100) SOLID (WHITE)

TYPICAL PAVEMENT MARKERS LEGEND

- ◆ TWO-WAY AMBER MARKER
- ▶ ONE-WAY AMBER MARKER
- ▷ ONE-WAY CRYSTAL MARKER

PLAN  
 #JALS  
 SCALE: 1" = 20'



EDGAR COUNTY  
 HIGHWAY DEPARTMENT

FILE 9