

ADAMS COUNTY, ILLINOIS - HIGHWAY DEPARTMENT

F.A.S. RTE.	SECTION	COUNTY	TOTAL SHEETS	SHEET NO.
1598	11-00218-00-BR	ADAMS	53	1
ILLINOIS			CONTRACT NO. 93590	

BRIDGE REPLACEMENT AND PAVEMENT

FAS 1598 (CH 27 /CANNONBALL RD) over B.N.S.F. RAILWAY

PROJECT NO.: BRS-1598(100)

JOB NO.: C-96-228-11

SECTION: 11-00218-00-BR

FEDERAL HIGHWAY BRIDGE PROGRAM FUNDING

INDEX OF SHEETS

- 1 COVER SHEET
- 2 GENERAL NOTES
- 3-6 SUMMARY OF QUANTITIES
- 7-8 TYPICAL SECTIONS
- 9 HORIZONTAL CONTROL TIES
- 10-11 SCHEDULE OF QUANTITIES
- 12-15 PLAN AND PROFILES
- 16 TRAFFIC CONTROL PLAN
- 17-45 S.N. 001-3338 PLANS
- 46-48 MISCELLANEOUS DETAILS
- 49-53 CROSS SECTIONS

HIGHWAY STANDARDS

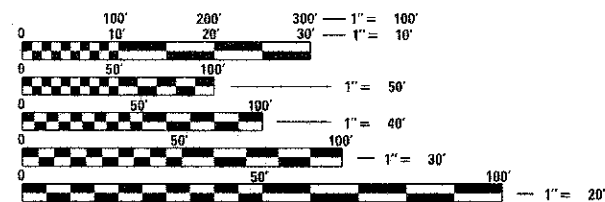
000001-06	602701-02	701001-02
280001-07	604101-01	701006-04
420001-07	630001-10	701011-03
515001-03	631031-11	701301-04
542301-03	635006-03	701901-02
601101-01	635011-02	780001-03
602401-03	666001-01	BLR 21-9
602601-02		

DESIGN DESIGNATION

FAS 1598 (CH 27 /CANNONBALL ROAD)
MAJOR COLLECTOR - RURAL
ADT = 1050 (2011) 1280 (2031)
DESIGN SPEED = 50 MPH

PROJECT DESCRIPTION

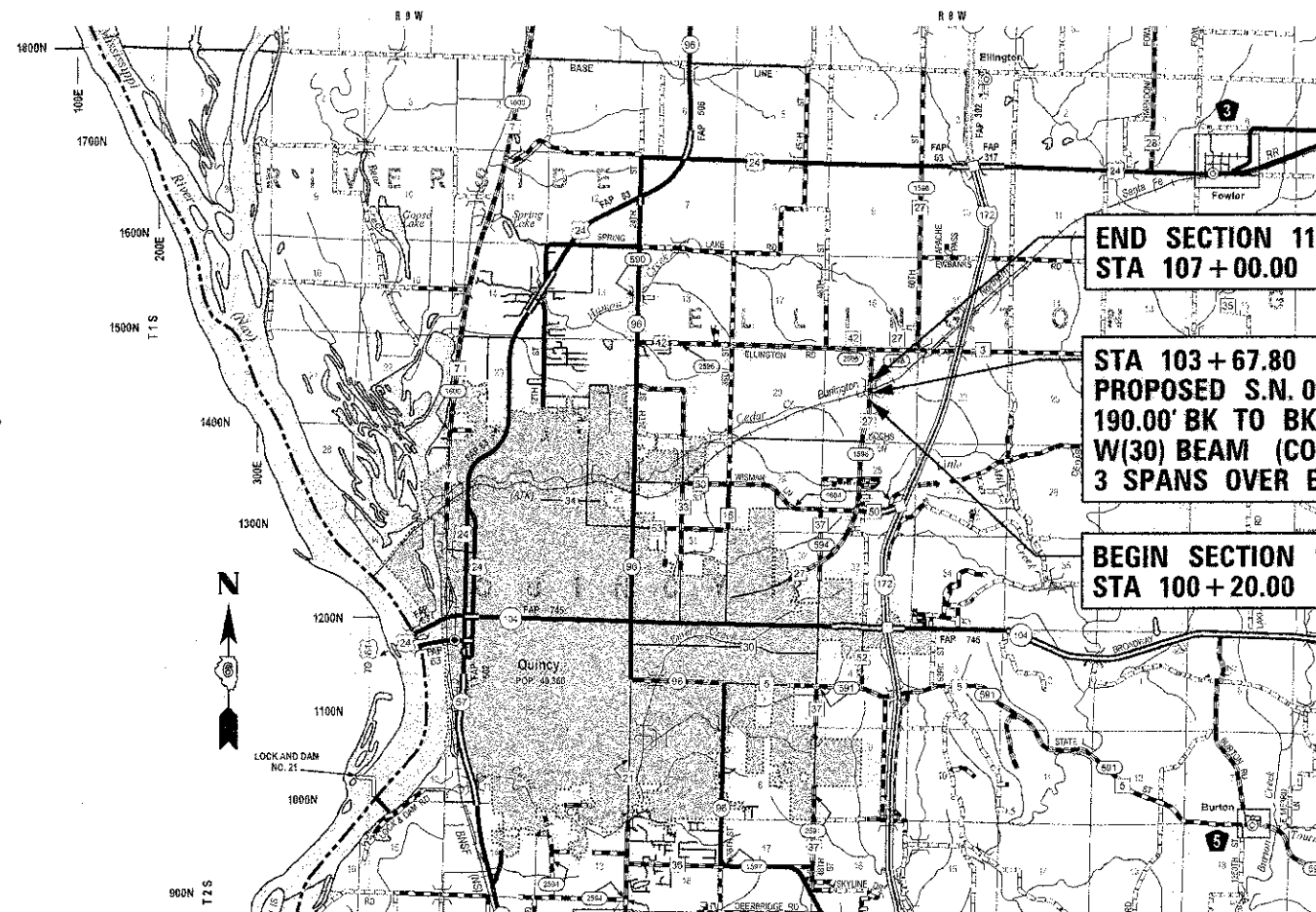
Project consists of removing the existing S.N. 001-9902 carrying FAS 1598 over the Burlington Northern Santa Fe Railway tracks and constructing a new 3 span steel beam bridge. Additional work includes HMA pavement, aggregate shoulders, guardrail, aggregate base, seeding, and other miscellaneous items.



FULL SIZE PLANS HAVE BEEN PREPARED USING STANDARD ENGINEERING SCALES. REDUCED SIZED PLANS WILL NOT CONFORM TO STANDARD SCALES. IN MAKING MEASUREMENTS ON REDUCED PLANS, THE ABOVE SCALES MAY BE USED.

J.U.L.I.E.
JOINT UTILITY LOCATION INFORMATION FOR EXCAVATION
1-800-892-0123
OR 811

CONTRACT NO. 93590

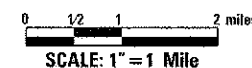


END SECTION 11+00218-00-BR
STA 107+00.00

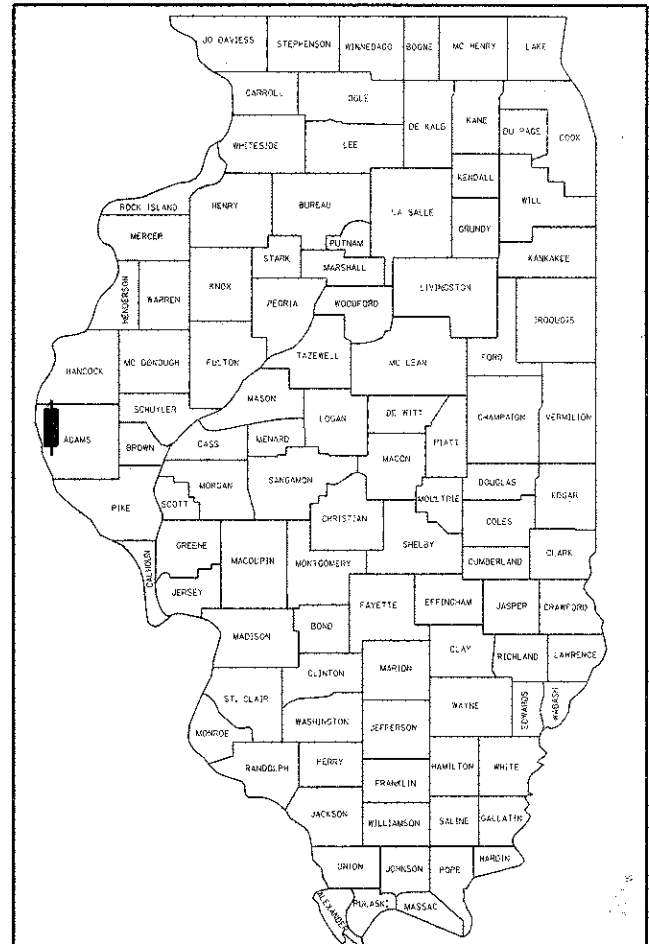
STA 103+67.80
PROPOSED S.N. 001-3338
190.00' BK TO BK OF ABUTMENTS
W(30) BEAM (COMPOSITE)
3 SPANS OVER BNSF RAILROAD

BEGIN SECTION 11+00218-00-BR
STA 100+20.00

LOCATION MAP



NET LENGTH OF SECTION = 680.0 FT. = 0.129 MILE



LOCATION OF SECTION INDICATED THUS: -

APPROVED January 17, 2013
James R. Frankenkoff
COUNTY ENGINEER

PASSED January 30, 2013
Terrence H. Fountain
DISTRICT SIX ENGINEER OF LOCAL ROADS & STREETS

PASSED JANUARY 29, 2013
Ron Duchambeau
DISTRICT SIX ENGINEER OF CONSTRUCTION

Releasing For
Bid Based on
Limited Review January 30, 2013
Roger L. Driskell
DEPUTY DIRECTOR OF HIGHWAYS, REGION FOUR ENGINEER

STATE OF ILLINOIS
DEPARTMENT OF TRANSPORTATION

Plans prepared by:

KLINGNER
& ASSOCIATES, P.C.

Engineers • Architects • Surveyors

816 North 24th Street, Quincy, IL (217)223-9670 - Fax (217)223-9603
4510 Paris Grand Street, Hannibal, MO (573)224-0020 - Fax (573)224-3312
618 N. 4th Street, Suite 100, Burlington, IA (319)752-3993 - Fax (319)752-3959
49 North Prairie Street, Galena, IL (309)342-4042 - Fax (309)341-3761
Internet Address: www.klingner.com

IL DESIGN FIRM NO.: 1842738



Steve E. Bange 1/17/13
STEVE E. BANGE DATE

REGISTERED PROFESSIONAL ENGINEER
STATE OF ILLINOIS NO. 062-053338
LICENSE EXPIRES NOVEMBER 30, 2013