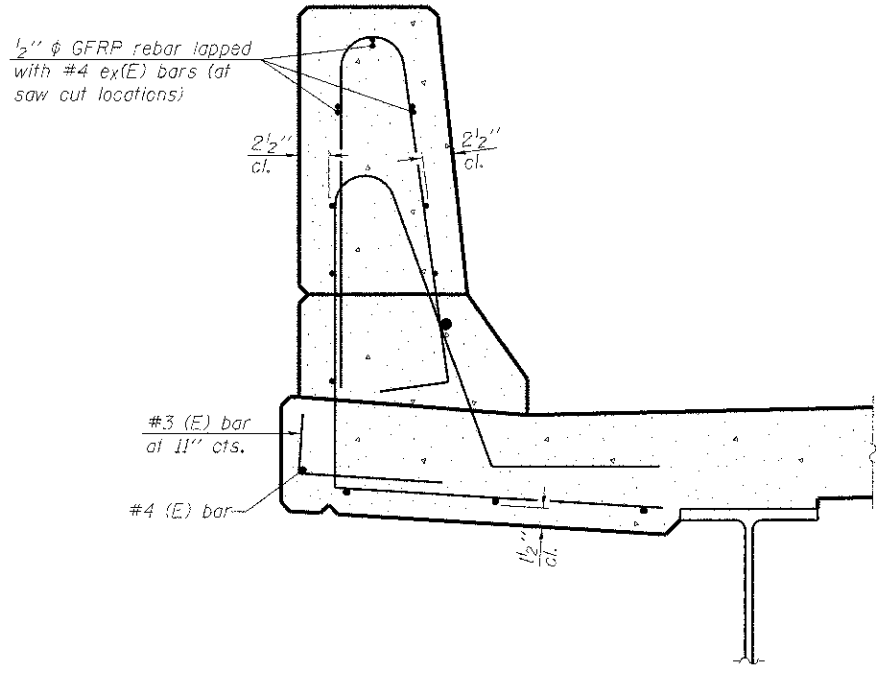
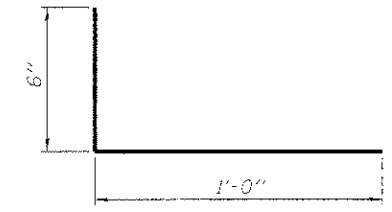


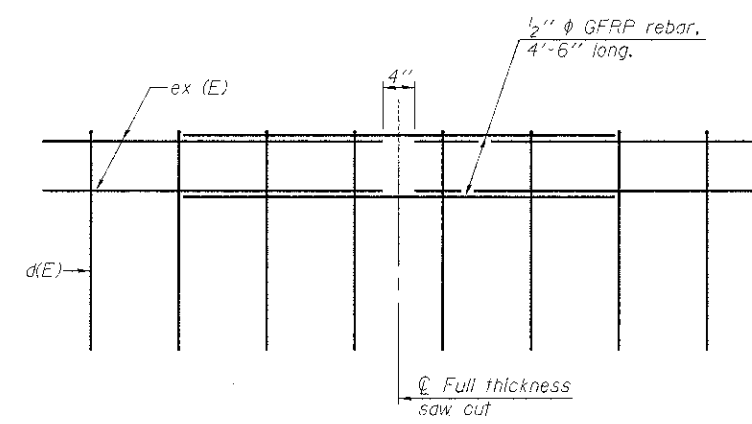
SECTION
(Showing dimensions)



SECTION
(Showing reinforcement clearances for slip forming and additional reinforcement bars)



#3 (E) BAR



GFRP REBAR STIFFENING DETAIL
(Place as shown in parapet section at each parapet joint location.)

* See Superstructure Details.

GENERAL NOTES
All dimensions shall remain the same as shown on superstructure details, except dimensions A and B which are to be revised as shown to provide additional clearance. Additional concrete needed to revise dimension A and B = 0.0165 cu. yds./ft. of parapet.
Place aluminum sheet in curb portion at and near piers. Full thickness saw cut at all joint locations in lieu of cork joint filler.
Steel superstructure shown. Other superstructure types similar.

SFP-34

7-1-10

FILE NAME =	USER NAME = bgj	DESIGNED - ADL	REVISED -	ADAMS COUNTY HIGHWAY DEPARTMENT	CONCRETE PARAPET SLIPFORMING OPTION S.N. 001-3338	F.A.P. RTE.	SECTION	COUNTY	TOTAL SHEETS	SHEET NO.
G:\11\Jes\110215\09 Plans\8-bridge Plans Without Structural Steel\Concrete Parapet Slip	CHECKED - RJP	REVISOR - RJP	REVISED -			1598	11-00218-00-BR	ADAMS	53	40
PLOT SCALE = 3/8" = 1' IN.	DRAWN - RJP	REVISOR -	REVISED -			CONTRACT NO. 93500				
PLOT DATE = 11/5/2012	CHECKED - ADL	REVISOR -	REVISED -			SHEET NO. 24 OF 29 SHEETS				