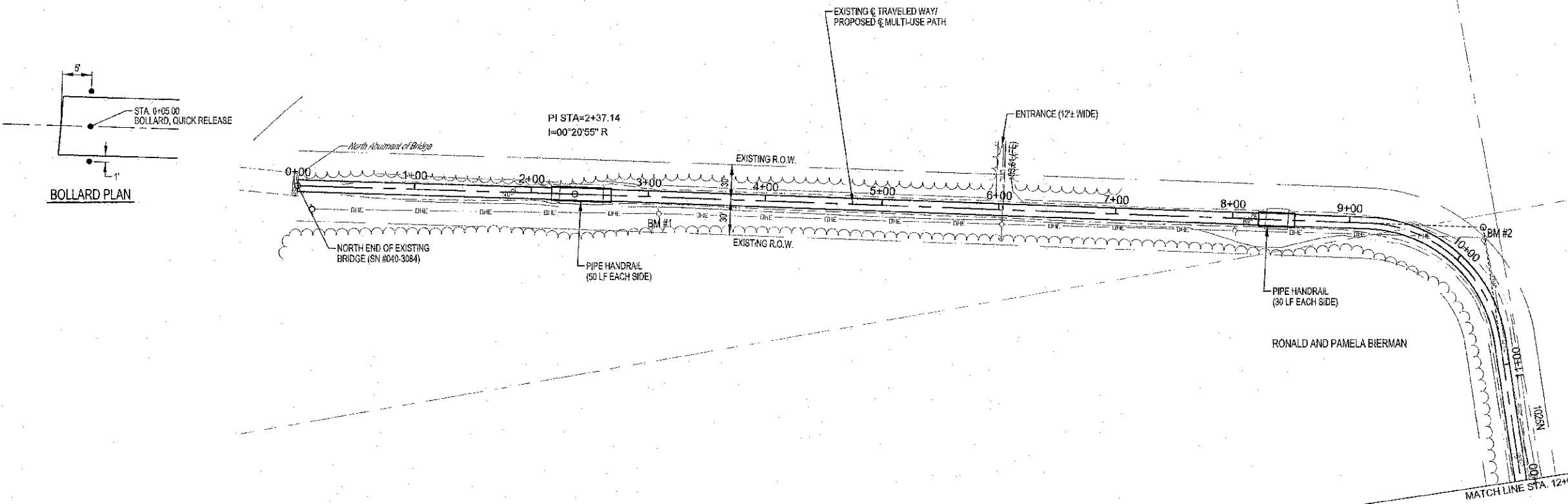


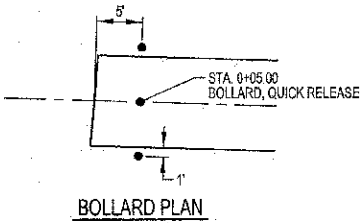
ROUTE NO	SECTION	COUNTY	TOTAL SHEETS	SHEET NO.
10-0045-00-6T		JASPER	46	7

CONTRACT #95708



**CURVE #1**

PI STA=10+14.50
I=79°22'02" R
Da=49°33'27"
T=97.91'
R=118.00'
L=163.46'
C=150.70'
E=35.33'
M=27.19'
PC STA=9+16.59
PT STA=10+80.05

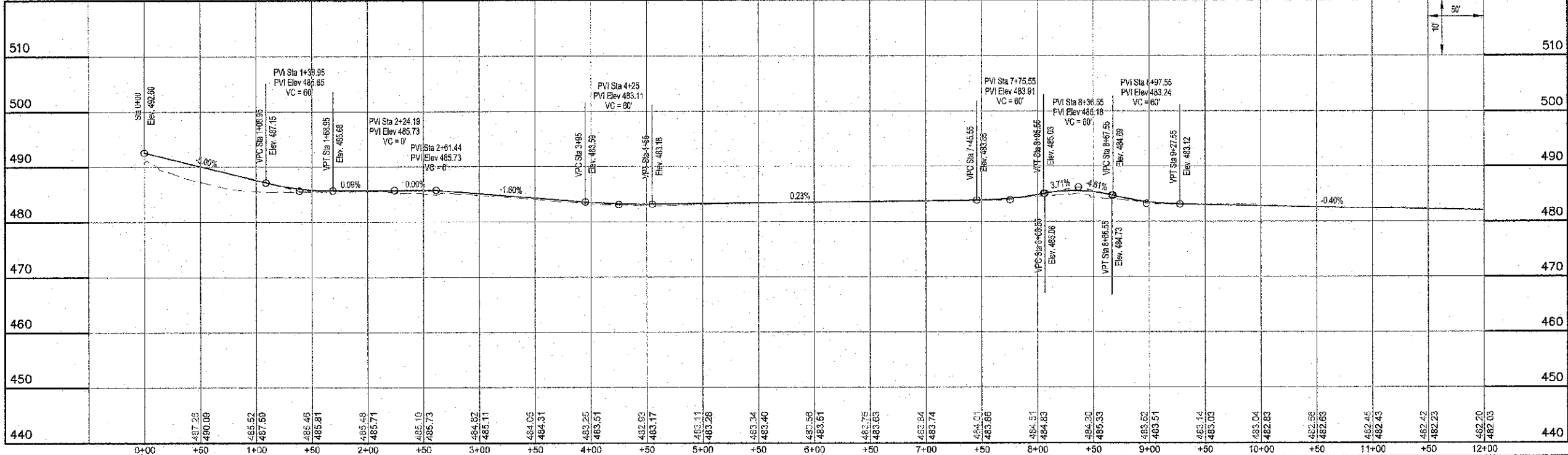


NOTE: CONTRACTOR TO FIELD VERIFY BETWEEN BENCHMARK ELEVATIONS

- BM #1**  
RAILROAD SPIKE IN POWER POLE  
AT 14.1 RT. STA. 3+09.6  
ELEV.=486.75
- BM #2**  
RAILROAD SPIKE IN POWER POLE  
AT 30.0 LT. STA. 10+03.7  
ELEV.=485.49

**MILANO & GRUNLOCH ENGINEERS, LLC**  
114 WEST WASHINGTON  
P.O. BOX 661  
EFFINGHAM, ILLINOIS 62401  
Phone: (217) 347-2232  
(800) 672-2714  
Fax #: (217) 342-3433  
Web Address: www.mgengr.com  
Design Firm #: 154-202108

SCALES:  
1" = 50' HOR  
1" = 10' VER



MULTI-USE PATH