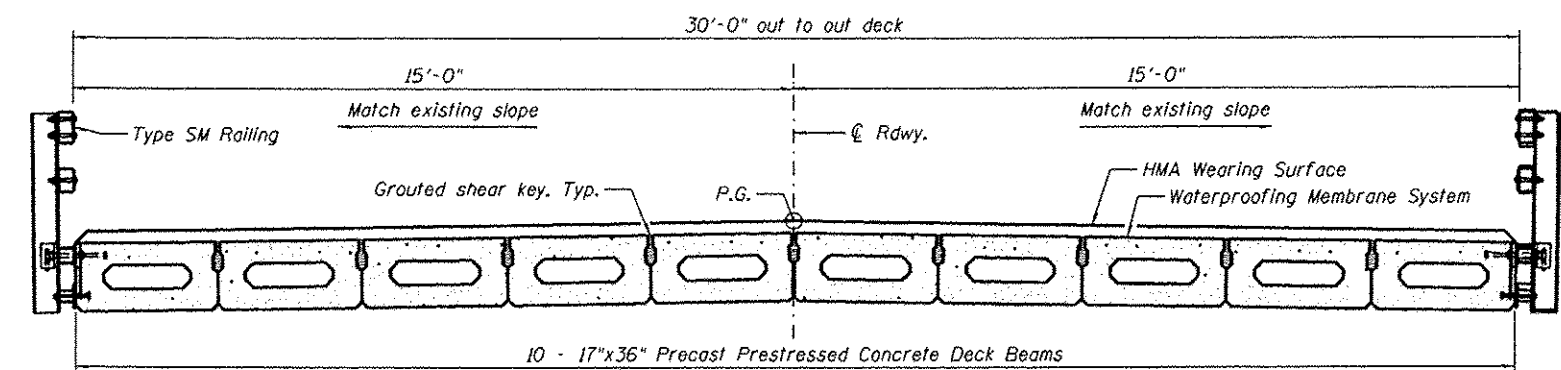
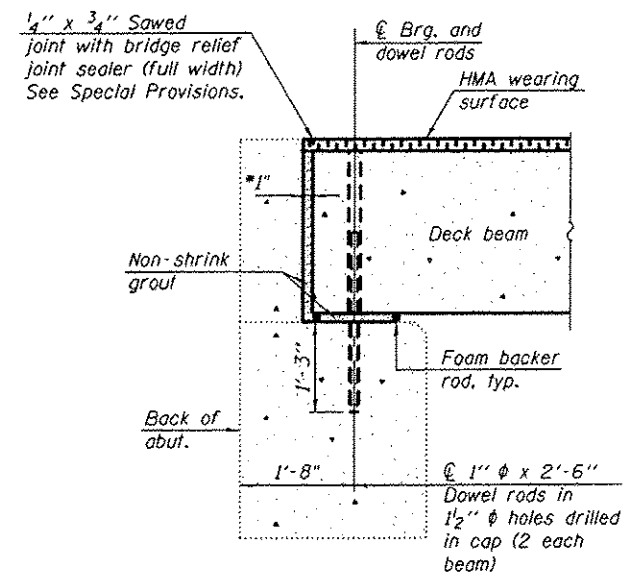


PLAN

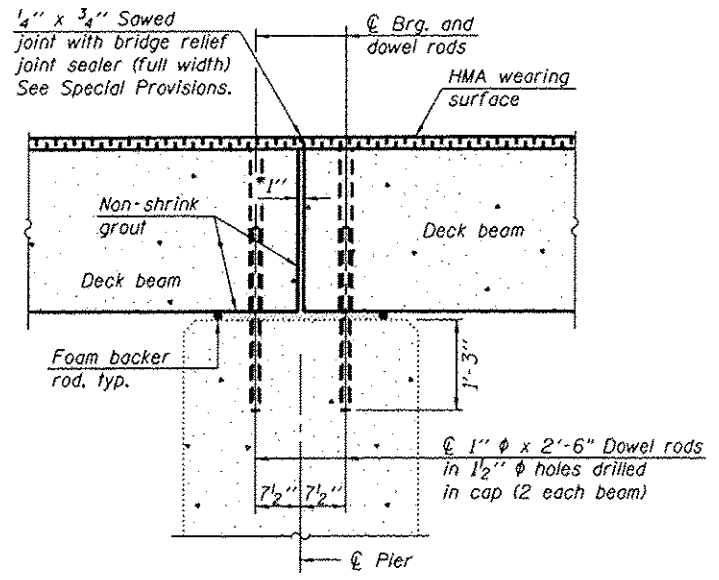


CROSS SECTION
(Looking East)



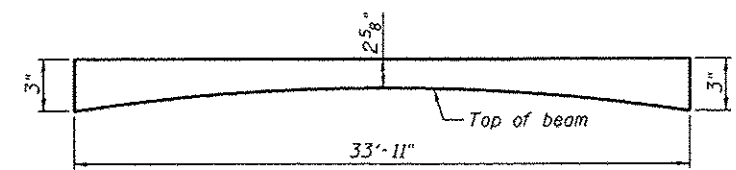
SECTION A-A

(Dimensions are at Rt. L's)
See sheet 6 of 12 for bearing details.
*1" Jt. shall be filled with non-shrink grout. 1" dimension may vary to accommodate tolerance in beam lengths.



SECTION B-B

(Dimensions are at Rt. L's)
See sheet 6 of 12 for bearing details.
*1" Jt. shall be filled with non-shrink grout. 1" dimension may vary to accommodate tolerance in beam lengths.



ANTICIPATED HMA WEARING SURFACE PROFILE
(For information only)

BILL OF MATERIAL

ITEM	UNIT	QUANTITY
HMA Wearing Surface	Tons	53

FILE NAME: P:\120613\4-CA00 - DMS\4-3-31\10678022-97524-082-Superstructure.dgn

THOUVENOT,
WADE &
MOERCHEN, INC.



USER NAME: mjoost	DESIGNED: MJJ	REVISED:
PLOT SCALE: 0:2.0000 1" = 10'	CHECKED: ALN	REVISED:
PLOT DATE: 3/12/2013	DRAWN: MJJ	REVISED:
	CHECKED: ALN	REVISED:

STATE OF ILLINOIS
DEPARTMENT OF TRANSPORTATION

SUPERSTRUCTURE
STRUCTURE NO. 067-6002
SHEET NO. 2 OF 12 SHEETS

F.A.U. RTE. 9304	SECTION 12-00023-01-BR	COUNTY MONROE	TOTAL SHEETS 16	SHEET NO. 6
ROAD DIST. NO.		ILLINOIS FED. AID PROJECT		
		CONTRACT NO. 97524		