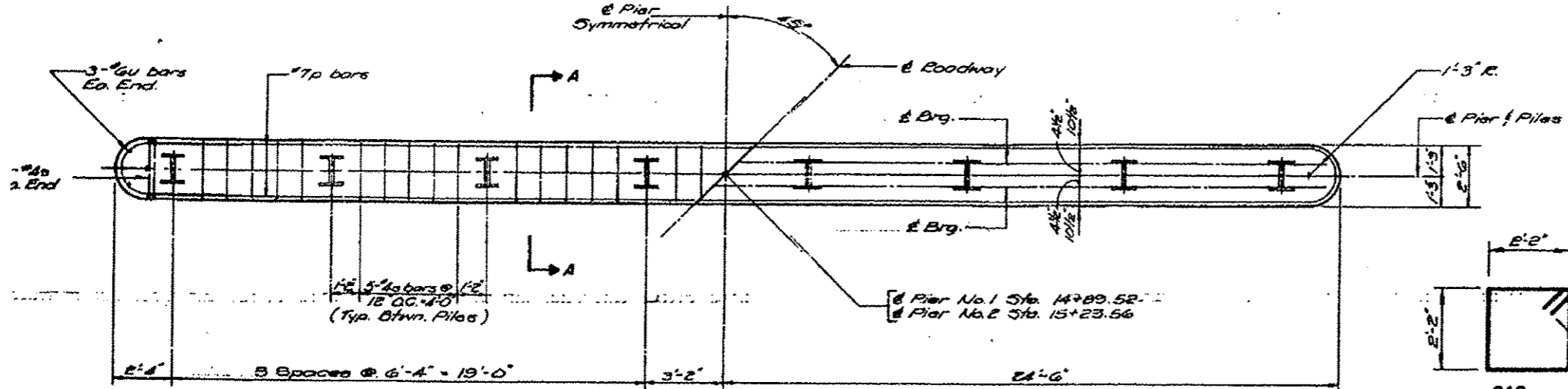


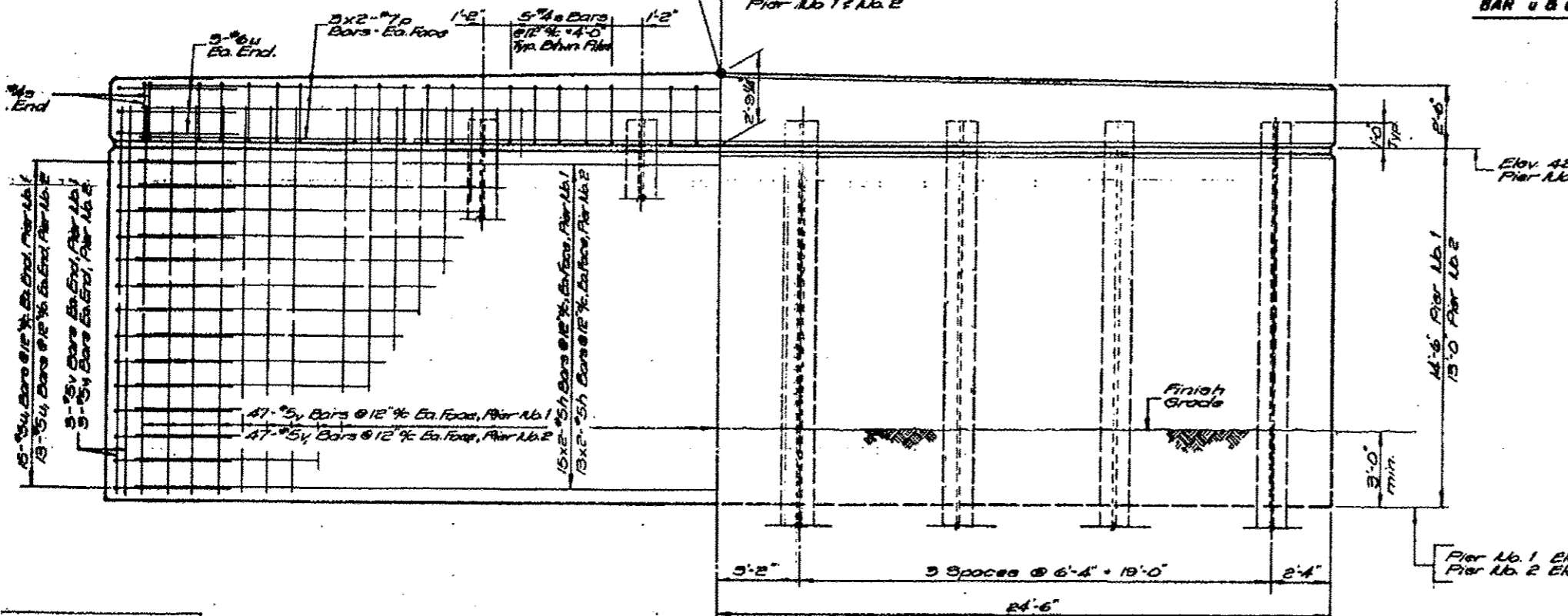
ROUTE NO.	SECTION	COUNTY	SHEET NO.	SHEET NO.
VALMEYER ROAD	78-00023-00-BR	MONROE	11	10



PLAN

FILE DATA

	Pier No. 1	Pier No. 2
Type	Steel HP10x12	Steel HP10x12
Length	75 Ft.	75 Ft.
Locality	Drive to refusal	Drive to refusal
Number of Piles	0	7



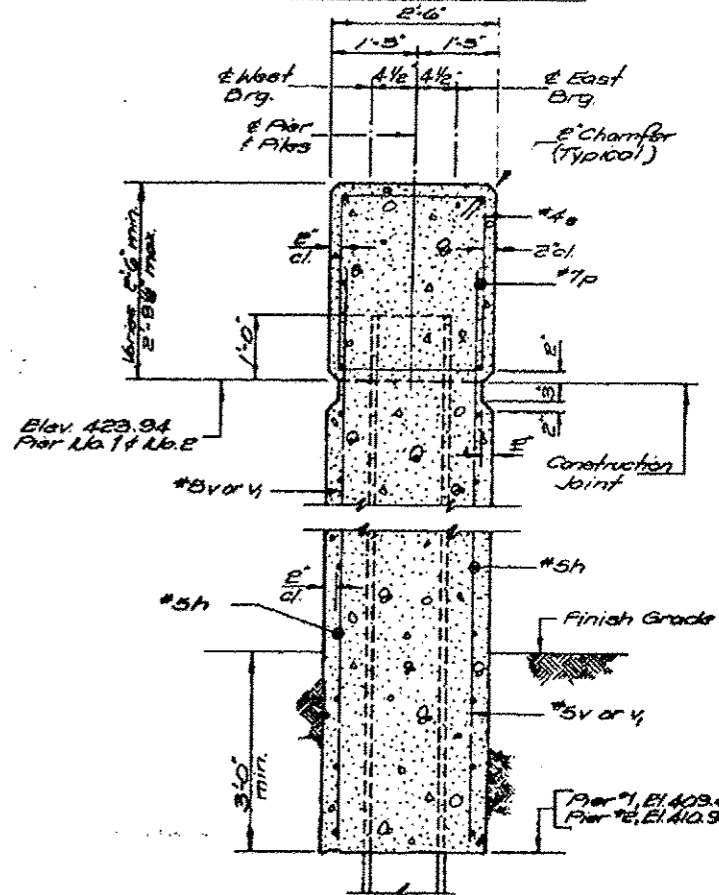
ELEVATION

DESIGNED: K.L.F.
 CHECKED:
 DRAWN: R.A.W.
 CHECKED: K.L.F.

NOTE: Bars indicated thus 15 x 2 - #5 etc., indicates 15 lines of bars with 2 lengths per line.

TABLE OF REINFORCEMENT BAR SPLICE LENGTHS

Bar	Size	Splice Length
h	#5	1'-3"
p	#7	4'-6"



SECTION A-A

PIER NO. 1 & NO. 2 BILL OF MATERIAL

Bar	No.	Size	Length	Shape
h	112	#5	24'-0"	—
p	84	#7	25'-6"	—
q	78	#4	9'-6"	□
u	12	#6	10'-10"	—
u ₁	56	#5	10'-10"	—
v	100	#5	15'-6"	—
v ₁	100	#5	14'-0"	—

Glass & Concrete	cu. Yds.	1470
Reinforcement Bars	Lbs.	8450
Steel Piles HP10x12	Lin. Ft.	1125
Driving Steel Piles HP10x12	Lin. Ft.	1125
Test Pile, Steel HP10x12	Each	1

Bill of Material includes quantities for both Pier No. 1 & Pier No. 2

PIER NO. 1 & NO. 2
VALMEYER ROAD OVER CARR CREEK
SECTION 78 - 00023-00-BR
CITY OF COLUMBIA

FILE NAME: PATRICKA.L.COOD - DWG-43-STV-0676002-97524-011-Existing Plans (Sheet 10).dgn

THOUVENOT, WADE & MOERCHEN, INC.
 SWANSEA • WATERLOO • EDWARDSVILLE • ST. LOUIS • ST. CHARLES

USER NAME: r.joyant	DESIGNED: -	REVISED: -
PLOT SCALE: 0.2, 0.000 1" = 10'	CHECKED: -	REVISED: -
PLOT DATE: 3/12/2013	DRAWN: -	REVISED: -
	CHECKED: -	REVISED: -

STATE OF ILLINOIS
 DEPARTMENT OF TRANSPORTATION

EXISTING BRIDGE PLANS - FOR INFORMATION ONLY
 STRUCTURE NO. 067-6002
 SHEET NO. 11 OF 12 SHEETS

F.A.U. RTE. 9304	SECTION 12-00023-01-BR	COUNTY MONROE	TOTAL SHEETS 16	SHEET NO. 15
ROAD DIST. NO.		ILLINOIS FED. AID PROJECT		