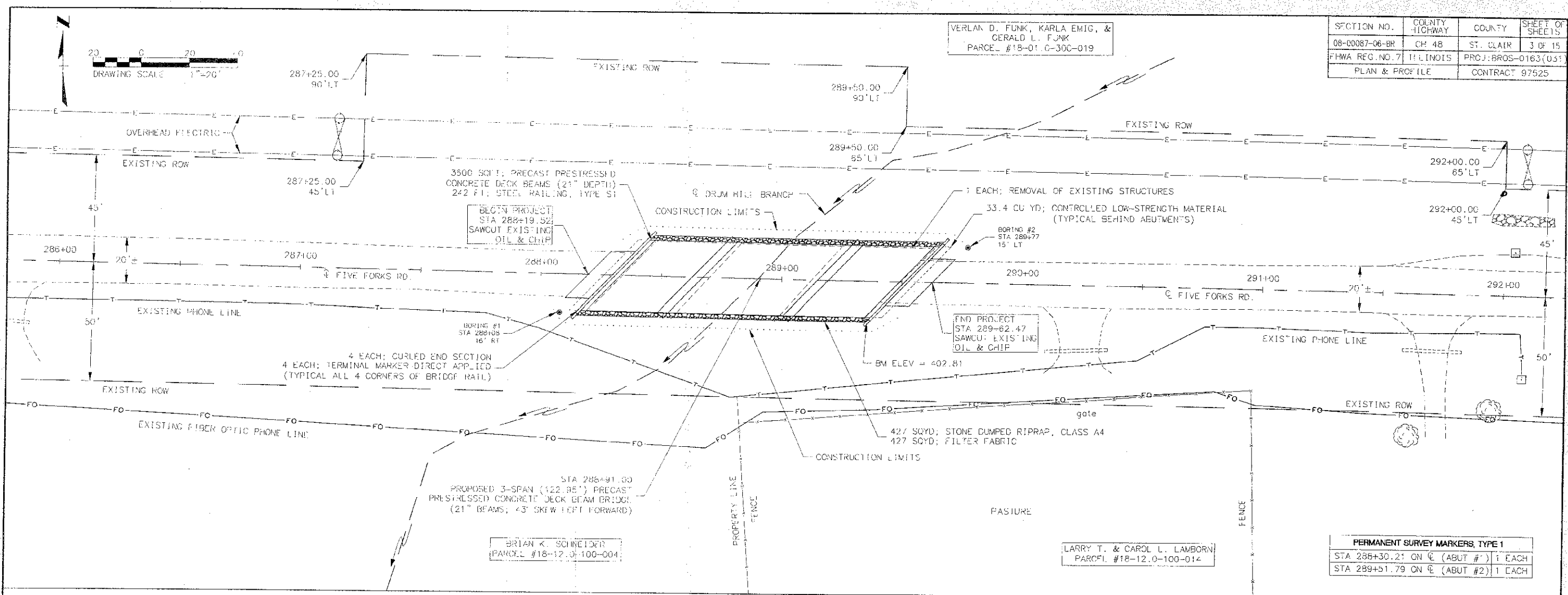


SECTION NO.	COUNTY HIGHWAY	COUNTY	SHEET OF SHEETS
08-0087-06-BR	CH 48	ST. CLAIR	3 OF 15
FHWA REG. NO. 7 ILLINOIS		PROJ: BROS-0163(05)	
PLAN & PROFILE		CONTRACT 97525	

VERLAN D. FUNK, KARLA EMIG, &
GERALD L. FUNK
PARCEL #18-01-C-300-019

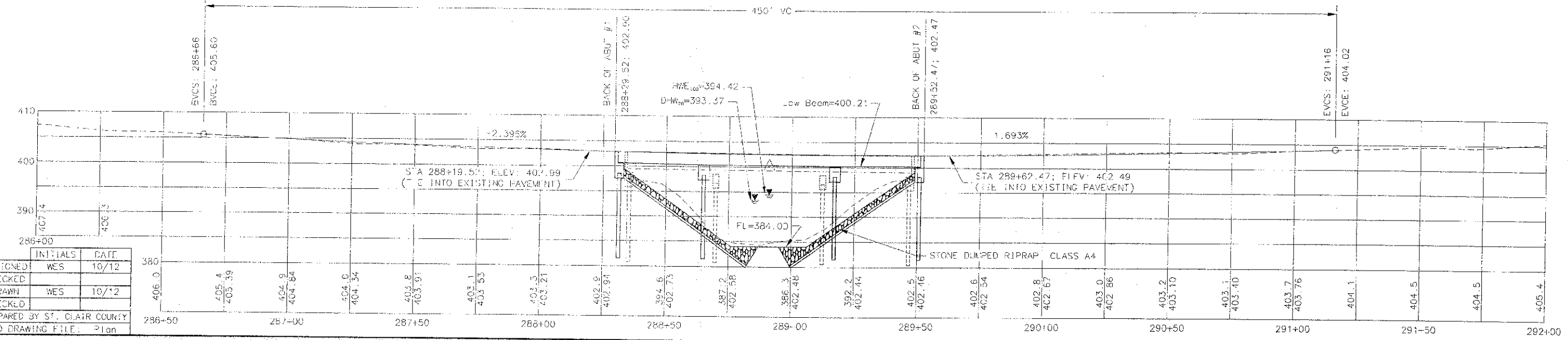


PROFILE SCALE: VERTICAL: 1"=10'
HORIZONTAL: 1"=20'

BM: CHISELED SQUARE IN THE S.E. WINDOW
STA 289+32.15, 18.15' RT
ELEV = 402.81

BM: RR SPIKE IN POWERPOLE
STA 287+13.88, 47.08' LT
ELEV = 406.54

PVI STA = 289+91.00
PVI ELEV = 400.21
A.D. = 4.089
K = 110.05



PLOT DATE: 4/7/13

INITIALS	DATE
DESIGNED: WES	10/12
CHECKED:	
DRAWN: WES	10/12
CHECKED:	

PREPARED BY ST. CLAIR COUNTY
CADD DRAWING FILE: Plan

PERMANENT SURVEY MARKERS, TYPE 1
STA 288+30.21 ON C (ABUT #1) 1 EACH
STA 289+51.79 ON C (ABUT #2) 1 EACH