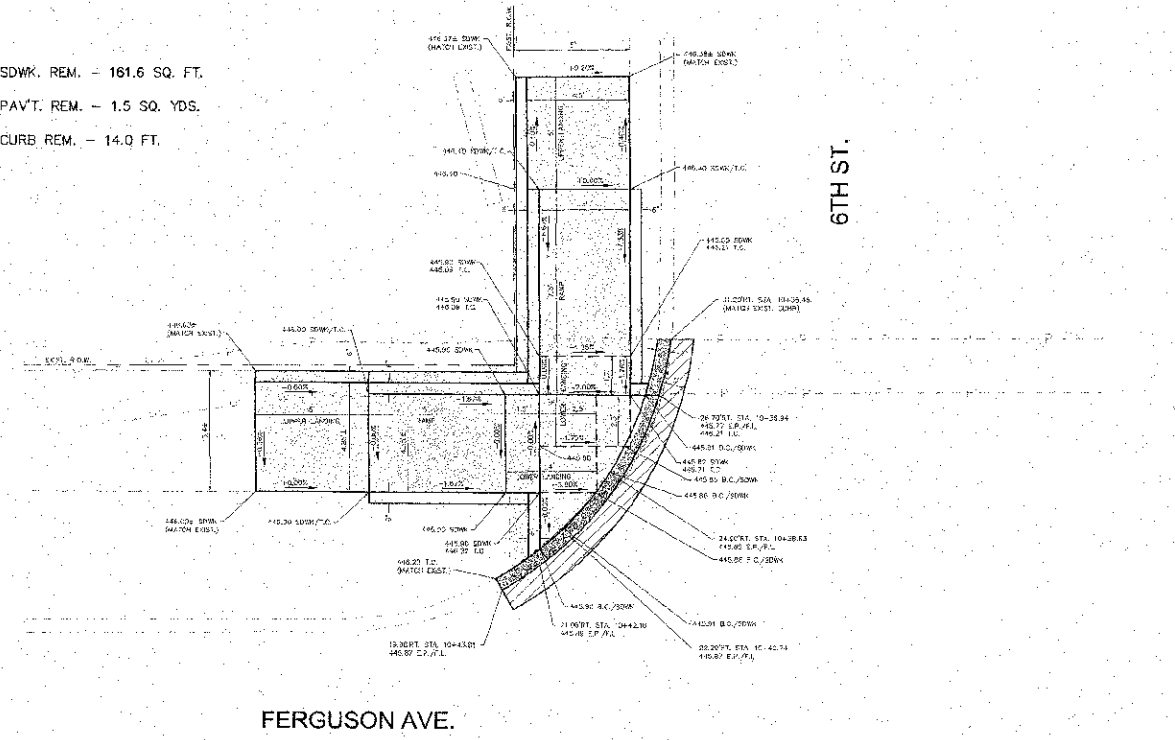


F.A.U. RTE.	SECTION	COUNTY	TOTAL SHEETS	SHEET NO.
8971	10-00047-02-RS	MADISON	45	13

CONTRACT NO. 97526

- PROP. SDWK. REM. - 161.6 SQ. FT.
- PROP. PAVT. REM. - 1.5 SQ. YDS.
- PROP. CURB REM. - 14.0 FT.



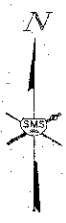
FERGUSON AVE.

6TH ST.

REMOVAL PLAN SHEETS 13-18:  
FOR DIMENSIONS, SLOPES, STA./OFFSETS AND ELEVATIONS  
SEE INTERSECTION DETAILS, SHEETS 20-41

6TH ST. NW. QUAD

SCALE IN FEET



H.M.A. SURF. REM., 2" ENDS  
41.53' RT., STA. 10+00.86  
6TH STREET

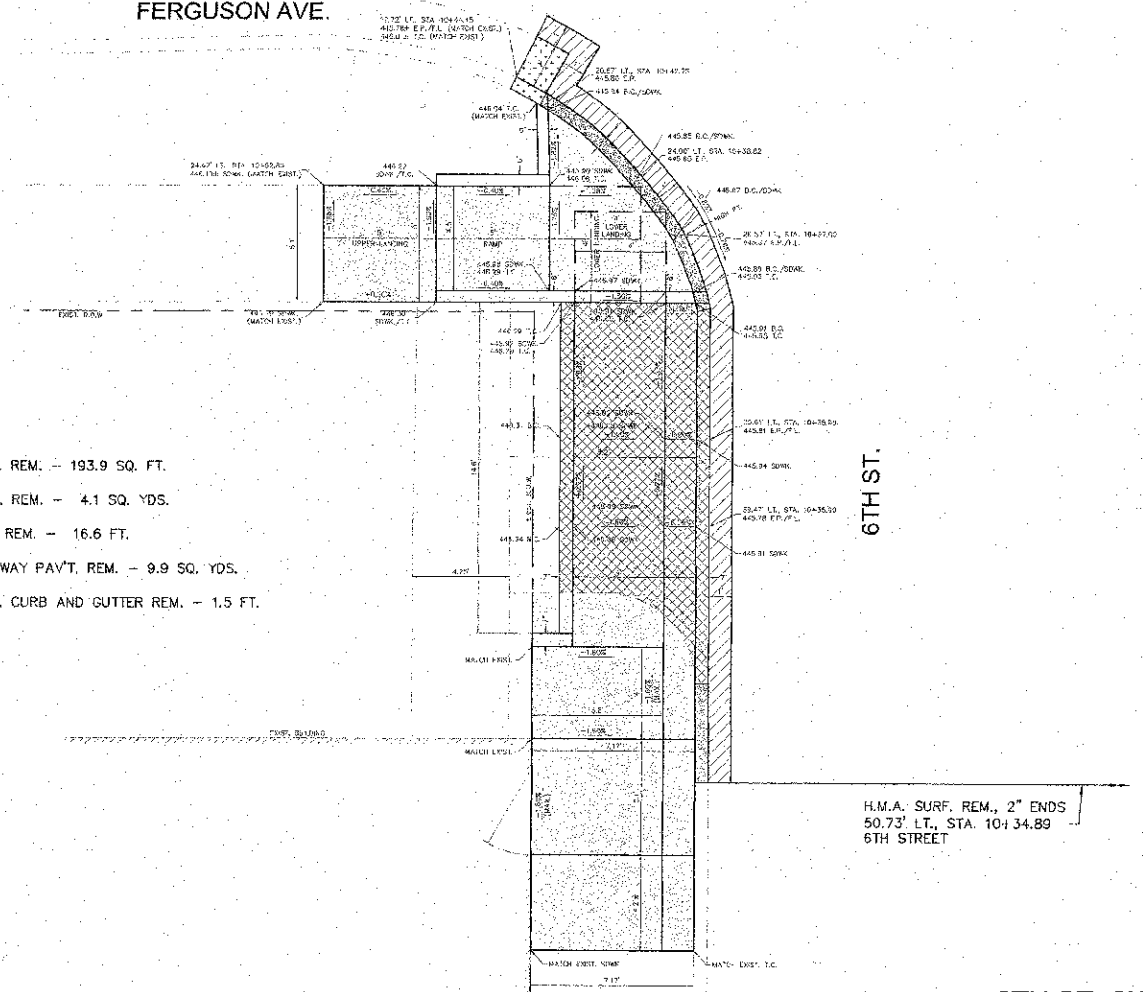
- PROP. SDWK. REM. - 132.2 SQ. FT.
- PROP. PAVT. REM. - 3.1 SQ. YDS.
- PROP. CURB REM. - 21.3 FT.
- PROP. DRIVEWAY PAVT. REM. - 4.0 SQ. YDS.

6TH ST.

FERGUSON AVE.

6TH ST. NE. QUAD

FERGUSON AVE.

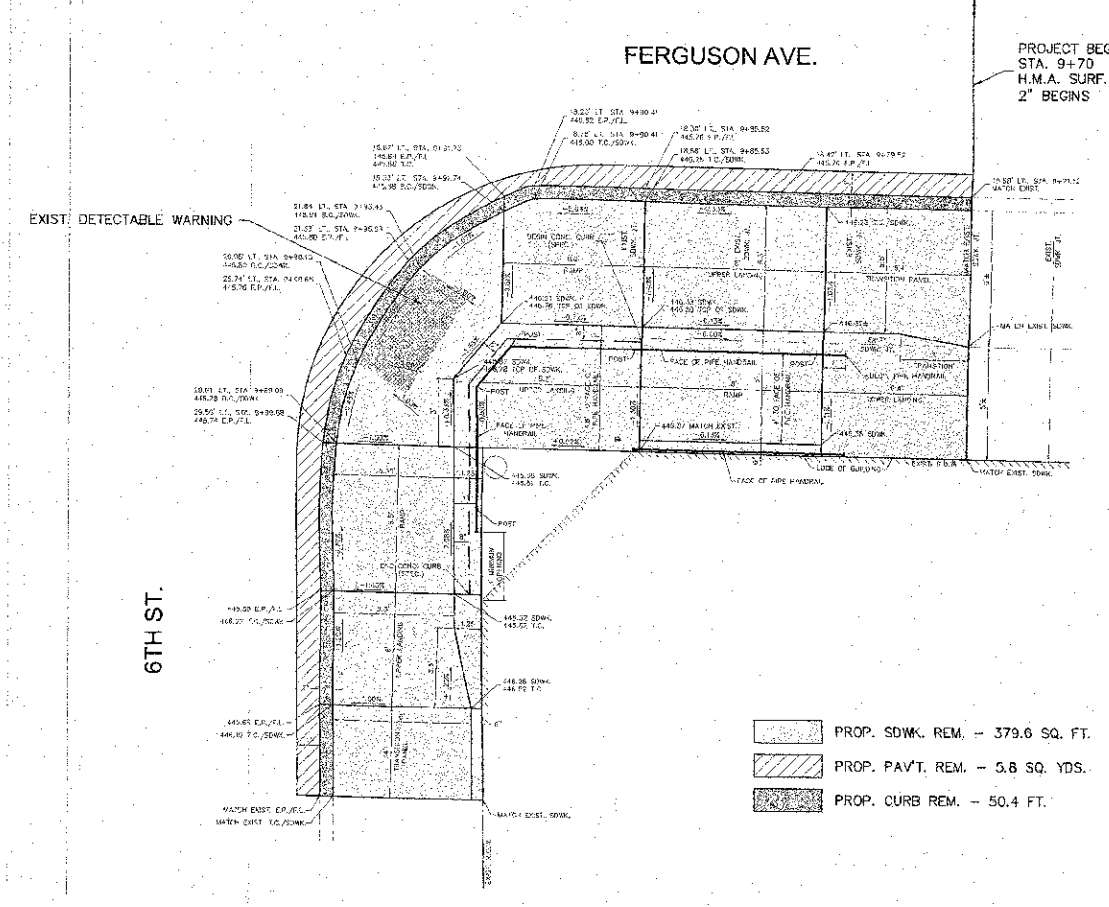


6TH ST.

H.M.A. SURF. REM., 2" ENDS  
50.73' LT., STA. 10+34.89  
6TH STREET

6TH ST. SW. QUAD

FERGUSON AVE.



6TH ST.

PROJECT BEGINS  
STA. 9+70  
H.M.A. SURF. REM.,  
2" BEGINS

- PROP. SDWK. REM. - 379.6 SQ. FT.
- PROP. PAVT. REM. - 5.8 SQ. YDS.
- PROP. CURB REM. - 50.4 FT.

6TH ST. SE. QUAD

REVISIONS

Sheppard, Morgan & Schwaab, Inc.  
CONSULTING ENGINEERS AND LAND SURVEYORS  
245 Market Street, P.O. Box E, Alton, IL 62002 618-452-0755 E-mail: [sm&s@sm&sinc.com](mailto:sm&s@sm&sinc.com)  
10 Central National Drive, Suite 3, Granite City, IL 62040 618-871-5700 E-mail: [central@sm&sinc.com](mailto:central@sm&sinc.com)  
DESIGN FIRM # 184-000992

CITY OF WOOD RIVER, ILLINOIS  
FERGUSON AVENUE RESURFACING  
SECTION 10-00047-02-RS  
REMOVAL PLAN

DWG. NO.	10-00047-02-RS
REF. BK.	488044
DATE	APRIL 2013

SCALE: 1" = 4'  
SHEET 13 OF 45

S:\Land Projects\WOOD RIVER PS (R88044)\FERGUSON HW RAMP\DWG\REMOVAL FERGLSON 6TH.dwg, 4/15/2013 8:33:21 AM jfman, 14