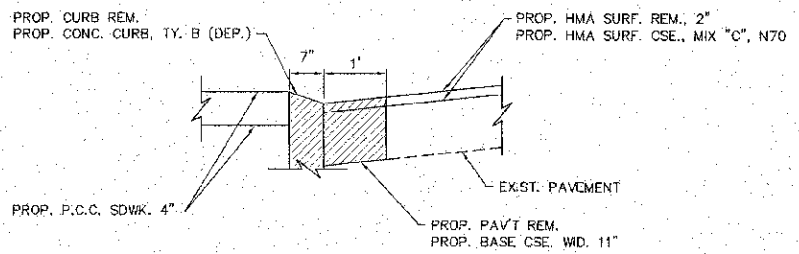
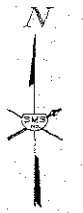
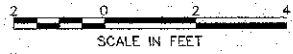
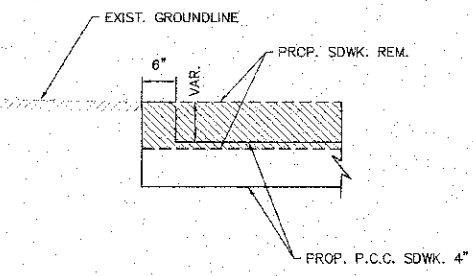


F.A.U. RTE.	SECTION	COUNTY	TOTAL SHEETS	SHEET NO.
8971	10-00047-02-RS	MADISON	45	41

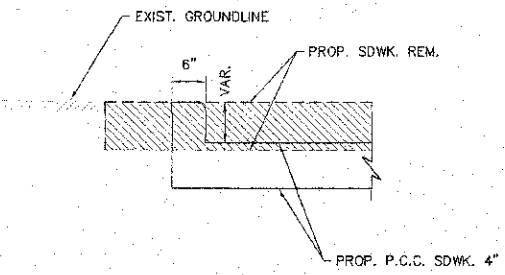
CONTRACT NO. 97526



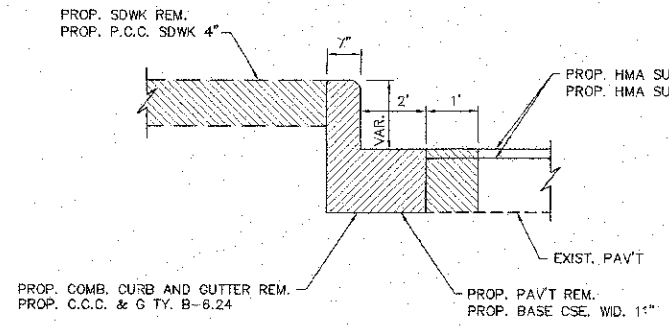
SECTION A - A



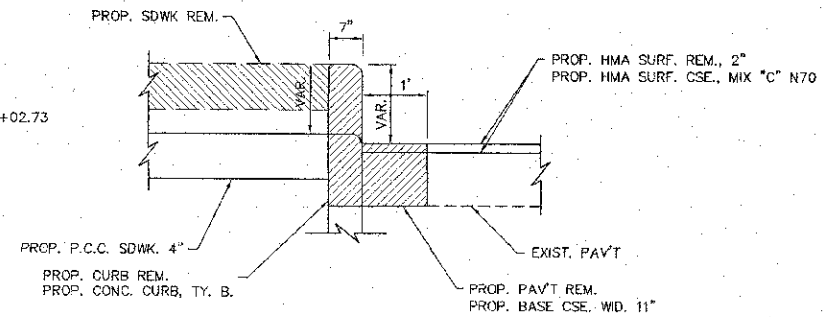
SECTION B - B



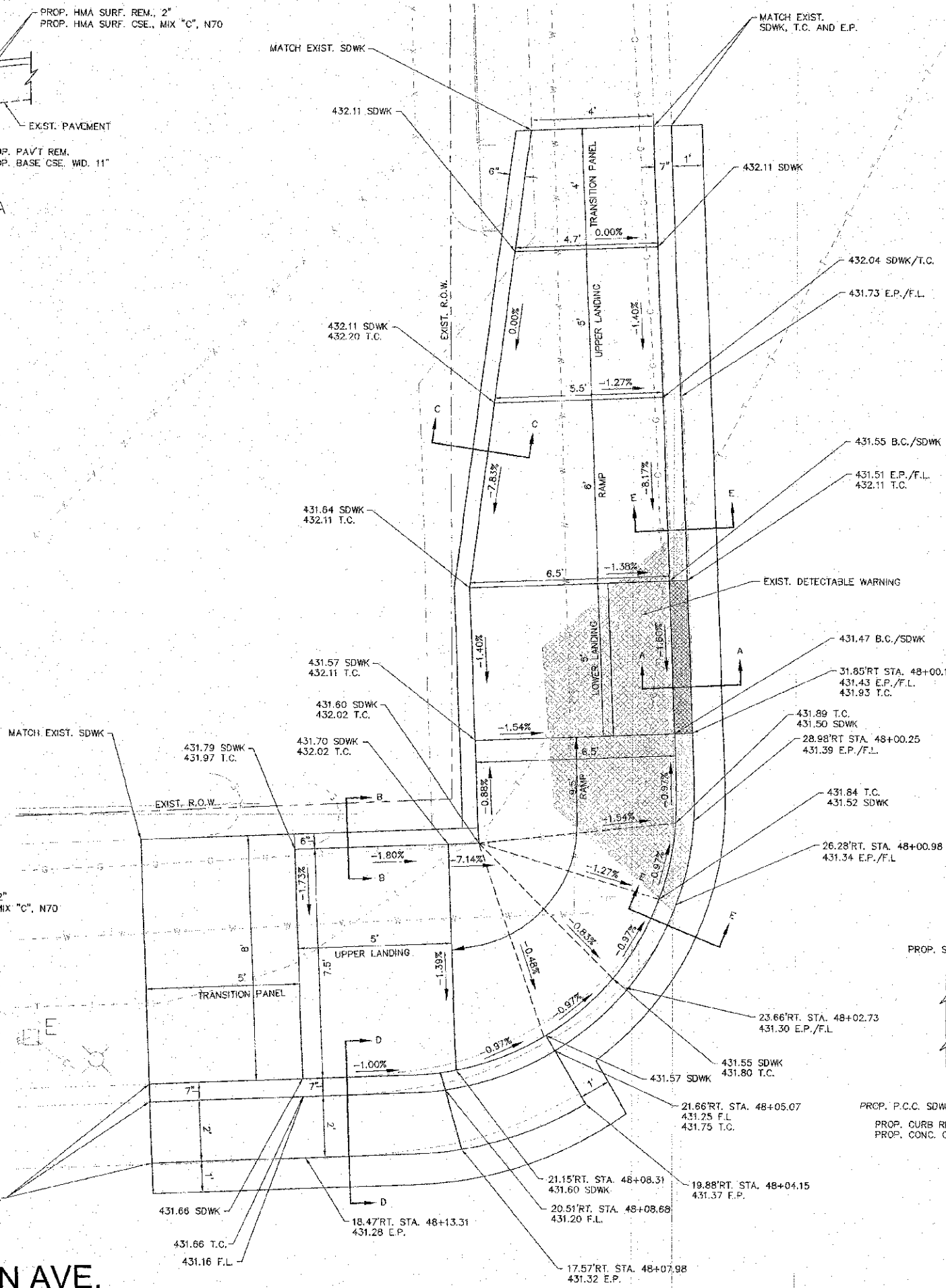
SECTION C - C



SECTION D - D



SECTION E - E



FERGUSON AVE.

HALLER ST.

SEE PLAN SHEET FOR LOCATION OF DETECTABLE WARNING

REVISIONS

**SMS ENGINEERS**  
**Sheppard, Morgan & Schwaab, Inc.**  
 CONSULTING ENGINEERS AND LAND SURVEYORS  
 215 Naval Street, P.O. Box E, Alton, IL 62002, 618462-9755, F. mail: sm@smse.com  
 10 Central Industrial Drive, Suite 3, Granite City, IL 62040, 618677-9202, E. mail: nsl@smse.com  
 DESIGN FIRM # 184-000992

CITY OF WOOD RIVER, ILLINOIS  
 FERGUSON AVENUE RESURFACING  
 SECTION 10-00047-02-RS  
 INTERSECTION DETAILS

DWG. NO.	10-00047-02-RS-41
BY	LD
CHK.	LD
DATE	APRIL 2013

SCALE: NOT TO SCALE  
 SHEET 41 OF 45

HALLER ST. NW. QUAD

S:\land\Projects\WOOD RIVER PS 488D4\FERGUSON-HC 3AMP\Sub\WINT DET FERGUSON\_HALLER.dwg, 4/15/2013 9:10:34 AM, jman, 1:2