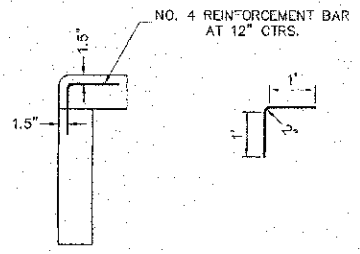
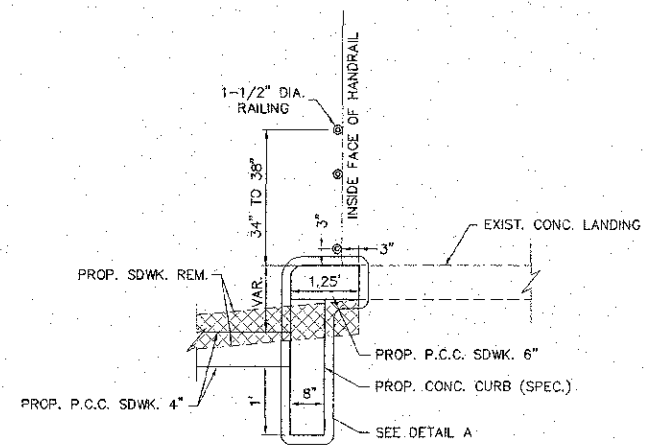
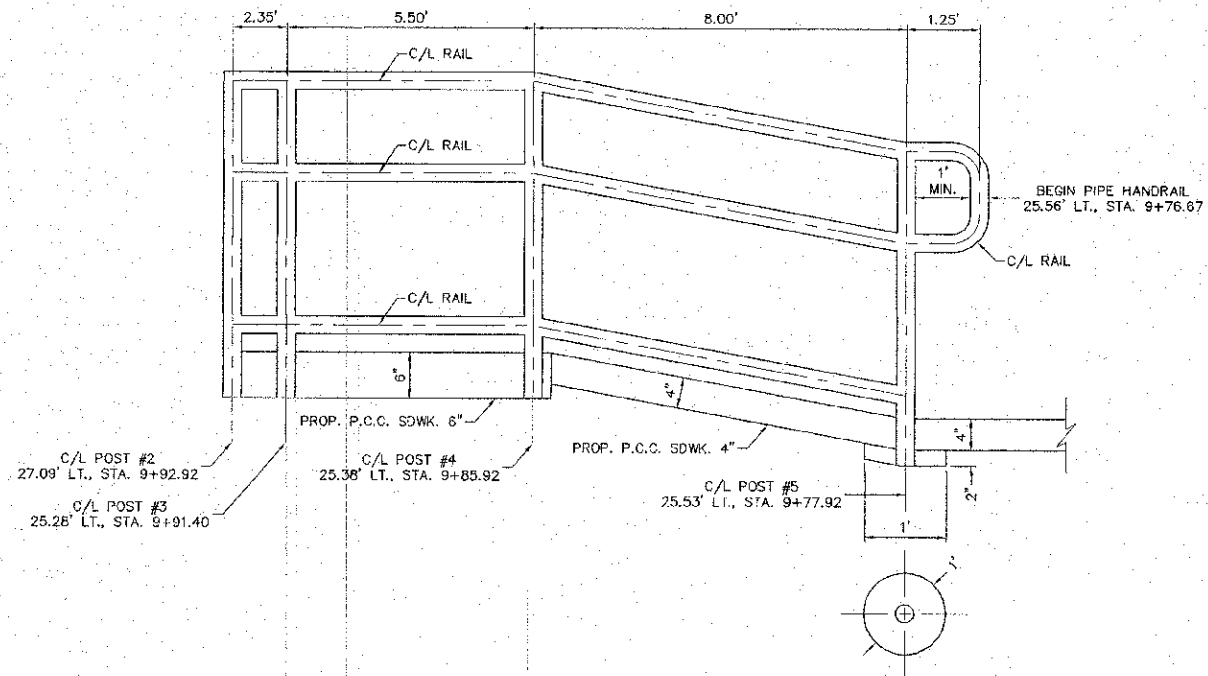
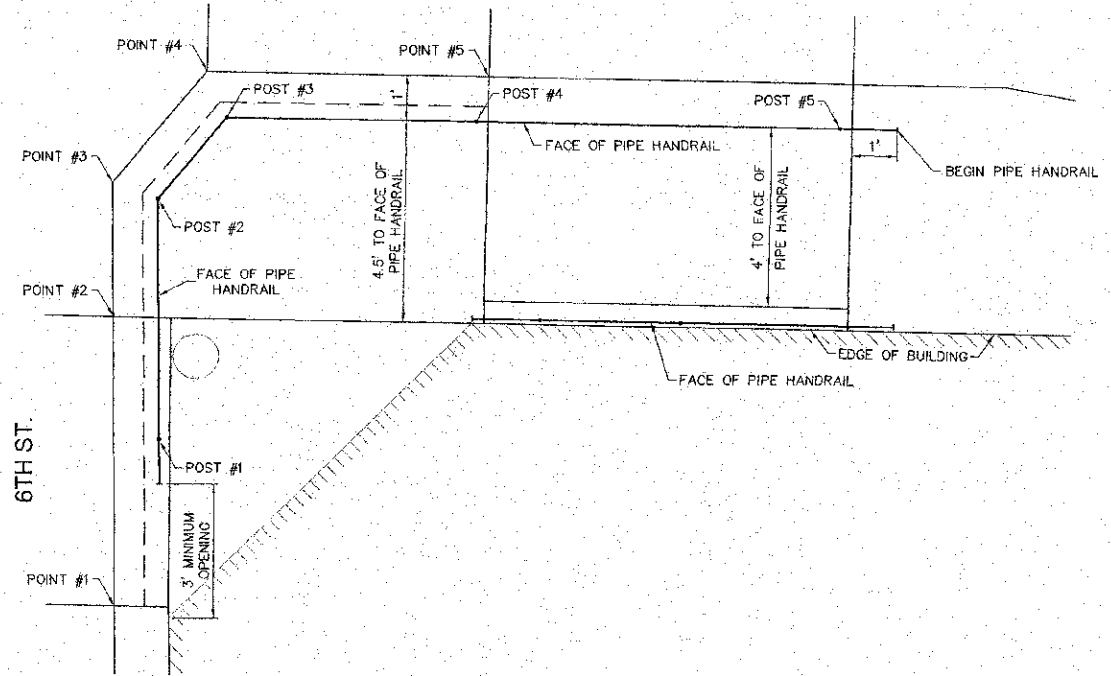


FERGUSON AVE.

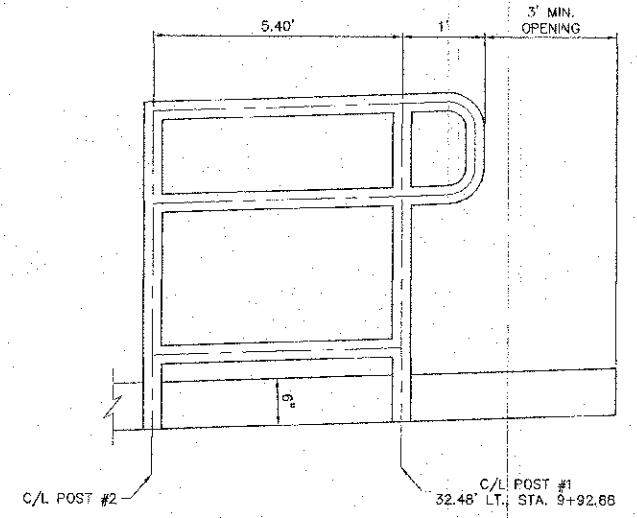


SECTION G - G
PROP. CONC. CURB (SPEC.)
NOT TO SCALE

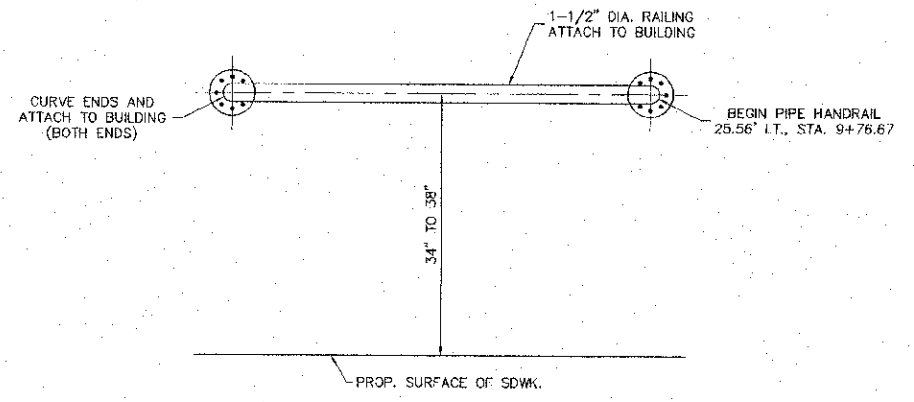
POINT	STATION	OFFSET	HEIGHT OF CURB
1	9+93.85	36.22'	1.25'
2	9+93.90	29.73'	1.78'
3	9+93.92	28.73'	1.74'
4	9+91.84	24.25'	1.68'
5	9+85.64	24.38'	1.30'

NOTES:

- PROP. SDWK. SHALL BE CORE DRILLED TO SET POSTS. NON SHRINK GROUT SHALL BE PLACED IN HOLES AROUND ALL POSTS.
- REINFORCEMENT BARS SHALL NOT BE PAID FOR SEPERATELY BUT SHALL BE INCLUDED IN THE COST OF CONC. CURB (SPEC.).



DETAIL: PIPE HANDRAIL AND CONCRETE CURB (SPECIAL)
NOT TO SCALE



REVISIONS

SMS ENGINEERS
Sheppard, Morgan & Schwaab, Inc.
CONSULTING ENGINEERS AND LAND SURVEYORS
215 Marka Street, P.O. Box E, Alton, IL 62002. 618462-9755. E-mail: mail@smsengineers.com
10 Central Industrial Drive, Suite 3, Granite City, IL 62040. 618677-6100. E-mail: ms@smsengineers.com
DESIGN FIRM # 154-000992

CITY OF WOOD RIVER, ILLINOIS
FERGUSON AVENUE RESURFACING
SECTION 10-00047-02-RS
CONSTRUCTION DETAILS