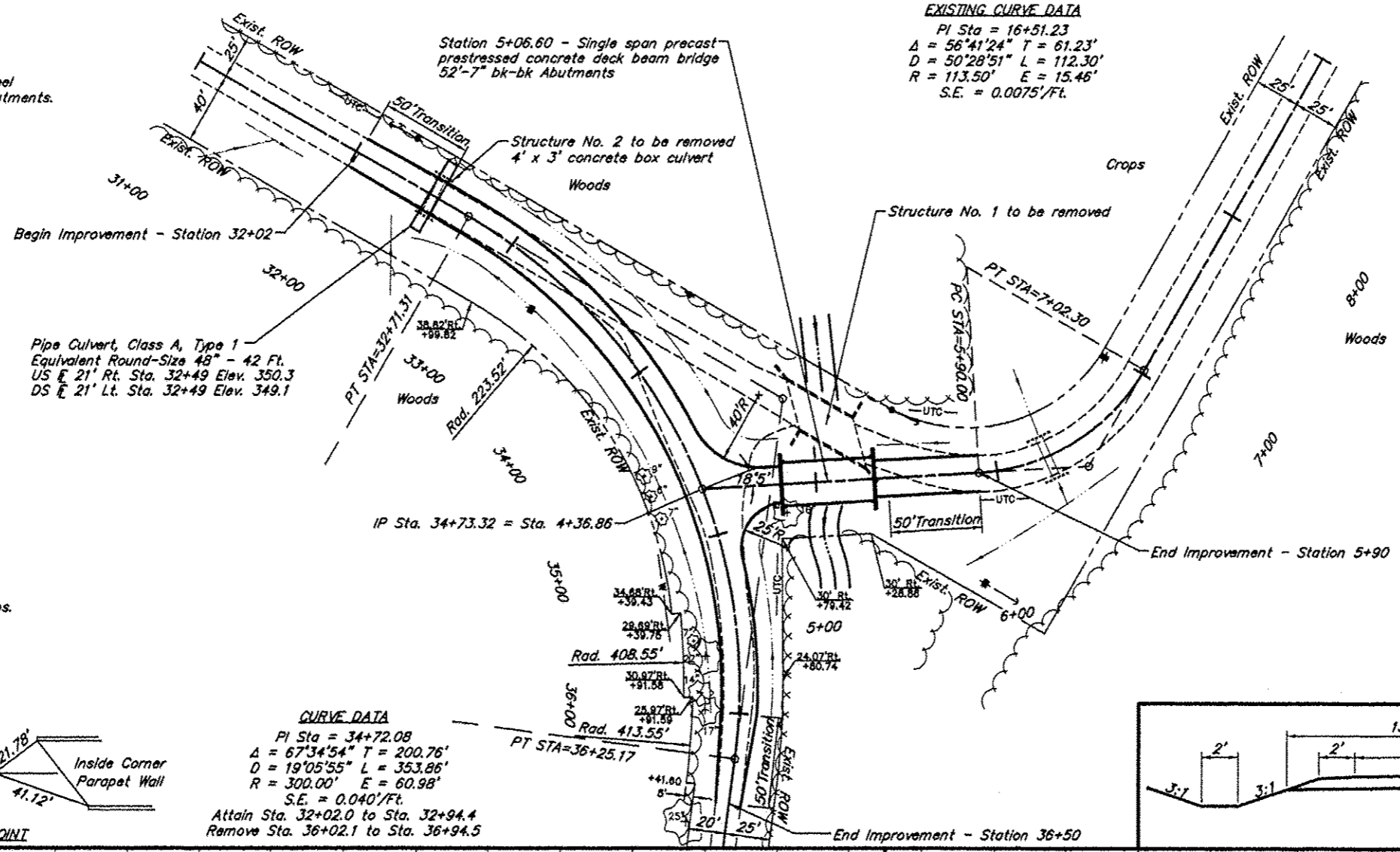


ROUTE	SECTION	COUNTY	TOTAL SHEETS	SHEET NO.
TR 239	06-06117-00-BR	SALINE	14	2
PROJECT NO. BROS-165(30)			CONTRACT NO. 99488	

B.M. - RR Spike in TP
37' Lt. Sta. 5+44
Elev. 357.00

Structure No. 1 - Concrete deck on steel stringers with closed concrete abutments.
21.7' Wide x 42.8' Long.

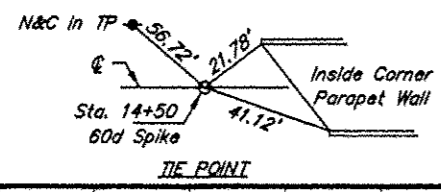
EXISTING CURVE DATA
PI Sta = 16+51.23
 $\Delta = 56^\circ 41' 24''$ T = 61.23'
D = 50' 28' 51" L = 112.30'
R = 113.50' E = 15.46'
S.E. = 0.0075'/ft.



Tree Removal

Sta.	Offset	Unit Dia.
34+53	24' Rt.	9
34+66	28' Rt.	6
34+81	27' Rt.	7
35+58	24' Rt.	7
35+65	18' Rt.	22
35+89	22' Rt.	14
35+97	17' Rt.	17
4+83	16' Rt.	16

Note: All trees listed are stumps.



SCALES:
1" = 80' HOR
1" = 10' VER

CURVE DATA
PI Sta = 34+72.08
 $\Delta = 67^\circ 34' 54''$ T = 200.76'
D = 19' 05' 55" L = 353.86'
R = 300.00' E = 60.98'
S.E. = 0.040'/ft.
Attain Sta. 32+02.0 to Sta. 32+94.4
Remove Sta. 36+02.1 to Sta. 36+94.5

