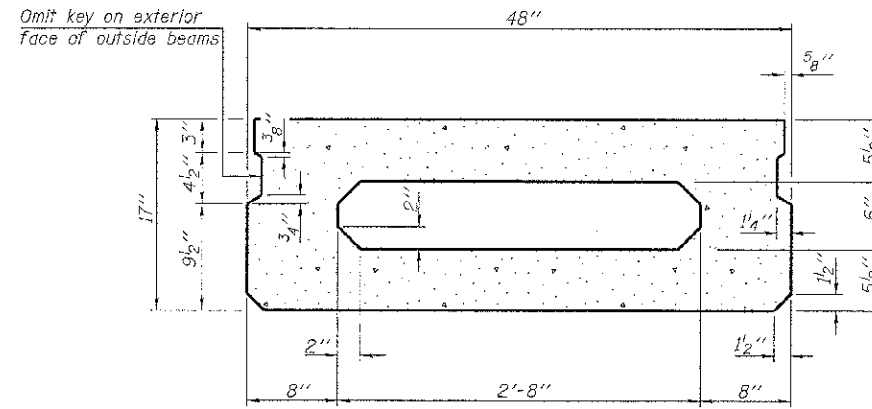
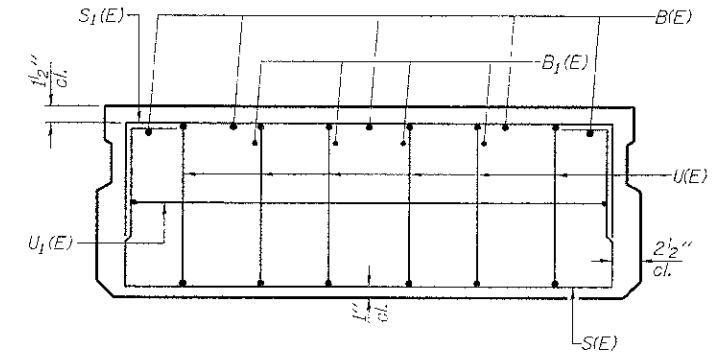


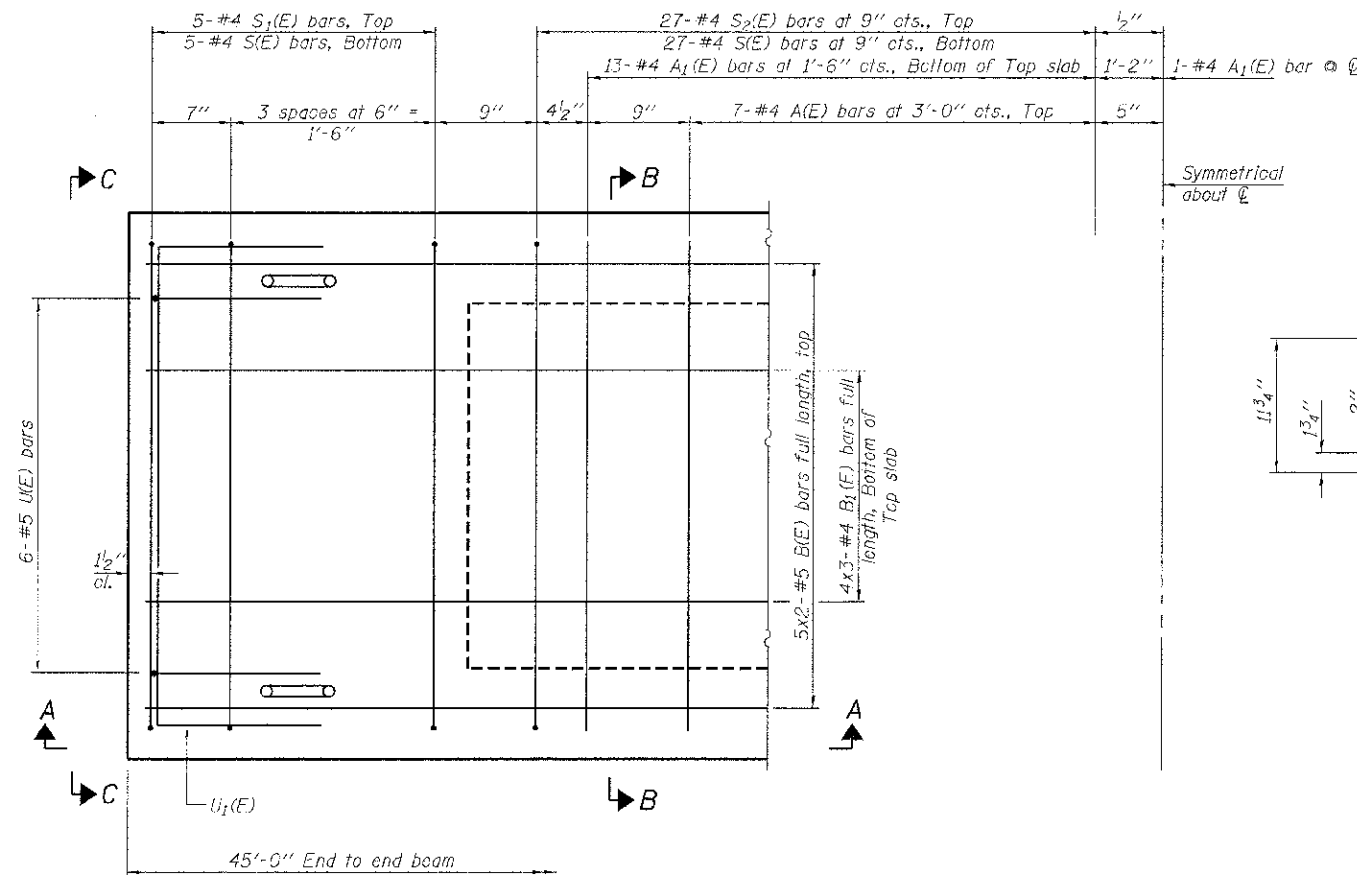
SECTION A-A



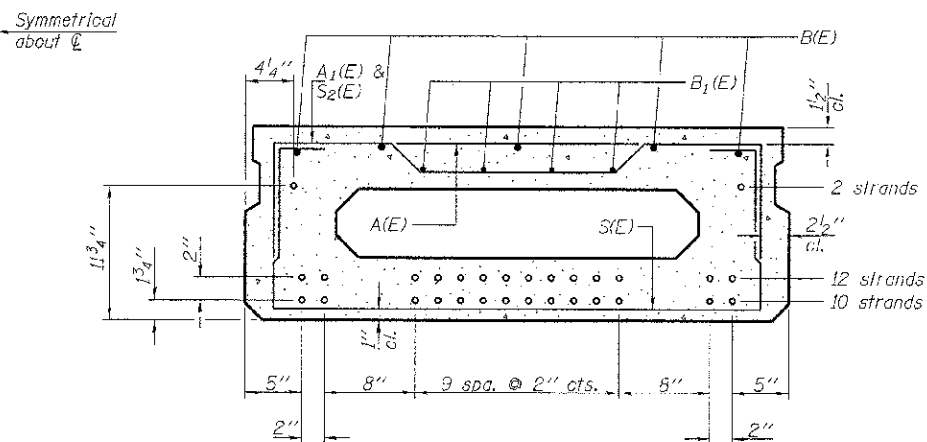
SECTION B-B  
(Showing dimensions)



VIEW C-C



PLAN VIEW



SECTION B-B  
(Showing reinforcement and permissible strand locations)

Note: Place the number of strands specified in each row symmetrical about the centerline of beam in the permissible strand locations shown.

**BAR LIST**  
**ONE BEAM ONLY**  
(For information only)

Bar	No.	Size	Length	Shape
A(E)	14	#4	3'-7"	—
A1(E)	27	#4	3'-10"	—
B(E)	10	#5	23'-8"	—
B1(E)	12	#4	16'-3"	—
S(E)	64	#4	6'-9"	—
S1(E)	10	#4	5'-3"	—
S2(E)	54	#4	5'-6"	—
U(E)	12	#5	3'-8"	—
U1(E)	2	#4	6'-0"	—

Note: See sheet 3 of 9 for additional details and Bill of Material.

**MINIMUM BAR LAP**

#4 bar = 2'-0"  
#5 bar = 2'-6"

Notes:  
Spacing of S(E) and S2(E) bars may be adjusted up to 4" in the immediate area of the transverse tie diaphragms to miss the block cuts for the transverse ties.  
Bars indicated thus 5x2-#5 etc. indicates 5 lines of bars with 2 lengths per line.

PD-1748-0

7-1-10

FILE NAME = 128223-sh2-br-dgn	USER NAME =	DESIGNED - L.A.P.	REVISED -	<b>STATE OF ILLINOIS UNION COUNTY HIGHWAY DEPARTMENT</b>	<b>17" x 48" PPC DECK BEAM STRUCTURE NO. 091-3241</b>	T.R.	SECTION	COUNTY	TOTAL SHEETS	SHEET NO.	
HAMPTON, LENZINI AND RENWICK, INC. 3001 STEVENSON DRIVE, SUITE 201 SPRINGFIELD, ILLINOIS 62709	PLOT SCALE =	CHECKED - S.W.M.	REVISED			239	11-01201-0C-BR	UNION	20	13	
PLotted by: [Signature]	PLOT DATE = 3/19/2013	DRAWN - R.D.H.	REVISED -			COUNTY UNIT ROAD DISTRICT	CONTRACT NO. 99503				
ILLINOIS PROFESSIONAL ENGINEERING BOARD 11/97 ISE CCOP, 284.002625		CHECKED - S.W.M.	REVISED -			SHEET NO. 2 OF 9 SHEETS		ILLINOIS FED. AID PROJECT BRGS-01810581			