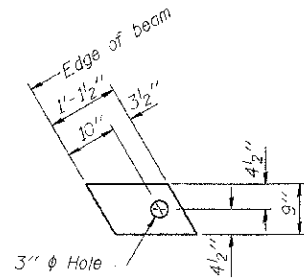


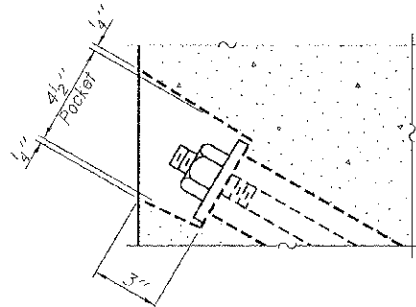
FABRIC BEARING PAD
(Interior - 20 Req'd.)



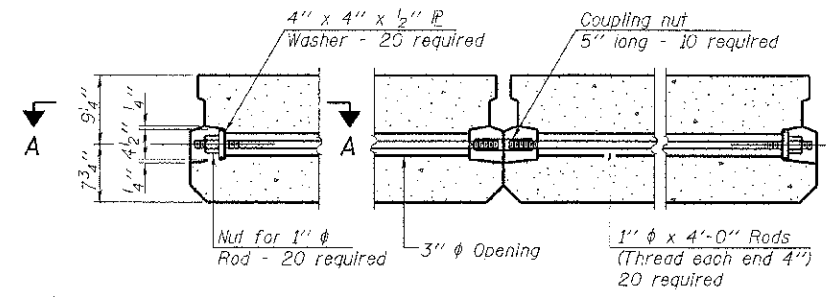
FABRIC BEARING PAD
(Exterior - 8 Req'd.)

FIXED

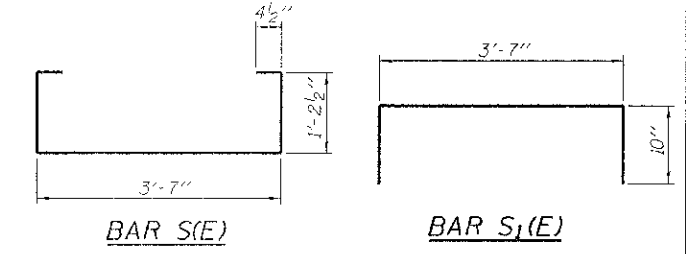
Notes:
All bearing pads shall be 1" thick.
Omit holes when using expansion bearings.
Expansion bearing pad shall be bonded to the substructure.



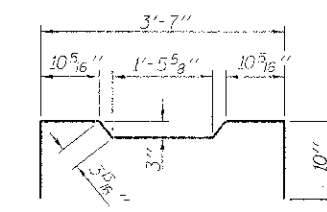
SECTION A-A



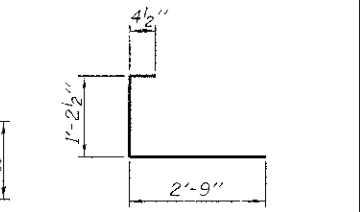
TYPICAL TRANSVERSE TIE ASSEMBLY



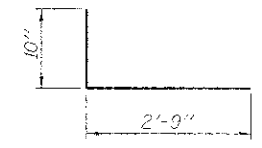
BAR S1(E)



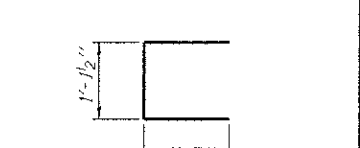
BAR S2(E)



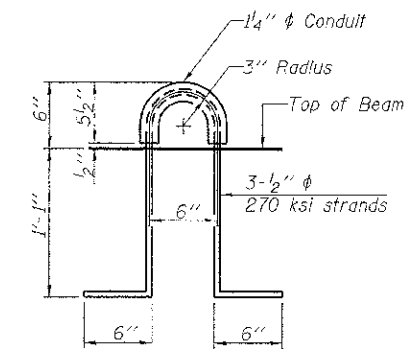
BAR S3(E)



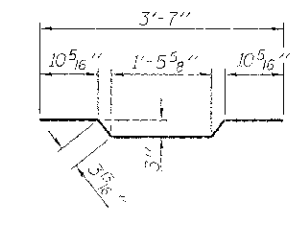
BAR S4(E)



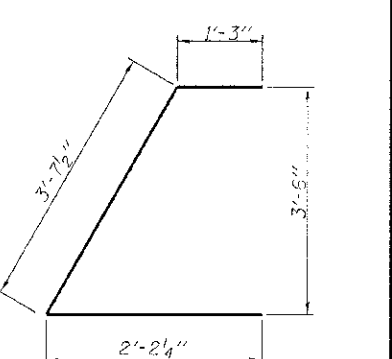
BAR U(E)



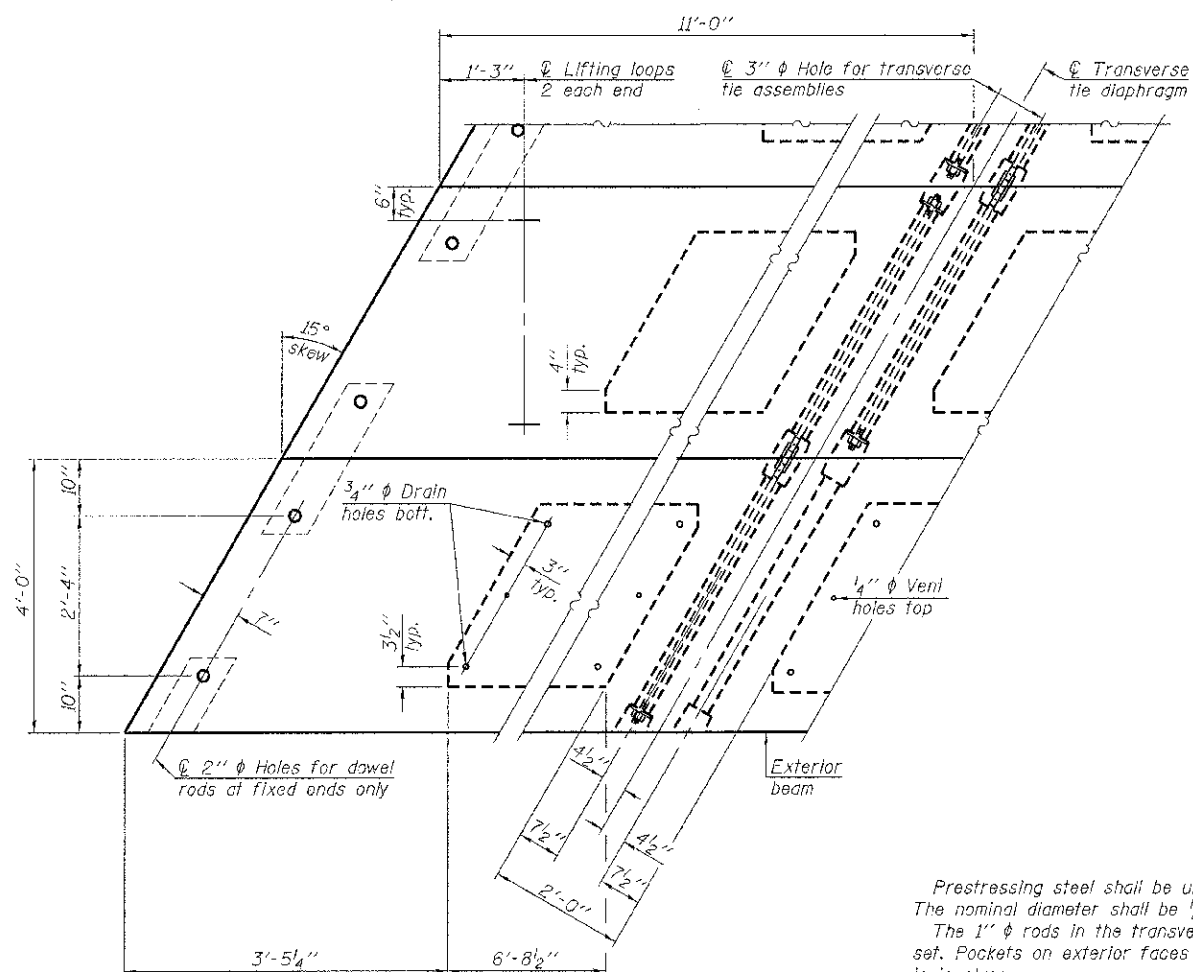
LIFTING LOOP DETAIL



BAR A1(E)



BAR U1(E)



PLAN VIEW

Note: Connect beams in pairs with the transverse tie configuration shown.

NOTES

- Prestressing steel shall be uncoated high strength, low relaxation 7-wire strand, Grade 270. The nominal diameter shall be 1/2" and the nominal cross-sectional area shall be 0.153 sq. in.
- The 1" rods in the transverse tie assembly shall be tightened to a snug fit and the threads set. Pockets on exterior faces of bridge shall be filled with grout after transverse tie assembly is in place.
- Reinforcement bars shall conform to ASTM A 706, Grade 60. (See Special Provisions).
- Two 1/8" fabric adjusting shims of the dimensions of the exterior bearing pad shall be provided for each bearing pad location.
- A minimum 2 1/2" diameter lifting pin shall be used to engage the lifting loops during handling.
- Corrosion Inhibitor, per Article 1020.05(b)(12) and 1021.07 of the Standard Specifications, shall be used in the concrete for precast prestressed concrete deck beams.
- Compressive strength of prestressed concrete, f'c, shall be 6000 psi.
- Compressive strength of prestressed concrete at release, f'ci, shall be 5000 psi.
- All reinforcement shall be epoxy coated.

BILL OF MATERIAL - SPANS 1 & 3

Precast Prestressed Conc. Deck Bms. (17" depth)	Sq. Ft.	1,056
---	---------	-------

PD-1748-LD

7-1-10

FILE NAME = 120135-shr-bn-dgw.dgn	USER NAME =	DESIGNED - L.A.P.	REVISED -	STATE OF ILLINOIS JEFFERSON COUNTY HIGHWAY DEPARTMENT	17" x 48" PPC DECK BEAM DETAILS - SPANS 1 & 3 STRUCTURE NO. 041-3749	T.P.	SECTION	COUNTY	TOTAL SHEETS	SHEET NO.
HAMPTON, LENZINI AND RENWICK, INC. 2008 STEVENSON DRIVE, SUITE 201 SPRINGFIELD, ILLINOIS 62703	PLOT SCALE =	CHECKED - S.W.M.	REVISED -			123	09-07106-00-BR	JEFFERSON	23	15
ILLINOIS PROFESSIONAL DESIGNER #1-03 157 P&J SE CORP. 194-00055	PLOT DATE = 2/14/2013	DRAWN - D.A.B.	REVISED -			FIELD ROAD DISTRICT		CONTRACT NO. 99504		
		CHECKED - S.W.M.	REVISED -			SHEET NO. 3 OF 11 SHEETS		ILLINOIS FED. AID PROJECT BROS-0081062		