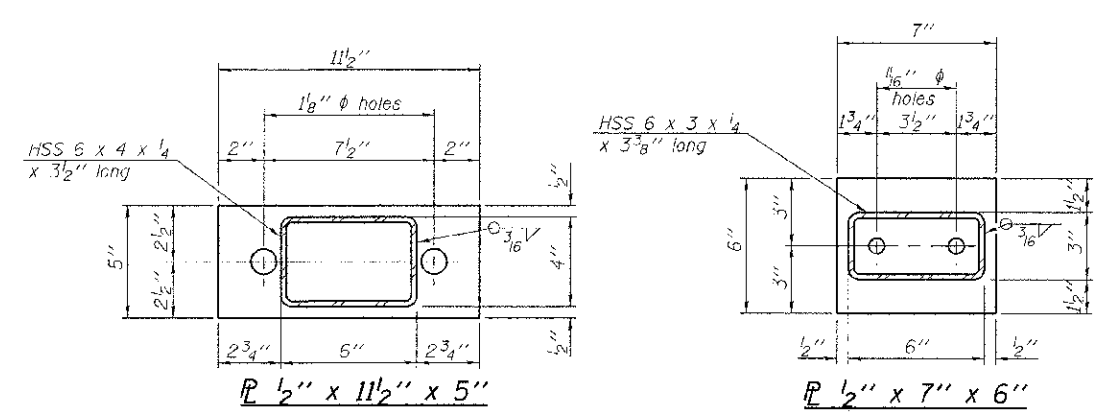
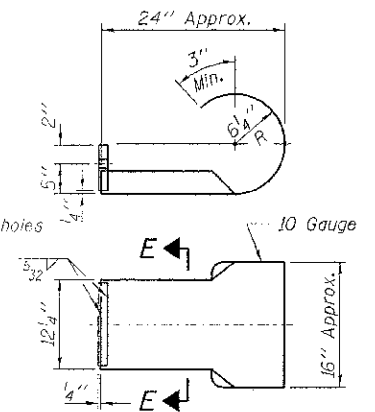
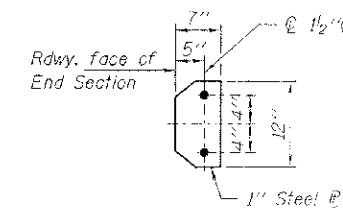


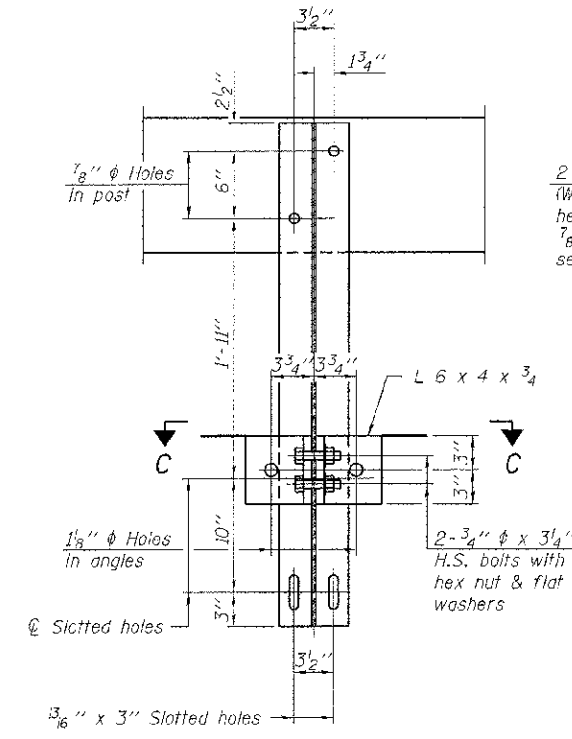
**VIEW A-A  
ROUND HEAD BOLT**



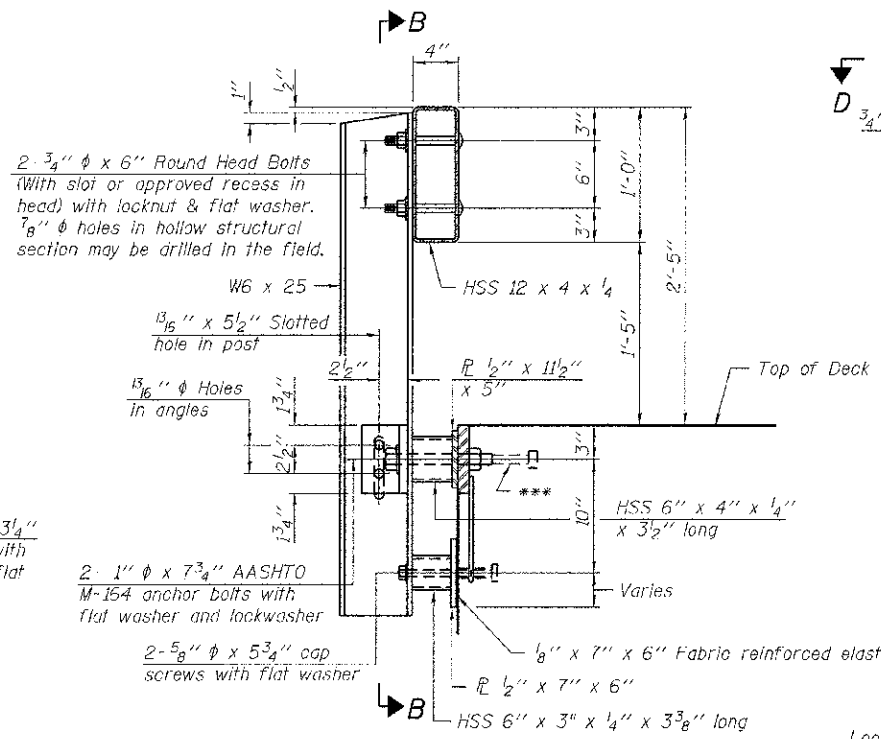
Note: Cost of curled end sections shall be included with the Steel Railing. (4 Required)



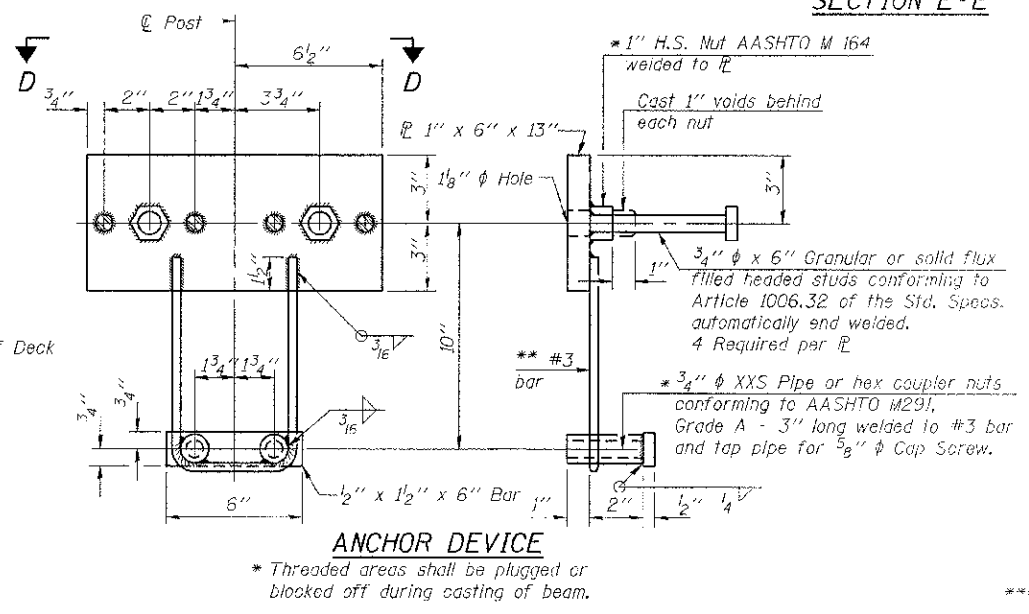
**SECTION E-E  
CURLED END SECTION DETAILS**



**SECTION B-B**

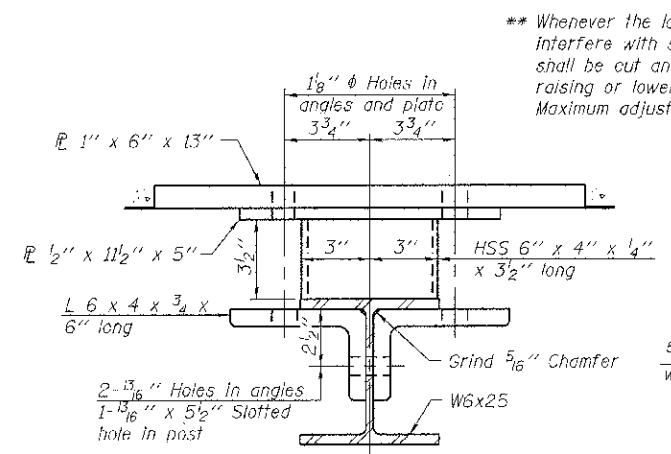


**SECTION AT RAILING POST**

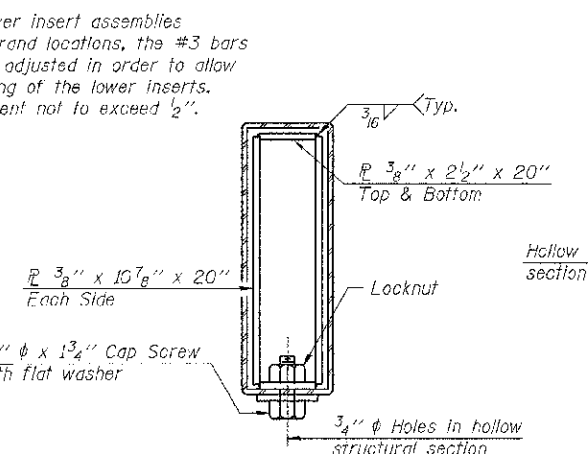


**ANCHOR DEVICE**

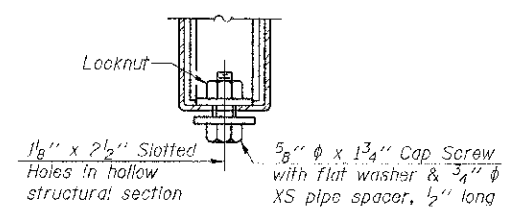
Notes:  
All field drilled holes shall be coated with an approved zinc rich paint before erection.  
For multi-span bridges, sufficient 1/4\"/>



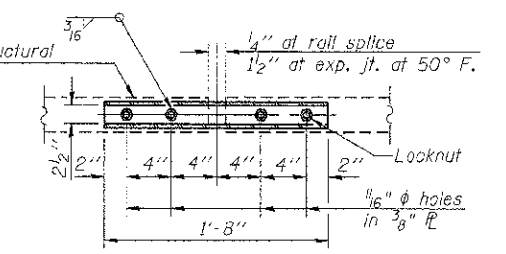
**SECTION C-C**



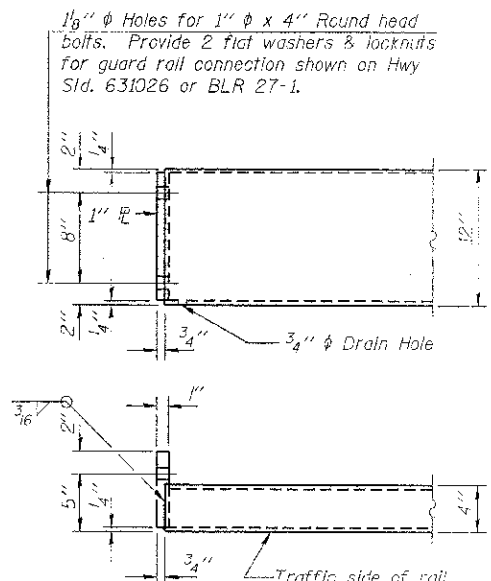
**SECTIONS AT RAIL SPLICE**



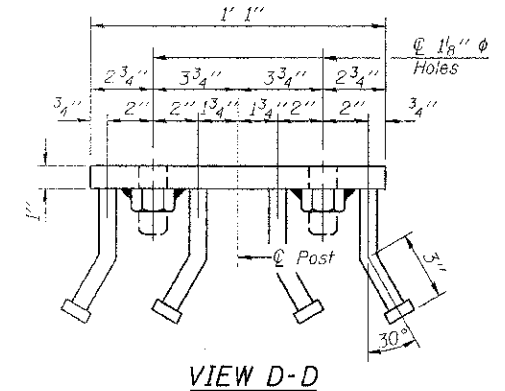
**RAIL SPLICE CONNECTION  
AT EXPANSION JT.**



**PLAN-BOTT. SPLICE  
TYPICAL**



**END OF RAIL DETAILS**



**VIEW D-D**

**BILL OF MATERIAL**

Item	Unit	Quantity
Steel Railing, Type S-1	Foot	145

R-23A 7-1-10 (10'-9" Maximum Post Spacing)

FILE NAME = 128135-ah-v-bridge.dgn	USER NAME =	DESIGNED - L.A.P.	REVISED -
HAMPTON, LENZINI AND RENWICK, INC. 3085 STEVENSON DRIVE, SUITE 201 SPRINGFIELD, IL 62764-4070	PLLOT SCALE =	CHECKED - S.W.M.	REVISED -
ILLINOIS PROFESSIONAL DESIGN FIRM 161/PE/36/CDMP 184/00269	PLLOT DATE = 2/14/2013	DRAWN - D.A.B.	REVISED -
		CHECKED - S.W.M.	REVISED -

STATE OF ILLINOIS  
JEFFERSON COUNTY HIGHWAY DEPARTMENT

STEEL RAILING, TYPE S1  
STRUCTURE NO. 041-3749

SHEET NO. 7 OF 11 SHEETS

F.R.	SECTION	COUNTY	TOTAL SHEETS	SHEET NO.
123	09-07105-00-BR	JEFFERSON	23	19
FIELD ROAD DISTRICT				CONTRACT NO. 99504
ILLINOIS FED. AID PROJECT BR05-00310623				