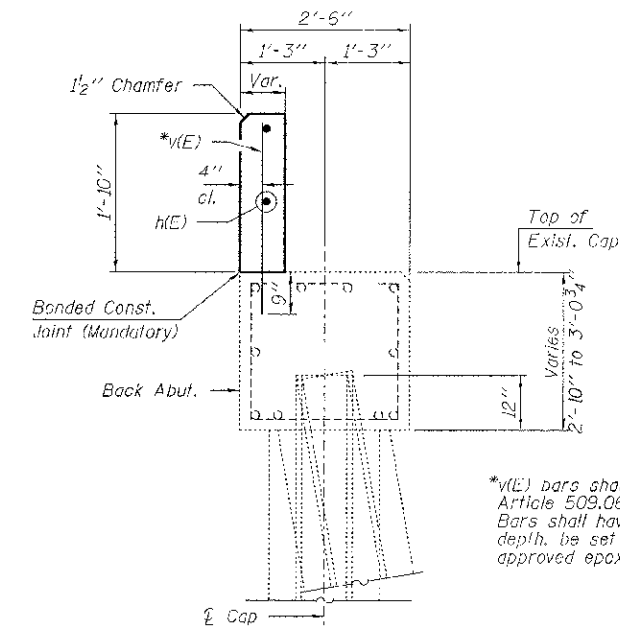


PLAN

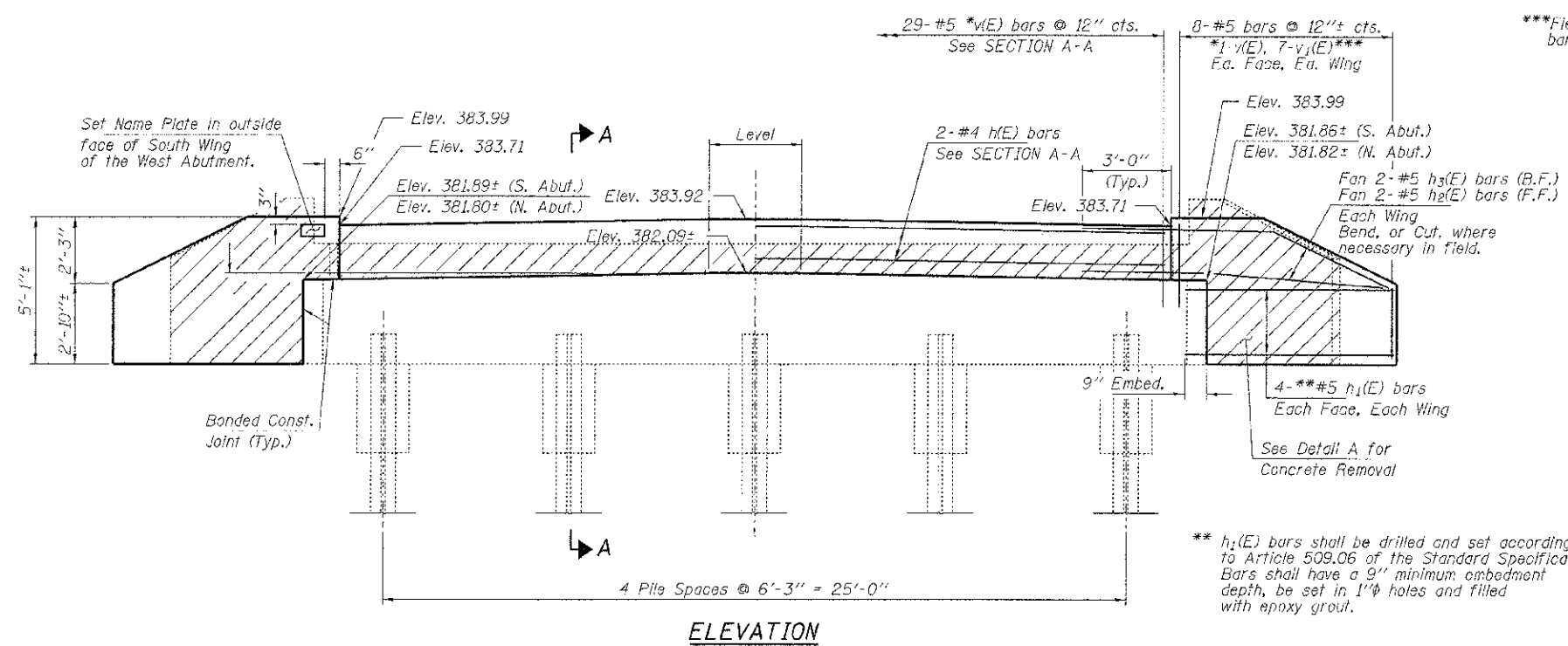
Concrete Removal area



SECTION A-A

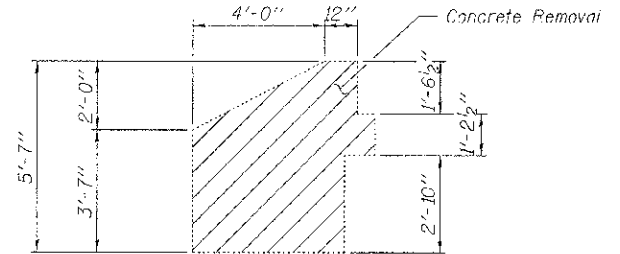
Proposed backwall to be poured after beams are in place.

\*v(E) bars shall be drilled and set according to Article 509.06 of the Standard Specifications. Bars shall have a 9" minimum embedment depth, be set in 1" holes and filled with approved epoxy grout.



ELEVATION

\*\* h<sub>1</sub>(E) bars shall be drilled and set according to Article 509.06 of the Standard Specifications. Bars shall have a 9" minimum embedment depth, be set in 1" holes and filled with epoxy grout.



EXISTING WINGWALL DETAIL A

Notes:  
 The contractor shall repair, at his own expense, any damage to the substructure caused by removal operations.  
 Cost of drilling and grouting reinforcing bars included in cost for Concrete Structures.  
 Structural Repair of Concrete shall be used to repair existing deterioration to the abutment as directed by the Engineer.  
 Existing wingwall reinforcement which extends into the abutment cap shall be burned off flush with surface, ground smooth, and sealed with epoxy. Cost included with Concrete Removal.  
 Backwall and wingwalls shall be poured after the beams are in place.

BILL OF MATERIAL - 2 ABUTS.

BAR	NO.	SIZE	LENGTH	SHAPE	
h(E)	4	#5	29'-6"	---	
h <sub>1</sub> (F)	32	#5	7'-6"	---	
h <sub>2</sub> (L)	8	#5	7'-8"	---	
h <sub>3</sub> (L)	8	#5	11'-0"	---	
v(E)	66	#5	2'-5"	---	
v <sub>1</sub> (E)	56	#5	4'-8"	---	
Concrete Structures				Cu. Yd.	7.4
Reinforcement Bars, Epoxy Coated				Pound	960
Concrete Sealer				Sq. Ft.	104
Concrete Removal				Cu. Yd.	6.0
Structural Repair of Concrete (Depth equal to or less than 5')				Sq. Ft.	20
Name Plates				Each	1