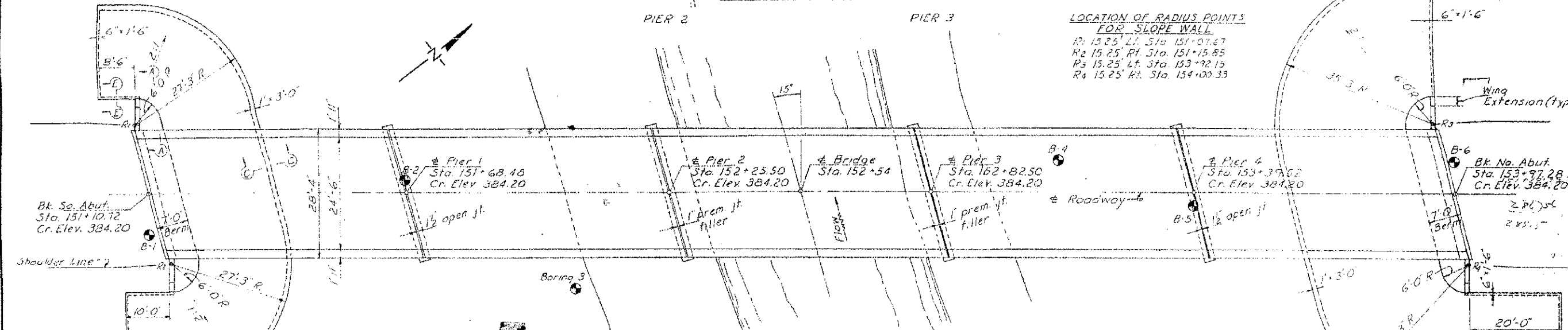
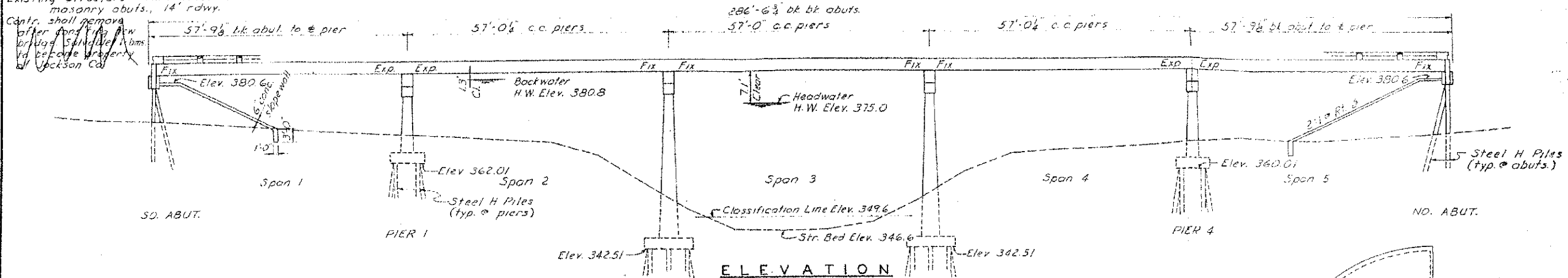


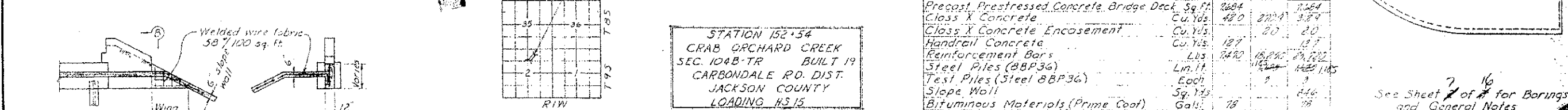
B.M. S.W. corner of sandstone abutment
south end exist bridge Rt. Sta. 153+00
Elev. 374.40
Existing Structure - Thru truss on closed
masonry abutts., 14' rdwy.
Cntr. shall remain
offer and new
drilling schedule
to be done
Jackson Co.



LOCATION OF RADIUS POINTS
FOR SLOPE WALL
R1 15.25 Lf. Sta. 151+07.67
R2 15.25 Rf. Sta. 151+15.85
R3 15.25 Lf. Sta. 153+92.15
R4 15.25 Rf. Sta. 154+00.33

TOTAL BILL OF MATERIAL

ITEM	SUPER	SUB	TOTAL
Name Plates	Each		1
Precast Prestressed Concrete Bridge Deck	Sq. Ft.	2684	2684
Class X Concrete	Cu. Yds	48.0	200.4
Class X Concrete Encasement	Cu. Yds		20
Handrail Concrete	Cu. Yds	18.7	18.7
Reinforcement Bars	Lbs	3440	18,700
Steel Piles (88P36)	Lin. Ft.		1485
Test Piles (Steel 88P36)	Each		3
Slope Wall	Sq. Yds		446
Bituminous Materials (Prime Coat)	Gals.	78	78
Leveling Binder (Machine Method)	Tons	44	44
Bituminous Concrete Surface Course (Subcl. I)	Tons	44	44
Structural Steel	Lbs	825	825
Class A Excavation for Structures	Cu. Yds	202	202
Class B Excavation for Structures	Cu. Yds	128	128
Removal of Existing Structures	Each		1



STATION 152+54
CRAB ORCHARD CREEK
SEC. 104B-TR BUILT 19
CARBONDALE RD. DIST.
JACKSON COUNTY
LOADING HS.15

LETTERING FOR NAME PLATE
See 910 815-1

WATERWAY DATA

Drainage Area	163,000 acres
Req'd. Opening (20 yrs.)	3,000 sq. ft.
Present Opening	1,800 sq. ft.
Proposed Opening	3,000 sq. ft. below El. 375.0

DESIGN STRESSES

$f_c = 2,000$ psi (Prestress Bms.) $f_s = 20,000$ (Perf.)
 $f_c = 1,400$ psi (Class X Conc.) $f_s = 173,400$ (Prestress Cables)
 $n = 8$ (Prestress Bms.); 10 (Cl. X Conc.) $v = 18$ psi (Ftg.)
 Loading HS.15 - 44

GENERAL PLAN & ELEVATION
CRAB ORCHARD CREEK BRIDGE
SECTION 104B-TR CARBONDALE RD. DIST.
JACKSON COUNTY
STATION 152+54

See Sheet 7 of 16 for Borings and General Notes

MADE & DESIGNED BY
M. J. R. JR.
ILLINOIS STRUCTURAL NO. 2134