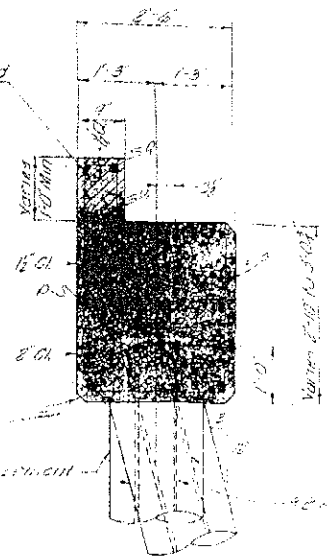


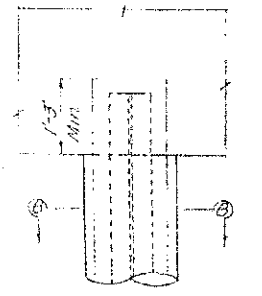
PLAN

Note
Piles marked B to be battered 3/11

Hatched portion not to be poured until Superstr. is in place.



SECTION A - A

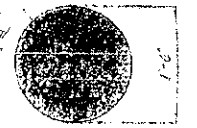


ELEVATION

Showing Pile Encasement Reinforcement

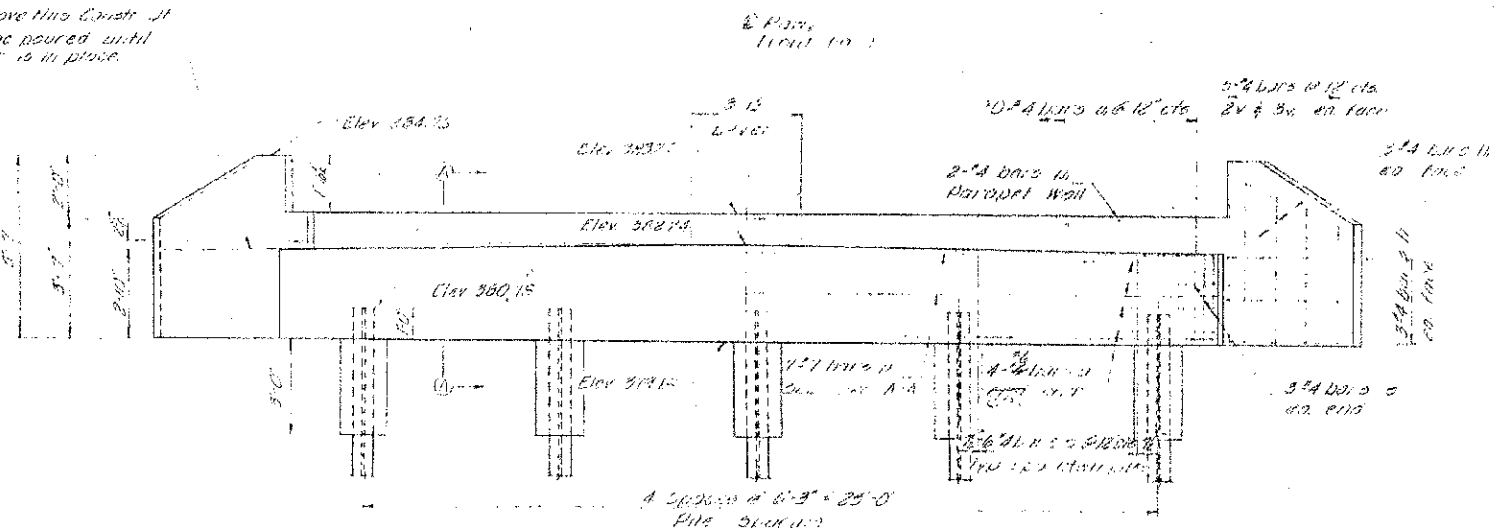
Class X Concrete Encasement - Extend to Elev. 312.18

4" dia. vertical bars
1" dia. horizontal bars
to be cast in concrete
pile encasement



SECTION B - B

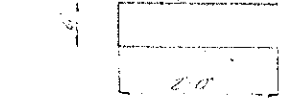
Concrete above this level is not to be poured until Superstr. is in place.



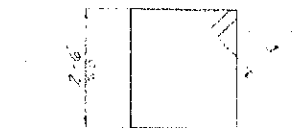
ELEVATION

PILE DATA

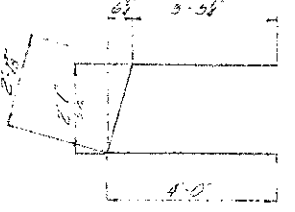
Type: No. 30 (2 Abut.)
Elev. Length: 54' (So. Abut.) 33' (No. Abut.)
Piles shall be driven to refusal
*Note: see one test log file attached in this set of plans.



BAR U



BAR S



BAR U

BILL OF MATERIAL - 2 ABUTS

BAR NO.	SIZE	LENGTH	SHAPE
1	1" dia.	29'-9"	Rect.
2	1" dia.	29'-9"	Rect.
3	1" dia.	9'-7"	Rect.
4	1" dia.	9'-7"	Rect.
5	1" dia.	8'-0"	Rect.
6	1" dia.	2'-5"	Rect.
7	1" dia.	10'-1"	Rect.
Class X Concrete Encasement			Co. Yds. 20'
Pile Encasement			Co. Yds. 2020
Steel (No. 30)			Lbs. 364
Form (No. 15125)			Foot 1-
Class X Concrete Encasement			Co. Yds. 20'

ABUTMENTS
CRAB ORCHARD CREEK BRIDGE
SECTION 104B-TR CARBONDALE RD. DIST.
JACKSON COUNTY
STATION 152 + 54

DESIGNED BY: M.J.K.
DRAWN BY: D.D.
CHECKED BY: R.E.G.
DATE: 8-20-66