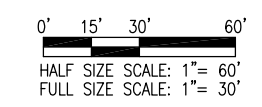
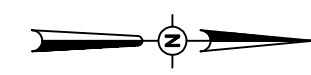
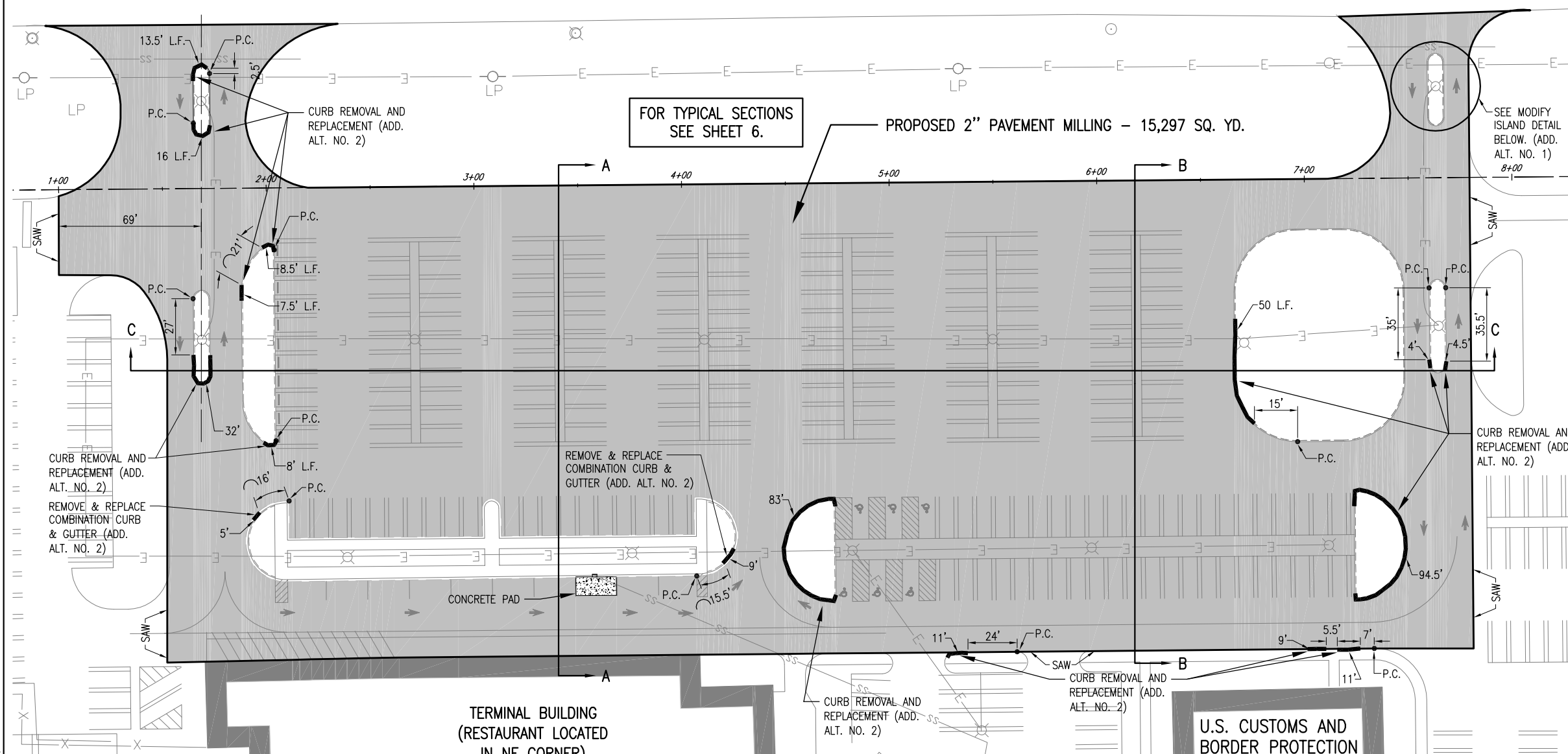


- EXISTING BUILDING
- PROPOSED MILLING (2.0" NOMINAL DEPTH)
- CURB REMOVAL AND REPLACEMENT
- X EXISTING FENCE
- SS EXISTING STORM SEWER
- w EXISTING WATERLINE
- S EXISTING SANITARY
- T EXISTING TELEPHONE
- FO EXISTING FIBER OPTIC
- G EXISTING GAS
- E EXISTING ELECTRIC
- /○ EXISTING STORM INLET/MAHOLE
- /X EXISTING LIGHT POLE/POLE-MOUNTED LIGHT
- P.C. POINT OF CURVATURE (BEGINNING OF RADIUS)



AIRPORT RD.



FOR TYPICAL SECTIONS SEE SHEET 6.

PROPOSED 2" PAVEMENT MILLING - 15,297 SQ. YD.

SEE MODIFY ISLAND DETAIL BELOW. (ADD. ALT. NO. 1)

CURB REMOVAL AND REPLACEMENT (ADD. ALT. NO. 2)

TERMINAL BUILDING (RESTAURANT LOCATED IN NE CORNER)

U.S. CUSTOMS AND BORDER PROTECTION

MODIFY TRAFFIC ISLAND NOTES (ADD. ALT. NO. 1)

THIS ITEM OF WORK SHALL CONSIST OF THE REMOVAL OF THE EXISTING TRAFFIC ISLAND AT THE NORTH ENTRANCE AS DETAILED ON THIS SHEET AND FILLING IN THE HOLE WITH CRUSHED AGGREGATE BASE COURSE (209) AND BITUMINOUS SURFACE COURSE (401).

THE EXISTING TRAFFIC ISLAND AT THE NORTH ENTRANCE WILL HAVE THE WEST END REMOVED AND A NEW CONCRETE CURB INSTALLED 18" FROM THE EXISTING LIGHT POLE AS SHOWN ON THIS SHEET.

THE CONTRACTOR WILL REMOVE THE CONCRETE CURB AND THE EARTH MATERIAL LOCATED WITHIN THE SECTION OF TRAFFIC ISLAND BEING REMOVED. THE EARTH MATERIAL WILL BE REMOVED TO A DEPTH OF 13" BELOW THE TOP OF THE SURROUNDING BITUMINOUS PAVEMENT (BEFORE IT IS MILLED).

THE CONTRACTOR WILL COMPACT THE BOTTOM OF THE HOLE AND THEN PLACE 6" OF A CRUSHED AGGREGATE BASE COURSE MATERIAL (209) IN THE HOLE. THE CONTRACTOR WILL GRADE AND COMPACT THIS AGGREGATE MATERIAL, TO THE SATISFACTION OF THE RESIDENT ENGINEER.

THE CONTRACTOR WILL THEN APPLY A BITUMINOUS PRIME COAT AND THEN PLACE 5" OF A BITUMINOUS SURFACE COURSE, SUPERPAVE MATERIAL (401) ON TOP OF THE CRUSHED AGGREGATE BASE COURSE. THE BITUMINOUS SURFACE COURSE WILL BE PLACED IN A MAXIMUM 3" LIFT.

THIS WORK WILL BE PAID FOR UNDER ITEM:
AS800419 "MODIFY TRAFFIC ISLAND" _____ PER LUMP SUM.

CURB/CURB AND GUTTER REMOVAL NOTES (ADD. ALT. NO. 2)

THE EXISTING CONCRETE CURB/CURB AND GUTTER SHOWN FOR REMOVAL WILL BE REMOVED FULL DEPTH. THE ACTUAL AMOUNT OF EXISTING CURB/CURB AND GUTTER TO BE REMOVED WILL BE DETERMINED BY THE RESIDENT ENGINEER AT THE TIME OF CONSTRUCTION. THE RESIDENT ENGINEER WILL MARK CURB THAT IS TO BE REMOVED AND REPLACED. IN ADDITION, A NOMINAL QUANTITY OF 15 LF OF CURB AND GUTTER HAS BEEN INCLUDED TO REMOVE AND REPLACE ANY CURB AND GUTTER IN POOR CONDITION AND AS DIRECTED BY THE RESIDENT ENGINEER. THE EXISTING PAVEMENT ADJOINING THE CURB TO BE REMOVED WILL BE SAWED TO ALLOW THE REMOVAL OF THE CURB WITHOUT DISPLACEMENT OF THE REMAINING PAVEMENT. ANY DISPLACEMENT OR DAMAGE TO THE ADJACENT PAVEMENT WILL BE REPAIRED BY THE CONTRACTOR AT HIS OWN EXPENSE.

THE REMOVED CURBS AND CURB & GUTTER WILL BE DISPOSED OF OFF THE AIRPORT SITE AT THE CONTRACTOR'S OWN EXPENSE.

THESE ITEMS OF WORK SHALL BE PAID FOR UNDER ITEM:
AT754900 "REMOVE CONCRETE CURB" _____ PER L.F.
AT800433 "REMOVE & REPLACE COMB. CURB & GUTTER" _____ PER L.F.

CLEAN AND SEAL BITUMINOUS CRACKS

THE AMOUNT OF CRACKS TO BE CLEANED AND SEALED WILL BE THE NUMBER OF LINEAR FEET OF CRACKS MARKED BY THE RESIDENT ENGINEER AT THE TIME OF CONSTRUCTION.

ALL CRACKS DESIGNATED BY THE RESIDENT ENGINEER FOR CLEANING AND SEALING WILL BE DONE SO AS STATED IN THE SPECIFICATIONS AND SPECIAL PROVISIONS.

ANY PROPOSED PAVEMENT MILLING WILL BE ACCOMPLISHED BEFORE THE CRACKS ARE CLEANED AND SEALED. THE RESIDENT ENGINEER WILL DETERMINE IF THE CRACKS ARE LARGE ENOUGH TO WARRANT CLEANING AND SEALING.

THIS ITEM OF WORK SHALL BE PAID FOR UNDER ITEM:
AR605541 "CLEAN & SEAL CRACKS" - PER L.F.

BITUMINOUS PAVEMENT MILLING (2")

THE AREA(S) DESIGNATED ON THIS SHEET WILL BE CUT OR TRIMMED. THE CUTTING OR TRIMMING WILL BE DONE BY ROTO-MILLING. THE TOLERANCE OF THE MILLING WILL BE AS STATED IN THE STANDARD SPECIFICATIONS.

IF A VERTICAL FACE IS NOT OBTAINED FROM THE MILLING OPERATIONS, OR IF THE VERTICAL FACE IS DAMAGED PRIOR TO PAVING, THE EXISTING PAVEMENT WILL BE SAW-CUT IN ORDER TO ACHIEVE A VERTICAL FACE FOR PAVING AGAINST. SAWING WILL BE CONSIDERED AS AN INCIDENTAL ITEM TO THE PROPOSED PAVEMENT MILLING AND NO ADDITIONAL COMPENSATION WILL BE ALLOWED.

ALL MILLED MATERIAL WILL BE DISPOSED OF OFF THE AIRPORT SITE.

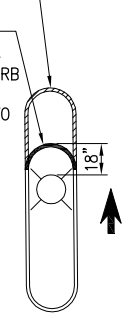
PRIOR TO APPLYING THE BITUMINOUS OVERLAY ALL MILLED AREAS WILL BE BROOMED AND BLOWN CLEAN AND A BITUMINOUS TACK COAT APPLIED. THE VERTICAL FACE OF ALL SAW CUTS WILL BE PAINTED WITH A LIQUID ASPHALT.

ANY ADJACENT PAVEMENT DAMAGED BY THE MILLING OPERATIONS WILL BE REPAIRED AT THE CONTRACTOR'S OWN EXPENSE.

THIS ITEM OF WORK SHALL BE PAID FOR UNDER ITEM:
AR401650 "BITUMINOUS PAVEMENT MILLING" - PER S.Y.

EXISTING CURB 29 L.F. (TO BE REMOVED)

PROPOSED CURB 13 L.F. (BACK OF CURB TO FACE OF LIGHT BASE TO BE 18")



MODIFY ISLAND DETAIL "NOT TO SCALE"

MAY 06, 2013 7:21 AM KINC00394 p:\SPR-SR036\hanson.domin\hanson Projects\Documents\3\Jobs\13A0013\3A0013D\CAD\Report\Sheet\C-111-PRP

REVISION	DATE

DECATUR, ILLINOIS
IL PROJ.: DEC-4271

Hanson Proj. No. 13A0013	FILENAME C-111-PRP.dwg
Scale 1" = 30'	Date 05/03/13
LAYOUT	BRK 03/27/13
DRAWN	RAD 03/27/13
REVIEWED	RAW 05/03/13

Hanson Professional Services Inc. 2013
1525 South Sixth Street
Springfield, Illinois 62703-2986
Ph: (217) 788-2450 Fax: (217) 788-2503
www.hanson-inc.com
Offices Nationwide

REHABILITATE PARKING LOT
PROPOSED PAVEMENT PREPARATION PLAN