

03

F.A.P. RTE.	SECTION	COUNTY	TOTAL SHEETS	SHEET NO.
717	(101)RS-4		21	1
			CONTRACT NO. 72L13	
*MASON, LOGAN				

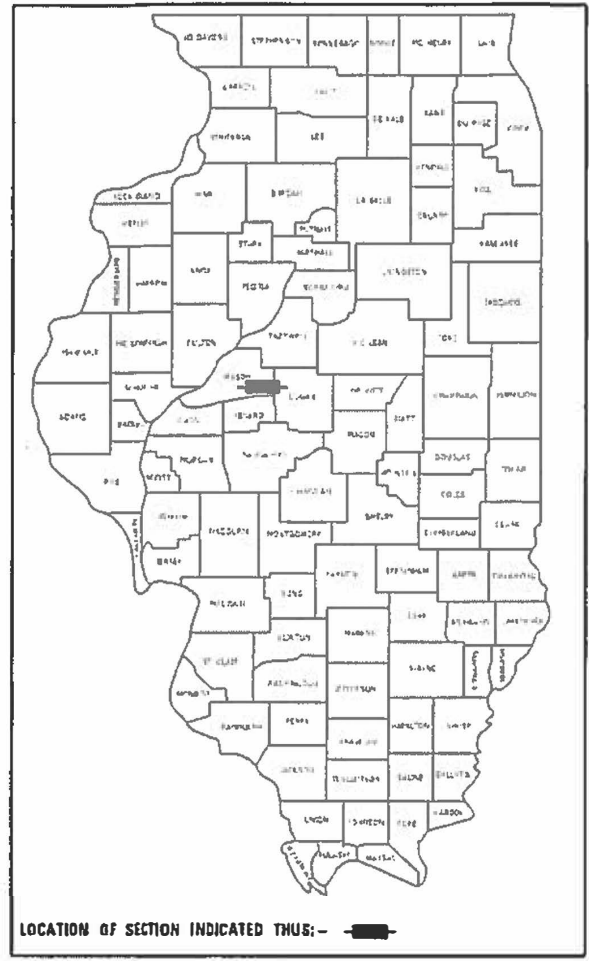
STATE OF ILLINOIS  
DEPARTMENT OF TRANSPORTATION

**PROPOSED  
HIGHWAY PLANS**

FAP 717 (IL 10)  
SECTION (101)RS-4  
PROJECT STP-6KE8(930)  
3P RESURFACING  
MASON AND LOGAN COUNTY

C-96-049-19

D96-035-19



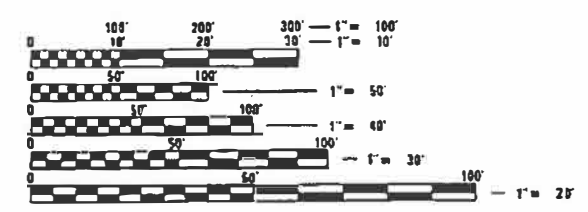
LOCATION OF SECTION INDICATED THUS: —

**INDEX OF SHEETS**

- 1 COVER SHEET
- 2 GENERAL NOTES
- 3-4 SUMMARY OF QUANTITIES
- 5-7 SCHEDULES OF QUANTITIES
- 8 TYPICAL SECTIONS
- 9 TIES AND BENCHMARKS
- 10-18 PLAN SHEETS
- 19-21 DETAIL SHEETS

**HIGHWAY CLASSIFICATION**

F.A.P. ROUTE 717 (IL 10)  
CLASSIFICATION: MINOR ARTERIAL (IL 10)  
ADT: 1575(2017) (IL 10)  
DESIGN SPEED: 60 MPH & 50 MPH  
POSTED SPEED: 55 MPH & 45 MPH  
PV = 85.2% (IL 10)  
SU = 9.5% (IL 10)  
MU = 5.3% (IL 10)

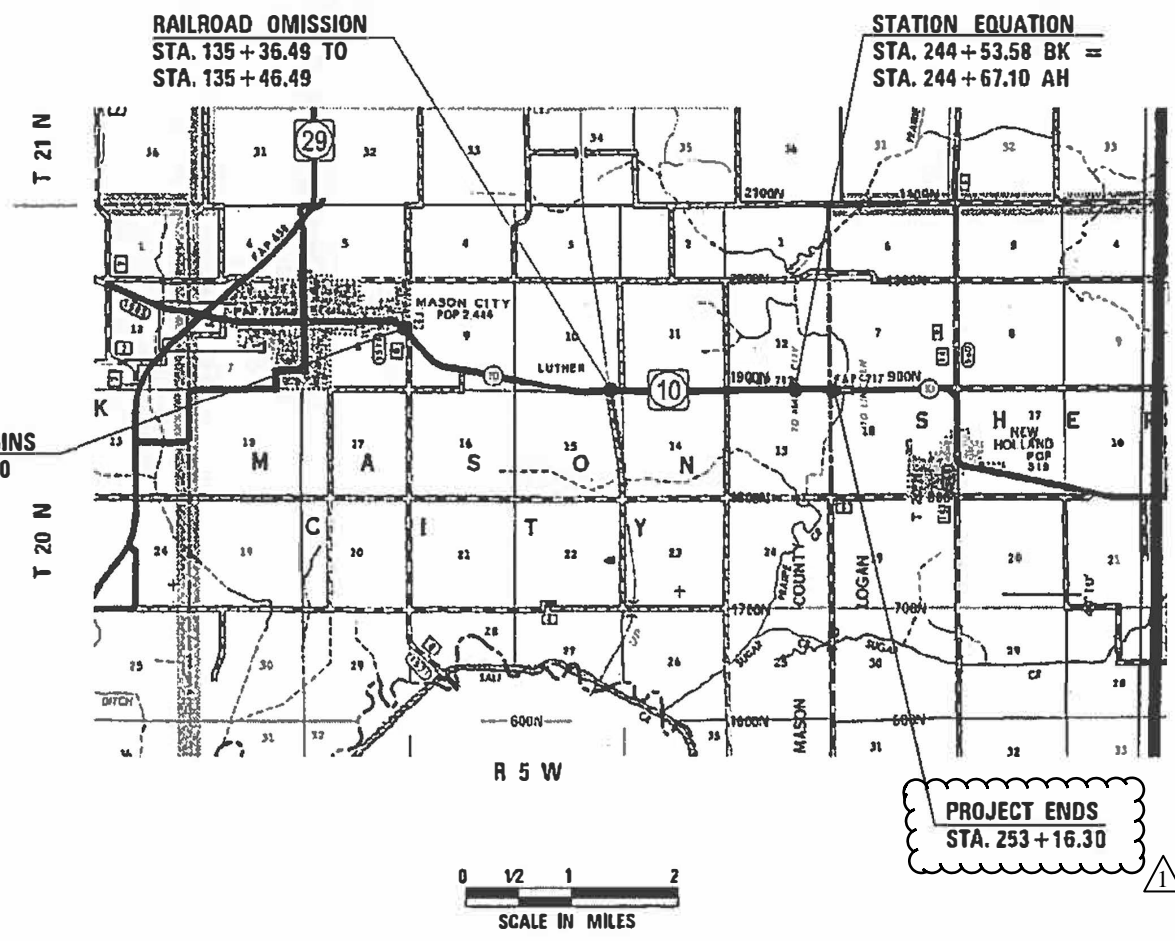


FULL SIZE PLANS HAVE BEEN PREPARED USING STANDARD ENGINEERING SCALES. REDUCED SIZED PLANS WILL NOT CONFORM TO STANDARD SCALES. IN MAKING MEASUREMENTS ON REDUCED PLANS, THE ABOVE SCALES MAY BE USED.

J.U.L.I.E.  
JOINT UTILITY LOCATION INFORMATION FOR EXCAVATORS  
1-800-892-0123  
OR 811

PROJECT ENGINEER: JAY EDWARDS (217) 785-0597  
PROJECT MANAGER: FRANK SHIMKUS (217) 785-9102

CONTRACT NO. 72L13



RAILROAD OMISSION  
STA. 135 + 36.49 TO  
STA. 135 + 46.49

STATION EQUATION  
STA. 244 + 53.58 BK =  
STA. 244 + 67.10 AH

PROJECT BEGINS  
STA. 27 + 50.00

PROJECT ENDS  
STA. 253 + 16.30

GROSS LENGTH = 22,546.64 FT. = 4.27 MILE  
NET LENGTH = 22,536.64 FT. = 4.27 MILE

STATE OF ILLINOIS  
DEPARTMENT OF TRANSPORTATION

SUBMITTED 12 March 2019

*Jeffrey Smith*  
REGIONAL ENGINEER

May 10 2019  
*CA ETK*  
ENGINEER OF DESIGN AND ENVIRONMENT

May 10 2019  
*Paul E. Chis*  
DIRECTOR OF HIGHWAYS PROJECT IMPLEMENTATION

PRINTED BY THE AUTHORITY  
OF THE STATE OF ILLINOIS



Matchline Sta. 246+13.52

MASON COUNTY  
LOGAN COUNTY

PR HMA SURF REM, VARIABLE DEPTH  
PR HMA SURFACE COURSE 2"

PR HMA SURF REM 1-1/2"  
PR HMA SHOULDER 1-1/2"

10'-0"  
PR BUTT JT

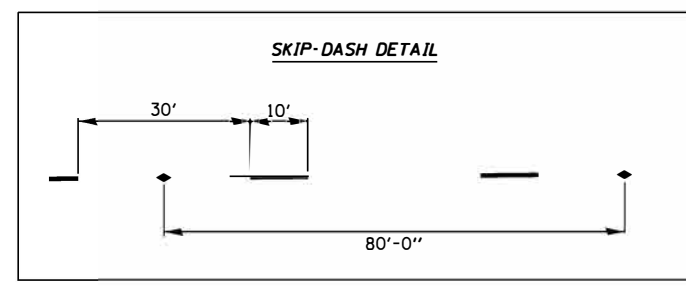
PI Sta 254+75.91

PR AGG SHOULDER  
TYPE B

PR AGG SHOULDER  
TYPE B

PROJECT ENDS  
STA. 253+16.30

48" CMP  
W/FLAP GATE



PAVEMENT MARKING LEGEND

- Ⓐ PAINT PAVEMENT MARKING, LINE - 5" YELLOW (SOLID OR SKIP DASH)
- Ⓑ PAINT PAVEMENT MARKING, LINE - 5" WHITE (SOLID)
- Ⓒ PREFORMED PLASTIC PAVEMENT MARKING, TYPE B - LINE 24", WHITE (SOLID)
- Ⓓ PREFORMED PLASTIC PAVEMENT MARKING, TYPE B - LETTERS AND SYMBOLS

△ REV. 6-4-2019

FILE NAME =	USER NAME = shmkusft	DESIGNED -	REVISED -	<b>STATE OF ILLINOIS DEPARTMENT OF TRANSPORTATION</b>	<b>PLAN SHEETS FAP 717 (IL 10)</b>			F.A.P. RTE.	SECTION	COUNTY	TOTAL SHEETS	SHEET NO.
pw\planroom.dot.illinois.gov\PIDOT\Documents\IDOT Offices\District 6\Projects\0672L3\0672L3\CA\Sheets\0672L13-shr-plan50.dwg		CHECKED -	REVISED -					717	(101) RS-4	*	21	18
PLOT SCALE = 100.0000' / in.		DATE -	REVISED -					CONTRACT NO. 72L13				
Default								ILLINOIS FED. AID PROJECT				
	PLOT DATE = 3/11/2019			SCALE:	SHEET	OF	SHEETS	STA.	TO	STA.	MASON, LOGAN	