

087

**INDEX OF SHEETS**

06-14-2019 LETTING ITEM 087

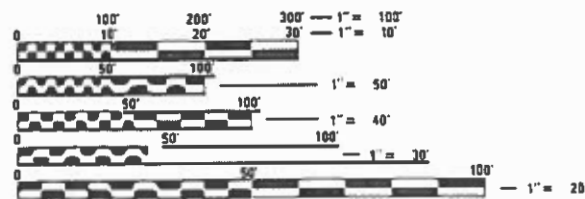
- 1. COVER SHEET
- 2. GENERAL NOTES, JOB SPECIFIC NOTE & HMA MIXTURE REQUIREMENTS
- 3. SUMMARY OF QUANTITIES
- 4. SCHEDULE OF QUANTITIES
- 5. EXISTING/PROPOSED TYPICAL SECTIONS
- 6. LINE DIAGRAM
- 7. GENERAL PLAN
- 8. RAILROAD FORMS
- 9-10. CADD STANDARDS

**HIGHWAY STANDARDS**

- 701411-09
- 701601-09
- 701901-08
- 780001-05

**DESIGN DESIGNATION (ADAMS STREET)**

- OTHER ARTERIAL
- 2017 ADT=19400
- 2015 MU=726
- 2015 SU=875



FULL SIZE PLANS HAVE BEEN PREPARED USING STANDARD ENGINEERING SCALES. REDUCED SIZED PLANS WILL NOT CONFORM TO STANDARD SCALES. IN MAKING MEASUREMENTS ON REDUCED PLANS, THE ABOVE SCALES MAY BE USED.

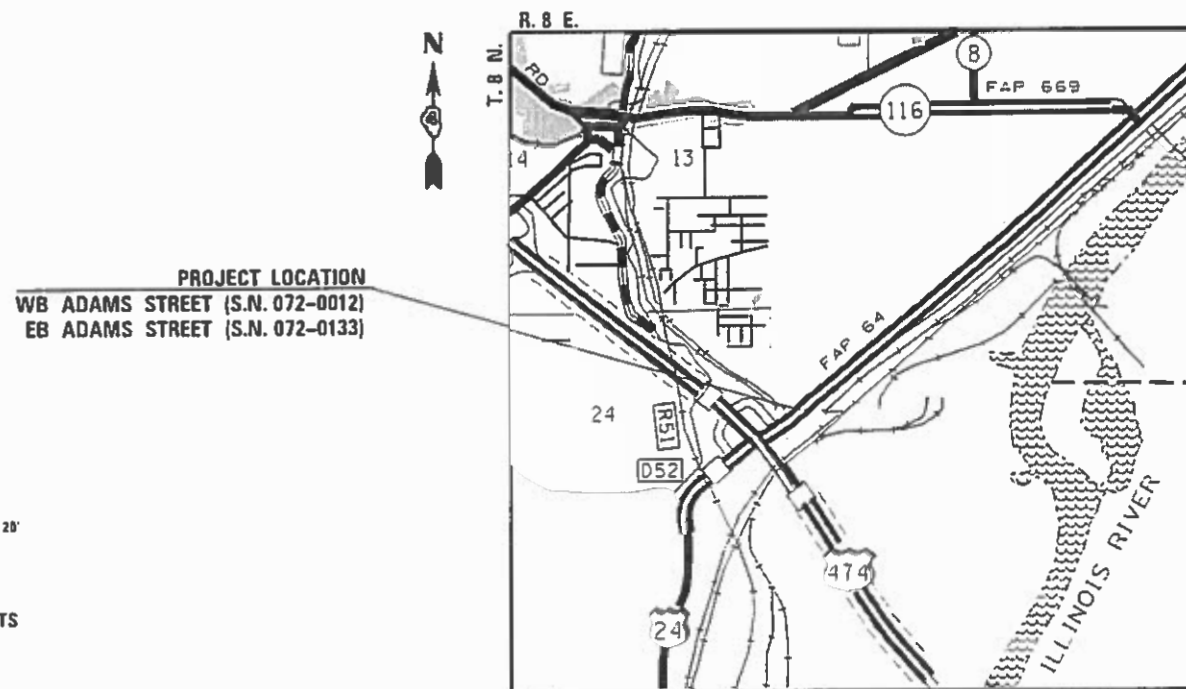
J.U.L.I.E.  
JOINT UTILITY LOCATION INFORMATION FOR EXCAVATORS  
1-800-892-0123  
OR 811

PROJECT ENGINEER: RICH DOTSON (309) 671-3455  
 PROJECT MANAGER: ANNA DEVINE (309) 671-3475  
 CATALOG NO. 035744-00D  
 CONTRACT NO. 68F02

STATE OF ILLINOIS  
 DEPARTMENT OF TRANSPORTATION

**PROPOSED  
 HIGHWAY PLANS**

FAP ROUTE 64 (ADAMS STREET)  
 SECTION (48HVB)BDR  
 PROJECT N/A  
 CONTRACT MAINTENANCE  
 PEORIA COUNTY  
 C-94-057-19



GROSS LENGTH = 813 FT. = 0.15 MILE  
 NET LENGTH = 813 FT. = 0.15 MILE

| F.A.P. ROUTE       | SECTION | COUNTY | TOTAL SHEETS | SHEET NO. |
|--------------------|---------|--------|--------------|-----------|
| 64                 | 48HVBDR | PEORIA | 10           | 1         |
| CONTRACT NO. 68F02 |         |        |              |           |

D-94-038-19



**DESCRIPTION OF WORK:**  
 THIS PROJECT CONSISTS OF A MILL AND OVERLAY OF S.N. 072-0012 & 072-0133, CARRYING ADAMS STREET OVER THE B.N.S.F. & U.P. RAILROADS AT THE WEST CITY LIMITS IN PEORIA.

STATE OF ILLINOIS  
 DEPARTMENT OF TRANSPORTATION

SUBMITTED Mar 27 2019  
Kensel A. Garnett, RSD  
 REGION THREE ENGINEER

May 10 19  
See EA ETS  
 ENGINEER OF DESIGN AND ENVIRONMENT

May 10 19  
Paul J. [Signature]  
 DIRECTOR OF HIGHWAYS PROJECT IMPLEMENTATION

**PRINTED BY THE AUTHORITY  
 OF THE STATE OF ILLINOIS**

**GENERAL NOTES**

**107.00 COMMITMENTS**

**THERE ARE NO COMMITMENTS WITH THIS CONTRACT**

**204.00 ENVIRONMENTAL REVIEWS**

Prior to the use of any proposed borrow areas, use areas (temporary access roads, detours, run-arounds, etc.) and/or waste areas, the Contractor shall file the required environmental resource request surveys according to Section 107.22 of the Standard Specifications. These surveys are required in order for the Department to conduct cultural and biological resource surveys for the proposed site.

The required environmental resource documentation shall include the following:

- \* BDE Form 2289 (Cultural and Natural Resources Review of Borrow Areas)
- \* BDE Form 2290 (Waste/Use Area Review)
- \* A location map showing the size limits and location of the use area
- \* Color photographs depicting the use area
- \* Borrow Area Entry Agreement form – D4 PI0101

Prior to any waste materials being removed from the construction site the required environmental resource surveys shall be obtained and filed by the Contractor. Excess waste products removed from the construction site shall be disposed of as required in Section 202.03 of the Standard Specifications.

Any protruding metal bars shall be removed prior to the disposal of broken concrete at approved disposal sites.

Please note that a minimum of four weeks shall be allowed for the District to obtain the required environmental clearances and six weeks for the required borrow site environmental clearances.

**406.01 BRIDGE OVERLAY NOTIFICATION**

After placement of the bridge deck overlay, the Resident Engineer shall notify the District Bridge Maintenance Engineer of the "as constructed" milling depth and overlay thickness for updating the Illinois Highway Information System.

**STATUS OF UTILITIES**

**NO UTILITY CAUTIONS OR CONFLICTS FOR THIS PROJECT**

**JOB SPECIFIC NOTE**

**DECK DRAINS SHALL BE PRESERVED DURING RESURFACING**

**HMA MIXTURE REQUIREMENTS**

|   |                       |  |
|---|-----------------------|--|
| The following mixture requirements are applicable for this project:   |                       |  |
| Mixture Use(s):   | Polymer Surface 1.25" |  |
| AC/PG:  | SBS or SBR 76-28      |  |
| Design Air Voids:   | 4.0% @ N=50           |  |
| Mixture Composition: (Mixture Gradation)  | IL 9.5 FG             |  |
| Friction Aggregate:   | Mix D                 |  |
| Quality Management Program:   | QCQA                  |  |
| <p><i>Note:</i></p> <p>1) Individual lift thickness of each mix type will be no less than 3 times nominal maximum aggregate size and no more than 6 times nominal maximum aggregate size, unless otherwise approved by the Engineer.</p> <p>2) For design purposes, mixture weight for all mixes is determined to be 112.0 lb/s.y/in., unless otherwise noted.</p> <p>3) Sublot sizes for PFP and QCP mixes will be 600 tons, unless otherwise agreed to by the Engineer and the paving contractor.</p> |                       |  |

MODEL: \\MODELS\MAMES  
FILE NAME: 31113

|                        |            |           |
|------------------------|------------|-----------|
| USER NAME = \$USERS    | DESIGNED - | REVISED - |
|                        | DRAWN -    | REVISED - |
| PLOT SCALE = \$SCALE\$ | CHECKED -  | REVISED - |
| PLOT DATE = \$DATE\$   | DATE -     | REVISED - |

**STATE OF ILLINOIS  
DEPARTMENT OF TRANSPORTATION**

**GENERAL NOTES, JOB SPECIFIC  
NOTE & HMA MIX REQUIREMENTS**

SCALE: SHEET OF SHEETS STA. TO STA.

|             |           |        |                    |           |
|-------------|-----------|--------|--------------------|-----------|
| F.A.P. RTE. | SECTION   | COUNTY | TOTAL SHEETS       | SHEET NO. |
| 64          | (48HV)BDR | PEORIA | 10                 | 2         |
| ILLINOIS    |           |        | FED. AID PROJECT   |           |
|             |           |        | CONTRACT NO. 68F02 |           |

| CODE NO.   | ITEM  | UNIT   | TOTAL QUANTITY | CONSTRUCTION CODE |                        |
|------------|---|--------|----------------|-------------------|------------------------|
|            |   |        |                | 0059 BRIDGE       | RESURFACING 100% STATE |
|            |   |        |                |                   |                        |
| 40600295   | POLYMERIZED BITUMINOUS MATERIALS (TACK COAT)              | POUND  | 7040           | 7040              |                        |
|            |   |        |                |                   |                        |
| 40603587   | POLYMERIZED HOT-MIX ASPHALT SURFACE COURSE, IL-9.5FG, N50 | TON    | 548            | 548               |                        |
|            |   |        |                |                   |                        |
| 67100100   | MOBILIZATION  | L SUM  | 1              | 1                 |                        |
|            |   |        |                |                   |                        |
| 70100420   | TRAFFIC CONTROL AND PROTECTION, STANDARD 701411           | EACH   | 1              | 1                 |                        |
|            |   |        |                |                   |                        |
| 70102630   | TRAFFIC CONTROL AND PROTECTION, STANDARD 701601           | L SUM  | 1              | 1                 |                        |
|            |   |        |                |                   |                        |
| 70107025   | CHANGEABLE MESSAGE SIGN                                   | CAL DA | 70             | 70                |                        |
|            |   |        |                |                   |                        |
| 70300100   | SHORT-TERM PAVEMENT MARKING                               | FOOT   | 372            | 372               |                        |
|            |   |        |                |                   |                        |
| 70300150   | SHORT TERM PAVEMENT MARKING REMOVAL                       | SQ FT  | 124            | 124               |                        |
|            |   |        |                |                   |                        |
| * 78009004 | MODIFIED URETHANE PAVEMENT MARKING - LINE 4"              | FOOT   | 3125           | 3125              |                        |
|            |   |        |                |                   |                        |
| * 78009006 | MODIFIED URETHANE PAVEMENT MARKING - LINE 6"              | FOOT   | 800            | 800               |                        |
|            |   |        |                |                   |                        |
| * 78009008 | MODIFIED URETHANE PAVEMENT MARKING - LINE 8"              | FOOT   | 165            | 165               |                        |
|            |   |        |                |                   |                        |
| Z0004556   | HOT - MIX ASPHALT SURFACE REMOVAL (DECK)                  | SQ YD  | 7822           | 7822              |                        |
|            |   |        |                |                   |                        |
| Z0048665   | RAILROAD PROTECTIVE LIABILITY INSURANCE                   | L SUM  | 1              | 1                 |                        |
|            |   |        |                |                   |                        |
|            |   |        |                |                   |                        |

\*= SPECIALTY ITEM

MODEL: #MODELNAME\$  
FILE NAME: \$FILE\$

|                       |            |           |
|-----------------------|------------|-----------|
| USER NAME = \$USER*   | DESIGNED - | REVISED - |
|                       | DRAWN -    | REVISED - |
| PLOT SCALE = \$SCALE* | CHECKED -  | REVISED - |
| PLOT DATE = \$DATE*   | DATE -     | REVISED - |

**STATE OF ILLINOIS  
DEPARTMENT OF TRANSPORTATION**

**SUMMARY OF QUANTITIES**

| F.A.P. RTE.               | SECTION    | COUNTY | TOTAL SHEETS       | SHEET NO. |
|---------------------------|------------|--------|--------------------|-----------|
| 64                        | (48HVB)BDR | PEORIA | 10                 | 3         |
|                           |            |        | CONTRACT NO. 68F02 |           |
| ILLINOIS FED. AID PROJECT |            |        |                    |           |

| LOCATION         | LENGTH   | AVG. WIDTH | AREA     | HMA SURFACE<br>REMOVAL (DECK) | POLY HMA SURFACE<br>COURSE, IL-9.5FG, N50 | POLY. BIT. MATERIALS<br>(TACK COAT) |        |       |        |
|------------------|----------|------------|----------|-------------------------------|---|-------------------------------------|--------|-------|--------|
|                  |          |            |          |                               | 1.25"                                     | 0.10 LBS/SQ FT<br>1 APPLICATION     |        |       |        |
|                  |          |            |          |                               | TON                                       | POUND                               |        |       |        |
| EASTBOUND        |          |            |          |                               |   |                                     |        |       |        |
| STA.             | 211+71.4 | TO         | 219+66.3 | 794.9                         | 49.5                                      | 39347.5                             | 4371.9 | 306.0 | 3934.8 |
| WESTBOUND        |          |            |          |                               |   |                                     |        |       |        |
| STA.             | 211+61.0 | TO         | 219+27.7 | 766.7                         | 40.5                                      | 31051.4                             | 3450.2 | 241.5 | 3105.1 |
| <i>SUB-TOTAL</i> |          |            |          |                               |   |                                     | 7822.1 | 547.5 | 7039.9 |
| TOTAL            |          |            |          |                               |   |                                     | 7822.0 | 548   | 7040   |

| LOCATION         | MODIFIED URETHANE PAVEMENT<br>MARKING - LINE 4" |        | MODIFIED URETHANE<br>PAVEMENT MARKING -<br>LINE 6" | MODIFIED URETHANE<br>PAVEMENT MARKING - LINE 8" | SHORT TERM<br>PAVEMENT<br>MARKING | SHORT TERM<br>PAVEMENT<br>MARKING REMOVAL |       |       |       |
|------------------|---|--------|--|---|-----------------------------------|---|-------|-------|-------|
|                  | WHITE   | YELLOW | WHITE-SKIP   | WHITE-DASH                                      |                                   |   |       |       |       |
|                  | FOOT  | FOOT   | FOOT   | FOOT  | FOOT                              | SQ FT                                     |       |       |       |
| EASTBOUND        |   |        |  |   |                                   |   |       |       |       |
| STA.             | 211+71.4  | TO     | 219+66.3   | 813.0   | 778.0                             | 400.0                                     | 165.0 | 228.0 | 76.0  |
| WESTBOUND        |   |        |  |   |                                   |   |       |       |       |
| STA.             | 211+61.0  | TO     | 219+27.7   | 767.0   | 767.0                             | 400.0                                     |       | 144.0 | 48.0  |
| <i>SUB-TOTAL</i> |   |        |  | 1580.0  | 1545.0                            | 800.0                                     | 165.0 | 372.0 | 124.0 |
| TOTAL            |   |        |  | 3125.0  |                                   | 800.0                                     | 165.0 | 372.0 | 124.0 |

| LOCATION | MOBILIZATION | TRAFFIC CONTROL AND<br>PROTECTION, STANDARD<br>701601 | TRAFFIC CONTROL AND<br>PROTECTION, STANDARD<br>701411 | CHANGEABLE MESSAGE<br>SIGN* | RAILROAD<br>PROTECTIVE<br>LIABILITY<br>INSURANCE |
|----------|--------------|---|---|-----------------------------|--|
|          | L SUM        | L SUM   | EACH  | CAL DA                      | LSUM   |
| JOBSITE  | 1.0          | 1.0   | 1.0   | 70.0                        | 1.0  |
| TOTAL    | 1.0          | 1.0   | 1.0   | 70.0                        | 1.0  |

\*2 SIGNS @ 35 DAYS EACH

MODEL: \\MODELNAME\$  
FILE: \\NAME\$.PLOT\$

|                        |            |           |
|------------------------|------------|-----------|
| USER NAME = \$USERS    | DESIGNED - | REVISED - |
|                        | DRAWN -    | REVISED - |
| PLOT SCALE = \$SCALE\$ | CHECKED -  | REVISED - |
| PLOT DATE = \$DATE\$   | DATE -     | REVISED - |

**STATE OF ILLINOIS  
DEPARTMENT OF TRANSPORTATION**

**SCHEDULE OF QUANTITIES**

SCALE: SHEET OF SHEETS STA. TO STA.

| F.A.P.<br>RTE.     | SECTION   | COUNTY | TOTAL<br>SHEETS           | SHEET<br>NO. |
|--------------------|-----------|--------|---------------------------|--------------|
| 64                 | (48HV)BDR | PEORIA | 10                        | 4            |
| CONTRACT NO. 68F02 |           |        | ILLINOIS FED. AID PROJECT |              |

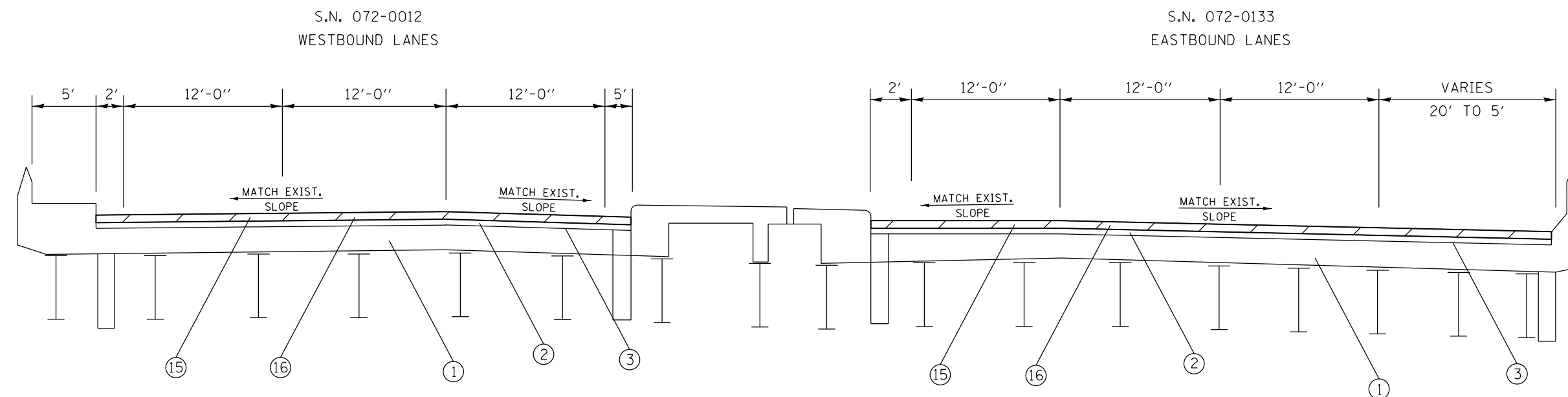
LEGEND

EXISTING

- ① 8" SLAB
- ② 1.25"± HMA OVERLAY
- ③ 0.5"± WATERPROOFING

PROPOSED

- ⑮ HMA SURFACE REMOVAL (DECK), 1.25"
- ⑯ POLY. HMA SURF. CSE, IL-9.5FG, N50-1.25"



DRAWING NOT TO SCALE

MODEL: 140DELMAMES  
FILE: 140MDS: 37113

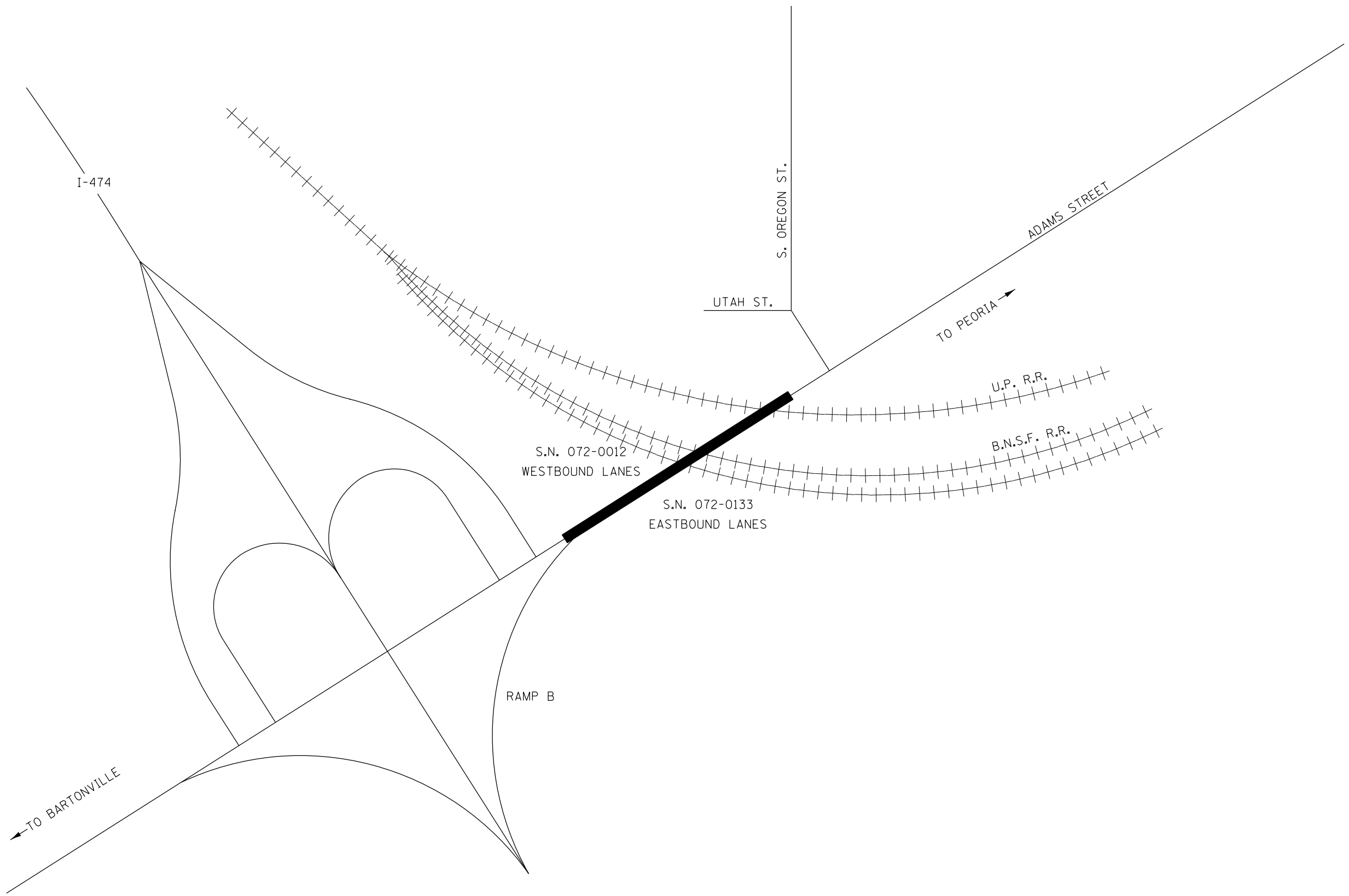
|                        |            |           |
|------------------------|------------|-----------|
| USER NAME = \$USERS    | DESIGNED - | REVISED - |
|                        | DRAWN -    | REVISED - |
| PLOT SCALE = \$SCALE\$ | CHECKED -  | REVISED - |
| PLOT DATE = \$DATE\$   | DATE -     | REVISED - |

**STATE OF ILLINOIS  
DEPARTMENT OF TRANSPORTATION**

**EXISTING/PROPOSED TYPICAL**

SCALE: SHEET OF SHEETS STA. TO STA.

| F.A.P. RTE.               | SECTION   | COUNTY | TOTAL SHEETS | SHEET NO. |
|---------------------------|-----------|--------|--------------|-----------|
| 64                        | (48HV)BDR | PEORIA | 10           | 5         |
| CONTRACT NO. 68F02        |           |        |              |           |
| ILLINOIS FED. AID PROJECT |           |        |              |           |



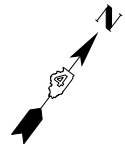
MODEL: \$MODELNAME\$  
FILE NAME: \$FILE\$

|                        |            |           |
|------------------------|------------|-----------|
| USER NAME = \$USERS    | DESIGNED - | REVISED - |
|                        | DRAWN -    | REVISED - |
| PLOT SCALE = \$SCALE\$ | CHECKED -  | REVISED - |
| PLOT DATE = \$DATE\$   | DATE -     | REVISED - |

**STATE OF ILLINOIS  
DEPARTMENT OF TRANSPORTATION**

|                     |       |    |        |              |
|---------------------|-------|----|--------|--------------|
| <b>LINE DIAGRAM</b> |       |    |        |              |
| SCALE:              | SHEET | OF | SHEETS | STA. TO STA. |

|                           |           |        |              |           |
|---------------------------|-----------|--------|--------------|-----------|
| F.A.P. RTE.               | SECTION   | COUNTY | TOTAL SHEETS | SHEET NO. |
| 64                        | (48HV)BDR | PEORIA | 10           | 6         |
| CONTRACT NO. 68F02        |           |        |              |           |
| ILLINOIS FED. AID PROJECT |           |        |              |           |



LEGEND

- HMA SURFACE REMOVAL (DECK)  
POLY. HMA SURFACE COURSE, IL-9.5FG, N50
- EXISTING JOINTS  
(CONTRACTOR SHALL NOT DAMAGE  
DURING HMA REMOVAL AND  
REPLACEMENT PROCESS)

STA. 211+61 TO STA. 219+27.7  
HMA SURF. REM. (DECK) = 3450.0 SQ YD  
POLY. HMA SURF. CSE, IL-9.5FG, N50 = 241.5 TONS

BEGINNING JOB LIMITS  
STA. 211+61



STA. 211+61 TO STA. 219+28  
HMA SURF. REM. (DECK) = 4372.0 SQ YD  
POLY. HMA SURF. CSE, IL-9.5FG, N50 = 306.0 TONS

ENDING JOB LIMITS  
STA. 219+91.8

MODEL: 140DELMAMES  
FILE NAME: 31115

|                        |            |           |
|------------------------|------------|-----------|
| USER NAME = \$USERS    | DESIGNED - | REVISED - |
|                        | DRAWN -    | REVISED - |
| PLOT SCALE = \$SCALE\$ | CHECKED -  | REVISED - |
| PLOT DATE = \$DATE\$   | DATE -     | REVISED - |

**STATE OF ILLINOIS  
DEPARTMENT OF TRANSPORTATION**

**GENERAL PLAN**

SCALE: SHEET OF SHEETS STA. TO STA.

| F.A.P. RTE.               | SECTION   | COUNTY | TOTAL SHEETS | SHEET NO. |
|---------------------------|-----------|--------|--------------|-----------|
| 64                        | (48HV)BDR | PEORIA | 10           | 7         |
| CONTRACT NO. 68F02        |           |        |              |           |
| ILLINOIS FED. AID PROJECT |           |        |              |           |



**ROADWAY SURFACING/RESURFACING PROCESS INSTRUCTIONS**

**Licensing Process:**

- Once application package is received by Jones Lang LaSalle Brokerage, Inc. (JLL), the application and drawing will be forwarded to the engineering firm to prepare the Exhibit "A" drawings for the contract. **This process takes approximately 10 to 15 working days.**
- When the Exhibit "A" is completed, information will be forwarded to the local BNSF Roadmaster for approval. Once approved, a contract will be prepared and two (2) copies will be forwarded to you for an original signature. A letter will be sent to you that will provide directions regarding insurance and any additional fees.
- Return the signed contracts (2 contracts with original signatures), along with the appropriate **payment and Certificates of Insurance** to JLL's Permit Department.
- The final contracts, with original signatures, are presented for execution provided payment has been received and insurance has been approved.
- Once the contract is executed, one original will be returned to you for your files.
- Prior to commencing any work on the Premises, Licensee shall complete and shall require its contractor (all parties who will be working on the site) to complete the safety training program at Internet Website [www.bnsfcontractor.com](http://www.bnsfcontractor.com).
- This training must be completed no more than one year in advance of Licensee's entry on the Premises.
- The cover letter and the executed contract will list the Roadmaster's name and phone number. **You will need to contact the Roadmaster thirty (30) days prior to beginning work.**

**Process Time:**

Please be advised that the average time period for completion of this process is 4 weeks from the time that the application is received. Every effort will be made to complete this process in a timely manner.

**Insurance Requirements for the following Agreement:**

|   | Temporary Occupancy  |
|---|--|
| <b>Commercial General Liability Insurance</b>                 | Contractual Liability with a combined single limit of a minimum of \$2,000,000 each occurrence and an aggregate limit of at least \$4,000,000.   |
| <b>Business Automobile Insurance</b>                          | Combined single limit of at least \$1,000,000 per occurrence.  |
| <b>Workers Compensation and Employers Liability Insurance</b> | Employers' Liability with limits of at least \$500,000 each accident, \$500,000 by disease policy limit, \$500,000 by disease each employee.   |
| <b>Railroad Protective Liability Insurance</b>                | Coverage of at least \$2,000,000 per occurrence and \$6,000,000 in the aggregate, with the exception of New Mexico in which coverage is \$5,000,000 per occurrence and \$10,000,000 in the aggregate |

**Note:** These limits are subject to change without notice. An Agreement will be provided to you, which contains details concerning insurance requirements.

**Please send the following so we may process your License request:**

- If License is for a Seismic Survey send a copy of your **Lease Agreement**.
- Completed Application.**
- \$800 non-refundable application fee.** This is not in lieu of a permit agreement fee. Check should be made payable to BNSF Railway Company.
- One set of drawings** (no larger than 11 x 17) for the area to be occupied. (Include: streets, distance from tracks and streets, mileposts if available and any distinguishing land marks.) Please ensure all information is accurate, as each change will add an additional \$800 to the application fee.

Forward application and payments to:  
Jones Lang LaSalle  
Brokerage, Inc. Attn:  
Permit Services  
4200 Buckingham, Ste. 110  
Ft. Worth, TX 76155



**APPLICATION FOR ROADWAY SURFACING/RESURFACING**

Jones Lang LaSalle Brokerage, Inc.  
Attn: Permit Services  
4200 Buckingham Drive,  
Suite 100  
Fort Worth, TX 76155

Applicants Tax ID #  
or SS #

**Legal name** of company/municipality who will occupy the property: \_\_\_\_\_  
If a corporation, State in which \_\_\_\_\_ (If not incorporated, please attach name(s) of owners or partners.)  
incorporated: \_\_\_\_\_

Mailing Address: \_\_\_\_\_  
Daytime Phone: \_\_\_\_\_ FAX: \_\_\_\_\_  
Contact Name: \_\_\_\_\_ Email Address: \_\_\_\_\_

**Legal name** of Roadway Authority requesting work: \_\_\_\_\_  
If a corporation, State in which \_\_\_\_\_ (If not incorporated, please attach name(s) of owners or partners.)  
incorporated: \_\_\_\_\_

Mailing Address: \_\_\_\_\_  
Daytime Phone: \_\_\_\_\_ FAX: \_\_\_\_\_  
Contact Name: \_\_\_\_\_ Email Address: \_\_\_\_\_

Is this project **ARRA** funded? Yes  No   
Is applicant a condemning authority? Yes  No   
Is applicant a Railroad Shipper? Yes  No   
If yes, BNSF Marketing Rep. name: \_\_\_\_\_ Phone # \_\_\_\_\_  
Was this service requested by BNSF? Yes  No   
If yes, person requesting service: \_\_\_\_\_ Phone # \_\_\_\_\_  
Is this installation in conjunction with a track expansion project? Yes  No   
If yes, BNSF contact name: \_\_\_\_\_ Phone # \_\_\_\_\_

**Scope of services to be performed:** \_\_\_\_\_

Name of nearest town on RR \_\_\_\_\_ County \_\_\_\_\_ State \_\_\_\_\_  
Name of nearest roadway crossing RR \_\_\_\_\_

Location of proposed occupancy: \_\_\_\_\_ 1/4 Section \_\_\_\_\_ Township \_\_\_\_\_ Range \_\_\_\_\_  
Railroad Mile Post \_\_\_\_\_ Latitude \_\_\_\_\_ Longitude \_\_\_\_\_

How far from the track will the work be performed? \_\_\_\_\_ ft.  
Is work to be performed within 50 ft. of RR property? Yes  No  If yes, what percentage? \_\_\_\_\_

Area to be occupied: \_\_\_\_\_ ft. (x) \_\_\_\_\_ ft.  
Length of time for project: Date from: \_\_\_\_\_ Date to: \_\_\_\_\_

|  |                              |                                 |
|--|------------------------------|---------------------------------|
| Will a crossing under the railroad tracks be required? | Yes <input type="checkbox"/> | No <input type="checkbox"/>     |
| If yes, location of railroad milepost(s)               | _____                        |                                 |
| Percentage of project to be conducted on RR property:  | _____ %                      | Total cost of project: \$ _____ |

Attached to this sheet is a location plan and detailed sketch. Shown on the sketch are exact dimensions of the project area and distances to the centerline of the nearest track and road crossing bridge or other railroad structure.

Date: \_\_\_\_\_  
Signed: \_\_\_\_\_  
Print Name: \_\_\_\_\_  
Title: \_\_\_\_\_  
Phone #: \_\_\_\_\_ Fax #: \_\_\_\_\_

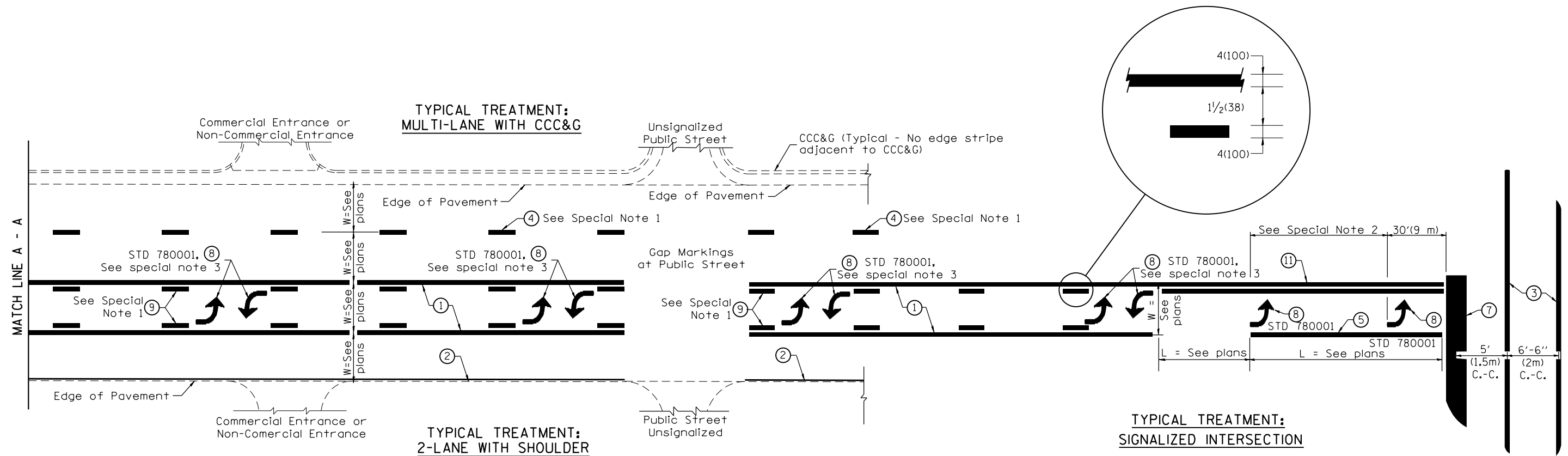
If you require additional assistance, please contact your **Jones Lang LaSalle Brokerage, Inc.** representative.

|                       |            |           |
|-----------------------|------------|-----------|
| USER NAME = \$USERS   | DESIGNED - | REVISED - |
|                       | DRAWN -    | REVISED - |
| PLOT SCALE = \$SCALES | CHECKED -  | REVISED - |
| PLOT DATE = \$DATES   | DATE -     | REVISED - |

|                           |            |        |              |           |
|---------------------------|------------|--------|--------------|-----------|
| F.A.P. RTE.               | SECTION    | COUNTY | TOTAL SHEETS | SHEET NO. |
| 64                        | (48HV8)BDR | PEORIA | 10           | 8         |
| CONTRACT NO. 68F02        |            |        |              |           |
| ILLINOIS FED. AID PROJECT |            |        |              |           |



DESIGNER NOTES:  
1. Include State Standard 780001 (Typical Pavement Markings)



**FLUSH PAVED MEDIAN: TWO-WAY LEFT TURN LANE WITH ONE-WAY LEFT TURN LANE AT SIGNALIZED INTERSECTION**

**TYPICAL PAVEMENT MARKING LEGEND**

(Note: This is a District Standard Legend. Some elements may not apply to specific project.)

- ① 4(100) Solid (Yellow)
- ② 4(100) Solid (White)
- ③ 2-6(150) Crosswalk @ 6'-6" (2m)min C.-C. (White)  
2-8(200) Crosswalk @ 6'-6" (2m)min C.-C. (White) (When traffic signals are present.)
- ④ 6(150) Skip-Dash (White) (See Special Note 1)
- ⑤ 8(200) Solid (White)
- ⑥ 12(300) Diagonal (White) (Item ⑥ is shown on Std. 780001)
- ⑦ 24(600) Stop Bar (White)
- ⑧ Letters & Arrows (See Std. 780001 and Special Notes 2 & 3)
- ⑨ 4(100) Skip-Dash (Yellow) (See Special Note 1)
- ⑩ 12(300) Diagonal (Yellow) (See Table A) (See Table A)
- ⑪ 4(100) Double Solid (Yellow) (See Table A)

**SPECIAL NOTES**

1. Skip-Dash markings will be centered between both ends of city blocks and shall be placed in alignment transversely across the pavement.
2. The following shall apply to arrows located in one-way left turn lanes:
  - A. A minimum of two (2) arrows is required.
  - B. The maximum spacing between arrows is 80' (24 m).
  - C. Arrows shall be evenly spaced if three (3) or more are required.
3. The following shall apply to arrow pairs located in two-way left turn lanes:
  - A. A minimum of two (2) arrow pairs is required.
  - B. The maximum spacing between arrow pairs is 200' (61 m).
  - C. Arrow pairs shall be evenly spaced if three (3) or more are required.
  - D. The spacing between Bi Directional Left Turn Arrows is 33' (10 m).

**GENERAL NOTES**

1. Refer to State Standard 780001 for additional Pavement Markings including letters & arrows.
2. See Plans for Pavement Markings adjacent to curbed islands and medians, and through lane reductions.
3. Refer to Article 780.13 for letter, number and symbol areas (sq. ft.)
4. Areas are grooved 1" beyond each edge for the following symbols:
  - Through Arrow= 14.8 sq. ft.
  - Large Left or Right Arrow= 21.9 sq. ft.
  - 2 Arrow Combination Left (or Right) and Through= 34.9 sq. ft.
  - Wrong Way Arrow= 29.5 sq. ft.
  - Railroad Crossing Symbol= 69.8 sq. ft.
 (For further information, refer to BDE Special Provision: Grooving for Recessed Pavement Markings)

|          |                                  |      |          |                       |      |
|----------|----------------------------------|------|----------|-----------------------|------|
| 01-01-97 | RENUM. F-8.03, NEW REVISION BOX  | T.P. | 10-16-06 | REVISED TO 2007 SPEC. |      |
| 02-07-97 | ADD BI DIRECTIONAL DIMENSION     | J.A. | 2/29/16  | ADDED GROOVING AREAS  | R.D. |
| 10-97    | CORRECT BI DIRECTIONAL DIMENSION | J.A. |          |                       |      |
| 08-02    | ADD CROSSWALK DMNS. WITH T.S.    | M.A. |          |                       |      |

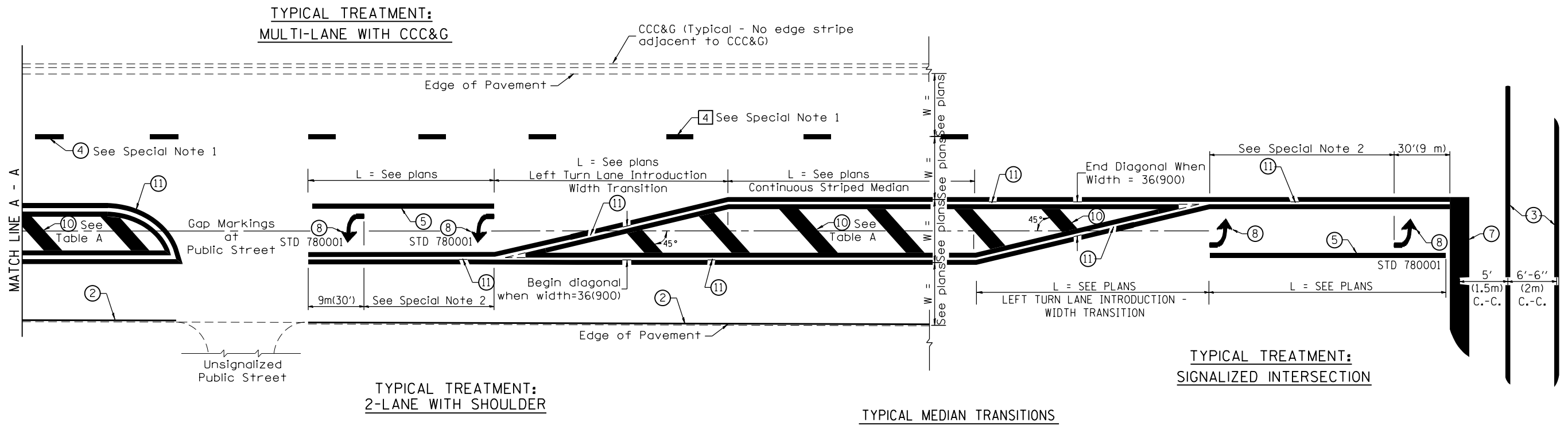
**STATE OF ILLINOIS  
DEPARTMENT OF TRANSPORTATION**

NOT TO SCALE

**TYPICAL PAVEMENT MARKINGS**

SHT. 1 OF 2  
CADD STD. 780001-D4

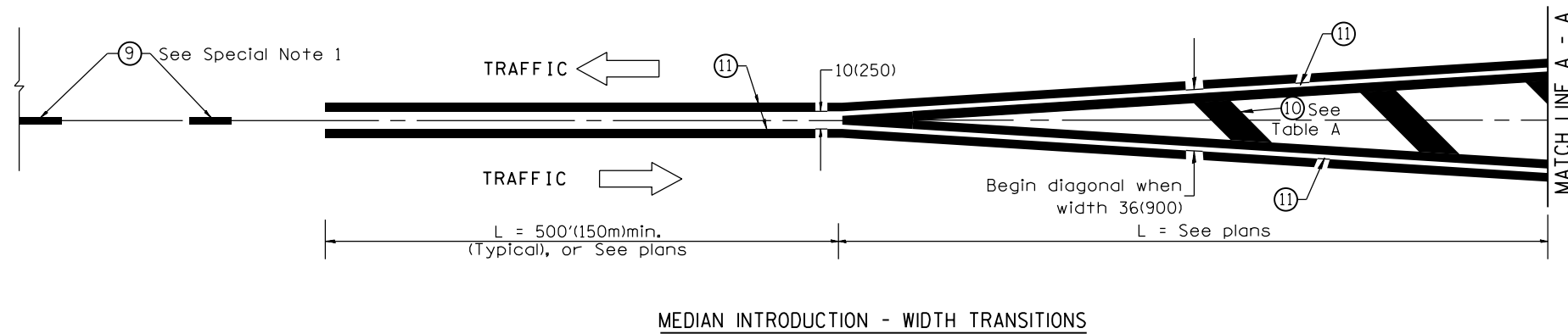
| F.A.P. RTE.                                   | SECTION   | COUNTY | TOTAL SHEETS | SHEET NO. |
|---|-----------|--------|--------------|-----------|
| 64  | (48HV)BDR | PEORIA | 10           | 9         |
| CONTRACT NO. 68F02                            |           |        |              |           |
| FED. ROAD DIST. NO. ILLINOIS FED. AID PROJECT |           |        |              |           |



**FLUSH PAVED MEDIAN: RESTRICTED LEFT TURN LANE**

**TABLE A**  
RECOMMENDED SPACING BETWEEN DIAGONAL LINES

| SPEED LIMIT RANGE          | INTERSECTION CHANNELIZATION<br>(Includes Width Transitions for Median and Left Turn Lane Introductions) |          |
|----------------------------|---|----------|
|                            | CONTINUOUS  |          |
| Less Than 30 mph (50 km/h) | 50' (15m)   | 15' (5m) |
| 30 - 45 mph (50 - 70 km/h) | 75' (23m)   | 20' (6m) |
| Over 45 mph (70 km/h)      | 150' (46m)  | 30' (9m) |



All dimensions are in inches (millimeters) unless otherwise noted.