

126

STATE OF ILLINOIS
DEPARTMENT OF TRANSPORTATION

PROPOSED
HIGHWAY PLANS

VARIOUS ROUTES
DIST 8 WEED SPRAYING 2019-3
WEED SPRAYING
VARIOUS COUNTIES

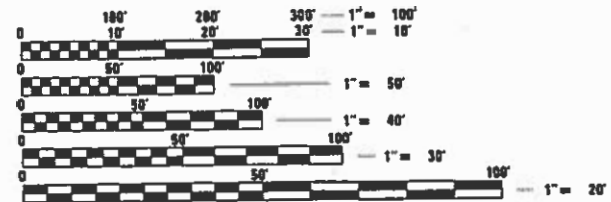
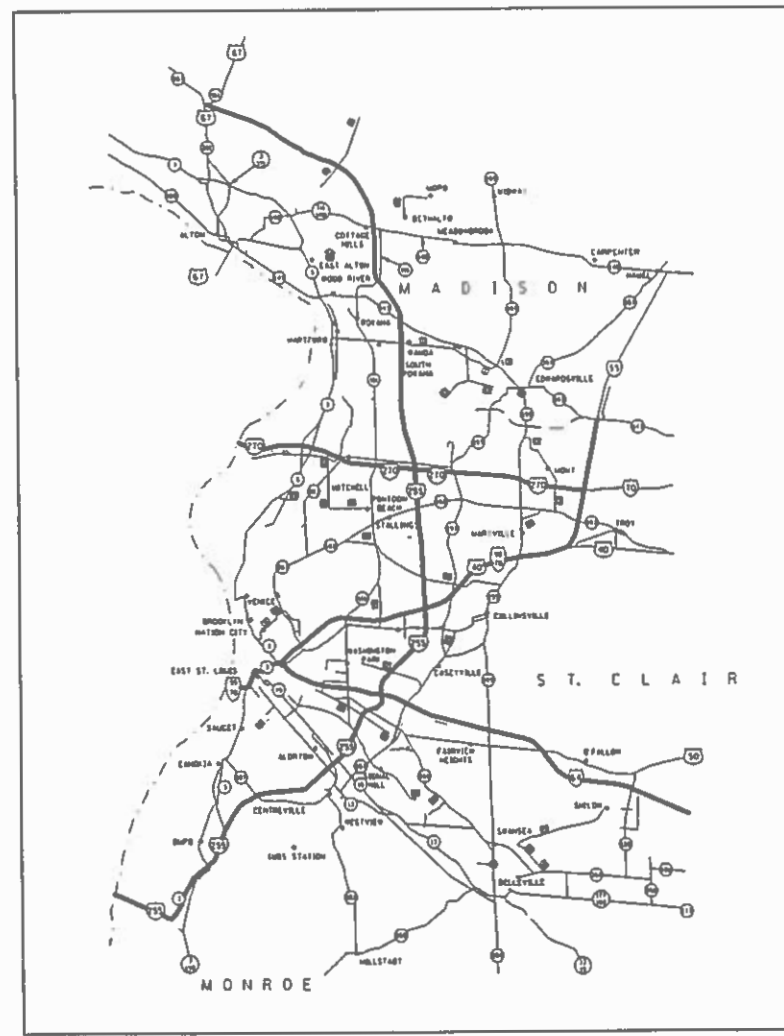
C-98-056-19

F.A. RTE.	SECTION	COUNTY	TOTAL SHEETS	SHEET NO.
*	**	VARIOUS	7	1
ILLINOIS CONTRACT NO. 76M27				

* VARIOUS
** DIST 8 WEED SPRAYING 2019-3
D-98-040-19

INDEX OF SHEETS

1. COVER SHEET, INDEX OF SHEETS, MAP
2. HIGHWAY STANDARDS, SPRAY SCHEDULE, AND COMMITMENTS
3. SUMMARY OF QUANTITIES
- 4.-7. OMISSIONS/NO SPRAY SITES



FULL SIZE PLANS HAVE BEEN PREPARED USING STANDARD ENGINEERING SCALES. REDUCED SIZED PLANS WILL NOT CONFORM TO STANDARD SCALES. IN MAKING MEASUREMENTS ON REDUCED PLANS, THE ABOVE SCALES MAY BE USED.

J.U.L.I.E.
JOINT UTILITY LOCATION INFORMATION FOR EXCAVATION
1-800-892-0123
OR 811

PROJECT ENGINEER: HERVE GELIN (618) 346-3179
SQUAD LEADER: BILLIE OWEN (618) 346-3209
PROJECT MANAGER: AL SCHULER (618) 349-2188
CONTRACT NO. 76M27

STATE OF ILLINOIS
DEPARTMENT OF TRANSPORTATION

SUBMITTED March 13, 2019
Kent Roberts
REGIONAL ENGINEER

May 10, 2019
[Signature]
ENGINEER OF DESIGN AND ENVIRONMENT

May 10, 2019
[Signature]
DIRECTOR OF HIGHWAYS PROJECT IMPLEMENTATION

PRINTED BY THE AUTHORITY
OF THE STATE OF ILLINOIS

STANDARDS

701001-02
 701006-05
 701101-05
 701106-02
 701301-04
 701426-09
 701901-08

COMMITMENTS
 NONE

DISTRICT 8 WEED SPRAYING 2019-3			
COUNTY	ROUTE	MILES	ACRES
MADISON	FAI 55/70	30	182
	FAI 270	22	133
	FAI 255*	21	127
	ROUTE 255*	52	315
	FAI 55	20	121
ST. CLAIR	FAI 64	26	158
	FAI 255*	35	212
MONROE	FAI 255*	20	121
TOTAL		226	1370

50' SWATH
 *TO INCLUDE MEDIANS WHERE FEASIBLE

IT IS ESTIMATED THAT THE CONTRACTOR WILL NEED 55 GALLONS OF "METHOD", OR APPROVED EQUIVALENT, 55 GALLONS OF "MILESTONE", OR APPROVED EQUIVALENT, AND 30 POUNDS OF "ESCORT", OR APPROVED EQUIVALENT FOR HERBICIDE SPRAYING. OFF ROAD AND ON ROAD QUANTITIES ARE APPROXIMATE AND ARE SUBJECT TO CHANGE.

• VARIOUS
 •• DIST 8 WEED SPRAYING 2019-3

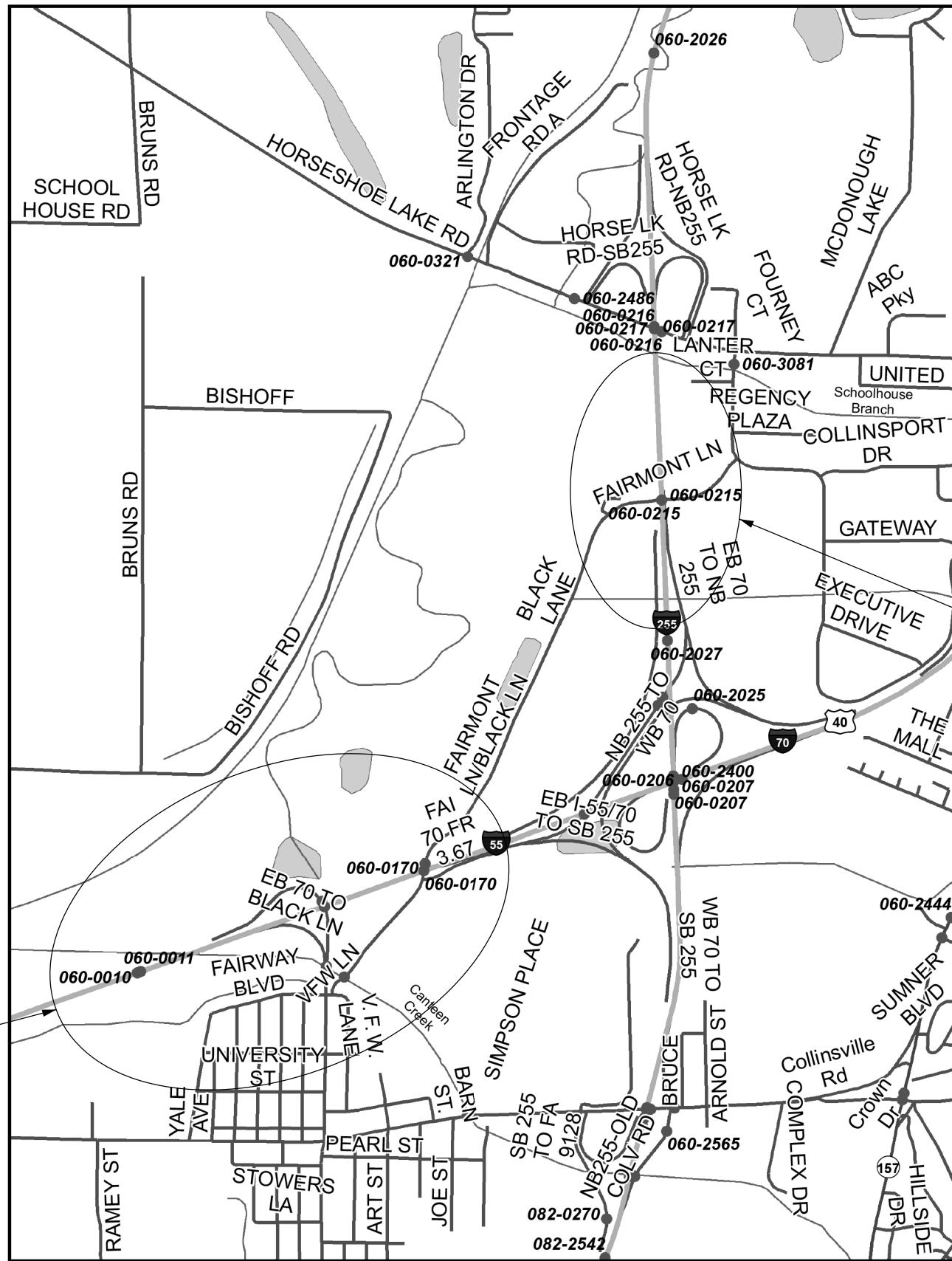
FILE NAME =	USER NAME = lewisko	DESIGNED -	REVISED -	STATE OF ILLINOIS DEPARTMENT OF TRANSPORTATION	HIGHWAY STANDARDS, SPRAY SCHEDULE, AND COMMITMENTS	F.A. RTE.	SECTION	COUNTY	TOTAL SHEETS	SHEET NO.
pw:\planroom.dot.illinois.gov\PIDOT\Documents\IDOT Offices\District 8\Projects\D876M27\DRAN\to\CADsheets\D876M27-sht-gennote.d		CHECKED -	REVISED -			•	••	MADISON	7	2
Default	PLOT SCALE = 100.0000' / in.	DATE -	REVISED -					CONTRACT NO. 76M27		
	PLOT DATE = 3/13/2019	DATE -	REVISED -			SCALE:	SHEET OF SHEETS	STA. TO STA.	ILLINOIS FED. AID PROJECT	

MODEL: Default
 FILE: \\nrcs-pix\plannerroom\data\illinois.gov\PWIDOT\Documents\DOT_Offices\District 8\Projects\IDF76M27\CADD\ba\CAD\sheets\IDF76M27-shc-500.dgn

CODE NO.	ITEM	UNIT	TOTAL QUANTITY	CONSTR. CODE
				URBAN 100% STATE
				0031
67100100	MOBILIZATION	L SUM	1	1
K0012950	HERBICIDE SPRAYING	ACRE	1370	1370

- VARIOUS
- DIST 8 WEED SPRAYING 2019-3

USER NAME = lewiska	DESIGNED -	REVISED -	STATE OF ILLINOIS DEPARTMENT OF TRANSPORTATION	SUMMARY OF QUANTITIES				F.A. RTE.	SECTION	COUNTY	TOTAL SHEETS	SHEET NO.
	DRAWN -	REVISED -						-	**	VARIES	7	3
PLOT SCALE = 100.0000' / in.	CHECKED -	REVISED -		SCALE: SHEET OF SHEETS STA. TO STA.				CONTRACT NO. 76M27				
PLOT DATE = 3/13/2019	DATE -	REVISED -		ILLINOIS FED. AID PROJECT								



DO NOT SPRAY

DO NOT SPRAY

MADISON COUNTY
LEVEE LAKE
SECTION 36, T3N-R9W

- VARIOUS
- DIST 8 WEED SPRAYING 2019-3

MODEL: Default
 FILE: Name: P:\pub\lanroom.dwg
 PROJECT: 0676M27_CADD\Drawings\DOT_Offices\Drawings\DOT_0676M27_Sht-24a.dwg

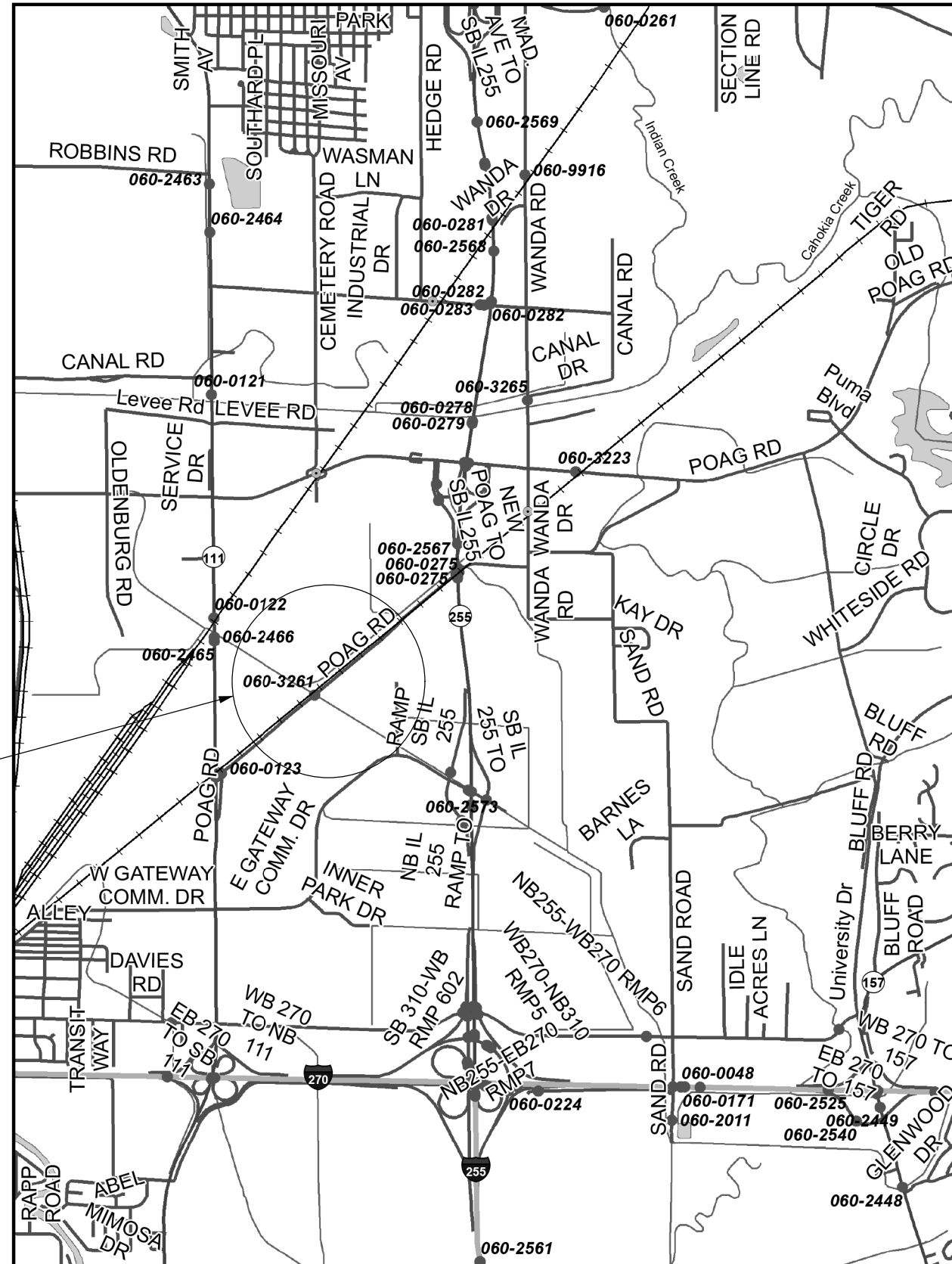
USER NAME = lewiska	DESIGNED -	REVISED -
	DRAWN -	REVISED -
PLOT SCALE = 100,000' / in.	CHECKED -	REVISED -
PLOT DATE = 3/13/2019	DATE -	REVISED -

**STATE OF ILLINOIS
DEPARTMENT OF TRANSPORTATION**

OMISSIONS NAMEOKI AND GRANITE TOWNSHIP

SCALE: SHEET OF SHEETS STA. TO STA.

F.A. RTE.	SECTION	COUNTY	TOTAL SHEETS	SHEET NO.
-	**	VARIES	7	4
CONTRACT NO. 76M27				
		ILLINOIS	FED. AID PROJECT	



DO NOT SPRAY

MADISON COUNTY
POAG R.R. PRAIRIE
SECTION 24, T4N-R9W

- VARIOUS
- DIST 8 WEED SPRAYING 2019-3

MODEL: Default
 FILE: MadCo_PrairieMaproom.dwg
 PROJECT: 0676M27_CADDData\CADDsheets\0676M27-8hc-246a.dgn

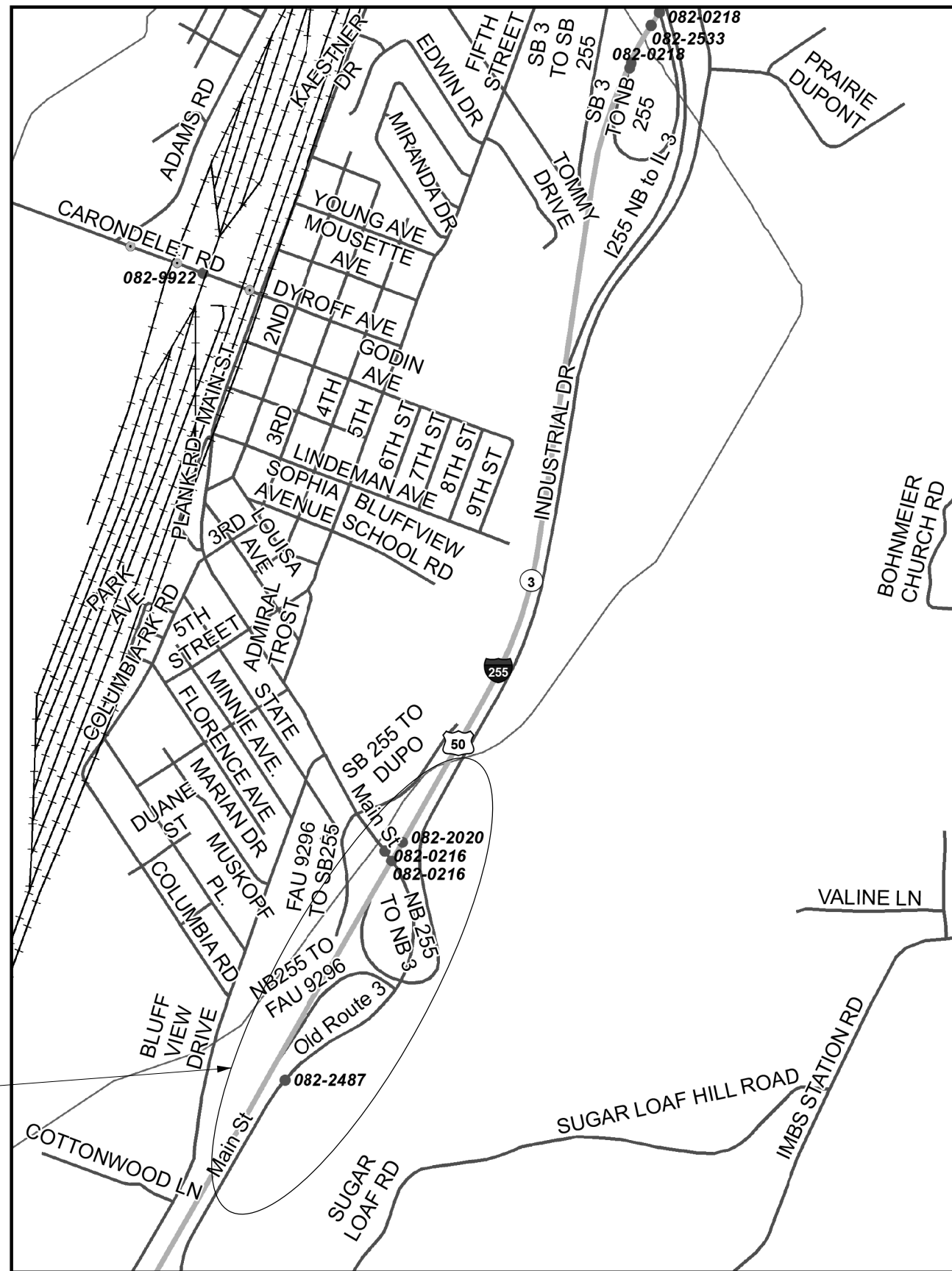
USER NAME = lewiska	DESIGNED -	REVISED -
	DRAWN -	REVISED -
PLOT SCALE = 100,0000' / in.	CHECKED -	REVISED -
PLOT DATE = 3/13/2019	DATE -	REVISED -

**STATE OF ILLINOIS
DEPARTMENT OF TRANSPORTATION**

**OMISSONS CHOUTEAU &
GRANITE CITY TOWNSHIP**

SCALE: SHEET OF SHEETS STA. TO STA.

F.A. RTE.	SECTION	COUNTY	TOTAL SHEETS	SHEET NO.
-	**	VARIES	7	5
CONTRACT NO. 76M27				
ILLINOIS FED. AID PROJECT				



DO NOT SPRAY

ST. CLAIR COUNTY
DUPO PRAIRIE/SUGAR LOAF PRAIRIE
SECTION 27 & 28, T1N-R10W

- VARIOUS
- DIST 8 WEED SPRAYING 2019-3

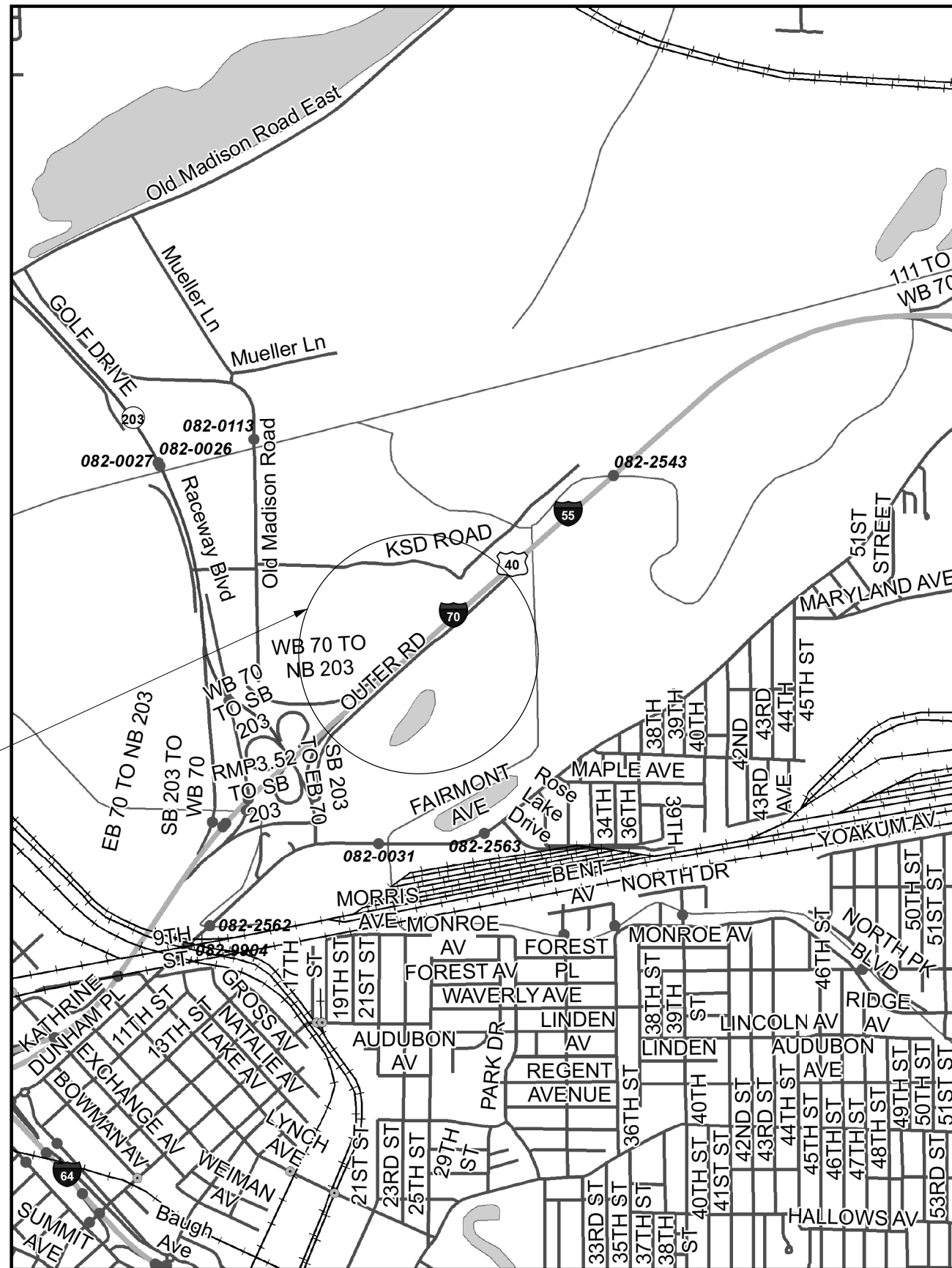
USER NAME = lewiska	DESIGNED -	REVISED -
	DRAWN -	REVISED -
PLOT SCALE = 100,0000' / in.	CHECKED -	REVISED -
PLOT DATE = 3/13/2019	DATE -	REVISED -

STATE OF ILLINOIS
DEPARTMENT OF TRANSPORTATION

SCALE: SHEET OF SHEETS STA. TO STA.

OMISSIONS
SUGAR LOAF TOWNSHIP

F.A. RTE.	SECTION	COUNTY	TOTAL SHEETS	SHEET NO.
-	**	VARIES	7	6
CONTRACT NO. 76M27				
ILLINOIS FED. AID PROJECT				



DO NOT SPRAY

ST. CLAIR COUNTY
FAIRMONT CITY SITE
T1N-R9W

- VARIOUS
- DIST 8 WEED SPRAYING 2019-3

MODEL: Default
 FILE: N:\MISC_Plan\planroom.dwg
 PROJECT: 082-76M27-CADD\Drawings\DOT_Offices\Drawings\082-76M27-2-18-2019.dwg

USER NAME = lewiska	DESIGNED -	REVISED -
	DRAWN -	REVISED -
PLOT SCALE = 100,0000' / in.	CHECKED -	REVISED -
PLOT DATE = 3/13/2019	DATE -	REVISED -

**STATE OF ILLINOIS
DEPARTMENT OF TRANSPORTATION**

**OMISSIONS
FAIRMONT CITY SITE**

SCALE: SHEET OF SHEETS STA. TO STA.

F.A. RTE.	SECTION	COUNTY	TOTAL SHEETS	SHEET NO.
-	**	VARIABLE	7	7
CONTRACT NO. 76M27				
ILLINOIS FED. AID PROJECT				