

128

06-14-2019 LETTING ITEM 128

STATE OF ILLINOIS
DEPARTMENT OF TRANSPORTATION

F.A.P. ATE.	SECTION	COUNTY	TOTAL SHEETS	SHEET NO.
312	121PP-1	RANDOLPH	8	1
ILLINOIS CONTRACT NO. 76M32				

FOR INDEX OF SHEETS, SEE SHEET NO. 2

TRAFFIC DATA	
LOCATION	IL 3
2019 ADT	3950 (ACTUAL)
2039 ADT	4350 (ESTIMATED)
MU%	17.9
SU%	2.3

LOCATION	IL 3 /IL 150
2019 ADT	6550 (ACTUAL)
2039 ADT	7200 (ESTIMATED)
MU%	22.5
SU%	1.4

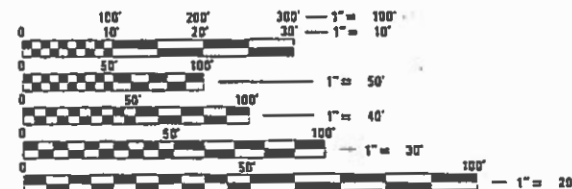
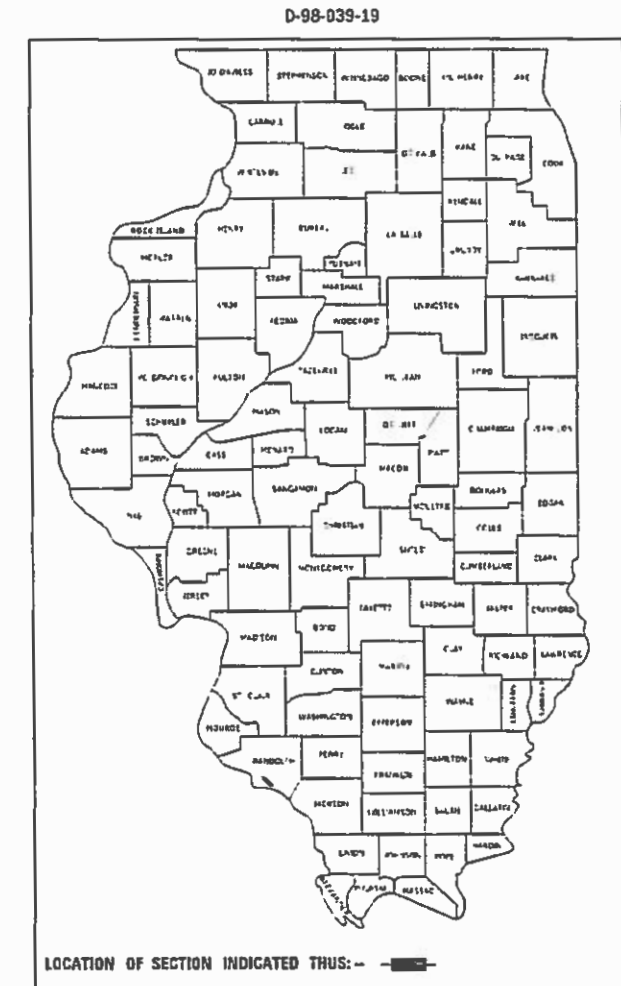
FUNCTIONAL CLASSIFICATION: OTHER ARTERIAL

PROPOSED HIGHWAY PLANS

FAP ROUTE 312 (IL 3/IL 150)
SECTION 121PP-1

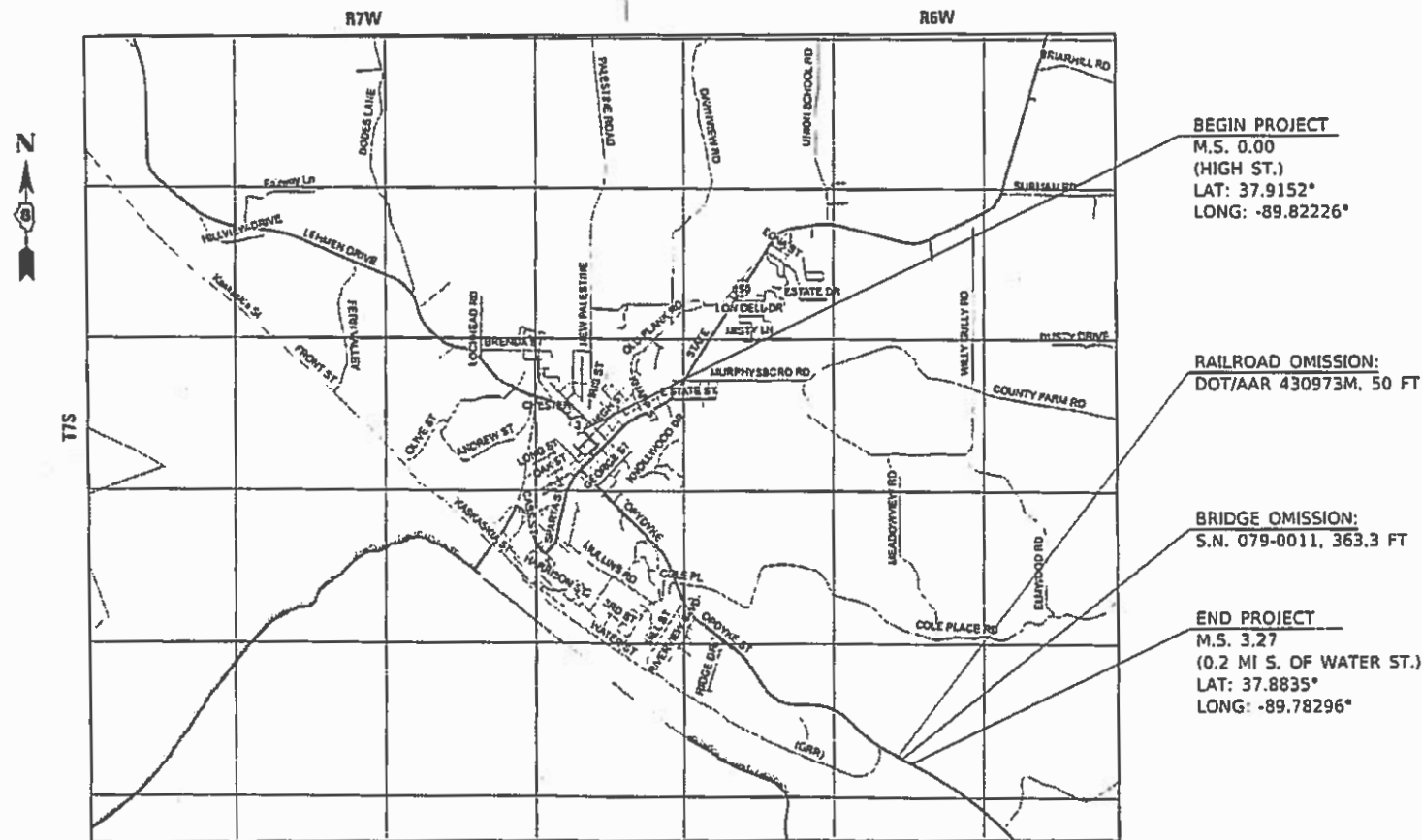
PATCHING PROJECT
RANDOLPH COUNTY

C-98-052-19



FULL SIZE PLANS HAVE BEEN PREPARED USING STANDARD ENGINEERING SCALES. REDUCED SIZED PLANS WILL NOT CONFORM TO STANDARD SCALES. IN MAKING MEASUREMENTS ON REDUCED PLANS, THE ABOVE SCALES MAY BE USED.

J.U.L.I.E.
JOINT UTILITY LOCATION INFORMATION FOR EXCAVATORS
1-800-892-0123
OR 811



LOCATION MAP



GROSS LENGTH = 17,265.60 FT. = 3.27 MILE
NET LENGTH = 16,852.30 FT. = 3.19 MILE

PROJECT ENGINEER: TIM PADGETT (618) 346-3325
PROJECT MANAGER: RAHSHUN J. MILLER (618) 346-3196

CONTRACT NO. 76M32

STATE OF ILLINOIS
DEPARTMENT OF TRANSPORTATION

SUBMITTED March 18 2019
K. Roberts REGIONAL ENGINEER
May 10 2019
Paul P. Chif ENGINEER OF DESIGN AND ENVIRONMENT
DIRECTOR OF HIGHWAYS PROJECT IMPLEMENTATION 3

PRINTED BY THE AUTHORITY
OF THE STATE OF ILLINOIS

INDEX OF SHEETS

1	COVER
2	INDEX OF SHEETS, STANDARDS, GENERAL NOTES & COMMITMENTS
3	SUMMARY OF QUANTITIES
4-5	TYPICAL SECTIONS
6	SCHEDULE OF QUANTITIES
7	DETAIL SHEET
8	LOCATION MAP

STANDARDS

000001-07	STANDARD SYMBOLS, ABBREVIATIONS AND PATTERNS
001006	DECIMAL OF AN INCH AND OF A FOOT
420701-03	PAVEMENT WELDED WIRE REINFORCEMENT
442101-09	CLASS B PATCHES
701201-05	LANE CLOSURE, 2L, 2W, DAY ONLY, FOR SPEEDS \geq 45 MPH
701301-04	LANE CLOSURE, 2L, 2W SHORT TERM OPERATIONS
701311-03	LANE CLOSURE, 2L, 2W, MOVING OPERATIONS - DAY ONLY
701336-07	LANE CLOSURE, 2L, 2W WORK AREAS IN SERIES, FOR SPEEDS \geq 45 MPH
701501-06	URBAN LANE CLOSURE, 2L, 2W UNDIVIDED
701901-08	TRAFFIC CONTROL DEVICES
780001-05	TYPICAL PAVEMENT MARKINGS
781001-04	TYPICAL APPLICATIONS RAISED REFLECTIVE PAVEMENT MARKERS

COMMITMENTS

NO WORK IS TO BE DONE DURING THE TIME OF FRIDAY SEPTEMBER 6TH, 2019 TO SUNDAY SEPTEMBER 8TH, 2019 DUE TO THE CITY OF CHESTER'S ANNUAL FESTIVAL.

GENERAL NOTES

- ILLINOIS STATE LAW REQUIRES A 48-HOUR NOTICE TO BE GIVEN TO UTILITIES BEFORE DIGGING. FIELD MARKING OF FACILITIES MAY BE OBTAINED BY CONTACTING J.U.L.I.E. (1-800-892-0123 OR 811) OR FOR NON-MEMBERS THE UTILITY COMPANY DIRECTLY.
- THE CONTRACTOR AND THE ENGINEER SHALL BE AWARE THAT NO SURVEY WAS PERFORMED FOR THIS PROJECT, THE STATIONING, TOPOGRAPHY AND QUANTITIES SHOWN ON THESE PLANS WERE CREATED USING MICROFILM AND FIELD MEASUREMENTS. ALL SHALL BE ASSUMED TO BE APPROXIMATE. THE CONTRACTOR SHALL VERIFY DIMENSIONS AND CONDITIONS IN THE FIELD PRIOR TO CONSTRUCTION AND ORDERING OF MATERIALS.
- NO OVERNIGHT LANE CLOSURES WILL BE PERMITTED.
- FLAGGERS SHALL BE REQUIRED AT ALL TIMES DURING PATCHING OPERATIONS.
- THE PROPOSED PAVEMENT MARKING SHALL MATCH THE LOCATIONS OF THE EXISTING PAVEMENT MARKING, AS DIRECTED BY THE ENGINEER.
- NO PATCHING SHALL BE DONE WITHIN 25' OF ANY RAILROAD CROSSING.
- HIGH EARLY STRENGTH CONCRETE FOR CLASS B PATCHES WILL BE ALLOWED.
- CONTACT KNIGHT HAWK COAL 48 HOURS PRIOR TO THE COMMENCEMENT OF WORK. CONTACT JEANIE COLEMAN AT OFFICE: (618) 346-3662 EXT. 337

MODEL: Default
 FILE: MainE_Planroom.dwg
 I:\Projects\DOT\Documents\DOT_Offices\District 8\Projects\IDB76M32\CADData\CADsheets\IDB76M32-2ht-cover.dgn

REV. - MS

USER NAME = millerraj	DESIGNED -	REVISED -	STATE OF ILLINOIS DEPARTMENT OF TRANSPORTATION	INDEX OF SHEETS, STANDARDS GENERAL NOTES & COMMITMENTS	F.A.P. RTE.	SECTION	COUNTY	TOTAL SHEETS	SHEET NO.	
PLOT SCALE = 100.0000' / in.	DRAWN -	REVISED -			312	121PP-1	RANDOLPH	8	2	
PLOT DATE = 3/21/2019	CHECKED -	REVISED -			CONTRACT NO. 76M32					
	DATE -	REVISED -			SCALE: NTS	SHEET 1 OF 1 SHEETS	STA.	TO STA.	ILLINOIS FED. AID PROJECT	

CODE NO.	ITEM	UNIT	TOTAL QUANTITY	CONSTRUCTION CODE	
				ROADWAY 0006	ROADWAY 0006
				URBAN	RURAL
21001000	GEOTECHNICAL FABRIC FOR GROUND STABILIZATION	SQ YD	2237	1628	609
31101400	SUBBASE GRANULAR MATERIAL, TYPE B 6"	SQ YD	2237	1628	609
44200050	WELDED WIRE REINFORCEMENT	SQ YD	2237	1628	609
44201297	DOWEL BARS 1"	EACH	862	515	347
44213200	SAW CUTS	FOOT	3086	2153	933
44213204	TIE BARS 3/4"	EACH	880	630	250
67000400	ENGINEER'S FIELD OFFICE, TYPE A	CAL MO	4	3	1
67100100	MOBILIZATION	L SUM	1	0.6	0.4
70100450	TRAFFIC CONTROL AND PROTECTION, STANDARD 701201	L SUM	1	0.6	0.4
70100600	TRAFFIC CONTROL AND PROTECTION, STANDARD 701336	L SUM	1	0.6	0.4
70102620	TRAFFIC CONTROL AND PROTECTION, STANDARD 701501	L SUM	1	0.6	0.4
* 78001110	PAINT PAVEMENT MARKING - LINE 4"	FOOT	2879	2224	655
* 78100100	RAISED REFLECTIVE PAVEMENT MARKER	EACH	16	12	4
X1700008	CLASS B PATCHES, TYPE II, 12 INCH (SPECIAL)	SQ YD	69	38	31

CODE NO.	ITEM	UNIT	TOTAL QUANTITY	CONSTRUCTION CODE	
				ROADWAY 0006	ROADWAY 0006
				URBAN	RURAL
X1700030	CLASS B PATCHES, TYPE III, 12 INCH (SPECIAL)	SQ YD	145	68	77
X4421021	CLASS B PATCHES, TYPE IV, 12 INCH, SPECIAL	SQ YD	2023	1522	501

* SPECIALTY ITEM

USER NAME = millerraj	DESIGNED -	REVISED -
PLOT SCALE = 100.0000' / in.	DRAWN -	REVISED -
PLOT DATE = 3/21/2019	CHECKED -	REVISED -
	DATE -	REVISED -

**STATE OF ILLINOIS
DEPARTMENT OF TRANSPORTATION**

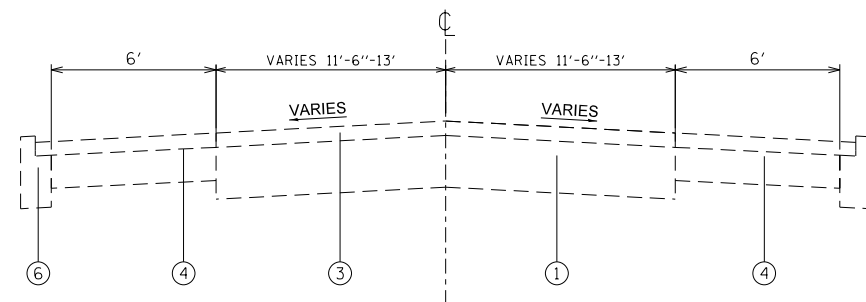
SUMMARY OF QUANTITIES

SCALE: NTS SHEET 1 OF 1 SHEETS STA. TO STA.

F.A.P. RTE.	SECTION	COUNTY	TOTAL SHEETS	SHEET NO.
312	121PP-1	RANDOLPH	8	3
CONTRACT NO. 76M32				
ILLINOIS FED. AID PROJECT				

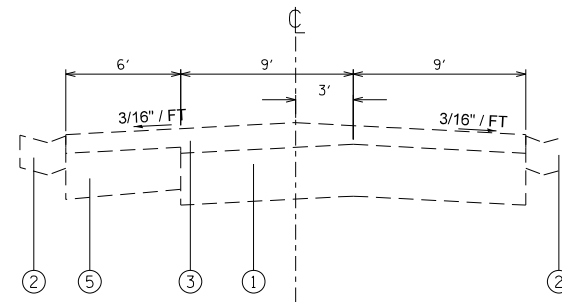
REV. - MS

MODEL: Default
 FILE: M:\MIS\p\1\p1\room.dat
 I:\Illinois.gov\PWIDOT\Documents\DOT_Offices\District 8\Projects\0876M32\CADData\CADsheets\0876M32-2ht-cover.dgn



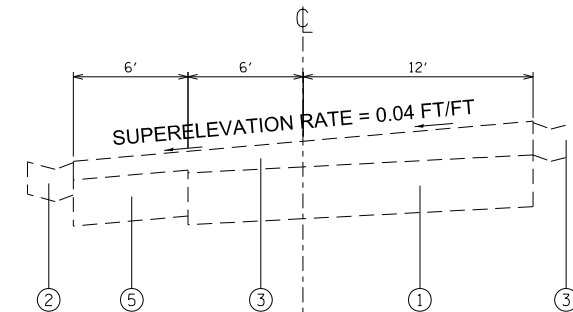
IL 3/IL 150 TYPICAL SECTION

M.S. 0.00 TO M.S. 0.30



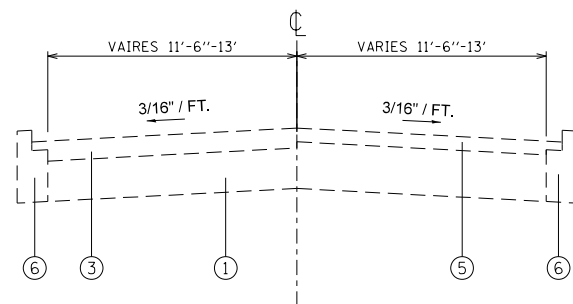
IL 3 TANGENT SECTION

M.S. 0.68 (CROSBY ST.) TO M.S. 0.74



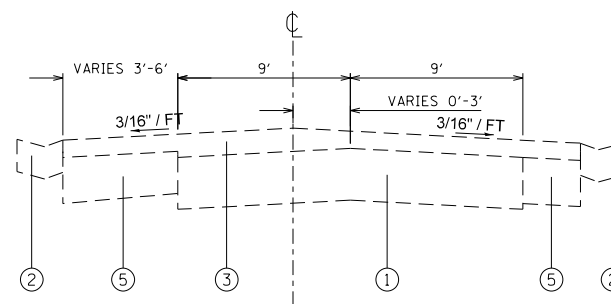
IL 3 SUPERELEVATION SECTION

M.S. 1.00 TO M.S. 1.12



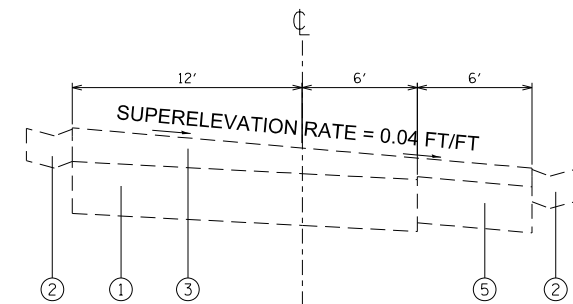
IL 3 TANGENT SECTION

M.S. 0.30 TO M.S. 0.60
(IL 150 TO FREDERICK ST.)



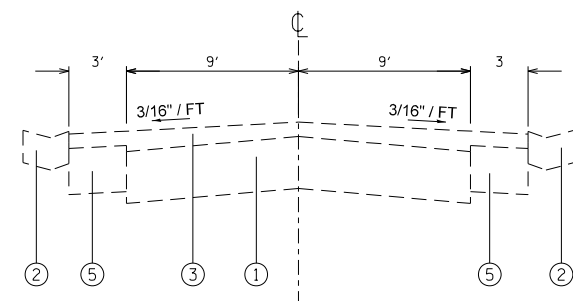
IL 3 TANGENT SECTION

M.S. 0.74 TO M.S. 0.79



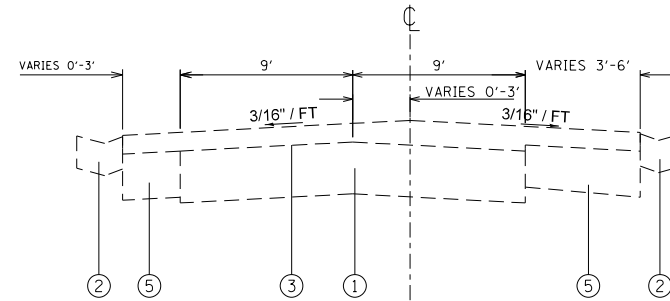
IL 3 SUPERELEVATION SECTION

M.S. 1.32 TO M.S. 1.37



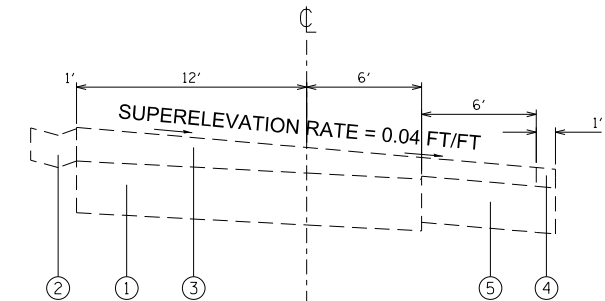
IL 3 TANGENT SECTION

M.S. 0.60 TO M.S. 0.68
(FREDERICK ST. TO CROSBY ST.)



IL 3 TANGENT SECTION

M.S. 0.79 TO M.S. 0.93



IL 3 SUPERELEVATION SECTION

M.S. 1.37 TO M.S. 1.51

LEGEND

- ① EXISTING PCC PAVEMENT
- ② EXISTING CONCRETE GUTTER, TYPE B
- ③ EXISTING HOT-MIX ASPHALT SURFACE, VARIABLE DEPTH
- ④ EXISTING HOT-MIX ASPHALT SHOULDER
- ⑤ EXISTING PCC BASE COURSE WIDENING
- ⑥ EXISTING CURB
- ⑦ EXISTING AGGREGATE SHOULDER

IL 3 TANGENT SECTION

M.S. 0.83 TO M.S. 1.00
M.S. 1.12 TO M.S. 1.32

MODEL: Default
 FILE: \\nrcs-pix\pub\room\dat\illinois.gov\PIWDOT\Documents\DOT_Offices\District 8\Projects\ID0776M32\CADD\Drawn\CAD\Drawn\ID0776M32-2hc-cover.dgn

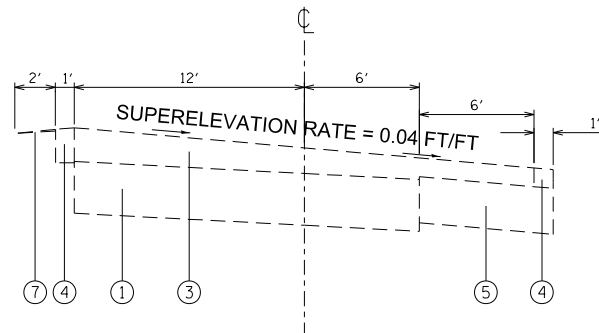
USER NAME = millerraj	DESIGNED -	REVISED -
	DRAWN -	REVISED -
PLOT SCALE = 100.0000' / in.	CHECKED -	REVISED -
PLOT DATE = 3/21/2019	DATE -	REVISED -

**STATE OF ILLINOIS
DEPARTMENT OF TRANSPORTATION**

TYPICAL SECTIONS

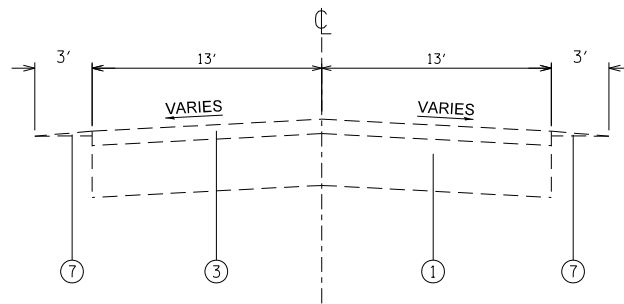
SCALE: NTS SHEET 1 OF 2 SHEETS STA. TO STA.

F.A.P. RTE.	SECTION	COUNTY	TOTAL SHEETS	SHEET NO.
312	121PP-1	RANDOLPH	8	4
CONTRACT NO. 76M32				
ILLINOIS FED. AID PROJECT				



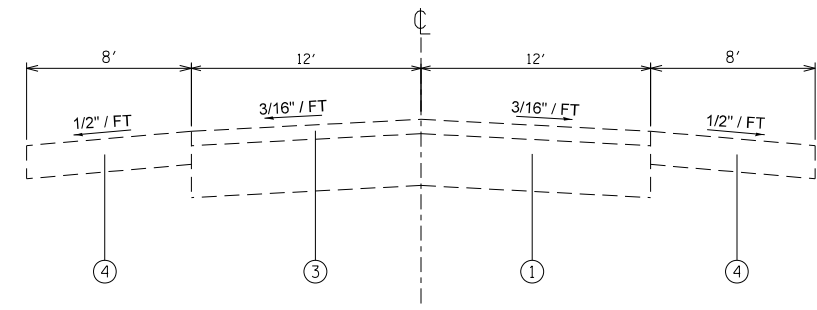
IL 3 SUPERELEVATION SECTION

M.S. 1.51 TO M.S. 1.60 (RIVERVIEW DR.)



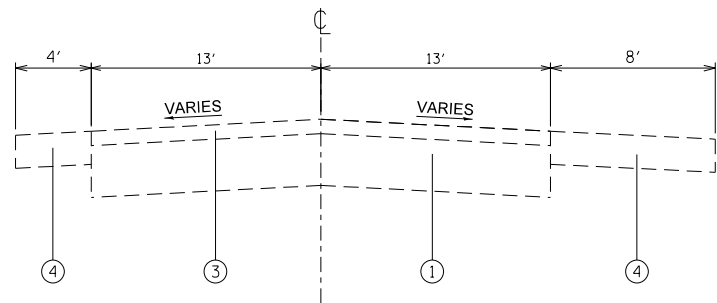
IL 3 TYPICAL SECTION

M.S. 1.81 TO M.S. 1.86
M.S. 2.05 TO M.S. 2.23
M.S. 2.30 TO M.S. 2.37
M.S. 2.45 TO M.S. 2.61



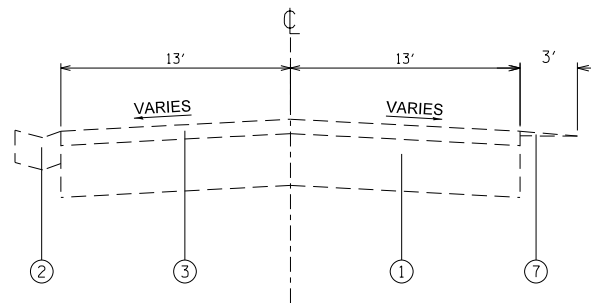
IL 3 TYPICAL SECTION

BRIDGE OMISSION: M.S. 3.13 TO M.S. 3.20
M.S. 3.20 TO M.S. 3.27



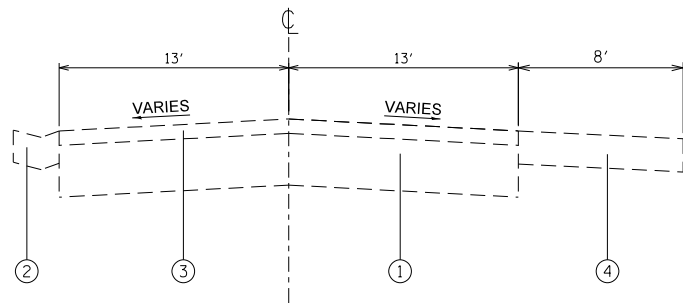
IL 3 TYPICAL SECTION

M.S. 1.60 (RIVERVIEW DR.) TO M.S. 1.70



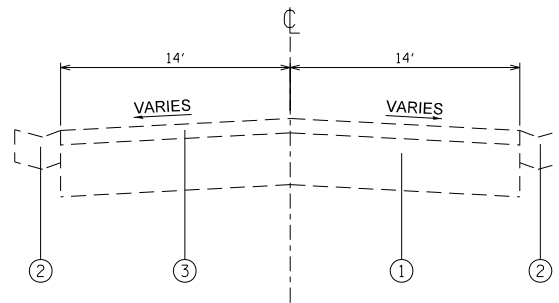
IL 3 TYPICAL SECTION

M.S. 2.37 TO M.S. 2.45



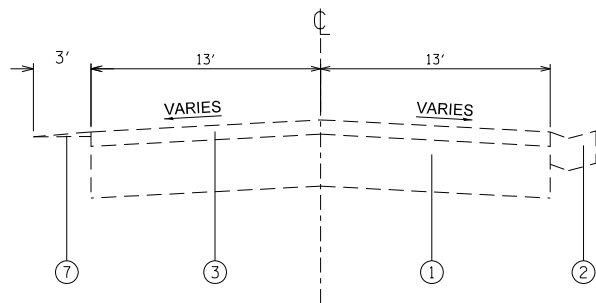
IL 3 TYPICAL SECTION

M.S. 1.70 TO M.S. 1.73



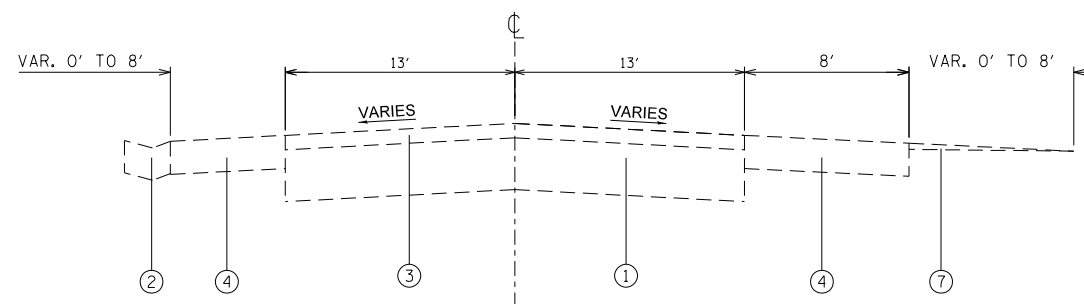
IL 3 TYPICAL SECTION

M.S. 2.61 TO M.S. 3.03



IL 3 TYPICAL SECTION

M.S. 1.73 TO M.S. 1.81
M.S. 1.86 TO M.S. 2.05
M.S. 2.23 TO M.S. 2.30



IL 3 TYPICAL SECTION

M.S. 3.03 TO M.S. 3.13

LEGEND

- ① EXISTING PCC PAVEMENT
- ② EXISTING CONCRETE GUTTER, TYPE B
- ③ EXISTING HOT-MIX ASPHALT SURFACE, VARIABLE DEPTH
- ④ EXISTING HOT-MIX ASPHALT SHOULDER
- ⑤ EXISTING PCC BASE COURSE WIDENING
- ⑥ EXISTING CURB
- ⑦ EXISTING AGGREGATE SHOULDER

MODEL: Default
 FILE: \\nrc-pixipharoom.dta\illinois.gov\PROJECTS\DOT Documents\DOT Offices\District 8\Projects\ID276M32\CADD\Drawings\ID276M32-28c-cover.dgn

USER NAME = millerraj	DESIGNED -	REVISED -
	DRAWN -	REVISED -
PLOT SCALE = 100.0000' / in.	CHECKED -	REVISED -
PLOT DATE = 3/21/2019	DATE -	REVISED -

**STATE OF ILLINOIS
DEPARTMENT OF TRANSPORTATION**

TYPICAL SECTIONS

SCALE: NTS SHEET 2 OF 2 SHEETS STA. TO STA.

F.A.P. RTE.	SECTION	COUNTY	TOTAL SHEETS	SHEET NO.
312	121PP-1	RANDOLPH	8	5
CONTRACT NO. 76M32				
ILLINOIS		FED. AID PROJECT		

MODEL: Default
 FILE: \\nrcs-pix\pub\room\dat\illinois.gov\PWIDOT\Documents\DOT_Offices\Bartlett_B\Projects\0776M32\CADD\Drawings\0776M32-2hc-cover.dgn

CLASS B (SPECIAL) PATCHING SCHEDULE													
MILE STATION		LANE		CLASS B PATCHING (SPECIAL)			SAW CUTS	DOWEL BARS	TIE BARS	GEOTECHNICAL FABRIC	SUBBASE GRANULAR MATERIAL, TYPE B 6"	WELDED WIRE REINFORCEMENT	
				TY-II	TY-III	TY-IV							
		LTH.	WTH.	SQ YDS	SQ YDS	SQ YDS	FT	EACH	EACH	SQ YDS	SQ YDS	SQ YDS	
SB	0.02	225	12			300	261	20	113	300	300	300	
SB	0.19	47	12			63	83	20	24	63	63	63	
SB	0.20	20	12			27	56	20	20	27	27	27	
SB	0.26	50	12			67	86	20	25	67	67	67	
SB	0.29	26	28			81	110	52	13	81	81	81	
SB	0.33	7	13	10			46	22	7	10	10	10	
SB	0.42	34	12			45	70	20	17	45	45	45	
SB	0.44	44	12			59	80	20	22	59	59	59	
SB	0.47	16	12		21		52	20	16	21	21	21	
SB	0.48	8	12	11			44	20	8	11	11	11	
SB	0.52	38	12			51	74	20	19	51	51	51	
SB	0.55	51	12			68	87	20	26	68	68	68	
SB	1.75	12	14		19		54	24	12	19	19	19	
SB	1.78	140	14			218	182	24	70	218	218	218	
SB	1.83	25	13			36	64	22	13	36	36	36	
SB	1.92	20	13			29	59	22	20	29	29	29	
SB	1.99	9	13	13			48	22	9	13	13	13	
SB	2.00	14	13		20		53	22	14	20	20	20	
SB	2.03	183	12			244	219	20	92	244	244	244	
SB	2.08	30	12			40	66	20	15	40	40	40	
SB	2.16	8	12	11			44	20	8	11	11	11	
SB	2.53	10	12	13			46	20	10	13	13	13	
SB	2.55	26	12			35	62	20	13	35	35	35	
SB	2.68	11	14		17		53	24	11	17	17	17	
SB	2.71	13	14		20		55	24	13	20	20	20	
SB	2.75	60	14			93	102	24	30	93	93	93	
SB	2.76	15	14		23		57	24	15	23	23	23	
SB	2.77	21	14			33	63	24	11	33	33	33	
SB	2.91	24	14			37	66	24	12	37	37	37	
SB	2.92	30	14			47	72	24	15	47	47	47	
SB	3.30	30	12			40	66	20	15	40	40	40	
SB	3.37	56	12			75	92	20	28	75	75	75	
SUB TOTAL:						58	121	1686	2572	718	733	1864	1864
PROJECTED FAILURES 20%						12	24	337	514	144	147	373	373
TOTAL:						69	145	2023	3086	862	880	2237	2237

PAVEMENT MARKING SCHEDULE				
MILE STATION	NB/SB	* 4" PAINT PAVEMENT MARKING		RAISED REFLECTIVE PAVEMENT MARKERS
		WHITE	YELLOW	TWO-WAY AMBER
		(FOOT)	(FOOT)	(EACH)
0.02	SB	450	56	3
0.19	SB	94	12	1
0.20	SB	40	5	0
0.26	SB	100	13	1
0.29	SB	52	7	0
0.33	SB	7	2	0
0.42	SB	68	9	0
0.44	SB	88	11	1
0.47	SB	32	4	0
0.48	SB	8	2	0
0.52	SB	76	10	0
0.55	SB	102	13	1
1.75	SB	24	3	0
1.78	SB	280	35	2
1.83	SB	50	6	0
1.92	SB	40	5	0
1.99	SB	9	2	0
2.00	SB	28	4	0
2.03	SB	366	46	2
2.08	SB	60	8	0
2.16	SB	8	2	0
2.53	SB	10	3	0
2.55	SB	52	7	0
2.68	SB	11	3	0
2.71	SB	26	3	0
2.75	SB	120	15	1
2.76	SB	30	4	0
2.77	SB	42	5	0
2.91	SB	48	6	0
2.92	SB	60	8	0
3.30	SB	60	8	0
3.37	SB	112	14	1
TOTAL:		2879		13

*PAINT PAVEMENT MARKING QUANTITY IS FOR EDGELINE AND CENTERLINE, AS DIRECTED BY THE ENGINEER.

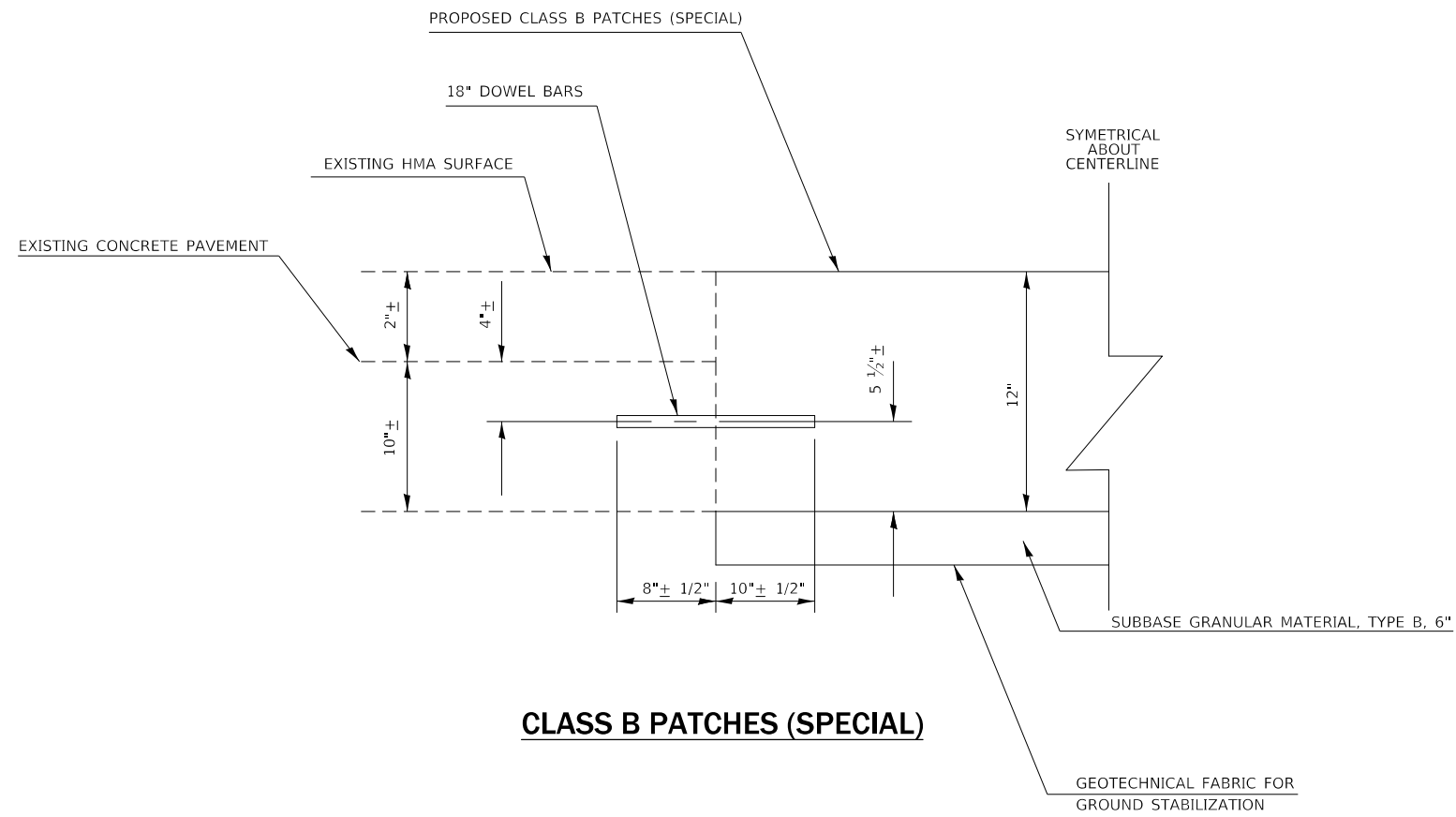
USER NAME = millerraj	DESIGNED -	REVISED -
	DRAWN -	REVISED -
PLOT SCALE = 100,0000 ' / in.	CHECKED -	REVISED -
PLOT DATE = 3/21/2019	DATE -	REVISED -

**STATE OF ILLINOIS
DEPARTMENT OF TRANSPORTATION**

SCHEDULE OF QUANTITIES

SCALE: NTS SHEET 1 OF 1 SHEETS STA. TO STA.

F.A.P. RTE.	SECTION	COUNTY	TOTAL SHEETS	SHEET NO.
312	121PP-1	RANDOLPH	8	6
CONTRACT NO. 76M32				
ILLINOIS FED. AID PROJECT				



CLASS B PATCHES (SPECIAL)

MODEL: Default
 FILE: \\nashc-pix\pub\room\dat\illinois.gov\PWIDOT\Documents\DOT_Offices\District 8\Projects\10776M32\CADD\ba\CAD\sheets\10776M32-cht-cover.dgn

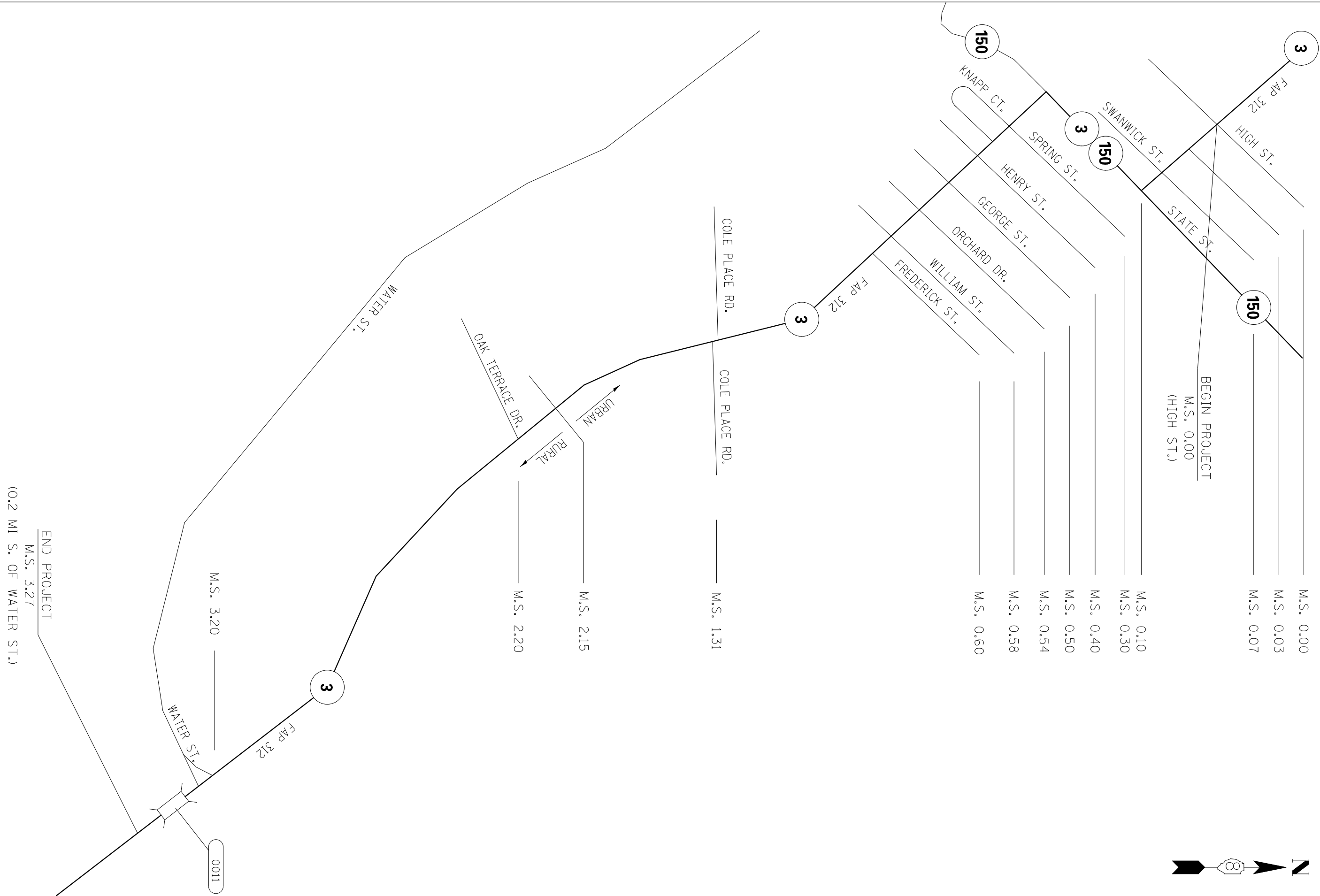
USER NAME = millerraj	DESIGNED -	REVISED -
	DRAWN -	REVISED -
PLOT SCALE = 100.0000' / in.	CHECKED -	REVISED -
PLOT DATE = 3/21/2019	DATE -	REVISED -

**STATE OF ILLINOIS
DEPARTMENT OF TRANSPORTATION**

DETAIL SHEET

SCALE: NTS SHEET 1 OF 1 SHEETS STA. TO STA.

F.A.P. RTE.	SECTION	COUNTY	TOTAL SHEETS	SHEET NO.
312	121PP-1	RANDOLPH	8	7
CONTRACT NO. 76M32				
		ILLINOIS	FED. AID PROJECT	



END PROJECT
M.S. 3.27
(0.2 MI S. OF WATER ST.)

BEGIN PROJECT
M.S. 0.00
(HIGH ST.)

MODEL: Default
FILE: Model2_Plan\planroom.dwg
PROJECT: \Projects\DOT\Documents\DOT_Offices\Director\Projects\DOT\76M32\CADD\Drawn\CADDsheets\DOT\76M32-2bc-cover.dgn

USER NAME = millerraj	DESIGNED -	REVISED -
	DRAWN -	REVISED -
PLOT SCALE = 100.0000' / in.	CHECKED -	REVISED -
PLOT DATE = 3/21/2019	DATE -	REVISED -

**STATE OF ILLINOIS
DEPARTMENT OF TRANSPORTATION**

LOCATION MAP			
SCALE: NTS	SHEET 1	OF 1 SHEETS	STA. TO STA.

F.A.P. RTE. 312	SECTION 121PP-1	COUNTY RANDOLPH	TOTAL SHEETS 8	SHEET NO. 8
CONTRACT NO. 76M32			ILLINOIS FED. AID PROJECT	