

INDEX OF SHEETS

Sheet No.	Description
1	COVER SHEET
	TYPICAL CROSS SECTIONS
3 - 4	HMA OVERLAY DETAILS
5 - 6	ADA RAMP IMPROVEMENT DETAILS
7 - 9	THERMOPLASTIC PAVEMENT MARKING LAYOUT & DETAILS
10	TRAFFIC CONTROL PLAN
	STANDARDS

- 424001-11 PERPENDICULAR CURB RAMPS FOR SIDEWALKS
- 424006-04 DIAGONAL CURB RAMPS FOR SIDEWALKS
- 701301-04 LANE CLOSURE 2L+2W, SHORT TERM OPERATIONS
- 701306-04 LANE CLOSURE 2L+2W, SLOW MOVING OP, DAY ONLY 45MPH
- 701801-06 SIDEWALK, CORNER OR CROSSWALK CLOSURE
- 701901-08 TRAFFIC CONTROL DEVICES
- 780001-05 TYPICAL PAVEMENT MARKINGS
- 000001-07 STANDARD SYMBOLS, ABBREVIATIONS AND PATTERNS

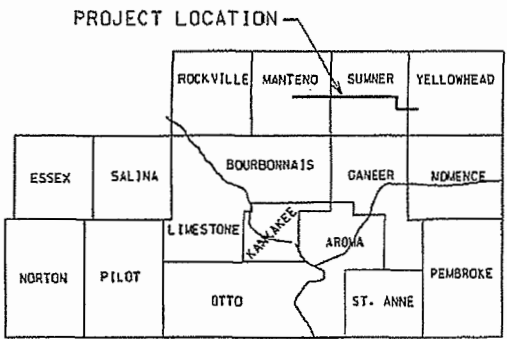
Code #	Item	Quantity/Unit
21101515	TOPSOIL FURNISH AND PLACE, 4"	24 SQ YD
25100630	EROSION CONTROL BLANKET	24 SQ YD
42400200	PORTLAND CEMENT CONCRETE SIDEWALK 5 INCH	405 SQ FT
42400800	DETECTABLE WARNINGS	32 SQ FT
44000500	COMBINATION CURB AND GUTTER REMOVAL	32 FOOT
44000500	SIDEWALK REMOVAL	355 SQ FT
44201313	CLASS C PATCHES, TYPE 1, 7 INCH	7.3 SQ YD
* 40600637	LEVELING BINDER (MACHINE METHOD), 1/2" SFG, N70	7366 TON
* 40600982	HOT-MIX ASPHALT SURFACE REMOVAL - BUTT JOINT	1413 SQ YD
40600990	TEMPORARY RAMP	378 SQ YD
* 40603340	HOT-MIX ASPHALT SURFACE COURSE, MIX "D", N70	11074 TON
* 40800029	BITUMINOUS MATERIALS (TACK COAT)	90596 POUND
40800050	INCIDENTAL HOT-MIX ASPHALT SURFACING	1155 TON
* 44000155	HOT-MIX ASPHALT SURFACE REMOVAL, 1 1/2"	898 SQ YD
* 44000159	HOT-MIX ASPHALT SURFACE REMOVAL, 2 1/2"	5933 SQ YD
48101200	AGGREGATE SHOULDERS, TYPE B	6662 TON
60300305	FRAMES AND BIDS TO BE ADJUSTED	2 EACH
60603800	COMBINATION CONCRETE CURB AND GUTTER, TYPE B-6.12	32 FOOT
67100100	MOBILIZATION	1 L SUM
70100460	TRAFFIC CONTROL AND PROTECTION, STANDARD 701306	1 L SUM
* 70300100	SHORT TERM PAVEMENT MARKING	20556 FOOT
78000100	THERMOPLASTIC PAVEMENT MARKING - LETTERS AND SYMBOLS	210 SQ FT
78000200	THERMOPLASTIC PAVEMENT MARKING - LINE 4"	14780 FOOT
78000400	THERMOPLASTIC PAVEMENT MARKING - LINE 6"	165 FOOT
78000500	THERMOPLASTIC PAVEMENT MARKING - LINE 12"	835 FOOT
78000650	THERMOPLASTIC PAVEMENT MARKING - LINE 24"	96 FOOT
X4401136	HOT-MIX ASPHALT SURFACE REMOVAL, VARIABLE DEPTH	458 SQ YD
△ X7830060	GROOVING FOR RECESSED PAVEMENT MARKING, LETTERS AND SYMBOLS	210 SQ FT
△ X7830070	GROOVING FOR RECESSED PAVEMENT MARKING 5"	14780 FOOT
△ X7830074	GROOVING FOR RECESSED PAVEMENT MARKING 7"	165 FOOT
△ X7830076	GROOVING FOR RECESSED PAVEMENT MARKING 13"	835 FOOT
△ X7830080	GROOVING FOR RECESSED PAVEMENT MARKING 25"	96 FOOT
20021700	EXPANSION JOINT REHABILITATION	24 FOOT
△ X2063700	LONGITUDINAL JOINT SEALANT	52855 FOOT
Z0034105	MATERIAL TRANSFER DEVICE	18440 TON
* X0006343	SEEDING (COMPLETE)	24 SQ YD
Z0076600	TRAINES	1,000 TON
Z0076604	TRAINES TPG	1,000 TON

* Special Provisions △ Specialty Item

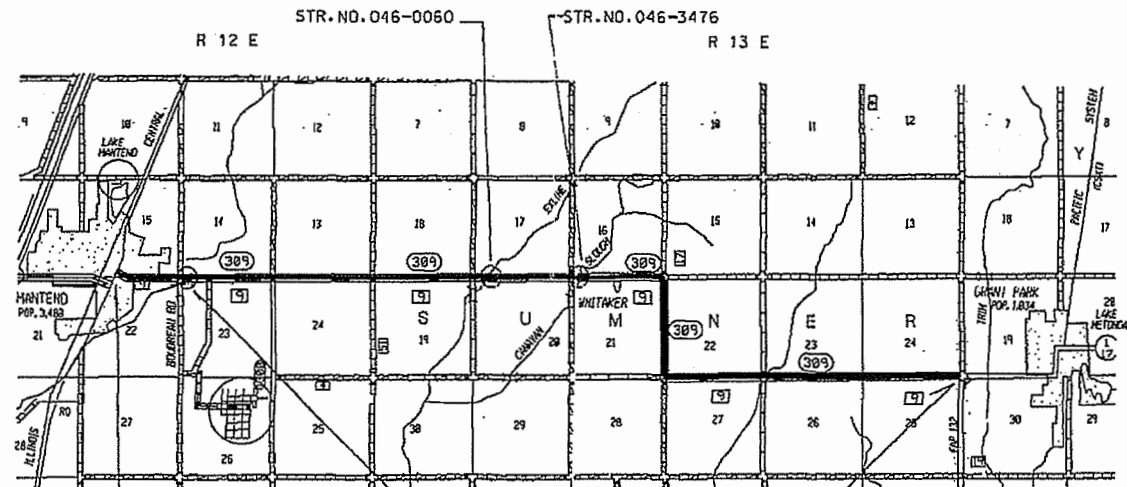
STATE OF ILLINOIS
DEPARTMENT OF TRANSPORTATION
COUNTY OF KANKAKEE
DEPARTMENT OF HIGHWAYS
PLANS FOR PROPOSED
FEDERAL AID SECONDARY PROJECT
F.A.S. 309 (C.H.9) PROJECT 2W4R(936)
SECTION 16-00243-02-RS
JOB NO. C-93-006-20

F.A.S. ROUTE NO.	SECTION	COUNTY	NO. SHEETS	SHEET NO.
311	#	Kankakee	10	1

* 16-00243-02-RS
CONTRACT NO. 87715



KANKAKEE COUNTY



BRIDGE OMISSION
STA. 38+08 - 39+00
STR. NO. 046-0059

CONSTRUCTION STARTS
STA. 1+00
(EAST E.O.P. IL RT50 = STA. 0+02)

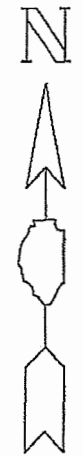
CONSTRUCTION ENDS
STA. 514+65
(WEST EDGE OF PAVEMENT
IL RT. 1 & 17 = STA. 515+00)

Construction Code 0005
J.U.L.I.E. 1-800-892-0123
CONTRACT NO. 87715 JOB NO. C-93-006-20

NET LENGTH = 51,327 LIN FT = 9.721 MILES

THE ACCEPTANCE OF THIS PROJECT IS BASED ON THE MINIMUM DESIGN CRITERIA FOR LOCAL AGENCY PAVEMENT PRESERVATION POLICY (LAPP) PROJECTS

CURRENT A.D.T. = 5200
DESIGN A.D.T. = 5720
DESIGN SPEED = 55 M.P.H.



STATE OF ILLINOIS
DEPARTMENT OF TRANSPORTATION
DIVISION OF HIGHWAYS

Submitted 03/28 2019

Mark Rogers
Mark Rogers, P.E.
County Engineer

Passed 4-5 2019

Dan Ernat
Dan Ernat, P.E.
Bureau Chief, Local Roads & Streets

Approved 4-5 2019

Kevin Marchek
Kevin Marchek, P.E.
Regional Engineer

TYPICAL CROSS SECTIONS

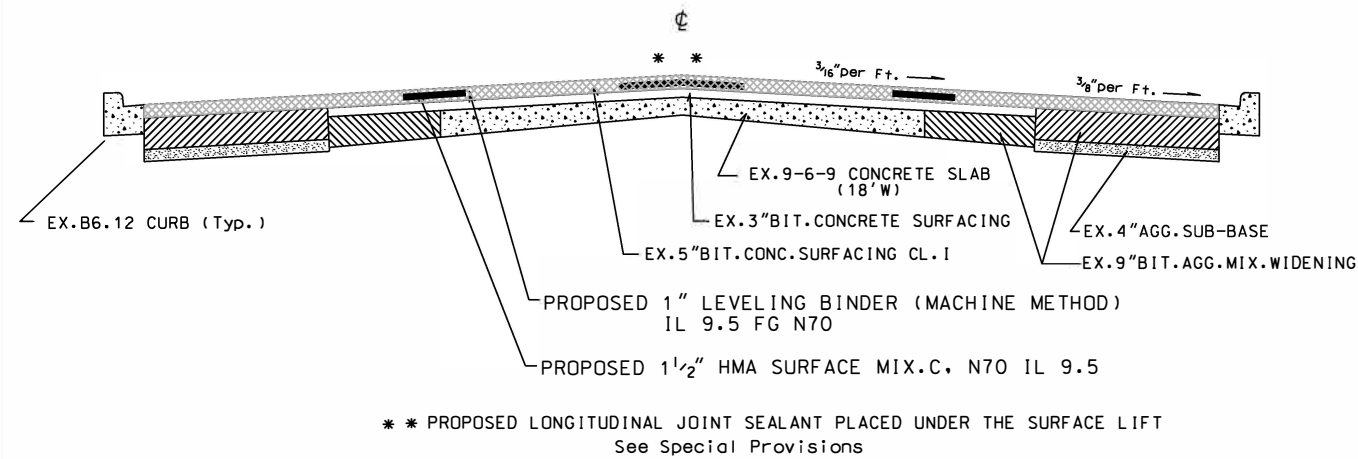
JOB NO. C-93-006-20
CONTRACT NO. 87715

SECTION	COUNTY	TOTAL SHEETS	SHEET NO.
16-00243-02-RS	KANKAKEE	10	2

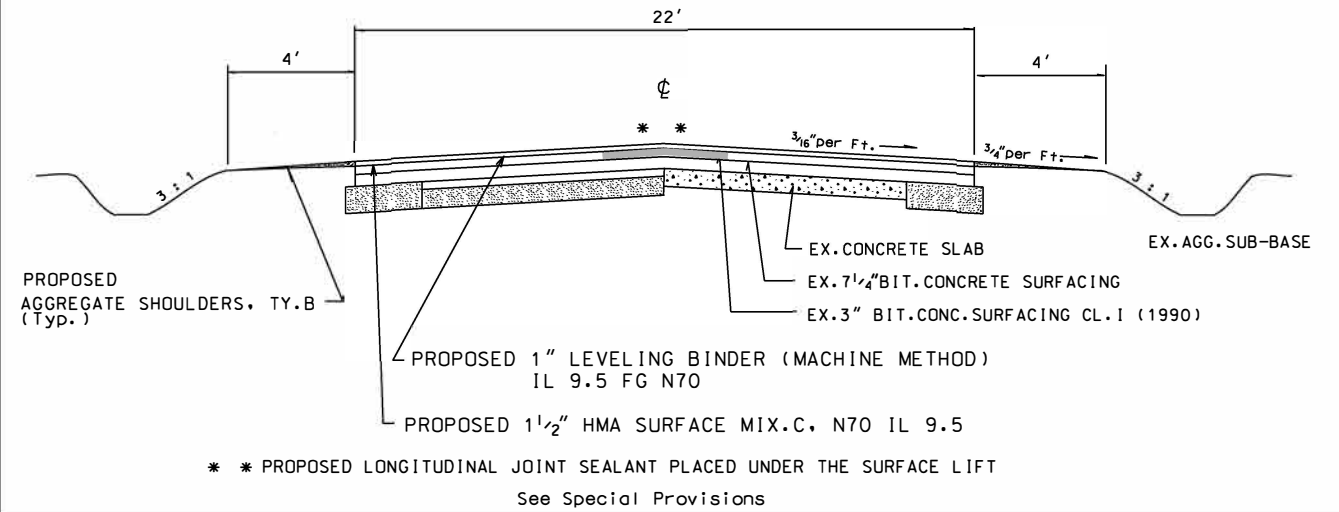
STA.1+00 to STA.13+55

STA.1+00 to STA.4+00 - 39'-36" E-E TAPER
STA.4+00 to STA.13+55 - 36" E-E

Full Width HMA Surface Removal 2 1/2"

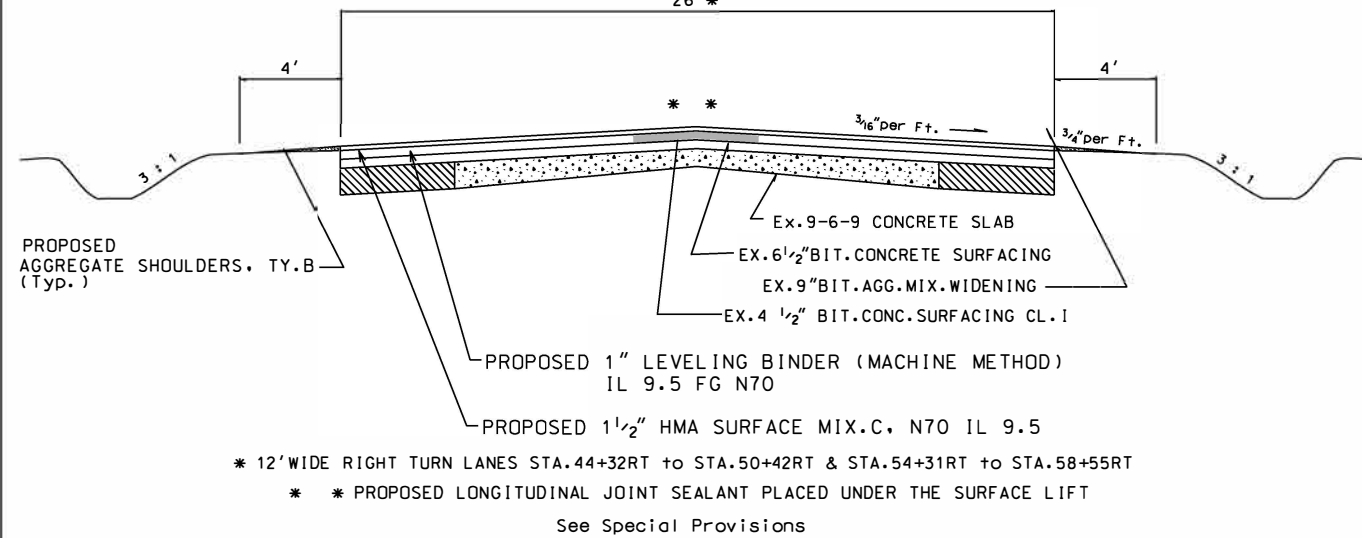


STA.86+04 to STA.288+37



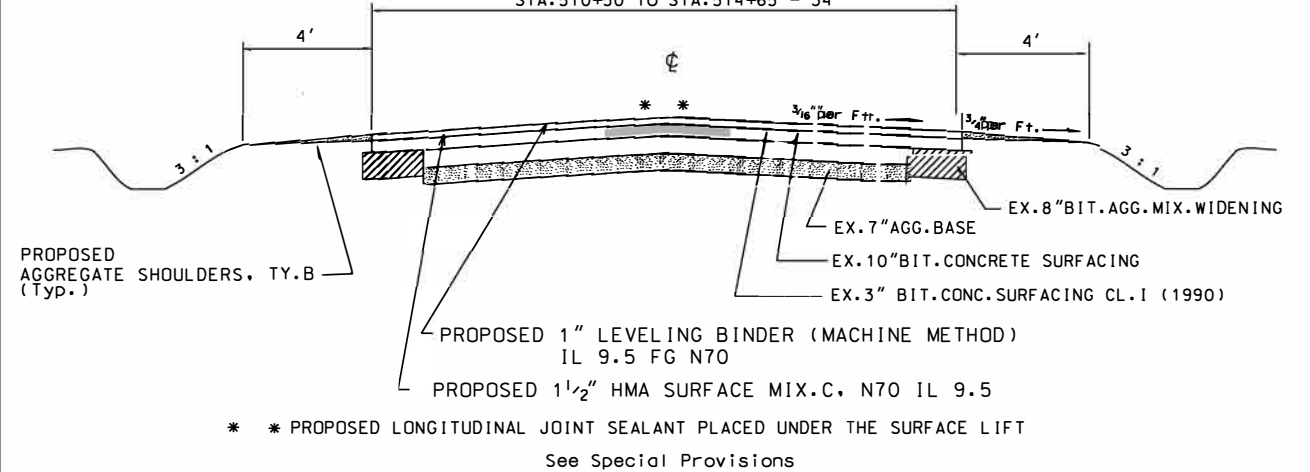
STA.13+55 to STA.86+04

26'*



STA.288+37 to STA.514+65

STA.288+37 to STA.510+50 - 22'
STA.510+50 to STA.514+65 - 34'



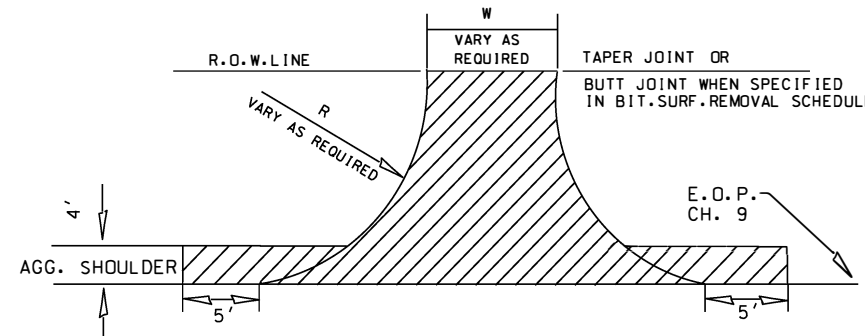
ESTIMATED QUANTITIES ON TANGENTS

ITEM	STA.1+00 to STA.13+55	STA.13+55 to STA.86+04	STA.86+04 to STA.288+37	STA.288+37 to STA.515+00	TOTALS	UNIT
AGGREGATE SHOULDERS TY.B	-	963	2688	3011	6662	TON
BITUMINOUS MATERIALS (TACK COAT)	Tack 2304 / Fog 1153	Tack 9424 / Fog 4712	Tack 22256 / Fog 11128	Tack 25199 / 12600 Fog	88776	POUND
LEVELING BINDER (MM) IL 9.5 FG N70	287	1173	2770	3136	7366	TON
LONGITUDINAL JOINT SEALANT	2510	7249	20233	22663	52655	FOOT
HOT MIX ASPHALT SURFACE COURSE MIX D N70	430	1759	4155	4704	11074	TON
SHORT-TERM PAVEMENT MARKING	125'Prime/125'LB/125'LJS/125'Surf	725'Prime/725'LB/725'LJS/725'Surf	2023'Prime/2023'LB/2023'LJS/2023'Surf	2266'Prime/2266'LB/2266'LJS/2266'Surf	20556	FOOT

INTERSECTION DETAIL

INTERSECTION QUANTITY SCHEDULE						
STATION	SIDE	WIDTH	RADIUS	INCIDENTAL BIT. SURFACING (TON)	BIT. MATRLS. (PRIME COAT) (LB)	LOCATION
4+50	LT	32	30	26	45	Birch St.
6+85	RT	34	15W 50E	62	55	2nd St.
12+36	RT	32	30	26	45	McGuire Dr.
20+34	LT	50	25	20	45	Maple Ridge St.
32+68	LT	24	50W 100E	104	55	3000E
32+68	RT	24	100W 50E	104	55	3000E
57+85	RT	34	50	56	55	Sears Ent.
86+04	LT	18	30	22	45	4000E
86+04	RT	26	100W 50E	104	55	4000E
139+37	LT	18	30	22	45	5000E
139+37	RT	18	30	22	45	5000E
193+75	LT	18	30	22	45	6000E
193+75	RT	18	30	22	45	6000E
247+08	LT	18	30	22	45	7000E
247+08	RT	18	30	22	45	7000E
300+41	LT	20	30	24	45	8000E
300+41	LT	20	30	24	45	9000N
350+96	RT	20	30	24	45	8000N
407+07	LT	18	30	18	45	9000E
407+07	RT	18	30	18	45	9000E
510+50	LT	20	30	24	45	11000E
515+00	*	34	70LT 105RT	68	55	IL RT 1&17
TOTALS				856	1050	

* INCLUDES RADIUS ONLY . TANGENT INCLUDED IN MAINLINE QUANTITIES .

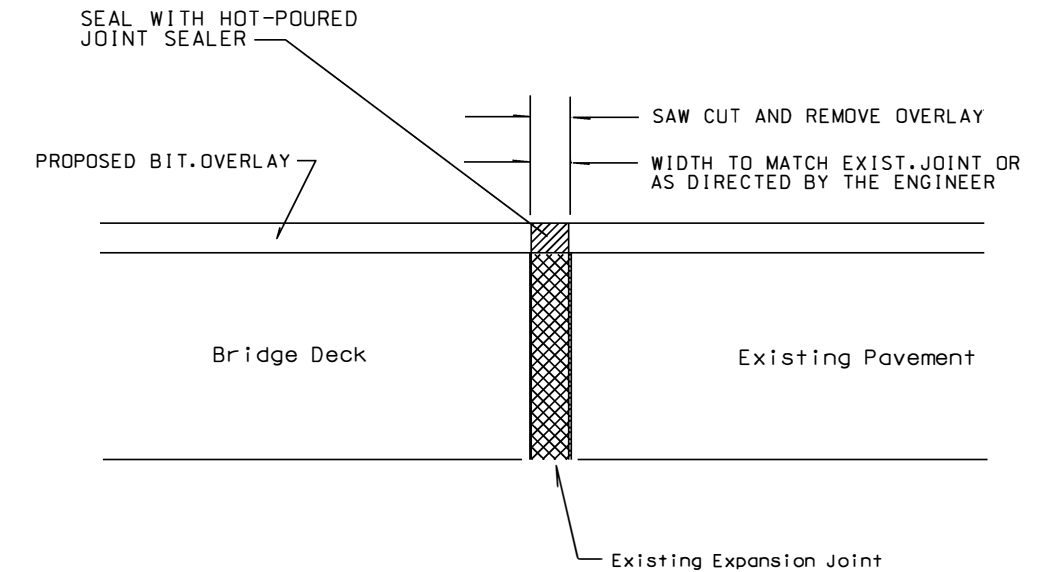


CONSTRUCT 2 1/2" INCIDENTAL Hot Mix Asphalt

INCIDENTAL HMA SCHEDULE		
DESCRIPTION	INCIDENTAL BIT. SURFACING (TON)	BIT. MATRLS. (PRIME COAT) (LB)
Intersections	865	1050
Driveways	150	450
Mailbox turnouts	140	320
TOTAL	1155	1820

EXPANSION JOINT REHABILITATION DETAIL

STA. 254+68 (WEST END OF BRIDGE DECK)



NOTES:

1. THE NEW BITUMINOUS OVERLAY SHALL BE SAWED, REMOVED, AND THE JOINT AREA CLEANED. PRIOR TO PLACING THE HOT-POURED JOINT SEALER THE JOINT SHALL BE BLOWN OUT WITH COMPRESSED AIR.
2. THIS WORK SHALL BE PAID FOR AT THE CONTRACT UNIT PRICE PER FOOT FOR EXPANSION JOINT REHABILITATION.

Pavement Design Data SEGMENT#1 STA. 1+00 to STA. 288+37

Design Period = 15 Years
 ADT = 5200(2018) 5720(2033)
 P.V. = 88% = 4576 S.U. = 7% = 364 M.U. = 5% = 260
 T.F. = 1.063
 SN = 3.90

Pavement Structure Number	
Ex. 7 1/2" Agg. Base	7.50 x 0.07 = 0.53
Ex. 2 1/2" Bit. CL. B Surfacing	2.50 x 0.15 = 0.37
Ex. 4" Bit. CL. I Surfacing	4 x 0.23 = 0.92
Ex. 3 1/2" Bit. CL. I Surfacing	3.25 x 0.23 = 0.75
Ex 1 1/2" Bit. Conc. Surface CL. I	1.50 x 0.30 = 0.45
Proposed 2 1/2" HMA Surfacing	2.50 x 0.36 = 0.90
3.92	

Marshall Stability ≥ 1700

Pavement Design Data SEGMENT#2 STA. 288+37 to STA. 515+00

Design Period = 15 Years
 ADT = 5200(2018) 5720(2033)
 P.V. = 88% = 4576 S.U. = 7% = 364 M.U. = 5% = 260
 T.F. = 1.063
 SN = 3.90

Pavement Structure Number	
Ex. 7" Agg. Base	7 x 0.07 = 0.49
Ex. 2" Bit. CL. B Surfacing	2 x 0.15 = 0.30
Ex. 5" Bit. CL. I Surfacing	5 x 0.23 = 1.15
Ex. 3" Bit. CL. I Surfacing	3 x 0.23 = 0.69
Ex. 1 1/2" Bit. Conc. Surface CL. I	1.50 x 0.30 = 0.45
Proposed 2 1/2" HMA Surfacing	2.50 x 0.36 = 0.90
3.98	

Marshall Stability ≥ 1700

Bituminous Mix - AC Grade - Maximum % Rap

	PG 64-22	Per Special Provision for
Surface Course	PG 64-22	
Incidental Surfacing	PG 64-22	RAP & RAS
Leveling Binder	PG 64-22	All Pay Items

FRAME & LIDS TO BE ADJUSTED

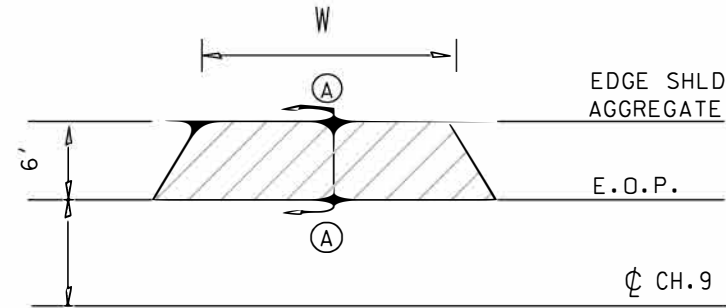
LOCATION	QUANTITIES
STA. 4+43RT	1
STA. 6+45RT	1
TOTAL	2

GENERAL NOTES

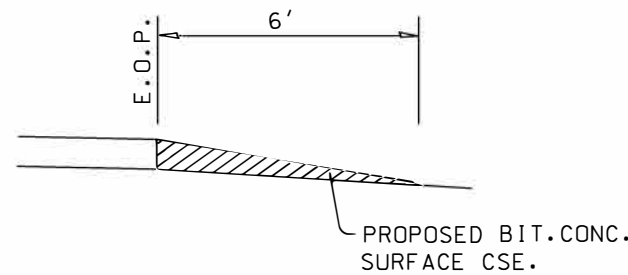
1. IT SHALL BE THE CONTRACTOR'S RESPONSIBILITY TO DETERMINE THE ACTUAL LOCATION OF ALL UTILITY LOCATIONS .
2. BRIDGE DECK(S) STA. 204+02 TO STA. 204+60 & STA. 254+26 TO STA. 254+68 SHALL BE RESURFACED WITH 1 1/2" BIT. CONCRETE SURFACE CSE. TO THEIR FULL 36' DECK WIDTH(S).

TYPICAL ENTRANCE DETAIL

W :WIDTH OF APPROACH PADS ARE ESTIMATED AT 20' PER ENTRANCE . THE ACTUAL CONSTRUCTED WIDTH MAY VARY AS DIRECTED BY THE ENGINEER TO FIT THE EXISTING ENTRANCES .



SECTION A-A



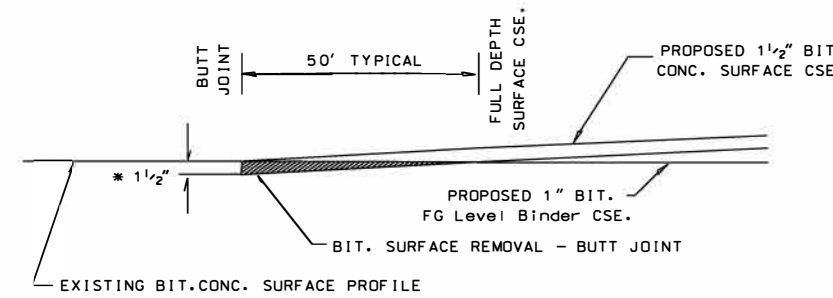
ESTIMATED QUANTITIES-70 ENTRANCES		
ITEM	UNIT	QUANTITY
BITUMINOUS MATERIALS (PRIME COAT)	LB	450
HMA SURFACE CRSE N70.MIX C	TON	150

Quantities are included in Incidental HMA total
Screed extender will not be used for incidental HMA pay items.
Paving will be Machine Method approved by the Engineer.

JOB NO. C-93-006-20
CONTRACT NO. 87715

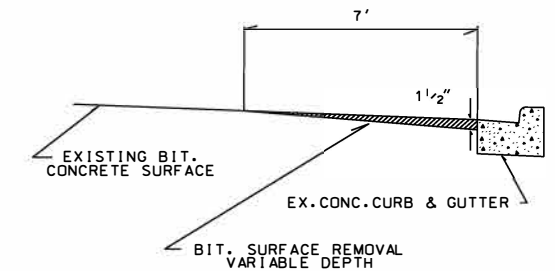
SECTION	COUNTY	TOTAL SHEETS	SHEET NO.
16-00243-02-RS	KANKAKEE	10	4

TYPICAL BUTT JOINT DETAIL



* Depth will be 2 1/2" in full with area limits 1+00-13+55

HOT MIX ASPHALT REMOVAL VARIABLE DEPTH DETAIL

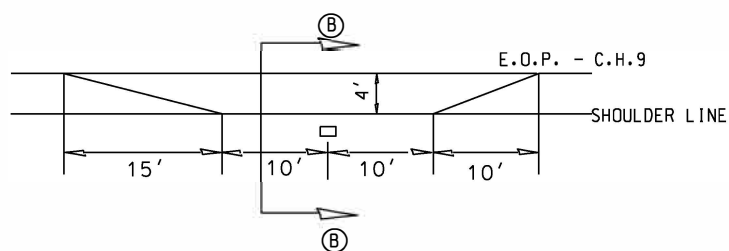


BITUMINOUS SURFACE REMOVAL AND TEMPORARY RAMP SCHEDULE

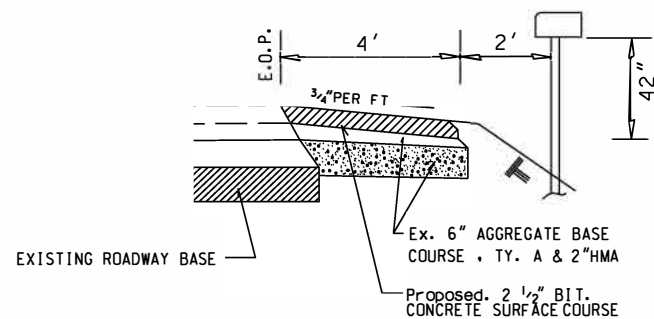
LOCATION	STA TO STA	BIT.SURFACE REMOVAL - BUTT JOINT	BIT.SURFACE REMOVAL 1 1/2"	BIT.SURFACE REMOVAL 2 1/2"	BIT.SURFACE REMOVAL Variable Depth	TEMPORARY RAMP (8' Long, Full Width)
Mainline	1+00 to 13+55			5120		35
Mainline	13+55-14+55 (Taper to 0")			322		
Birch St.	LT18' to LT50'			156		28
2nd St.	RT18' to RT50'			186		30
McGuire Dr.	12+36RT13' to RT43'			149		28
Maple Ridge St.	20+34LT13' to LT23'	94				44
3000E	32+68LT65' to LT95'	80				23
3000E	32+68RT65' to RT95'	80				23
Bridge App.	37+53 to 38+08	145				23
Bridge App.	39+00 to 39+50	145				23
Boudreau Rd	46+92 West Radius(curb)				222	
Boudreau Rd	49+12R+125' to R+155'	120				
Boudreau Rd	50+73 East Radius(curb)				128	
Sears Ent.	57+85RT45' to RT75'	120				
4000E	RT113' to RT143'	87				*13
4000E	L+18-L+30'	24				*8
5000E	R+18-R+30'	24				*8
5000E	L+18-L+30'	24				*8
6000E	L+18-L+30'	24				*8
6000E	L+18-L+30'	24				*8
Bridge App.	203+52-204+02		122			
Deck	204+02-204+60(36'W)		232			
Bridge App.	204+60-205+10		122			
7000E	R+18-R+30'	24				*8
7000E	L+18-L+30'	24				*8
Bridge App.	253+76-254+26		122			
Deck	254+26-254+68(36'W)		168			
Bridge App.	254+68-255+18		122			
Radius Curb	299+83 to 301+22RT				108	
8000E	LT41' to LT71'	67				*9
9000N	LT41' to LT71'	27				*9
8000E	350+96RT11' to RT41'	67				*9
9000E	407+07					
9000E	407+07					
11000E	L+18-L+30'	24				*9
IL RT 1&17	514+35 to 514+65	189				*16
TOTALS		1413 Sq.Yd.	888 Sq.Yd.	5933 Sq.Yd.	458 Sq.Yd.	378 Sq.Yd.

* 4' at low ADT roads

TYPICAL MAILBOX TURNOUT DETAIL



SECTION B-B



Quantities are included in Incidental HMA total
Screed extender will not be used for incidental HMA pay items.
Paving will be Machine Method approved by the Engineer.

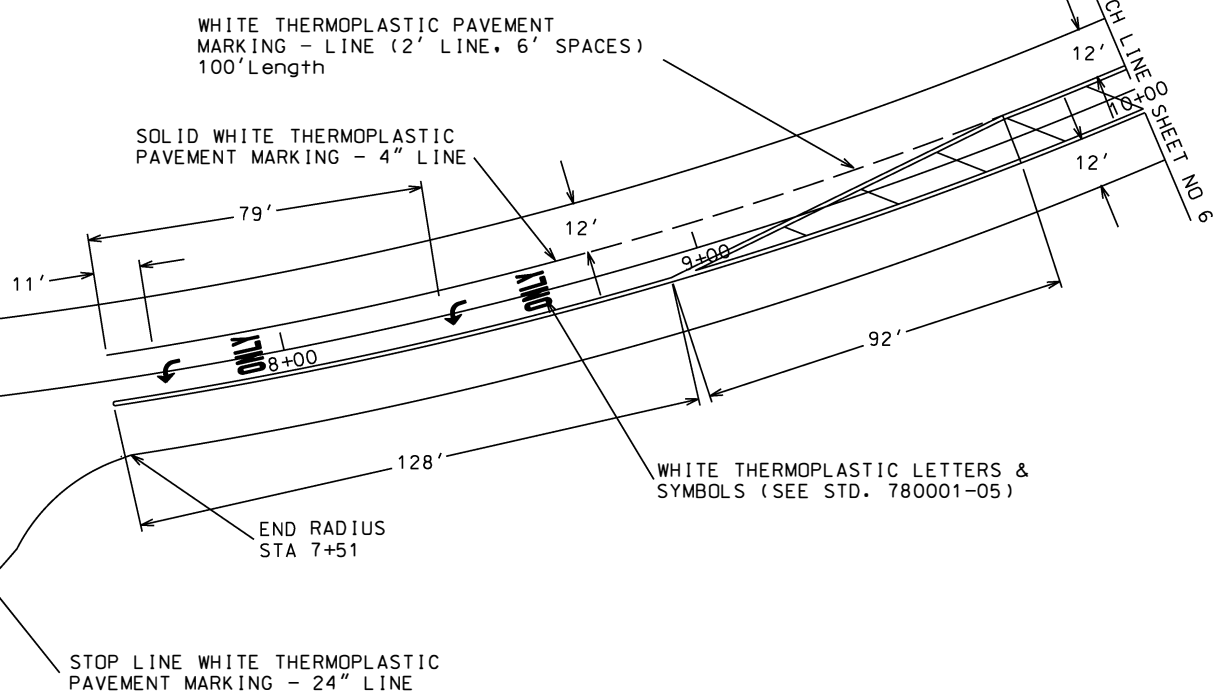
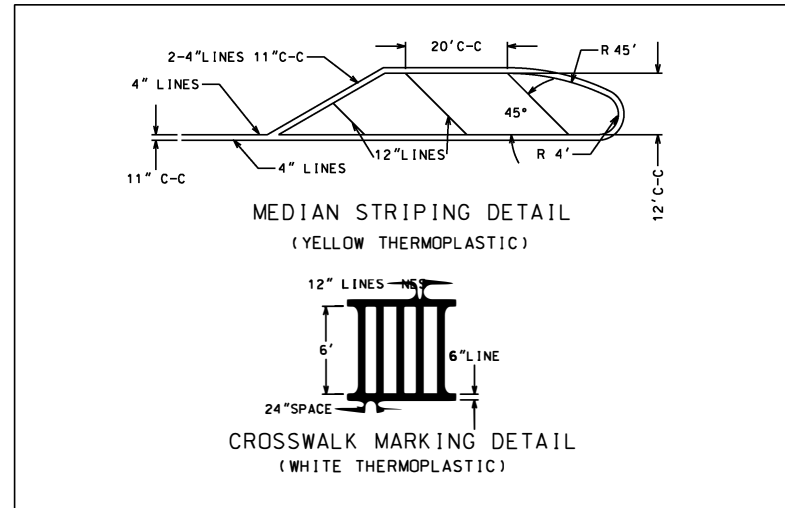
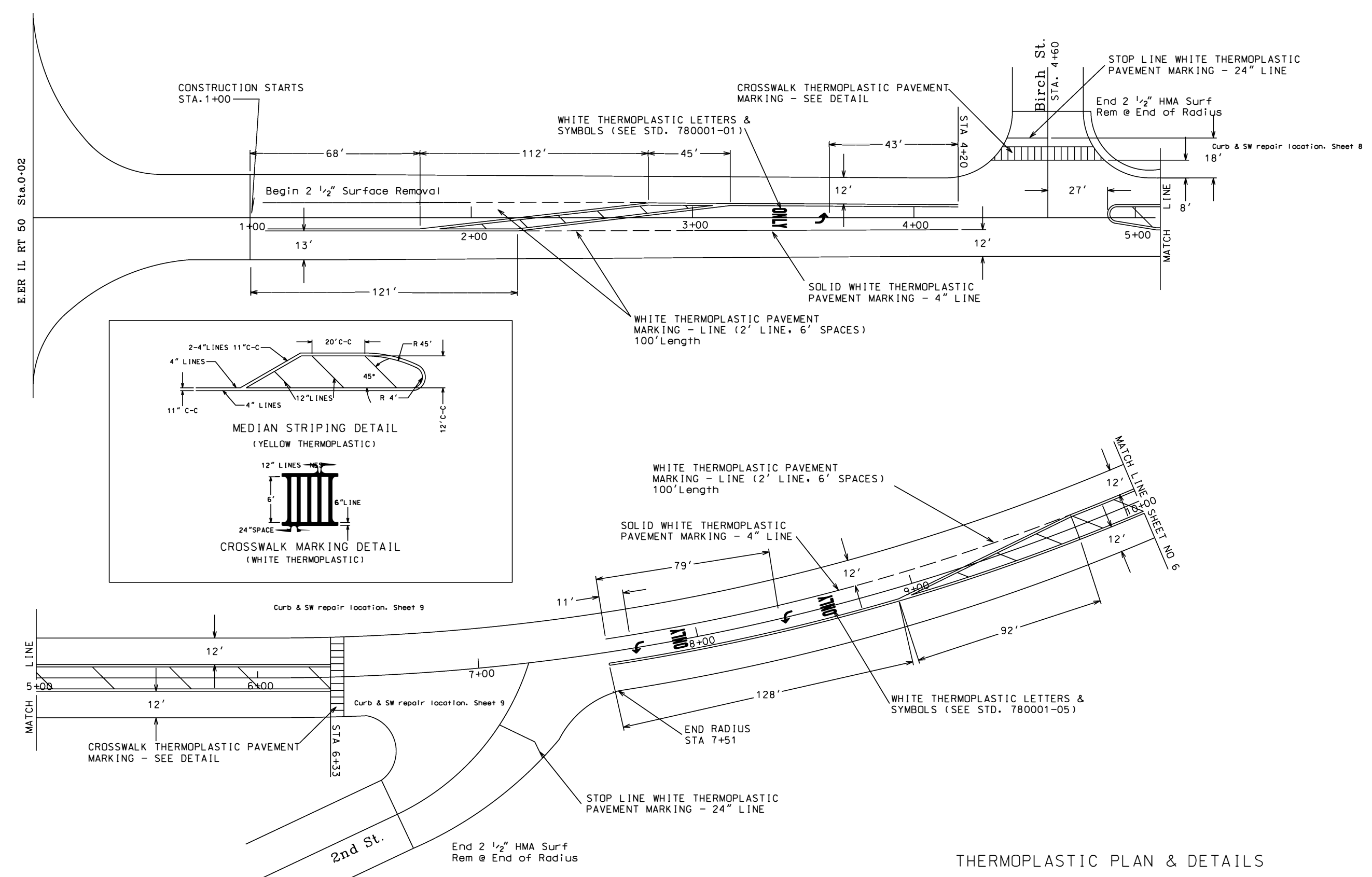
MAILBOX TURNOUT SCHEDULE

STATION	SIDE	STATION	SIDE
16+54	LT	281+15	RT
76+65	LT	284+72	RT
79+67	RT	287+22	RT
79+78	LT	288+44	RT
89+05	RT	293+37	RT
99+01	RT	297+55	RT
120+80	RT	298+31	RT
151+53	RT	305+35	LT
160+42	RT	308+73	LT
163+29	RT	333+56	LT
192+45	RT	355+66	RT
210+74	RT	366+20	RT
249+78	RT	412+10	RT
252+08	RT	413+93	RT
256+66	RT	436+50	RT
261+15	RT	440+31	RT
267+70	RT	442+68	RT
275+37	RT	453+65	RT
278+76	RT	461+48	RT
280+18	RT	469+02	RT

ESTIMATED QUANTITIES - 40 MAILBOX TURNOUTS

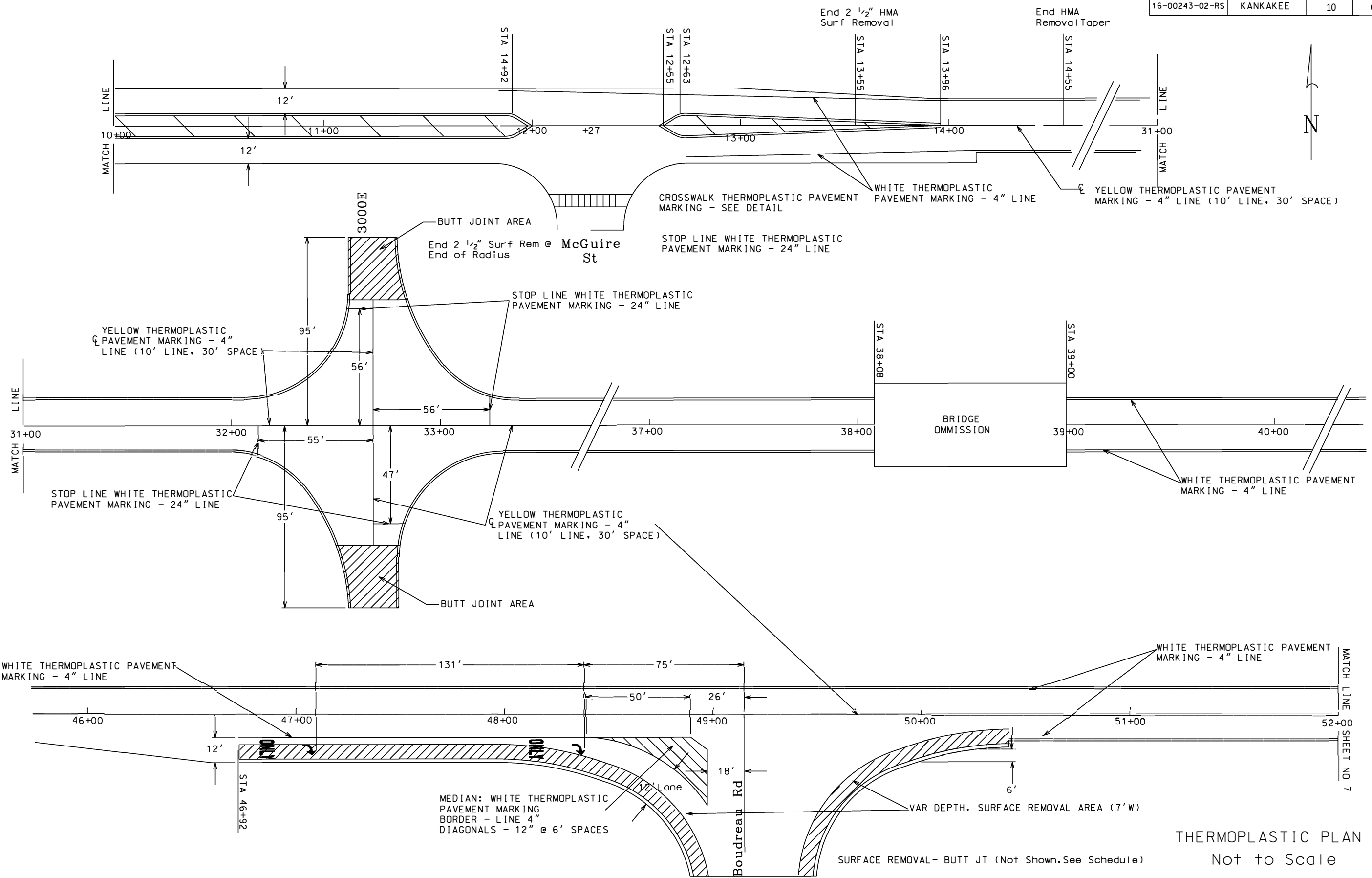
ITEM	UNIT	QUANTITY
BIT.MATERIALS (PRIME COAT)	LB	320
HMA SURFACE CRSE N70.MIX C	TON	140

SECTION	COUNTY	TOTAL SHEETS	SHEET NO.
16-00243-02-RS	KANKAKEE	10	5



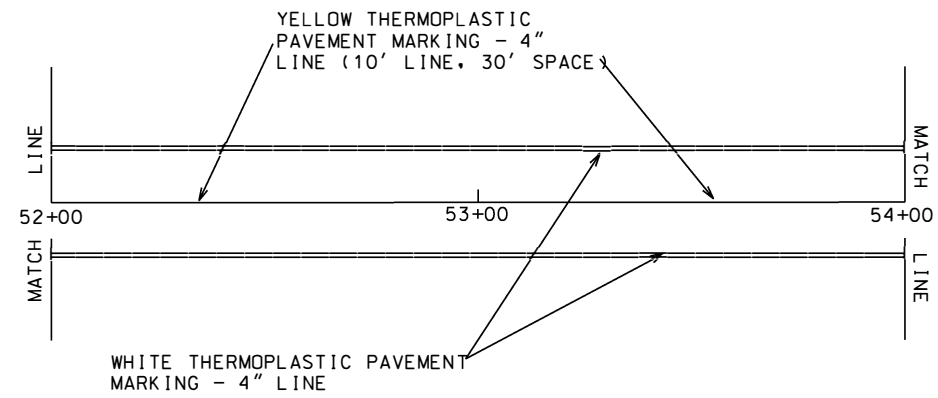
THERMOPLASTIC PLAN & DETAILS
 Not to Scale
 *All Thermoplastic markings to be Grooved & Recessed

SECTION	COUNTY	TOTAL SHEETS	SHEET NO.
16-00243-02-RS	KANKAKEE	10	6



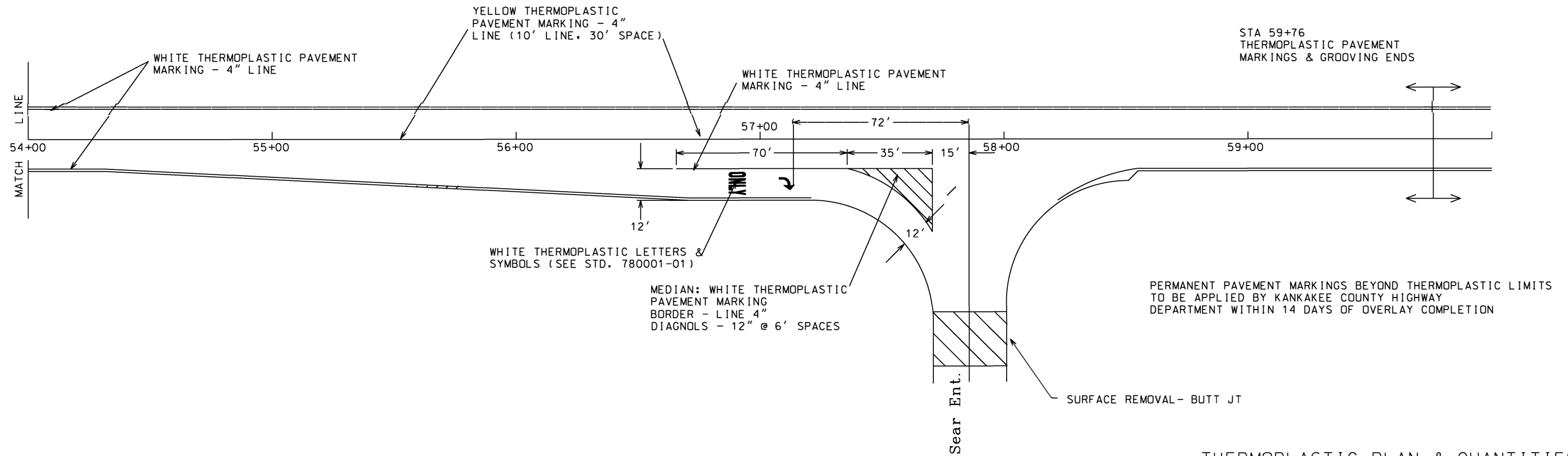
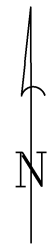
THERMOPLASTIC PLAN
Not to Scale

SECTION	COUNTY	TOTAL SHEETS	SHEET NO.
16-00243-02-RS	KANKAKEE	10	7



THERMOPLASTIC PAVEMENT MARKING*							
LOCATION	LINE 4"(FOOT)		LINE 6"(FOOT)	LINE 12"(FOOT)		LINE 24"(FOOT)	LETTERS (SQ.FT.)
	YELLOW	WHITE	WHITE	YELLOW	WHITE	WHITE	SYMBOLS WHITE
1+38 to 13+96	3740	680	165	300	440	40	105
13+96 to 38+08	603	5002				56	
39+00 to 59+76	519	4230			95		105
TOTALS	4862	9912	165	300	535	96	210

*All Thermoplastic markings to be Grooved & Recessed



THERMOPLASTIC PLAN & QUANTITIES

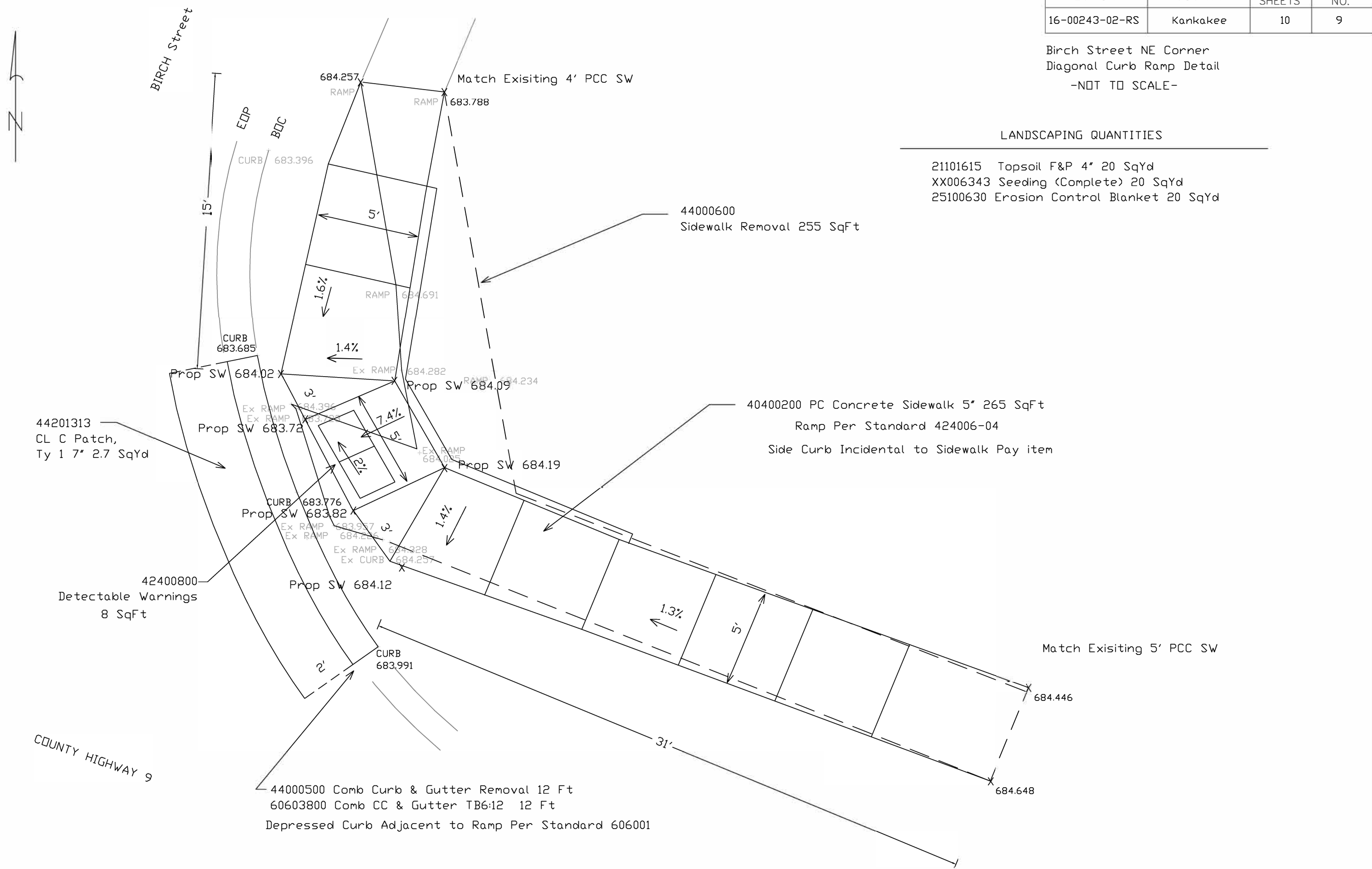
Not to Scale

SECTION	COUNTY	TOTAL SHEETS	SHEET NO.
16-00243-02-RS	Kankakee	10	9

Birch Street NE Corner
 Diagonal Curb Ramp Detail
 -NOT TO SCALE-

LANDSCAPING QUANTITIES

- 21101615 Topsoil F&P 4" 20 SqYd
- XX006343 Seeding (Complete) 20 SqYd
- 25100630 Erosion Control Blanket 20 SqYd



44000600
 Sidewalk Removal 255 SqFt

40400200 PC Concrete Sidewalk 5" 265 SqFt
 Ramp Per Standard 424006-04
 Side Curb Incidental to Sidewalk Pay item

44201313
 CL C Patch,
 Ty 1 7" 2.7 SqYd

42400800
 Detectable Warnings
 8 SqFt

44000500 Comb Curb & Gutter Removal 12 Ft
 60603800 Comb CC & Gutter TB6:12 12 Ft
 Depressed Curb Adjacent to Ramp Per Standard 606001

COUNTY HIGHWAY 9

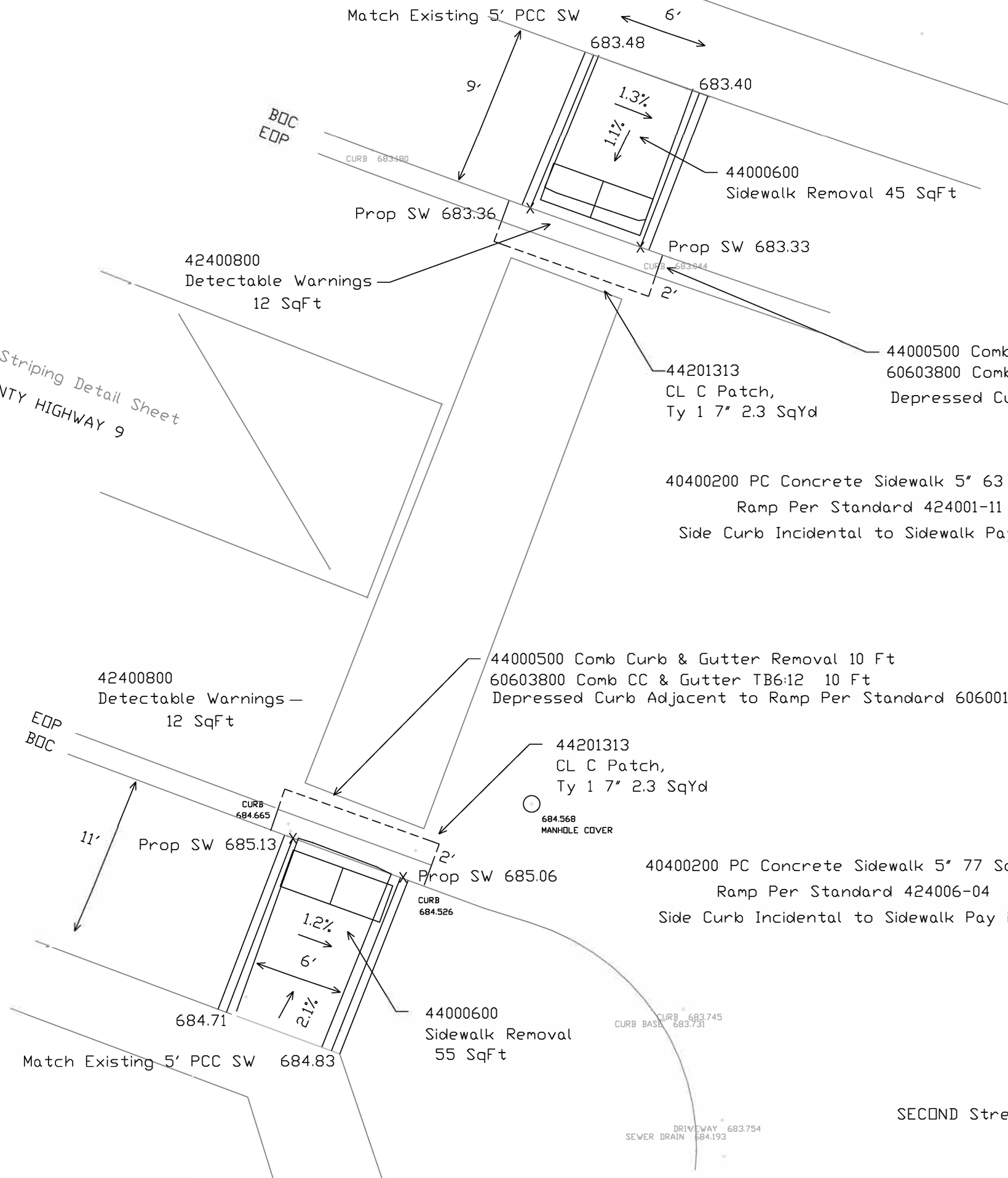
BIRCH Street



34.264

SECTION	COUNTY	TOTAL SHEETS	SHEET NO.
16-00243-02-RS	Kankakee	10	9

SECOND Street North Side CH 9 & SW Corner
 Mid-Block Curb Ramp Detail
 -NOT TO SCALE-



21101615 Topsoil F&P 4" 2 SqYd
 XX006343 Seeding (Complete) 2 SqYd
 25100630 Erosion Control Blanket 2 SqYd

44000600 Sidewalk Removal 45 SqFt
 44201313 CL C Patch, Ty 1 7" 2.3 SqYd
 44000500 Comb Curb & Gutter Removal 10 Ft
 60603800 Comb CC & Gutter TB6:12 10 Ft
 Depressed Curb Adjacent to Ramp Per Standard 606001

40400200 PC Concrete Sidewalk 5" 63 SqFt
 Ramp Per Standard 424001-11
 Side Curb Incidental to Sidewalk Pay item

44000500 Comb Curb & Gutter Removal 10 Ft
 60603800 Comb CC & Gutter TB6:12 10 Ft
 Depressed Curb Adjacent to Ramp Per Standard 606001

44201313 CL C Patch, Ty 1 7" 2.3 SqYd

40400200 PC Concrete Sidewalk 5" 77 SqFt
 Ramp Per Standard 424006-04
 Side Curb Incidental to Sidewalk Pay item

44000600 Sidewalk Removal 55 SqFt

21101615 Topsoil F&P 4" 2 SqYd
 XX006343 Seeding (Complete) 2 SqYd
 25100630 Erosion Control Blanket 2 SqYd

SECOND Street

See Striping Detail Sheet
 COUNTY HIGHWAY 9

42400800 Detectable Warnings - 12 SqFt

42400800 Detectable Warnings 12 SqFt

Match Existing 5' PCC SW

Match Existing 5' PCC SW

Match Existing 5' PCC SW

Prop SW 683.36

Prop SW 685.13

Prop SW 684.83

Prop SW 683.33

Prop SW 685.06

683.48

683.40

683.40

684.71

684.83

CURB 683.745
 CURB BASE 683.731

CURB 684.665

CURB 684.526

BQC
 EOP

EOP
 BQC

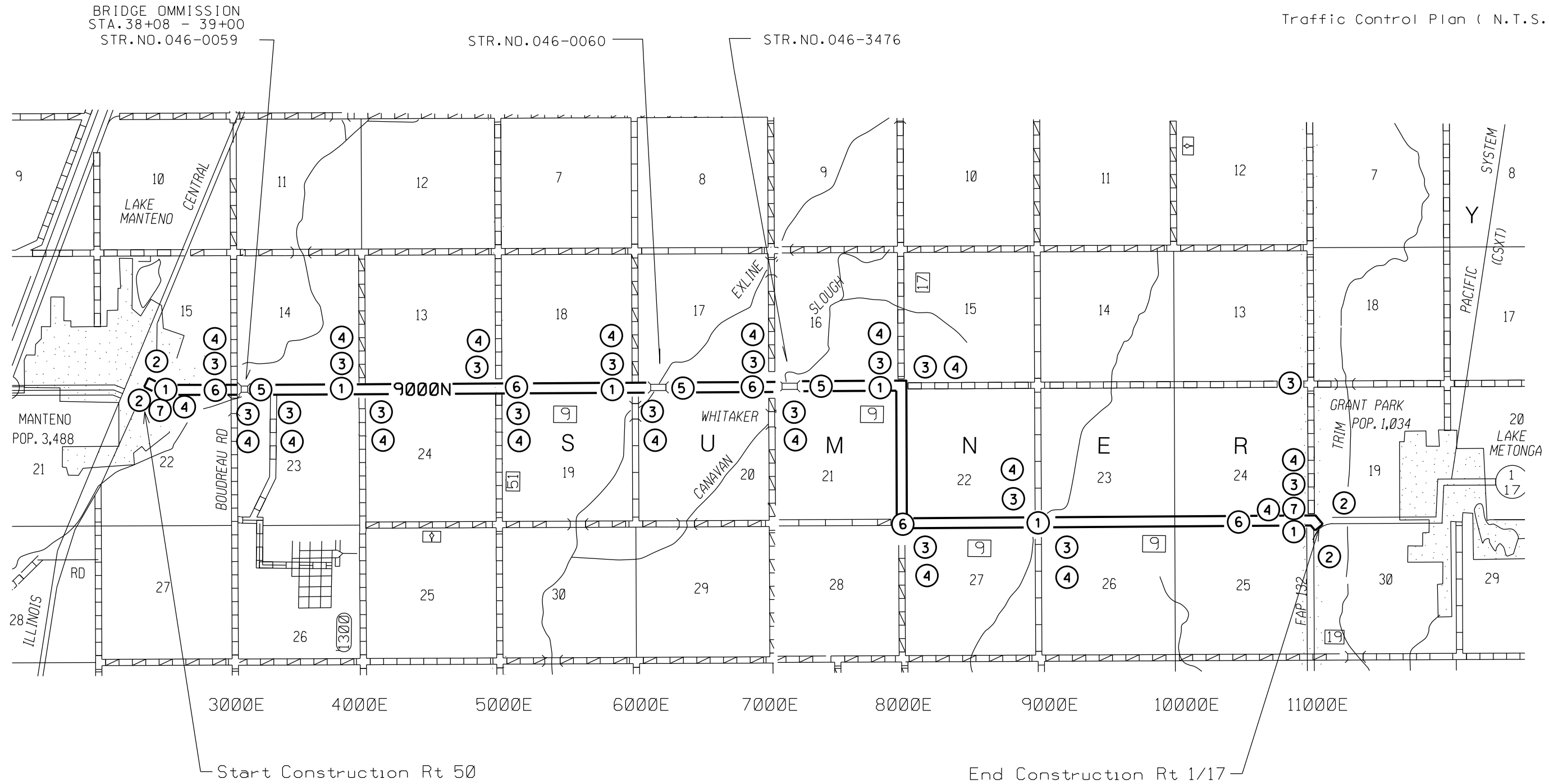
DRIVEWAY 683.754
 SEWER DRAIN 684.193

682.851

684.568
 MANHOLE COVER

SECTION	COUNTY	TOTAL SHEETS	SHEET NO.
16-00243-02-RS	KANKAKEE	10	10

Traffic Control Plan (N.T.S.)



T 32 N